

# BEVERLEY BLARNEY



NATIONAL TRUST

## AVONDALE DISCOVERY FARM

A historic working farm in the Avon Valley

### BEVERLEY CLYDESDALE & VINTAGE DAY

Avondale Discovery Farm is a unique living agricultural museum and a modern working farm. Picnic under the beautiful York gums, take the self-drive tour of Avondale, explore modern farming and landcare activities. Visit the historic Settler's Homestead, Machinery Museum, Animal Nursery and Clydesdale Horses.

**Sunday 19<sup>th</sup> June 11am – 3pm**



This is a day of nostalgia. Clydesdale horses and vintage tractors are in the field with tillage implements of the past. See the earth being turned by a mouldboard or disc plough being pulled by Clydesdales, or a vintage tractor. Interact with the Clydesdales and their handlers. Talk with the 'old-timers' about farming in times gone by.

You will also have the chance to see the Great Southern Working Sheepdog finalists in action.

#### **FOR MORE INFORMATION PLEASE CONTACT**

550 Waterhatch Road, Beverley Tel: (08) 9646 1004  
[www.beverleywa.com/avondale](http://www.beverleywa.com/avondale)

Avondale Discovery Farm, is located 6km west of Beverley on Waterhatch Road.

## Motocross

The Beverley Motocross Club is hosting a Junior State Round on the 19<sup>th</sup> June 2011.

There are only six state rounds per year and the event is only hosted by clubs which are capable of handling the event.

The Club committee and members have been very busy improving the track and facilities to meet the requirements of this prestigious state event.

The track has undergone numerous changes which include new track design, improved safety barriers, widening of the track, etc.

The club has had overwhelming support by some of the local Beverley businesses and residents to help bring this event to the local community.

It is expected that the state round will bring in excess of 300 visitors to the area, many of which will enjoy the accommodation, hospitality and other services provided in the area.

Beverley Motocross Club would like to extend an invitation to all local residents to attend the State Round held on the 19<sup>th</sup> June 2011.

The club has canteen facilities and parking available.

The event starts at approximately 9.00 am for spectators. (Earlier for riders).



## Tax Time is looming.

For hints and tips for submitting your tax return see page 30 for details.

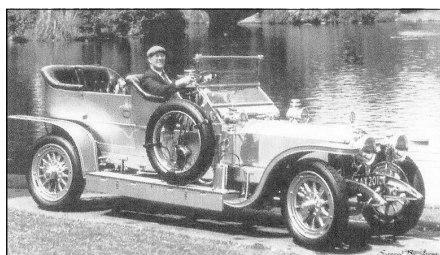
Put it on your Calendar...  
**Beverley Youth Talent Show**  
Saturday 30 July  
See page 7 for more details.



## DRINK WISELY HOME SAFELY

COURTESY CAR AND  
DRIVER  
AVAILABLE FROM  
5PM UNTIL 10PM  
(Except Tuesdays & Thursdays)

This service is donations only.



Please book through the  
Beverley Hotel on  
9646 1190  
or the  
Freemasons Tavern on  
9646 1094.

Donations to be placed in the box at  
the hotel. Donations will be donated  
to charities. (eg Ambulance,  
Hospital etc)

Female passengers using this service  
are to be accompanied by another  
adult for safety implications.

### **BILL CHAMBERS**

**Chartered Accountant  
&  
Registered Tax Agent**

Tax return preparation  
Financial and accounting  
advisory services

Office hours:  
Thursday  
9:15am – 5:00pm

129 Vincent Street, Beverley  
96461 566 (Monday – Friday)

## **Beverley Events Committee**

With so many exciting things happening within the town of Beverley recently many groups and people within the community had discussed the need for a coordinated approach when planning was being undertaken for community and district events. This discussion has eventuated in the formation of the Beverley Events Committee.

The objective of forming the Beverley Events Committee (BEC) is to have a coordinated community approach and focus on key events in the town to encourage more visitors to wonderful Beverley. This will provide business with greater income and local people more activities within the town in which they live. It was clearly demonstrated over the Easter weekend what the town has to offer and the way in which the various community groups and businesses can work together to promote and co-ordinate events and activities in our town.

On 4<sup>th</sup> May we held the first meeting for the Beverley Events Committee (BEC) at the Town Hall. It was discussed that the core committee members will include Beverley Shire, Beverley Tourist Bureau, Beverley Community Resource Centre (CRC), Beverley Agricultural Society, Beverley Art Gallery Society and Avondale Farm Project Association with other parties from within the community to be included on the communications list. This communications list will be a work in progress to get interested parties details together.

If you are aware of anyone that would like to be part of the communications list (sporting groups, activity groups, clubs, local P & C etc) can you please provide the Beverley CRC with the following as they will be compiling the list?

Name  
Group/Business Representing  
Position in Group/Business Representing  
Postal Address, Email, and Phone Contact Number

Beverley CRC Contact details are: Ph: 9646 1600,  
Email: [beverley@crc.net.au](mailto:beverley@crc.net.au)

The three focal events identified for the Beverley community (at this point in time and not limited to) include the Easter Weekend, Beverley Agricultural Show and Beverley Harvest Festival at Avondale. At the meeting it was agreed the best structure for this Committee moving forward was to have several meetings throughout the year and increase the discussion between community groups through the communications list.

As the formation of this Committee is a new initiative for Beverley if you have any feedback (positive and negative ) it have would be greatly appreciated to make sure it meets the requirements of the community.

Kelly Piper  
Beverley Events Committee Member  
Phone: (Preferably after hours only) 0408 952 790  
Email: [piperk83@live.com.au](mailto:piperk83@live.com.au)

### *Mews Electrical Service* **Lothar Mews** Electrical Contractor

Lic. No. 000797

PO Box 429  
Beverley WA 6304

Ph/ fax: 08 9646 1918  
Mob: 0419 851 934



## President's Report

24<sup>th</sup> May 2011

What a welcome relieve to receive the May rain. Hopefully there has been additional rain by the time you're reading this!

### Easter Art Exhibition

The 43<sup>rd</sup> Easter Art Purchase Exhibition was again a resounding success. Congratulations must go to the Art Gallery Committee and their dedicated helpers for the professionalism and commitment undertaken on behalf of the community and Shire of Beverley toward providing this increasingly popular event.

### Draft Strategic Plan

Out for public comment later in the month.

### Wheatbelt Land Use Planning Strategy

The WA Planning Commission has developed a Draft Wheatbelt Land Use Planning Strategy to guide future planning for the region. This can be viewed at [www.planning.wa.gov.au](http://www.planning.wa.gov.au) or by requesting a copy from the Shire Office. If you are interested please have a look at it and submit your comments in writing to the Shire Office or [planner@beverley.wa.gov.au](mailto:planner@beverley.wa.gov.au) as soon as possible.

### Around the Town and District

The roadside storm cleanup continues. Council has accepted a tender for delivery of a new John Deere 670G grader as replacement of the 670CH grader. Picnic tables have been installed near the beginning of the Top Beverley road and in the caravan park camper's area. The Campers Kitchen is taking shape, a more accessible RV dump site is being installed and the retirement village has a new gazebo.

### Avondale Community Update

It is proposed to hold an update meeting for the community in relation to Avondale toward the end of June. Following date confirmation, the details will be advertised in the Bulletin weekly newsletter.

The Avondale Farm Project Association, Shire of Beverley and National Trust are working together toward securing a favourable and sustainable future for this significant regional and state asset that has become such an important part of our community.

### Easter in Beverley 2011

What an amazing buzz there was in Beverley over Easter following the collaborative approach of community groups to promote what was on, encourage additional activities and services, such as the market day on Saturday, and co-ordinate information for the Resource Centre to produce a "What's on in Beverley over Easter" flier, which included opening hours of various businesses. This was distributed at the Caravan and Camping Show, in information packs for the Orienteering event and around town for visitors.

### Meals on Wheels 30<sup>th</sup> Anniversary

This wonderful service has been in existence in Beverley for 30 years and in recognition of this milestone the Beverley Health Services and Shire of Beverley are proposing an afternoon tea event at which the Hon. Robyn McSweeney MLC will be officiating. Please mark Tuesday 2<sup>nd</sup> August in your diary.

Dee Ridgway  
Shire President



Government of Western Australia  
Department of Health  
WA Country Health Service

## JUNE - BOWEL CANCER AWARENESS MONTH

June is Bowel Cancer Awareness Month and the Beverley Health Service with the Cancer Council of WA are inviting you to attend a FREE Bowel Cancer awareness talk on Wednesday 22 June 2011 at the Beverley St John Ambulance sub-centre at 1 pm.

Guest speakers include:

Dr Emmanuel Awogun and Dietician Lauren Cotter

Topics will include:

1. Signs and systems of Bowel Cancer
2. Testing for Bowel Cancer
3. Diet to aid in the prevention of Bowel Cancer

All interested community members are most welcome to attend.

For further information please ring:  
The Beverley Hospital on (08) 9646 3200  
during office hours.

## Beverley Plasterboard

Walls and Ceilings

New homes and renovations.

**Specialising in:**

Decorative Cornice  
Crown and Corbels  
Arches  
Ceiling Roses

Prompt quotes, efficient service.

**Chris Elliott**

**0412 427 939**

**[beverleyplasterboard@westnet.com.au](mailto:beverleyplasterboard@westnet.com.au)**

**SHIRE OF BEVERLEY**  
**TOWN PLANNING SCHEME AMENDMENT**  
**AVAILABLE FOR INSPECTION**

**Amendment 18 to Town Planning Scheme No.2**

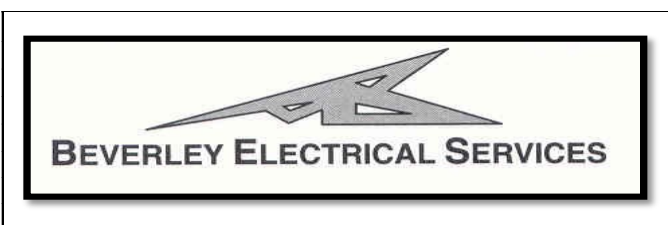
Notice is hereby given that the local government of the Shire of Beverley has prepared the abovementioned town planning scheme amendment for the purpose of:

1. Incorporating the zone "Light Industry" into Town Planning Scheme No. 2;
2. Rezoning Lot 126 Great Southern Highway, Lots 96, 97, 98 & 99 Hunt Road and Lots 124, 378 & 377 De Lisle Street, Beverley, from Recreation and Open Space to Light Industry;
3. Amending the Scheme Map accordingly;
4. Incorporating provisions into Town Planning Scheme No. 2 to allow the subdivision of Homestead lots; and
5. Incorporating provisions into Town Planning Scheme No. 2 to allow Council to vary a planning approval.

Documents setting out and explaining the town planning scheme amendment have been deposited at 136 Vincent Street, Beverley, and will be open for inspection during office hours up to and including 8.30 am to 4.00 pm.

Submissions on the town planning scheme amendment may be made in writing and lodged with the undersigned on or before 4 July 2011.

Keith Byers  
Chief Executive Officer



**Karl and Hollie would like to advise that Beverley Electrical Services will be closed for business from 15/4/11 until 4/7/11.**

**We apologise for any inconvenience this may cause, but we are unable to find a tradesman to keep the business running while we are away.**

**Dale will be undertaking other work in Beverley during this time however he is unable to complete electrical work, so please DO NOT approach him.**

**Once again we apologise for the inconvenience but everyone needs an extended break once in a while.**

**We look forward to servicing your electrical and solar needs on our return.**

0429 887 535  
PO Box 2 Beverley WA 6304  
Fax 9641 6150  
Email sales@beverleyelectrical.com.au

EC 006578

ABN 86 966 138 620

## Grader Hire

**Penchar contracting**

**For all your grader requirements including, but not limited to**

- Roads/tracks
- Contours /drains
- Contours/interceptors decommissioned
- Fence lines
- Roaded catchments
- Airstrips
- Firebreaks
- House /shed cuttings

**John Deere 770BH/570A graders**  
( cat 14 size/cat 120 size)

**Please ring**

**0427291212- Charlie**

**0896460794- Penny**

*Serving the central wheat belt*

# BEVERLEY BAKERY

**IS NOW OPEN DAILY FROM 6 AM TO 2 PM  
(except Tuesdays and Wednesdays)**

**Mark and Angie would like to thank all the good  
people of Beverley for their support.**

**For orders phone:  
Mark 0411 256 681  
123 Vincent Street**

The President and members of the Beverley Branch of CWA thank all who supported our Street Stall on Sat. 22<sup>nd</sup> May.

The Raffle winners were as follows:

CWA RAFFLE RESULTS: Sat. 22<sup>nd</sup> May.

Ticket Number					
1	Jean Boyle	F62	6	Peter Fox	F36
2	Joy	C48	7	D. Eastwell	F71
3	Tony James	F24	8	M. Farenden	C47
4	Tony James	F21	9	Sarah Miller	C40
5	Maree Hutchinson	C69	10	Teresa Reid	F46
			11	Joy	F74

L. Sims  
Branch Secretary

**Batteries  
re-conditioned.**

**Trucks, Cars, Bikes**

**Full particulars:  
Barry 0427 441 407**



**2011 RANGE ON SALE NOW**

Many local native trees, shrubs,  
groundcovers and reeds

Suitable for revegetation, plantations  
and water wise gardens

Phone Lisa on 96461716

[www.talbotnursery.com.au](http://www.talbotnursery.com.au)

**NEED PRACTICAL TRADE ASSISTANCE?**

Contact

*Design-Man*

(Design and Manufacturing Services)

Solving a range of practical needs and problems.

**Specialising in:**

- ✓ Cabinet making
- ✓ Shop fitting and modifications
- ✓ Modular designs eg Work spaces
- ✓ General carpentry
- ✓ Installations and modifications
- ✓ Metal based fabrication
- ✓ Motorhome and Caravan fitouts
- ✓ Tiling
- ✓ Advice and training

**Guy Slingerland**

**0403602335**



## BEVERLEY TOURIST BUREAU REPORT

We are now proud of our new visitor signs. The big I and other signs coming into town make our entrance quite smart. A special welcome to our new volunteers Helen, Glenda and Nina. "We are grateful to have new help in keeping the centre open.

Our visitors have included a Qantas WW11 Pilot, tourists from USA, Queensland and Adelaide. Recently a group of seniors from Perth enjoyed our museum and gifts. Thanks to Reg and Helen for being able to attend to them.

Our Beverley Book is always a popular item, amongst recent arrivals.

We are open from 9 am to 4 pm. Our thanks for all who support the Bureau and promote our town.



## FOR THE FIRST TIME EVER

Commencing at Midday on the 16th June 2011, there will be the Inaugural Three Sheep Trial conducted at Avondale Discovery Farm.

The trial will continue for three and a half days with the best sheep dogs in WA competing.

These dogs will travel from as far south as Albany, east from Kellerberrin and north as far as Miling to compete.

There will be approximately 170 runs during the three days culminating with the Finals conducted on the 19th June when the 12 top scoring dogs will compete for the Championship.

This is a great opportunity to see some of the best dogs in WA put through their paces.

Our Final day will be held in conjunction with the Avondale Ploughing Festival.



## YORK CHIROPRACTIC

MacLachlan Centre, Trews Road, York  
Clinic available every week - by appointment only.

**Tel: 9641 1500**

**Dr Alexandra [Sacha] Browne**

B.Sc [Chiro] B.Chiropractic  
Doctor of Chiropractic



## BLECHY'S TYRE AND BATTERY

**City Prices**

**All Major Brands**

**Second Hand**

**Batteries, Repairs, Fitting, Balancing**

Bridgestone Preferred Dealer

Ph/fax Mick on 96461 607 or a/hrs 96460 066

48 Dawson St.

(Old Telecom shed)



ELECTRICAL SERVICES

**SHANE WHEAT**  
**0419 124 823**

All your electrical and water pumping requirements. Great deals on solar and electric submersible pumping systems. Installation and repair of household pressure pumps. Domestic electrical installations and repairs.

PO Box 423 Beverley WA 6304 • EC 9626

www.beverleywa.com

# Wanted Dead or Alive

Your old truck/ute

The Beverley Truck Muster (August 20/21) promises to be a fun filled weekend and to make it even more so we are calling in all of your old trucks or utes.

Restored or not, just show up for one day or both. Either drive your pride and joy to Avondale or bring it on a trailer. There will be prizes for different categories.

On the Sunday there will be an auction of vintage/old trucks and for this we need your old trucks, you know, the old one by the shed that you want to restore one day but deep down realise that this is just a dream. You can either donate your vehicle to Avondale to sell or take the cash.

This auction will be advertised in the vintage truck magazines and will attract attention from the Eastern States.

Given time constraints we will be limiting the auction to 25 vehicles.

Please contact Alan on 0427 447 608 for further details.

run explore  
play swim  
chase

Located right opposite the beach in Geographe Bay, Busselton. The perfect base to kick off your boots for a fun family holiday. Play on our beach and swim all year round in our heated indoor and outdoor pools. Kids love Mandalay and big people do too. Three playgrounds, games room, summer kids activities and giant jumping pillow. A range of 1, 2 & 3 bedroom holiday villas, chalets and beach cottages available during December, January, February and March. Book your next holiday through our reception on 1 800 248 231 or online at [www.mandalayresort.com.au](http://www.mandalayresort.com.au)

Receive a FREE bottle of Swooping Magpie, Margaret River wine when you make an accommodation booking with this number RN511 Expires 15/12/2011 Conditions apply.

**Mandalay**  
Holiday Resort and Tourist Park

*The Beverley DHS P&C is proud to present a night of entertainment and enjoyment with the*

## Beverley Youth Talent Show

**Date: Saturday 30th July 2011**

**Where: At the Beverley Town Hall**

**Time: 6:30 pm**

If you are under 16 and interested in performing, please contact Kellie Shaw on 9648 1022 or email at [ak.shaw@bigpond.com](mailto:ak.shaw@bigpond.com)

# EQUESTRIAN

**FOR NATURAL  
HOOF TRIMMING  
OR Paddock  
TRIMMING**

**PHONE JIM ON  
9646 4152**

**REASONABLE  
RATES**



# THE BLUE LINE

Beverley Police Station - Western Australia Police

Phone: 08 9646 3333

Fax: 08 9646 1447

Beverley.Police.Station@police.wa.gov.au

Hello Beverley,

Well officially winter has commenced and while this can be a great time of year for the farmers, it is also one of the most dangerous times on our roads. So it's important to remind people to slow down when you are driving. You don't need to rush to your destination; the aim is to get there safely. Remember to drive to the road conditions. If it is wet slow down, even pull over the side of the road in a safe place if the weather is too bad. Let it pass and then continue on your way. Being more cautious and respecting other road users will greatly reduce the risk of a crash. The last thing Kerry and I want is to go to your relative's house and explain to them that you won't be coming home.

With this in mind, you will see us out and about with the speed gun in hand. This won't just be on the main highway, but all the streets around Beverley. Whilst on the theme of being out and about I have had people ask when is the best time to attend the police station to speak to us. Unfortunately there is not a best time to attend the police station. Modern policing is all about being out on the road and being able to attend to the community in a more responsive manner. We are mainly out driving around not just the townsite of Beverley but the Shire of Beverley to ensure you have the best police service available.

If you wish to come into the station, give us a call on the phone number above. If we are available we will answer the call. Sometimes that is not always the case and if that does happen the phone call goes through to Northam or Perth who answer on our behalf. Leave them your contact details and when we are available we will give you a call. Alternatively if you see us driving past in the police car, stop us and we are more than willing to answer any questions you have.

On a bright note (and I mean that literally) Beverley police and Lyn Kay are looking at some programs with the youth of Beverley. One of these programs is something similar to "Urban Art". This involves creating some murals around town on various buildings, (all art will be collaborated and painted by our local young people in partnership with a professional artist.) To get this program started we would like to gauge the interest of anybody who is interested in donating wall space to help with this project. We are looking at Silos on farms near the roadsides, and or building walls in the middle of town. If you are willing to donate the space then please contact us. The photograph below is of York Police Station which was recently painted and is very similar to what we are trying to achieve with this program. The roadside silo idea will especially focus on road safety messages, however will be bright and will attract positive attention, making a difference to the attitudes of all people who use our roads, both locals and visitors alike.



Stay Safe  
Darrell and Kerry

## GARAGE SALE

Saturday 25 June 2011  
10 am to 4 pm  
Lot 20 Great Southern  
Highway  
(7700 York Road)

Crockery, glassware, pots  
and pans, 2 pumps, tools,  
electric saw, ski, Reece  
Caravan hitch etc, bird cage,  
dog cage, pallets, some  
furniture and more.

## FOR SALE

'Buffet/Bar'  
Pine with glass's cabinets, drawer,  
wine rack and cupboards.  
Can be dismantled.  
\$500 ono.

9646 1117

## WANTED

Small flat or house to rent  
or care take/house sit.

Will put in 20hrs a week work for  
accommodation if on farm.

Ring Wes on 0435 009 186

## FOR SALE

Nissan Pulsar 1991. Runs very well.  
No rust. 6 months rego.  
\$1,100 ono.  
9646 0603

## Friendly Club

will be held at the Alex Miles Lodge  
on Thursday 9 June 2011 at 2 pm.

Hosts will be the St Mary's Society  
ladies.

Come along for a fun afternoon.

Coordinator  
Sylvia Seddon  
9646 1072





## SHIRE OF BEVERLEY SALE OF MOTOR VEHICLES

Submissions are invited for the purchase of motor vehicles from the Shire of Beverley.

The items available are listed below;

- 2010 Holden Commodore Calais Sedan (BE1), excellent condition travelled 26,135 kms as at 25 May 2011, licensed to 30<sup>th</sup> June 2011
- 2010 Holden Commodore Omega Sports Wagon (BEV0), excellent condition travelled 27,000 kms as at 25 May 2011, licensed to 30<sup>th</sup> June 2011
- 2010 Holden Commodore Omega Sedan (BE464), excellent condition travelled 24,330 kms as at 25 May 2011, licensed to 30<sup>th</sup> June 2011

All vehicles are available for inspection and inspections can be made by contacting the shire administration.

Submissions will close with the undersigned at 4.00pm on Monday 13<sup>th</sup> June 2011.

No submission necessarily accepted.

Keith Byers  
Chief Executive Officer  
Shire of Beverley  
PO Box 20  
BEVERLEY WA 6304

### THANK YOU

I can't thank the people enough for the cards and phone calls sent for Glenys.

You have truly warmed my heart.

Rob Domyer

---

### COMMUNITY ANNOUNCEMENT

#### **Beverley Community Paralegal Services**

Mal Roberts will be in attendance  
Mondays and Wednesdays  
9 am to 12 noon.  
Health permitting.  
From 1 June 2011.

Phone 9646 1495 for the urgent witnessing of legal documents by a Justice of the Peace.

---

PEACOCK  
FREE TO GOOD HOME

Phone: 9646 0461

*the sky's the limit.*

passive energy systems have the flexibility to help you take the steps towards a cleaner, smarter, more cost efficient energy solution.

WIND & SOLAR POWER

COMMERCIAL & RESIDENTIAL

GRID CONNECT OR STAND-ALONE

RURAL DESIGN SOLUTIONS

CUSTOMISED TO SUIT YOUR PERSONAL NEEDS & BUDGET

LOCAL BUSINESS - SERVING LOCAL PEOPLE

passive energy systems power from the sun

Licence# EC008564

Green Energy Council ACCREDITED

MEMBER

(08) 646 77 263 www.pvenergy.com.au

**Thankyou from Farmsafe WA Alliance**

Farmsafe WA Alliance is an independent, not for profit, non government organisation encouraging the way to safer farming.

We would like to thank those involved in the *Noise Injury Prevention and Management* workshop, which occurred in Beverley during March.

We would especially like to thank the attendees, presenters and businesses that donated door prizes.

For more information on the project, please visit [www.farmsafewa.org](http://www.farmsafewa.org) or call 9359 4118

Phone: 9359 4118 Fax: 9359 3468  
Email: [admin@farmsafewa.org](mailto:admin@farmsafewa.org)  
PO Box 118 Forrestfield WA, 6058

Project funded by: Government of Western Australia  
Department of Health  
Public Health

**OPENING HOURS**

Monday – CLOSED  
 Tuesday – Friday  
 8.30am – 4.00pm

Beverley Community Resource Centre  
 P.O. Box 310 Beverley WA 6304  
 P: 08 9646 1600 F: 08 9646 1295  
 E: [beverley@crc.net.au](mailto:beverley@crc.net.au)  
 W: [beverley@crc.net.au](mailto:beverley@crc.net.au)  
 ABN: 83 320 522 911

**Grant Writing and Project Planning**

This workshop is important for any Community groups that need assistance in applying for grant funding. Learn tips on planning a project and how to effectively set out a grant application.

A one day workshop held in Beverley  
 Monday 2<sup>nd</sup> July.  
 Conducted by Jodie Mortadza  
 From Regional Development Australia.  
 Call 08 9646 1600  
 to book your place

**Aussie Host**

The staff, volunteers and committee at the CRC have received certification in Customer Service Skills. The centre is now Gold Star Accredited.  
 ☺☺Well done☺☺

Our Administration Officer- Sam Fricker role playing a situation with Julie Bucknell the trainer.



Do you lodge your own Tax Return?  
 Do you earn under \$40,000 per annum?  
 Are you new to the workforce and don't know where to start?  
 Are you unsure on what you can and can not claim?  
 We can assist whether you wish to book and see our Tax Help Volunteer or if you need assistance in lodging your claim online by E-Tax we can help.



\*\*\*\*\*Parents and Guardians remember to keep your receipts for the Education Rebate\*\*\*\*\*

**CONGRATULATIONS JESS FLEAY**

The committee, staff and volunteers are so very proud of Jess Fleay completing her Certificate III in Business & Administration during her traineeship at the Community Resource Centre. We wish to further congratulate her in securing a job locally at the ANZ Bank. Traineeships lead to bigger and brighter futures.



**CYBER SECURITY AWARENESS WEEK**

Thursday 2<sup>nd</sup> June  
 10.30am and 2.30pm  
 Information Talks on  
 -Social Networking Safety  
 -How to secure your computer  
 -How to be Smart Online  
 -How to be Safe Online  
 -Cyber Bullying  
 Guest Speakers, Local Police & Fiona Bowden, Social Worker.  
 Morning & Afternoon Tea Provided

Proudly supported by



Department of  
**Regional Development and Lands**



**BEVERLEY ART GALLERY  
COMMITTEE**

invites all interested persons to  
attend the  
ANNUAL GENERAL MEETING  
on Friday 10th June 2011  
at the Station Gallery,  
Vincent St, Beverley  
commencing at 1:30pm

Apologies to the Secretary ph  
0896464047 or  
email [wk.mclean@bigpond.com](mailto:wk.mclean@bigpond.com)

The Beverley Art Gallery Committee  
is a sub-committee of the Shire of  
Beverley with the objectives to:

1. Run an annual art purchase  
exhibition in Beverley; and
2. To display and maintain the  
Shire of Beverley's permanent  
art collection for the community  
of Beverley.

**GARAGE SALE**

At 54 Smith St on Saturday 18 June  
- no earlier than 8 am. Golf sticks  
and balls, timber, netting, generator,  
old trailer, various tools, patio tubing,  
ladders, wheels, bird cage, painting  
gear, 5hp Robin engine, assorted  
bric-a-brac, household items and old  
STUFF from Ron's sheds!!!



**K.P.L  
Electrical**

**Domestic, Industrial,  
Commercial, Solar,  
Reverse Cycle A/C**

**All installation &  
repairs.**

**Phone 0418 756 680  
EC 008194 L057147**



Your **LOCAL BEVERLEY**  
Ray White Sales Representative is

**Helen Stubing**  
**Mobile: 0407 96 46 11**  
**Email: [helen.stubing@raywhite.com](mailto:helen.stubing@raywhite.com)**

New Listings

**LANGSFORD STREET** 2.7acres, 4 bores solar pump  
and panel Vacant Land + 3acres with 3 x 1 House  
Yes 2 SEPARATE titles, both selling for the One  
LOW Price Both have magnificent views  
3 x 1 air con, wood heater, 6 Solar Panels, new ren.  
kitchen. Spa bath, Solar HWS **\$425,000**

**RAILWAY STREET NEW TO MARKET**  
3 x 1 Renovated house, Walk in Pantry, Sun Room,  
plus Separate Flat ideal for a Teenage Retreat or  
Granny Flat, easy care yard on two titles. **\$250,000**

**Sold** 18 HUSKING STREET  
26 LENNARD STREET

**REDUCED VINCENT STREET**  
3.85acres + Shed with Power Connected **\$170,000**

**REDUCED QUEEN STREET**  
3 x 1 House, Rev Cycle Air Con, Neg **\$177,000**

**REDUCED SMITH STREET**  
4 x 1 Very Neat & Tidy Just Move In **\$185,000**

**MONGER STREET**  
3 x 1 Very Neat & Tidy Just Move In **\$215,000**

**HUNT ROAD**  
3 x 1 Very Neat & Tidy Just Move In **\$215,000**

**REDUCED - WOW FORREST STREET**  
3 x 1 House, All renovated **\$225,000**

**REDUCED ELIZABETH STREET**  
3 x 1 Renovated home + Sunroom **\$225,000**

**DAWSON STREET**  
3 x 1 - 1914 Manse, High Ceilings, **\$230,000**

**REDUCED MORRISON STREET**  
3 x 1 B/Tile D/Evap Air Con. **\$230,000**

**SMITH STREET**  
4 x 1 BIR in 2 rooms, WIP Sun Room **\$255,000**

**REDUCED 13 MORRISON STREET**  
3 x 1 + Flat, Enc Patio Evap Air Cond. **\$260,000**

**REDUCED HUNT ROAD FAIRWAYS MANOR**  
4 x 2 home, S/Room, studio/office, **\$370,000**

**HARPER STREET 4.2ACRES**  
2 x 1+2 toilets S/Room, Garage, Shed, **\$315,000**

**BROOKING STREET JUST UNDER 5ACRES**  
2 x 1 Stables, Arena, Crush, Wash Bay, **\$385,000**

**LUKIN STREET ON 1 1/2 ACRES**  
5 x 2 + Formal Dining & Lounge, Study **\$599,000**

**REDUCED KOKENDIN ROAD**  
50 Acres elevated block views **\$295,000**

**DOBADERRY ROAD PROPOSED SUB DIVISION**  
100acres, Power, soaks & R/Water Tank  
**\$295,000**

**DOBADERRY ROAD 100ACRE PROP. SUB DIV**  
4 x 2 Open plan living, games room, tennis court,  
patio, shearing 4 stand shed, **\$595,000**

**SIMMONS ROAD**  
100 acre Block Developer's Delight **\$595,000**

**2865 WESTDALE ROAD 100ACRES**  
3 x 1, Study, G/Room Sheds, 2 Bores, **\$595,000**

**REDUCED YENYENING LAKES ROAD**  
197 Acres 4 Bedroom x 2 + Shed **\$720,000**

**Blocks in the following Streets:**

Railway	835m2	\$ 47,000
Railway	819m2	\$ 49,500
Reduced Bartram	999m2	\$ 55,000
Forrest	1214m2	\$ 65,000
Railway	728m2	\$ 65,000
Reduced Forrest	1111m2	\$ 65,000
Forrest	819m2	\$ 69,000
Seabrook	2023m2	\$ 69,000
Railway	819m2	\$ 72,000
Forrest	1214m2	\$ 75,000
Reduced Barnsley	2000m2	\$ 75,000
Reduced Prior Place	1783m2	\$ 85,000
Edwards	2023m2	\$ 90,000
Great Sth/Hwy	3acres	\$129,000
Chipper	7283m2	\$210,000

If you have assets, a WILL IS VERY NECESSARY.  
If you divorce or remarry you should DO A NEW WILL.

John will attend your home or farm in YORK,  
QUAIRADING or BEVERLEY to advise on and prepare  
your will or give general legal advice. (No family law.)

**JOHN MULLER LLB  
SOLICITOR**

**0419 899 779**

**Email: [mulja@bigpond.com](mailto:mulja@bigpond.com)**



# T.M. Hair Design



**Family Hairdressing at reasonable prices.**  
**For all your cut, colour & perming needs.**  
**Bookings are essential.**

We are now able to offer you the choice of four hairdressers.  
Call in or phone to select the right hairdresser for you.

**At Secrets...** Gifts for hard to buy for people are our specialty.  
We cater for all ages and genders.

If you have a specific request we will do our very best to source  
your needs. We have new stock arriving regularly so call in &  
check out our range soon.

**Are you feeling the cold???**With the cost of heating set to keep  
rising why not consider wearing wool. Choose from our range  
of Cardies & Jumpers in great fashion or classic colours, with  
beautiful silk scarves & pashmina's to compliment the look or  
give new life to your old favourites in the cupboard.

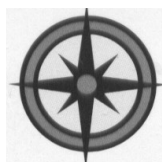
**We welcome browsing even if you go elsewhere  
for your hairdressing needs.**

***For all appointments: Call in to 100 Vincent St.***

***Or Phone 9646 1122.***

**ALL TYPES**

**ALL AREAS**



## **ALLROUND CONCRETE**

**SHED FLOORS, DRIVEWAYS, FOOTPATHS, HOUSE SLABS,  
SILO PADS, FERTILIZER/GRAIN/SUPA SHEDS**

**ROBBIE HIGGINSON**

**MOBILE: 0427 384 977**

**HOME: 9641 2459 FAX: 9641 2339**

**ABN: 26 997 512 874**

**PO BOX 345 YORK WA 6302**



## **Shire of Beverley**

### **SHIRE OF BEVERLEY SIGNAGE POLICY**

The Shire of Beverley Council at its 24 May 2011 meeting, has resolved to initiate a Town Planning Scheme policy for Signage within the Shire.

Submissions are invited on the draft policies with all comments to be received by the Shire by 20 June 2011.

A copy of the draft policies are available for public viewing during normal business hours at Shire Offices, 136 Vincent Street, Beverley or on the Shire website at [www.beverley.wa.gov.au](http://www.beverley.wa.gov.au)

For further details regarding this matter, please contact Shire Planner Peter Wright on 9646 1200 or [planner@beverley.wa.gov.au](mailto:planner@beverley.wa.gov.au)

**Keith Byers**  
Chief Executive Officer

---

### **BEVERLEY TREE AND GARDEN CLUB**

Our May meeting was sparsely attended with 20 apologies, so a small group of fifteen was at the Dead Finish. As short meeting ensured with reports of a successful Easter Stall and details of our trip to Perth later in the week.

On the following Thursday, fifteen members travelled on the community bus to Dawson's Nursery and then the Rose gardens. A wonderful day was had by all. Luckily, we took an extra car and trailer to bring back the plants so the bus wasn't too crowded. Thank you once again to Colin Cable for driving the bus.

Our next meeting is on June 13 at 10 am.

**SHIRE OF BEVERLEY  
SALE OF IMPOUNDED VEHICLE**

Submissions are invited for the purchase of an unlicensed 1994 Hyundai Hatchback Sedan.

The vehicle can be viewed at the Police Compound behind the Police Station.

Submissions will close with the undersigned at 4.00pm on Monday 13<sup>th</sup> June 2011.

No submission necessarily accepted.

Keith Byers  
Chief Executive Officer  
Shire of Beverley  
PO Box 20  
BEVERLEY WA 6304

**BEVERLEY DIABETES  
SUPPORT GROUP**

**Meets**

**At the O.T. Room,  
Beverley Hospital**

**WHEN: 2pm till 4pm  
TUESDAY 14<sup>th</sup> JUNE**

Contact Leonie Hill on 96464 149  
Type one and two diabetics of all ages are encouraged to attend as well as other members of the public interested or suffering from diabetes. Please park on the road or behind the St John Ambulance Centre.

**Note: The Diabetic Educator Nyaree Lawler will be attending this meeting to give a talk on BSL's and the management of them.**

**MONEY  
MATTERS  
INFORMATION DAY  
YORK & BEVERLEY**



*Share & Care  
Community Services Group*

Do you feel stressed by money worries?

Are you a Tenant?

Do you want to know what to do if the bailiff calls?

Are you "Safe at Home?"

Want to know about No Interest Loan Scheme and Centrepay?

Do you often wonder how some people can get by on much less?

Do you wish you knew how to do a basic budget?

Do you want to know the secrets of shopping to save money?

Do you want to know how to cook more for less?

Morning Tea, Lunch and Afternoon Tea provided

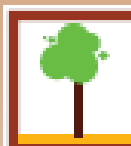
**16th June 2011 at**

**VENUE: YORK LAWN  
TENNIS CLUB  
Cnr Glebe & Clifford St  
York**



Bookings are Essential as Places are Limited

Call Share & Care to Register NOW-  
Phone: **96222828**



**York Estate Agents**

Commitment, Communication and Caring Guaranteed.  
We put you first.

All types of rural properties wanted, genuine qualified buyers waiting now.

See our window display at the Beverley Drapery (next to the cafe)

Register your email address and go into our monthly prize draw.

For confidential queries pls call Mike Bawden  
0403 268 158

80 Avon Tce York WA 6302  
Ph 96 411 335 Fax 96 411 334  
Email [yorkfn@westnet.com.au](mailto:yorkfn@westnet.com.au)  
Web [www.yorkfn.com.au](http://www.yorkfn.com.au)

**Cambodia Service Tour  
Street Stall on  
Saturday July 23, 2011**

Help support a PLC Service Tour to  
Cambodia.

Tour participants are Michaela and  
Garry Miller who will both be  
involved in building houses in  
Cambodia.

All funds raised will go towards  
house building materials in  
Cambodia.

## Digital TV switch delivers new channels for satellite viewers, Crook

SATELLITE television users in WA will soon be able to access the same channels as those living in Perth as part of a digital television switchover.

Federal Member for O'Connor Tony Crook said free to air digital TV channels were currently available for satellite viewers in regional and remote area of Western Australia.

Mr Crook said satellite viewers would need to switch to the Viewer Access Satellite Television (VAST) network to access the digital channels.

"This will mean that current satellite television users on the Aurora (Optus) network will need to purchase a VAST satellite decoder before 2013 to continue to access free-to-air television," Mr Crook said.

All of the digital channels from ABC and SBS are currently available on VAST nationwide including ABC, ABC2, ABC3, ABC News 24, SBS HD and SBS TWO.

Satellite viewers in WA will also have access to standard definition channels from GWN, WIN and TEN.

From July 30 2011, the VAST service will provide all nine standard definition channels as well as high definition channels including ONE HD, Eleven, GO!, Gem, 7TWO and 7mate.

Mr Crook said this would be a significantly better service for satellite users.

"This will be a huge improvement in quality and choice for satellite viewers in WA, who will have access to the same digital channels available in Perth for the first time."

Mr Crook said non-satellite viewers would also gain access to these digital channels as the digital television roll-out took place over coming years.

"This will result in all households in WA having the same access to digital TV as Perth by the end of the digital switch in 2013," Mr Crook said.

Minister for Communications, Senator Stephen Conroy, labelled the move as "historic" when he confirmed the announcement earlier this week.

The Minister also confirmed that the Government would provide a subsidy for households that will be forced to move to satellite television as a result of the digital switchover to convert to the VAST network.

With the digital TV changeover near-

ing completion in Queensland, Federal Member for O'Connor Tony Crook is reminding regional Western Australians to ensure they are digital TV ready.

Television viewers will need to have a digital television or purchase a digital set-top box before the current analog signal is switched off in 2013. "The important thing is you do not need to purchase a new television to access the digital network, you only need a digital set-top box to make the changeover."

To learn more about the digital TV switch visit [www.digitalready.gov.au](http://www.digitalready.gov.au) or call 1800 201 013.

### RDA Wheatbelt Chairman retires

The Board and Staff of RDA Wheatbelt regretfully announce that Chairman Mr David White has retired after 8 years in the position.



Mr White is a strong advocate for the Wheatbelt region and in his volunteer position with the Board has committed a huge amount of time and resources to sourcing initiatives that have brought great benefits to the region.

Mr White has been a member of a number of organisations over the years including Director of Wesfarmers Ltd, Treasurer of the Royal Agricultural Society and Treasurer of Parkerville Children & Youth Care. He will continue to be involved in his home town of Beverley with the Anglican Church and Meals on Wheels.

The Board and Staff of RDA Wheatbelt Inc would like to express our immense gratitude to David for his willingness to commit so much of his time and expertise whilst supporting the organisation.

WD & LM SLEEP

# Kokeby Concrete

Specialising in

Concrete, Sand pads, Bob Cat Hire, Site and Block Cleanup (can organise grano workers)



**P: 08 9646 4163 M: 0429 461 314**



**SUNDAY 5 JUNE**  
**LOT 364 DUFFIELD STREET**  
**BEVERLEY**  
**(OFF MCNEIL STREET)**

Various interesting items...handicrafts, old camera equipment, radio/cassette, telescope, curios, collectables, tools, air compressor/equip (new), old books, workshop manuals, jigsaws, saws, paintings, old binoculars and sundry items

## DRUG & ALCOHOL COUNSELLING

The Wheatbelt  
Community Drug  
Service Team will be  
visiting Beverley  
Hospital every 2nd  
Thursday.

For appointments  
please phone  
Debbie on 96211 055.

### The Value of a Smile

It costs nothing, but creates much.

It enriches those who receive, without impoverishing those who give.

It happens in a flash and the memory of it sometimes lasts forever.

None are so rich that they can get along without it and none are so poor but are richer for its benefits.

It creates happiness in the home, fosters good will in a business and is the countersign of friends.

It is rest to the weary, daylight to the discouraged, sunshine to the sad and nature's best antidote for trouble.

Yet it cannot be bought, begged, borrowed or stolen for it is something that has no earthly good to anybody till it is given away!

Unknown Author



# FREE SKIN CANCER SCREENING

## Lions Club of Beverley (Inc.)

*as a joint project with*

## The Lions Cancer Institute Inc

Team will conduct a *Free* Skin Cancer Screening

**Saturday 11th June 2011**  
9am -3pm

***If you are 20 years or older and can answer  
'YES'  
to three (3) of the following  
you may be at risk***

- A family member who has had a malignant melanoma.  
(Mother, Brother, Sister or Grandparents)
- Five or more moles (not freckles) on your forearms.
- Previously had moles removed that were not cancers
- Previously had skin cancer
- A mole or freckle, which is changing, size, colour or shape
- Fair skin that always burns rather than tans
- Had blistering sunburn as a child enough to stay off school
- Any inflamed skin sores that do not heal

Please telephone MARION ALEXANDER 9641 6051  
(7am to 8pm) for appointment.

## Sensitive sites WA information service online

An information service for growers identifying sensitive production sites is now available from the Department of Agriculture and Food website.

Grains Industries Executive Director Peter Metcalfe said the Department had recently written to known growers with sensitive production systems asking for their participation in a voluntary register of sensitive sites for use in 2011.

A sensitive site is considered a commercial property that needs consideration due to the nature of the production system. Examples may include certified organic, certified biodynamic, aquaculture, horticulture and viticulture.

This web site aims to provide an information service for producers to help them be aware of the location of any sensitive agricultural production systems in their area.

"The aim of this service is to assist growers with the preparation of risk assessment and risk mitigation plans for their ongoing production activities," Mr Metcalfe said.

"While this provides an additional information source for growers, it is important that growers continue to communicate directly with their neighbours."

The Department has had a geographic information system running for some time to help identify different production systems and in response to requests from growers for a simpler system has developed the Sensitive Sites WA map.

"This map, which is accessible at the Department's website, is part of our response to make information simpler for growers to access," Mr Metcalfe said.

"A similar mapping system has been used by cotton growers in the eastern states cotton growing areas to identify areas vulnerable to crop loss due to spray drift."

The Department has received

about 200 registrations for the site. To view the map, navigate to [www.agric.wa.gov.au](http://www.agric.wa.gov.au) and either click on the Sensitive Site Hot Topic button or search for Sensitive Sites.

The Department plans to update the Sensitive Sites WA map each year to help ensure the information remains current.

**FOR SALE**  
 4x4 JACKAROO 'S'  
 2002 V6 Auto, 7 seats  
 Cargo barrier, side steps,  
 roof rack, roof bar, spot lights.  
 All service history  
 Excellent Condition.  
 \$10,000  
 PH: 9646 1767



### CARPET & LOUNGE SUITE CLEANING



*It's Spring Cleaning Time!*



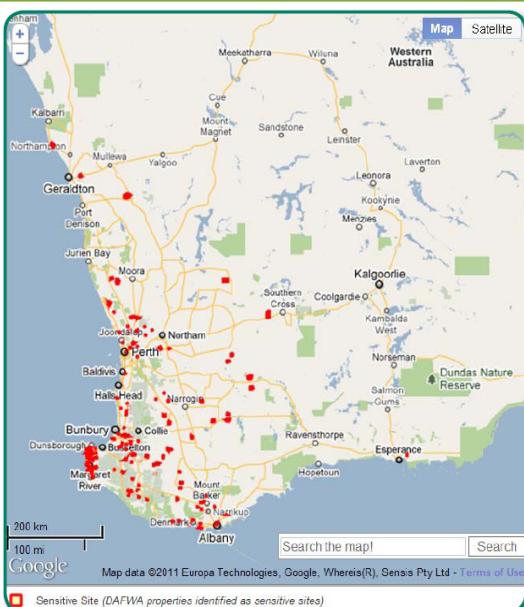
- \* Carpets Cleaned
- \* Lounge Suites Cleaned Like New
- \* Car Upholstery & Carpets Cleaned
- \* House Total Clean When Moving
- \* Fire & Water Damage Clean Up

- \* Stripping & Sealing Floors
- \* Vinyl
- \* Wood
- \* Slate

Phone Colin Today on  
 0417 971 786  
 Email [cdgrant1@bigpond.com](mailto:cdgrant1@bigpond.com)


Department of Agriculture and Food


## Sensitive Sites WA



An example of the Sensitive Sites WA map, which is available at [www.agric.wa.gov.au](http://www.agric.wa.gov.au) search for Sensitive Sites.

### Disclaimer

I understand and agree with the Department of Agriculture and Food Western Australia (DAFWA, which expression includes the State of Western Australia and its servants and agents) that:

1. The locations of these sites in the map and description of them as sensitive sites are based on information and requests provided to DAFWA by growers in DAFWA's database. DAFWA is not able to verify or identify the nature or extent of sensitivity of mapped sites, types of activities that may pose risks to the sites, or the extent of those risks. Nor can DAFWA advise whether there are other sites that may be sensitive, but are not shown on the map because they or their sensitivity are unknown to DAFWA or their owners did not request listing of them.
2. Mapped data and other information in this package may not be accurate, current or complete due to changes which may not be notified to DAFWA or may not be immediately updated in this package.
3. I should not make significant decisions in reliance on information obtained from this package, but should make my own investigations, consult relevant property owners and obtain updated professional advice relevant to my circumstances.
4. I accept all risks and responsibility for losses, damages, costs and other consequences resulting directly or indirectly from using this site or information or material in it, and
5. To the maximum extent permitted by law, DAFWA excludes all liability, in negligence and otherwise, to me or anyone else, resulting directly or indirectly from me using this site or information or material in it. I release DAFWA from all such liability.

[www.agric.wa.gov.au](http://www.agric.wa.gov.au)



# HAYMAN ROOFING DOMESTIC/COMMERCIAL & INSURANCE



## ROOF REPLACEMENT, INSULATION OR RESTORATION

- Gutters cleaned/roof vents installed.
- Leaks repaired - pressure washing roofs, and recoating.
- Rain water tank installation.
- Gutters and downpipes replaced.
- Patio installation.
- Re-roofing or restoration.

Servicing York/Beverley/Brookton

**Mick Hayman**

**'YOUR LOCAL ROOFMAN'**

**Telephone 0427 588 909 or 9646 1848**

## BEVERLEY BRANCH, COUNTRY WOMEN'S ASSOCIATION

[www.cwaofwa.asn.au](http://www.cwaofwa.asn.au)

Our meetings have returned to afternoons on the second Friday of each month. The Street Stall was held on Saturday 21<sup>st</sup> May. Raffle results are printed elsewhere in this Blarney - many thanks to all who supported our stall.

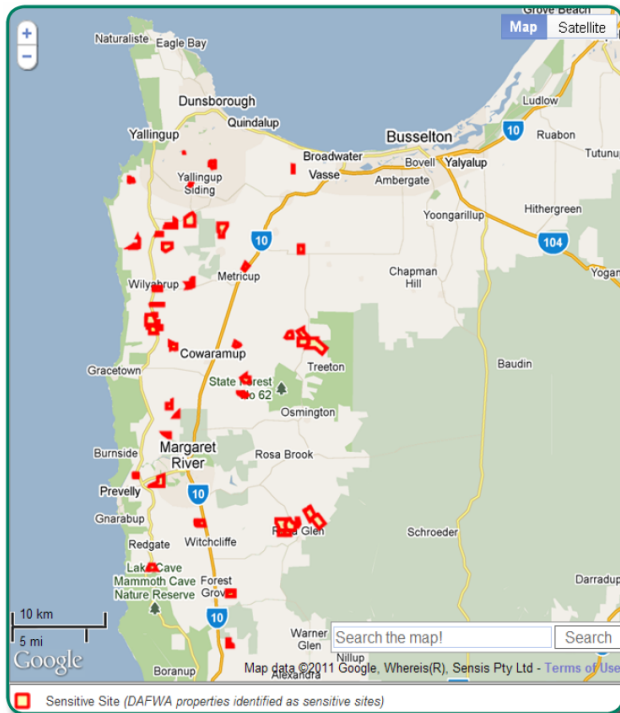
June meeting will be held on Friday 10<sup>th</sup> June at 1.30pm for a chat and 2.00pm for the meeting.

As the cost of replacing the vinyl in the kitchen was prohibitive, the damage to the existing floor covering has been repaired very well and is not obvious.

We look forward to our International Lunch on Thursday 16<sup>th</sup> June when we will share Moroccan dishes. We will have a guest speaker and display of artifacts. Members will start at 10.00am to set up and lunch will be at 12.00 noon. Prospective new members would be made most welcome. Contact L. Sims for further information.

Hostesses for June Meeting –  
L. Sims & J. Boyle

L. Sims  
Branch Sec.  
9646 1243



An example of a magnified area of Sensitive Sites WA map.

### 2012 Update to Sensitive Sites WA

As the location of known likely sensitive agricultural production systems may change, the department plans to publish an updated Sensitive Sites WA map early in 2012. If you would like to register your interest for inclusion of your property on the 2012 map, please send an email to [sensitivesites@agric.wa.gov.au](mailto:sensitivesites@agric.wa.gov.au)

For and on behalf of the Westralian Agriculture Authority, permission is given to reproduce this document.

#### Important disclaimer

The Chief Executive Officer of the Department of Agriculture and Food and the State of Western Australia accept no liability whatsoever by reason of negligence or otherwise arising from the use or release of this information or any part of it.

## EAST AVON PEST CONTROL



Lic. No. 358

**For all termites, spiders,  
rodents, termite  
inspection reports.  
Pre-treats for house  
pads etc.**

**25 years experience.**

**Ring Rodney Wells  
Mobile: 0428 466 251**

# Beverley District High School



## Beverley District High School News

Hello and welcome to our June edition. It was great to hear the sound of rain on the roof and with it came huge smiles from everyone in the community. Let's just hope that this will be the start of a great season for our farmers.

Welcome back to all our staff and students for what will be a busy term again. Welcome back to our Principal Norm Ireland who went on a Study Tour of Scotland. Norm and Wendy had a great time and sounds like Wendy must have visited all the shops as their suitcases came back overflowing!!!!

By the time you read this, the Cross Country Run would have been held and this year the students will be participating in fine weather. Results will be published in the school newsletter, on the School website and in the July Blarney.

### **The West Australian's School Wish List Competition**

Beverley District High is very excited to announce that we have won \$5000 in the recent "The West Australian" competition. Thank you to the community for sending in your coupons. We may be a small school but we were randomly picked from the draw. Just shows you've got to be in it to win it. Now what do we buy!!!!

**YCDI (You Can Do It)** This program's focus is on building social, emotional, and motivational capacity of young people rather than on their problems and deficits. It encourages prevention, promotion, and intervention efforts (school, home and community) in order to build the social and emotional strengths of young people. Currently our school is working together on the foundation of **Resilience**.

### **Attendance**

A new attendance initiative which will start next week is called 'The Attendance Club'. For students to be a member of the attendance club, they must have an attendance rate of 90% or more. This will exclude approved absences including educational activities, excursions etc. At each assembly, a raffle will be drawn for students who are in 'The Attendance Club' as of the day of assembly.

Raffle winners will then be invited to choose a prize from Mrs Bailey's office. Students can check with their classroom teachers on assembly days to see if they are a part of The Attendance Club.

I will advertise regularly in the newsletter our whole school attendance targets for 2011 and where we currently stand. Our target for regular attendance is to have 77% of our student population meeting the regular attendance cut-off of 90% each term. We also aim to keep the percentage of unauthorised (those absences where a suitable reason is not provided from home) below 10% for the year.

### **Staff News**

Congratulations to Miss Mitting and Mr Brown as they announced their engagement last Sunday. Welcome to Mrs Jenny Gates who has joined our staff replacing Mrs Sue Carbone. Please make Jenny welcome; she will be with us for the duration of Term 2. Mrs Carbone has had hip replacement surgery and is currently recuperating on crutches.

### **Beverley Youth Talent Show Term 3**

Start preparing your act now. Auditions will be held this term in week 8, 20-24 June. There has been lots of interest already and we can't wait to see what you come up with this year!

Anything goes..... For more info, please contact Kellie Shaw on 9648 1022 or at [ak.shaw@bigpond.com](mailto:ak.shaw@bigpond.com)

### **Mechanical Workshop**

Last Friday the Yr7s and the high school students commenced lessons in introductory workplace skills with a focus in the automotive area. The Yr7s have one session and the secondary students two.

The instructor, Mr Steve Adams, has extensive experience in teaching these skills to students and we are extremely fortunate to have his services.

We are seeking a small Japanese car for the students to work on. It may be unroadworthy, but should be intact and

the motor be able to run.

**Upcoming Events:**

**Please note: School assemblies have been changed to a Wednesday for the rest of the year.**

Wednesday 8 <sup>th</sup> June	ICAS ( <i>International Competitions and Assessments for Schools</i> ) Science Testing <b>Assembly – Secondary</b>
Thursday 9 <sup>th</sup> June	Interschool Cross Country – York
Tuesday 21 <sup>st</sup> June	ICAS Spelling and Writing
Wednesday 22 <sup>nd</sup> June	Secondary Winter Carnival – York
Thursday 23 <sup>rd</sup> June	Primary Winter Carnival – Pingelly
Monday 4 <sup>th</sup> July	Maths Day
Wednesday 6 <sup>th</sup> July	<b>Year 3/4 Assembly</b>
Friday 8 <sup>th</sup> July	End of Term

**A reminder to all visitors to our school: Please sign in at the front office before entering the school grounds. Thank you for your co-operation.**

Sera Minchin

### St Mary's Anglican Society

Our annual knitting day will be held in the Anglican Church hall on 6 July, starting at 9.30 am.

If you would like to come and help us sew up rugs for the needy, you are most welcome.

If you would like to knit some squares and bring them along or give them to a member, that would be appreciated too.

The squares are best if they are 9 inches by 9 inches and seems to be best knitted with 8 ply wool on size 8 (4mm) needles - roughly 45 stitches for an average knitter.

Last year we had a nice lot of rugs to send away to help warm people less fortunate than us.

Thank you very much.



Rose pruning time is nearly upon us, so start thinking about your roses in preparation for this year's Rose Show being held Friday 21 October.

## Have a FREE screening mammogram every two years. Once is not enough.



If you're a woman aged 50–69 years, call now to make an appointment for a FREE screening mammogram. Remember, the earlier a breast cancer is detected the better the chance of successful treatment.

The BreastScreen WA mobile will be at:  
**Beverley District Hospital  
(near nurses quarters)  
Corner John and Sewell Streets  
16 – 23 June 2011**

The service will then move to York and Northam.



Department of Health



[www.breastscreen.health.wa.gov.au](http://www.breastscreen.health.wa.gov.au)

# 13 20 50

DOH 21601



## Beverley Environment News

Welcome to the next edition of the Beverley Environment News! There are plenty of events and grant opportunities this month to keep you busy!

Free \$25 Fox and Rabbit bait vouchers are still available for landholders wishing to control pests on their property – see below for more information.

Want to receive email updates on current environment news? Please contact me to be added to the SEAVROC Environmental E-News list.

Jen Vincent  
SEAVROC Environmental Project Officer  
9645 0016 / 0447 898 995 [gshirepo@westnet.com.au](mailto:gshirepo@westnet.com.au)

### General News



#### FREE Fox and Rabbit Bait vouchers!

The SEAVROC Shires have been lucky enough to receive funding through Wheatbelt NRM to provide landholders with subsidised baits. There are a limited number of \$25 vouchers available to landholders for purchasing baits at your local bait supplier. Contact Jen Vincent on 9645 0016 / 0447 898 995 to get yours!

#### Men of the Trees' Farmscape Services – 'We: plan - prep – plant'

Men of the Trees' Revegetation Centre has recently launched its 'Farmscape Services'. We are expanding our team of on-ground staff for a wider spread around the State and expanding the services we provide. We are also offering a team to help with planting, weeding and/or erection of tree guards. Seed collecting and harvesting of sandalwood nuts will also be offered. Projects can be in urban or rural locations and of any size. If we can help, please contact the Manager of Men of the Trees' Revegetation Centre, Mrs Erin Lee on 9274 4842 or email [mottplanting@menofthetrees.com.au](mailto:mottplanting@menofthetrees.com.au) to discuss options.



#### Climate Kelpie – Rounding up Climate Tools for Australian Farmers



Climate Kelpie is for Australian farmers and their advisors. It connects you to tools and information about climate to help you make decisions about your farm business. Climate Kelpie is a 'one-stop shop' for climate risk management information and tools. [www.climatekelpie.com.au](http://www.climatekelpie.com.au)

### Grants and Events



#### Opportunity of a lifetime with Nuffield

Australian farmers wanting to take their business to the next level while experiencing the best world agriculture has to offer are urged to apply for a 2012 Nuffield scholarship. The Nuffield program begins with six weeks of group travel touring leading agricultural nations, including China, Brazil, USA, Canada and Europe. Scholars then focus in

on a topic of value to their business and industry, with a further 10 weeks travelling the world investigating their chosen research. Applications for 2012 travel close on 30th June, and there are 23 scholarships available. For more information and selection guidelines, visit [www.nuffield.com.au](http://www.nuffield.com.au) or contact Jim Geltch, T: (03) 5480 0755, E: [enquiries@nuffield.com.au](mailto:enquiries@nuffield.com.au).

## 2011 Innovation Generation Conference

Are you aged between 18 & 40?

Do you work in Agriculture and are interested in the industry's future?

Want to learn more about the issues impacting on you?

**Then the 2011 Innovation Generation Conference is for YOU!**



The Innovation Generation Conference, an initiative of Grain Growers Limited, tackles industry issues impacting on youth in agriculture and provides delegates with the opportunity to collaborate and develop their knowledge and skills. The Conference is targeted at young people, aged 18 - 40 years, working in the agricultural industry either as a producer or agribusiness professional. Online registrations open 9am Monday 4<sup>th</sup> April 2011 via the Grain Growers website [www.graingrowers.com.au](http://www.graingrowers.com.au)

### GYM MEMBERSHIP

Don't forget, Gym Memberships can be obtained from the Shire office or from [www.beverley.wa.gov.au](http://www.beverley.wa.gov.au).

Beverley Gym  
The Old Courthouse,  
Vincent St.



## Beverley Transport Service

Your local carrier for 30 years

**GRAIN, FERTILISER, LIME, HAY, WOOL AND GENERAL  
TRANSPORT**

**Agents for  
Optima Agriculture  
for Supply & Cart of Lime products**

**Garry & Sarah Miller  
9646 4066 or 0428 464 066**

**Tim Seed  
0427 386 009**

### Message From the Beverley Hospital Auxiliary.

It has come to the attention of the Hospital Auxiliary that we need to re-clarify what are acceptable items to donate to our OpShop.

Please do not donate items that are soiled or stained, have broken zippers or buttons, sleeves etc missing. We will not sell underwear or bathers. Bric-a-brac, toys, crockery or glassware must be undamaged and clean. By law we are not allowed to sell electrical items so please don't drop off unwanted electrical goods. The ladies who sort through the donated goods are volunteering their time and would appreciate your co-operation with this. The Auxiliary are very grateful for the support of the community and we hope to keep up the standard of quality we have been able to achieve. Thank you.

The next RSL General Meeting will be held in the RSL hall on **Friday 24th June 2011 at 7.30pm**. Members of the public are invited to attend.

The **Annual General Meeting** of Beverley Sub Branch of the Returned & Services League will be held on **Friday 12th August 2011 at 7.30pm**. All service Members and Affiliates are requested to attend.

R M Seymour  
Secretary





## Beverley Historical Society News

The May meeting of the Beverley Historical Society took place at the Dead Finish Museum on Monday 9 May, with eleven members and four apologies.

A review of the Quilt display and markets at the Museum over the Easter weekend was discussed, and all agreed that it added another great experience for visitors to the town.

Fred Bremner has been invited to attend the next meeting to talk about his book and memories of the town of Beverley, and has kindly agreed. We look forward to this.

Donations to the museum, shown to members at the meeting included: A child's sewn 'sewing apron', a needle case that was entered in the 1930 Beverley Show, a handkerchief

sachet; an unused confetti box (no longer used at weddings), a wooden pencil box, an ink blotter pad, a cook book, spice tin, a circular wooden clothes airer and an unidentified brass object. See picture below.

Volunteers have been doing a great job manning the Museum on Saturday afternoons and Sundays. We also welcomed a bus tour with 26 retirees from Western Power to the Museum on Wednesday 18 May. Comments about the museum were that we have a treasure trove that brought back many memories of days gone by, and that the museum is friendly and welcoming. They also visited the Aeronautical Museum and had lunch in town.

The Society has been liaising with the Tourist Information Centre to publish a new Beverley Walk. The existing map is a 45 minute walk. The new one is intended to be a two hour walk. Both walks aim to help visitors experience all the interesting and historical sites we have to offer.

An excursion planned for early June to the recently reopened 'Gwambygine Homestead' has been

postponed. We eagerly await a new date.

The State Historical Society Conference will be held in York in September, some members are considering attending.

The next meeting of the Society will be held on Monday 13 June at the new time of 1.30 pm at the Museum. New members always welcome.

### Mystery Object

Can you identify the brass object below?

Please post suggestions to:  
PO Box 182 Beverley 6304  
or email: moraganne@wn.com.au  
skleonhardt1@bigpond.com  
or contact any Historical Society member.



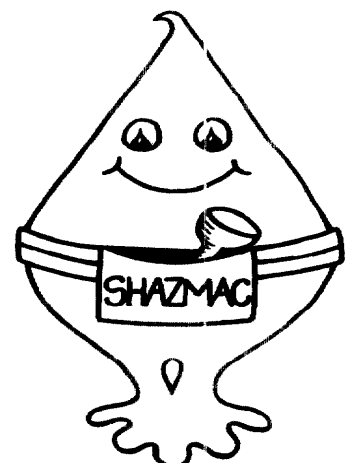
# SHAZMAC PLUMBING

Plumbing Licence: PL 5829 Gas Fitter Licence: GF 7422  
ABN: 18 531 685 326

For all your plumbing & gas fitting needs

Phone 0408 189 987 Fax 9641 4149  
PO BOX 481 York WA 6302  
shazmac1@westnet.com.au

NO job too small for your local plumber



# Macular Degeneration

What is Macular Degeneration?

Macular Degeneration (MD) is a disease affecting the macula, the tiny central part of the retina, at the back of the eye. MD is the leading cause of blindness and severe vision loss in Australia causing a progressive loss of central vision. One in seven people over 50 have some evidence of MD and the incidence climbs dramatically in our later years.

Our central vision is necessary to read, drive, recognise faces and see colours clearly, which are important to maintain our independence and quality of life. MD affects central vision and can cause legal blindness, meaning you are unable to read the top line on an eye chart. It does not cause "black" blindness, as some peripheral vision is maintained.

## Symptoms

You can have the early signs of MD without even knowing! This is why it is so important to have your eyes tested and macula checked by your optometrist or ophthalmologist as they can use a special camera to check the retina for any signs of the disease.

As the disease progresses, symptoms may include one or more of the following:

- Difficulty with reading or any other activity requiring fine vision.
- Distortion where straight lines appear wavy or bent.
- Distinguishing faces becomes a problem.

Dark patches or empty spaces appear in the centre of your vision.

What happens?

In the early stages, small, yellow, fatty deposits called "drusen" accumulate within the retina. Over many years or even decades, the drusen grow in number and may join together. They can then start to cause problems, as they disrupt the normal function of the retinal cells, causing some cells to die. This is called 'dry MD'. The end stage of dry MD is called 'geographic atrophy' and can result in substantial vision loss.

The most serious and dramatic type is called 'wet MD', where new, leaky

blood vessels suddenly form in the retina. This can result in rapid and substantial loss of vision and requires immediate attention.

## Treatments for MD

There are currently no treatments for dry MD, although the rate of progression of the disease can be slowed by adopting diet and lifestyle changes.

However, there is now a highly effective treatment for wet MD, consisting of a series of injections into the eye. There is a window of opportunity to gain the best outcomes for this treatment. It is therefore critical that if anyone has any of the symptoms of MD that they immediately seek help to see if treatment is appropriate.

Who is at risk?

There are three major risk factors for MD – age, smoking and genetics.

- Although early signs may appear from about 50 years, the older we are, the higher the risk. We need to be vigilant about early detection and practise risk reduction measures.

- Smokers are 3 times more likely to develop MD and develop the disease an average of ten years earlier than non-smokers.

- There is a 50% chance of MD if you have a direct family history, so it is critical to tell your children and grandchildren if you are diagnosed with MD.

## What can you do?

To help reduce the risk of MD:

- Have a regular eye test and make sure the macula is checked
- Don't smoke
- Keep a healthy lifestyle, control your weight and exercise regularly
- Eat a healthy, well-balanced diet. Limit your intake of fats, eat fish two or three times a week, eat dark green and yellow fruits and vegetables daily and a handful of nuts a week
- Always provide adequate protection for your eyes from sunlight exposure
- If you already have MD, you should consider a zinc and antioxidant supplement, in consultation with your doctor
- If you are not getting enough eye health nutrients in your diet, consider an appropriate supplement in consultation with your eye health professional

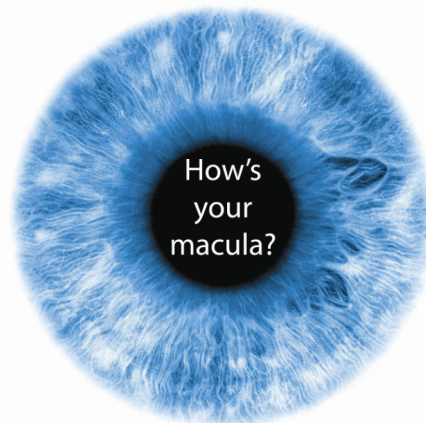
- Know the symptoms because early detection allows early intervention and helps improve outcomes. It may save your sight.

- Use the Amsler grid daily to test for symptoms of MD and any sudden changes in your vision.

- If any sudden signs of changes in your vision are noticed, obtain an appointment with an ophthalmologist immediately.

- If you have MD, make sure you and your immediate family are registered with the MD Foundation to receive all the necessary information, help and support. This information may help save your sight or that of someone in your family.

**For a free information kit and further advice, including a free Amsler grid, nutritional advice and more, please contact the Macular Degeneration Foundation on 1800 111 709 or by email to [info@mdfoundation.com.au](mailto:info@mdfoundation.com.au)**



**MARCELL'S CLEANING**  
For all your Domestic and Commercial Cleaning



**Phone:**  
**Maree Thornton**  
**9646 1558**  
**0429 646 155**

## **BEVERLEY YOUTH CENTRE**

### **MAY REPORT**

The Youth Centre is averaging 30 youth every Friday night and we have a great bunch of young people coming together to catch up, kick the footy, play a bit of basketball, softball, pool or just hang out, and along with my volunteer Robyn Cusack just enjoy the get together.

On the 26<sup>th</sup> April I took a bus load of Youth from York and Beverley, along with bus driver Ted and mum/helper Tammy Sing, to Cockburn Ice Arena.

Ted sat in the bus, enjoying the sunshine whilst Tammy and I were absolutely freezing watching the kids go around and around for 2 hours—next time we will take the “snow gear”! The kids had a ball, getting better as the day went on.

We all got back on the bus and headed to Ciccicellos in Fremantle for fish and chips. We managed to get seats by the water with the other hundreds of people and enjoyed some light entertainment by a comedian.

We then walked across the road to the Ocean, the kids getting wetter as they ran on the edge of the water. I suggested they go down to the bare minimum—they jumped at the chance and all dived in. I had 2 towels amongst 16 Youth. It didn't matter at all, the heater was on in the bus. They all had a great time!

On the 3<sup>rd</sup> May Ted took us on a Scenic trip to Paintballing in Gidgegannup, picking up the Youth in York first and arriving just after 9am ready for the long list of rules and instructions. All dressed for the experience, the Youth started on the different courses outside and had a ball! Some went through the rounds a lot quicker than others. I was definitely the “mother figure” carrying the jumpers, bags etc. as the day progressed and the challenges became more serious. We finished off with a sausage sizzle. The kids were a lot quieter on the way home.

We are going to organise a sleep-over next time where they will do some orienteering, teamwork with

compasses, learning to shoot at targets, watch some competition Paintballing DVD's—hopefully get some sleep in our “swags” and then paintballing the next morning. I will give more details and dates when all is organised.



ball this term and will give the children fruit and healthy foods.

We also have Wheelchair Basketball coming to Beverley on Tuesday 24<sup>th</sup> May, first at the School, AASC and then adults can come down and have a go at 6pm.

This is part of a grant I received from Department of Sport and Recreation and I hope all involved enjoy the experience!

Still need some interested artists to paint the Banners for the St Georges Terrace Competition!

Any questions please contact me at any time.

Active After School Programme is FREE and begins Monday 23<sup>rd</sup> May 2.30 to 4pm and Tuesdays 3pm to 4pm for all Primary aged students. We will be doing tennis and basket-

Lyn Kay  
Youth Development Officer  
0411 355 811 or 9646 0805

## **CBH HARVEST CASUAL WORK 2011**

APPLICATIONS NOW OPEN at [www.cbh.com.au](http://www.cbh.com.au)

### **POSITIONS AVAILABLE INCLUDE:**

- **Receival Point Operators**
- **Grain Samplers**
- **Weighbridge Officers**

(training provided prior commencement)

CBH requires people to work at our country receival points for the harvest period commencing in October/November.

To find out more information and to lodge your application please visit our website today.

**Applications close 30 June 2011.**

[www.cbh.com.au](http://www.cbh.com.au)





## WESTDALE PUMPS

All Makes and Models  
Sales and Repairs

Phone 9646 1656  
KEEP IT LOCAL

### Shearing Team

Available throughout the year.  
Beverley area for past 25 years.

Professional team.  
Good work ethic.

Call Ted Lewis  
0429 938 947/9577 1456

## Natway Furniture & Constructions

ABN: 62 824 726 465

Wayne & Natalie  
Ashworth

Qualified  
Carpenter & Joiner  
Tradesman

- General Building Work
- Furniture Construction  
& Restoration

27 Brooking Street,  
Beverley

**Phone:**  
**08 9646 0159**

Mobile: 0417 973 415  
(Wayne)

Mobile: 0429 491 039  
(Natalie)

# Boekeman Machinery



Are you looking for a new Maxxfarm?

We'll look no further than Boekeman Machinery Northam, contact our sales department today to enquire about the range of machines we have available.



<b>Maxxfarm 25</b>	<b>\$18,020*</b>
+Maxx-Lift 25 Loader with Standard Bucket	\$3,912*
+Maxx-Lift 25 Loader with 4-in-1 Bucket	\$6,320*

- Flat deck with folding ROPS for quick on & off access
- Comfy ergonomic seat
- Super easy-to-use controls

<b>Maxxfarm 30</b>	<b>\$20,595*</b>
+Maxx-Lift 25 Loader with Standard Bucket	\$3,912*
+Maxx-Lift 25 Loader with 4-in-1 Bucket	\$6,320*

- Agile and quick two range hydrostatic transmission
- 540 rpm rear power take off
- Super-tight turning circle



<b>Maxxfarm 40</b>	<b>\$32,542*</b>
Including Maxx-Lift 50 self leveling loader Bucket	



- Foldable ROPS for when space is tight
- 540 rpm rear power take off
- 1250kg hitch-lift capacity to suit a range of implements

<b>Maxxfarm 60 Cab</b>	<b>\$41,545*</b>
+Maxx-Lift 60 loader & Standard Bucket	\$6,020*

- High power, performance & reliability
- Optional factory fitted air conditioned cab, for comfy long days on the job
- 60 litre fuel tank, to keep you working longer between refills
- Simple serviceability, for quick & easy maintenance



ANDREW BOEKEMAN  
0427 084 229  
andrew@boekemans.com.au

WARREN HUNT  
0427 084 217  
warren@boekemans.com.au

[www.boekemans.com.au](http://www.boekemans.com.au)

(08) 9622 6344 Phn  
(08) 9622 6355 Fax  
PO Box 259  
29 YORK ROAD  
NORTHAM WA 6401

## KARRADALE LIVESTOCK TRANSPORT

ABN: 48 131 319 152

- \* Servicing, Beverley, Brookton, York and all Surrounding Districts
- \* Transport of Sheep and Cattle available
- \* Members of LTA and support the local Communities

Please Call

Peter Tomeo 0428 481 281

WE CAN NOW TRANSPORT CATTLE

"If you need your sheep or cattle transported please give us a call"

Support a Western Australian Owned Company





## Station Gallery and Platform Theatre News

### **Artists in Residence**

This month we welcome Helen Amyes as Artist in Residence for June. Her studio and home is in the historic Blandstown district of York. Helen's creative work can be viewed at <http://www.helenamyas.co.cc/> Currently Helen is working on the theme "Spirit of Place" and would love to meet all local artists for an informal open creative time at the Station where she will take on the role of mentor/facilitator. Helen's happy to accept donations rather than a set fee.

### **Workshop/Get together**

Dates: Saturday 11th and Saturday 18th of June for "artistic get together at the Station".

Time: 9.30 start.

Bring own lunch. Tea & coffee supplied.

Materials: Bring along whatever materials you enjoy working with plus paper, scissors, glue stick, visual diaries if used & any collage materials.

Helen will also be exhibiting her works while she is at the Station, so do call in and see them during opening hours (Thursdays through to Sundays from 11am - 3pm).

### **Artists in Residence programme 2011 thus far:**

*June:* Helen Amyes from York

*July:* Marta Salamon from Victoria

*August:* Michael Vandeleur from Safety Bay

Contact Artist in Residence coordinator Marylou Hutchinson on 96471027 / 0427085511 or email; [hutchinson@wn.com.au](mailto:hutchinson@wn.com.au) for any further information of the above.

### **Station Garden**

May 15th marked the anniversary of Ann Rayner's tragic death so on this beautiful Sunday afternoon some of the committee and friends informally came together to plant the heritage white climbing rose 'Mme Alfred Carriere' in Ann's garden and to toast to her memory with a glass of champagne - Ann style! We also filled in the gaps on the front picket fence by planting three more Iceberg roses.

The carriage in the garden will finally receive some attention now that we have a treatment and conservation plan prepared by Philippa Rogers, historian and heritage officer with a particular interest in railway history. With this plan in hand, work can begin on refurbishment of the former brake van into an educational place for memorabilia and photographic displays that will be children friendly. A project manager for this restoration task had to be found and Haydn Rayner, newly co-opted onto the Art Society Committee, has agreed to take it on. Haydn is welcomed with his wealth of knowledge in the field of renovation.

We are very sorry that our hard working member Sally Smith has resigned from the committee. Her cheerful disposition will be missed so much especially at our busy bees.

### **Platform Theatre**

#### ***Future Events***

Planning is under way for the next season commencing in October. If you would like to be included on the emailing list for notification of coming events, email Sandy at [lewandsandy@bigpond.com](mailto:lewandsandy@bigpond.com)

Friends of the Station will be notified one week prior to advertising events. If you wish to become a Friend (\$25.00/year) contact Kathryn on 96464047 / email: [wk.mclean@bigpond.com](mailto:wk.mclean@bigpond.com) or treasurer Pauline Knight on 96461142 / email: [bpateam2@bigpond.com](mailto:bpateam2@bigpond.com)

### **Station Gallery**

Many thanks to the Committee and volunteers of our wonderful community for manning the Gallery lately whilst we haven't had an artist-in-residence. There's always visitors with an interesting tale to tell either art

or train/station related to make for a fascinating few hours. If you would like to be on a roster occasionally to man the gallery please let me or Marylou know.

**Gallery Open Hours**

11.00am - 3.00pm

Thursday, Friday, Saturday and Sunday

Jenny Broun

President, Beverley Arts Society

96461500 / 0419040063

[brounj@westnet.com.au](mailto:brounj@westnet.com.au)



Committee members L-R Sandy, Marlene, Pauline, Jenny, Amanda and Leita toasting to Ann's memory.



Barry and Pauline planting roses at the Station

# **Dawson's Concrete & Reinforcing**

**"Your Local Beverley Concreter"**

- Concrete Formwork & Steel Fixing
- Driveways, Shed floors, Maintenance pits, Silo pads, Super sheds, House pads
- Fully mobile service
- Over 30 Years Experience
- 7 Days A Week
- Professional, Reliable Service

*Phone for a Free Quote*

**SANDY DAWSON**  
**Mobile: 0417 375 221**  
Email: [pameladawson@bigpond.com](mailto:pameladawson@bigpond.com)

## A Guide to Sprout Whole Seeds

By Valerie Gunsch  
Natural Health Practitioner – Women's  
Councillor  
Dipl. VGN. CNC. P.P. Mac. H.

### Sprouts are 'Living Food'

Sprouts are very special. They are living food, comprising essential and balanced nutrients for alive people, as life proceeds from life. Life and health go together.

Good health is so precious, our body is such an exquisite gift that we have to take good care of it all the time. Every person needs to work at maintaining health; therefore, we need to learn all we can about nutrients and how the body functions.

My interest in sprouts has grown over the last years as I have recognised how easy it is to grow them without getting your hands dirty, without digging in the garden and hurting your back, without getting out in hot and cold weather. They are always fresh and full of nutrients and will please your palate in which ever way you like.

Here are the facts:

- They grow in any climate at any time of the year and give you a constant supply of food, in the very freshest form possible.
- They require neither soil nor sunshine.
- They are a good source of essential fatty acids (EFA).
- They are the highest food sources of fibre.

- They provide a good source of high quality protein. Many people use sprouts as an alternative to meat protein, rivalling any meat in nutritive value.

- They are a powerful source of antioxidants in the form of vitamins, minerals and enzymes.

- Sprouts are low in kilojoules (calories), so are good nutrient-dense food for weight watchers.

- They have a low glycemic index (GI) which makes sprouts valuable for health.

- Have not been subjected to chemical sprays while growing.

- Are extremely economical and in preparation has no waste.

- Can be grown indoors within a minimum amount of space.

- Multiply by 400 % or more in 5 days.

- Mature in 3 – 5 days.

- Growing sprouts is fun for the family especially for children.

- They are alkaline and have an alkalising affect in the body. The immune system is made strong by high alkaline and alkalising foods.

- Sprouts are considered whole foods, full of living enzymes, a vital life-force.

- The starch converts to simple sugars.

- The protein provides amino acids.

- The fats break down into essential fatty acids.

The minerals chelate or merge with

protein in a way that increases their function.

All these actions increase the nutrient value, and enhance digestion and assimilation. Due to these dynamic influences, sprouts are considered pre-digested food.

As I became more aware of the value of live food, I started to see, that little things, like sprouts, can have a big impact on health, as they provide a high degree of vitality and rejuvenation to the body.

Sprouts have so many valuable attributes:

- Living sprouts are quality food of high bio-photons (bio meaning 'life'; photon meaning 'electromagnetic'), which provide high bio-energetic value, to energise our body and help the entire organism function, and prevent and repair defects.

- Bio-genic living foods offer the strongest support for the regeneration of cells (25% of our daily food should be living food).

- Bio-active foods are life sustaining organic fruit such as vegetables and freshly picked salad greens and herbs (50% of daily food).

- Sprouts are raw foods containing an abundance of oxygen.

In the next few editions of the Beverley Blarney I will go further into sprouting, which seeds to sprout and recipes.

Resource:

With permission of  
Isabell Shipard "How can I grow and use  
sprouts as living food?"  
[www.herbsarespecial.com.au](http://www.herbsarespecial.com.au)

### ROYAL ANTEDILUVIAN ORDER OF BUFFALOES



GLE (Inc)  
QUAIRADING BEVERLEY NO.163

We meet the first Wednesday of every month at the Masonic Lodge, Hunt Road, Beverley

*The objects of our order are  
Philanthropy and Good Fellowship.*

For more info - contact  
Bill McDonald on 9646 0402

## BRITZA RURAL ENTERPRISES

- ❖ All types of fencing
- ❖ Fencing erection and maintenance
- ❖ Stable modifications and extensions
- ❖ Arena and course design
- ❖ All aspects of rural maintenance

DAVID BRITZA 0409 989 474

## Did you know 'Someone' runs this town?

Yes, there is always that person who is expected and usually does it...Who is it? You all refer to them as 'Someone'.

How often have we said 'Oh, someone will do it,' and leave it at that and it happens?

Meals on Wheels...someone does it, but who are they? Unmentioned volunteers.

Ambulance Service...someone does it, a group of dedicated volunteers who drop what they are doing, whether business or work and go off to render emergency assistance.

Fire and Rescue...someone does it; volunteers who train and risk their lives to fight fires and render assistance at accidents.

Tourist Information Centre... someone is there opening and closing every day, no pay, purely volunteer.

Avondale Farm Project Association...someone is there, travelling at their own expense, dedicating their time to keep a unique historical place running; all voluntary with the satisfaction of keeping our heritage.

The Youth Centre...someone is there every Friday, we know who she is, even though there is some remuneration, it is still much more voluntary with some assistance.

Dead Finish Museum...someone is there to open, clean up and welcome visitors and present our historical items.

The Op Shop...someone is there, collects, displays and sells unwanted items for the benefit of the community. Voluntary given and voluntary administered.

The Men's Shed...an organisation for men who sit around, drink mugs and mugs of tea or coffee, tell yarns and render assistance to the community on projects that may cost Beverley otherwise.

Community Resource Centre...some one is there, there is remuneration, but there is volunteers assisting.

The Hospital Committee, the Football Club, the Bowling Club, the Lions Club, the Golf Club, the

Hockey Club, Tennis Club, Agricultural Society, the Art Gallery Society and many more.

These are Someone's voluntary duties done unselfishly, day in day out, year after year with little thanks, a lot of criticism, in constant demand and not much recognition, but I salute you.

Someone's duties are not listed in priority or importance as they are all important.

Thanks Mate!

P J Gogol

**135th  
BEVERLEY AGRICULTURAL  
SHOW**

**SATURDAY 20 AUGUST  
2011**

**Start thinking about  
those entries...**

**GJ & VJ SEEBER**  
trading as

# BEVERLEY PLUMBING & GAS SERVICES

Established in Beverley since 1997  
Your Local Licensed Plumber and Gas Fitter  
Servicing Beverley & Surrounding Districts

## PLUMBING

- ★ ACCREDITED WATERWISE & ENVIROWEST PLUMBER
- ★ SEPTIC INSTALLATIONS
- ★ SEWERAGE CONVERSIONS
- ★ MAINTENANCE & INSTALLATION of all PLUMBING REQUIREMENTS
- ★ INCLUDING BACKFLOW INSTALLATION and TESTING
- ★ NO JOB TOO SMALL OR TOO BIG
- ★ HOLDS CLASS 'A' PLUMBERS LICENCE

## GAS FITTING

- ★ LICENSED (UNRESTRICTED) GAS FITTER for all ASPECTS of gas
- ★ MAINTENANCE and INSTALLATION
- ★ AUTHORISED SERVICE AGENT for ELECTROLUX

Mob: **0418 929 141**  
Fax: **9647 2109**  
Tel: **9647 2115 (after hours)**  
Email: **krowdrah2@bigpond.com**

Water Auth Lic No. PL216  
Gas Lic No. 386  
Back Flow Lic. 103



## Don't forget!

### ***Make sure you are claiming all possible deductions this tax time***

#### **By AMP Financial Planner Paul Carter**

In the lead up to tax time we often spend time sifting through old receipts to see what expenses we can claim when we should be looking deeper into our accounts and using financial strategies to ensure we are making the most of all possible deductions.

Here are some points to remember in the lead up to June 30:

#### **Everyone**

- Income Protection insurance policy premiums can be claimed as a personal tax deduction because people are insuring an income-producing asset - their ability to work!
- Any donations over \$2 made to legitimate charitable organisations are 100 per cent deductible so don't forget to claim these.
- A 20% tax offset is available for each dollar of a person's net medical expenses that exceed \$1,500. Broadly, net medical expenses are amounts that are above what the person can claim back through Medicare and/or their health insurance company.
- Remember to declare all income and capital gains such as interest received on bank accounts, however small, and the selling of assets such as real estate, shares or managed fund investments.
- People generally do not need to pay tax on an inheritance, but if they have reinvested that money, or are gaining an income from it, tax may apply on this income. Further, Capital Gains Tax (CGT) may apply where assets such as shares or property are sold – however specific CGT exemptions may be available in certain circumstances.

#### **Families**

- People who are eligible for Family Tax Benefit (Part A) may be eligible for an Education Tax Refund to assist with costs of education. Up to 50% of eligible expenses such as home internet connection, personal computer purchases, pens, texts, exercise books etc can be claimed. The maximum refund is 50% of:
  - \$794, for each primary school age child, and
  - \$1,588 for each secondary school age child.

- Don't forget to make sure all information with Centrelink is up to date. This will ensure you receive any benefit entitlements such as the Child Care Rebate. The Child Care Rebate covers 50% of out of pocket expenses for approved childcare, up to a maximum of \$7,941 per child for the 2010-11 financial year.

#### **Landlords**

- Many of the services which have been paid for in relation to the general maintenance and upkeep of investment properties can be claimed as a tax deduction. This includes expenses such as lawn mowing, pool maintenance and other similar costs which you have outlaid in relation to your investment property.
- Certain types of financial advice and other professional services received in relation to an investment property may also be tax deductible.
- If people have insurance cover on investment properties they may be able to claim this premium as a tax deduction as well.

#### **Self Employed / Sole Traders**

- Self employed people or sole traders can claim 100% of personal superannuation contributions. However, care needs to be taken to ensure that these contributions do not result in that person's contribution cap being breached as this would attract tax penalties.

#### **Small Business**

- In order to be eligible for a tax deduction during the current financial year, make sure that all superannuation payments have been paid for your employees on or before 30 June.
- Just as for sole traders and individuals, if businesses have had a good year and have some spare funds available, rather than keep it in a bank account, businesses are able to pre-pay certain future expenditure and claim a deduction in this year's tax return.

As tax matters can be quite complicated, it's a good idea to speak to your financial planner to ensure you're paying for the tax you need to but making the most of any deductions or claims you are eligible for.

Paul Carter is an Authorised Representative of AMP Financial Planning Pty Ltd, ABN 89 051 208 327, AFS Licence No. 232706.

Any advice given is general only and has not taken into account your objectives, financial situation or needs. Because of this, before acting on any advice, you should consult a financial planner to consider how appropriate the advice is to your objectives, financial situation and needs.

## Health investment welcomed by Wheatbelt Health MOU Group

The announcement of significant health investment in the Wheatbelt region has been warmly welcomed by members of the Wheatbelt Health MOU Group. Announced in the State budget, and funded by Royalties for Regions, the Southern Inland Health Initiative is a \$565million comprehensive strategy aimed at overhauling health delivery in the State's southern inland regional areas. To be delivered through the WA Country Health Service (WACHS), the Southern Inland Health Initiative outlines investment in both capital and recurrent health initiatives.

"This is an historic announcement and follows significant community engagement undertaken by the Wheatbelt Health MOU Group, which identified priority areas needing investment," said Tracy Meredith, Chair of the Health MOU Steering Group. "It is pleasing to see that the investment is across 6 key areas of service delivery, and addresses those priorities identified by communities."

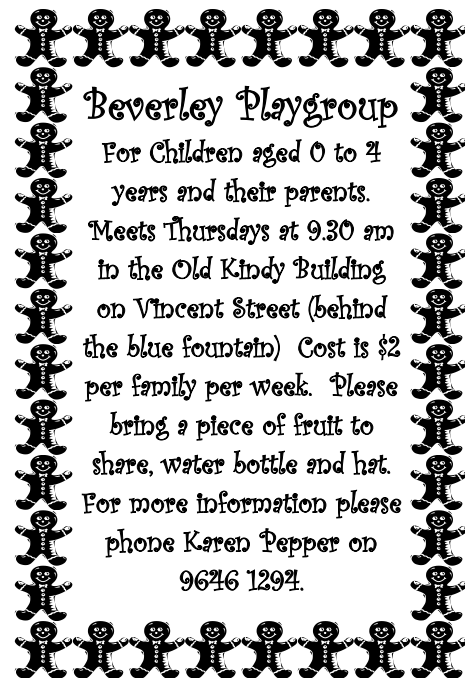
These initiatives encompass:

- \$182.9m Medical Workforce Investment Program
- \$147.4m District Hospital Investment Program
- \$43.4m Primary Health Care Demonstration Program
- \$108.8m Small Hospital and Nursing Post Refurbishment Program
- \$36.5m Telehealth Investment Program
- \$20m Regional Residential Aged and Dementia Care Investment Program

In presenting the package to meetings across the State's south, both the Minister for Health, the Hon. Kim Hames, and the Minister for Regional Development and Lands, the Hon. Brendon Grylls, acknowledged the work of the Wheatbelt Health MOU in contributing to the plan by way of identifying priority health needs of the region.

"As this comprehensive program is implemented, the group looks for-

ward to partnering with WACHS to ensure communities can contribute to innovate solutions to health care in their communities," said Ms Meredith. "Both Ministers have reiterated their commitment to seeing swift and sweeping changes, but acknowledge that this can only occur as quickly as communities can be consulted about what they want their health services to look like. Both Ministers have acknowledged that this is a once in a lifetime opportunity to redesign health services to better meet those community needs, reiterating the need for each community to ask 'What is the best spend of the Health dollar in our community?'"



**Beverley Playgroup**  
 For Children aged 0 to 4 years and their parents.  
 Meets Thursdays at 9.30 am in the Old Kindy Building on Vincent Street (behind the blue fountain) Cost is \$2 per family per week. Please bring a piece of fruit to share, water bottle and hat.  
 For more information please phone Karen Pepper on 9646 1294.



## Remote Area CONTRACTING SERVICES

- Water Supply
- Windmills & Accessories
- Solar Pumps:
- Sales, Service, Installation
- Fencing & Yards
- Trenching & Polypipe Laying

Agents for:  
 Mono Pumps, Ebara Pumps and Pressure Systems

**Remote Area Contracting Services Pty Ltd**  
 PO Box 638, York WA 6302  
 Tel: 9643 1047 Fax: 9643 1039

**Errol Squire**  
 0438 682 687

**Dalene Davies**  
 0427 021 146

## WOOL BUYING



**ROB THORN**

**0438 364 920**

TOP PRICES PAID

FARM PICK-UP

PROMPT PAYMENT

CLIP PURCHASES FORWARD ON SPOT

CLIP HANDLING - SELLING

MEMBER OF PRIVATE TREATY WOOL MERCHANTS

# Hi Dolly

A short story  
By John Grimshaw

Carabooda  
Perth WA  
1986

## To Dolly

Midlife crisis, male menopause, call it what you will. Life was drifting along, with the trauma of broken marriage after nearly 30 years, getting used to living alone, no self esteem and 'escaping' to an isolated avocado orchard on 10 hectares as caretaker/tenant.

Whilst driving to the shops I was abused by a young female in a battered Holden with kids coming out of the glove box, who tore by me only to immediately turn left into a child care centre. 'Christ Almighty!' I had started detesting the female gender as it seems the decline in 'real ladies' has been rapid.

I had planted rose bushes around the front of the house and had plenty of room to have my hobby of 'old cars' to pursue and gradually accepted things as they were, with my music and books to enjoy. A haven from the crazed drivers of Perth who, ignored the signs where I would be working — was even abused for a 10 second delay!.

My rose bushes were thriving but a mystery came to light — where were all my 'buds' going? Frantic spraying for giant aphids, ants, caterpillars etc only caused the bushes to go on strike. I had no idea what the cause was 'but' something magic was in the air! No clue to what would happen to me or the 'real world' that is there for everyone, somewhere, sometime, and it started by such a mundane job as hanging out my washing. It changed my life. Whilst finishing hanging the washing out and bending to pick up the basket I had a very pleasant surprise. A tiny 'Joey' was looking up at me, no fear, just gave me the impression that it was inquisitive. I slowly sat down near to the lovely little creature. It just looked and hopped away. I put food out the next day and it was eaten. I walked to the clothes line a couple of days later with food, and it

was there. It seemed to me that she wanted someone as much as I did, and from that timeless moment, she took me for what I was and not what I was supposed to be. I did not want this moment in time to end and just sat down next to her, oblivious to the ants having a banquet on my anatomy! Eventually she had finished her tucker and I wanted desperately to just touch her. I slowly put out my hand and, to my utter delight, this delightful little lady rubbed her head on my fingers, looked up and hopped into the bush.

As I watched her disappear into the bush I had a quiet thought... the little devil captivated you, let you near but yet, so far, and then nicks off! 'Gotta be a female' I thought, with a rueful smile! 'That's the last you will see of that femme fatale!'

I still left food out before going about my work and I had already decided I would call her 'Dolly', one of my nicknames for my wife. So I started to call out whenever I placed food out. The food was being eaten so I knew she was still around.

One evening I realised I had not put Dolly's food out, so for the first time it was late in the day. Calling out her name, I started putting it on the ground and she suddenly came bounding up to me literally shaking all over in excitement and making sounds that seemed to me as if she was glad to see ME! 'Unbelievable.'

Before she even started to eat, she greeted me! From that moment on, Dolly transformed my humdrum existence to one of sheer pleasure and delight in her presence. As time went by, whenever I came home, all I had to do was call her. One day I saw her a long way down the paddock and simply called her. Up she stood and saw me and, to my delight, she bounded as fast as she could all the way up shaking with pleasure and excitement to see me. We were getting really close. Her food was put outside the front door and if I was home all day she would lie next to my chair and throw sand over herself and doze off as if it's the most natural thing in the world.

She had brought some meaning to my life and wherever I walked, or worked on my old cars, she was with me. She would hop around like an

inquisitive child and came up with something new every day. She had now got into the habit of waking me at six every morning. She had food and water, so as a female she would not be ignored.

She loved to come into the house, her tail caused some problems of course and nothing pleased her more than looking out of the kitchen window, standing up as tall as she could for the world, as if to say 'So this is where you watch me, is it?'

I did have problems trying to get her out of course once it was her place, so I opened all the doors and went outside. Once she realised I wasn't there, she came looking!'

It did become a bit of a problem to go to work or leave her at all! The driveway to the road was at least a half a mile long and it got to be a crafty game between us as I got in my car. By this time she was used to it, she would follow the car all the way to the road. This meant that I had to walk back all the way to the house with her, she being really pleased, and then of course, a game of 'put some food around the back and run like hell', only to be over taken by her before I got one hundred yards away.

'How can I leave her then?' It reminded me of hiding my coat so that I could sneak out to work without upsetting my children, and that started me thinking of my magical times with children that hated me leaving too! Until then it hadn't dawned on me that I was getting better and I was being treated to something that was 'precious and given freely with no demands or ulterior motives'. Just an over worked phrase that's bandied about without real meaning. I was getting total love and affection from a free and wild animal. That made me feel as tall as a tree, the same feeling I received from my children crowding in our bed at six on a Sunday morning or just wanting me around.

So for the first time in years I realised that my life had something left, and this lady fussing over me, diving in my pocket for peanuts and gently nuzzling me, made me as happy in her company as she was in mine. The realisation she could hop



away whenever she pleased, but chose to be with me, not even of her kind, never failed to amaze me.

So it seemed like a good idea to go and see my family again and bring them and my grandchildren to see where I was living, and to make an effort to see them more often. They were making their own way and had their own lives and problems, so obviously, the change in me was hard to believe and they suspected another woman in my life. I did tell them I had a female in my life and I wanted them to meet her. They were rather upset at this but, bless them, they made the trip at various times and DOLLY was introduced.

She was so timid to see other people she kept her distance until they were inside the house, then she would rush up and make sure things were ok. Gradually one at a time they came out, with the children containing their eagerness and our DOLLY was a total hit, even arms around her neck didn't alarm her. She gently moved away and accepted it all like the lady she is.

My daughter Debbie, apple of my eye, next broke the ice and brought mum with her, hoping it would bring the family together. It was too soon for mum as she had organised her life very well and liked her independence, so it needed time. I wasn't afraid of time anyway and the future seemed a lot brighter than a mere nine months ago and another member had arrived to help me try and reunite the family once again.

DOLLY was with me for some time and was fully grown and gentle as ever, till one day she was found in our small world by a male roo and his travelling troupe of concubines, and she fell for his charms and leapt over the fence to the countless miles of bush beyond. It was inevitable I suppose, but it tore my world apart for a while, until I realised she had given me so much, without asking for walks or in fact, making no demands of me whatsoever except to spend time with her. And I can assure anyone, anywhere, it was a privilege.

Jonathon  
PERTH

**For all your air conditioning needs contact:-**

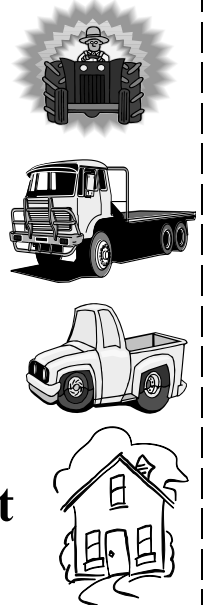
**Robert & Nathan Chamberlain**

**Avon Auto Air**

**Phone: 08 9647 2070**

**Mobile: 0428 472070**

We are now accredited and registered to install and commission **Split System Air conditioners.**



### BEVERLEY LIONS CLUB

On June 11<sup>th</sup>, Beverley Lions will have the Lions Skin Cancer Screening Van in Beverley. This is a free service and is manned by top skin cancer specialists. The van will be parked in Jutland Parade (between the Lesser Hall and the Men's Shed) and appointments are between 9am and 3pm. If you wish to have an appointment, please contact Marion Alexander (Lions President) on 9641 6051 between the hours of 7am and 8pm. If the phone is not answered, please leave your name and number on the answering machine. Chances are I'm outside and don't hear the phone or those 3 pesky telephones are hiding from me again and I don't find them in time!! I will certainly get back to you as soon as I can.

We will be having our Changeover Night on the 30<sup>th</sup> of June. 2011 is a special year as it is the start of our 25<sup>th</sup> Anniversary Year. We are hoping to invite as many foundation members as we can. Should be a great night!

Recent catering activities included catering at the Tractor Pull and the Clearing Sale. Both events were well supported by the public and we thank you.

Over the next few weeks, the Beverley Lions Club will be distributing new telephone books to the towns of Beverley, Brookton and York. A mammoth task that will wear out our walking shoes and help with our fitness levels!

Marion Alexander  
Lion President

**Congratulations to Garry Miller and Bruce Mann, both past players and trainers of the Beverley Football Club who were awarded Life Memberships recently.**



## Remember the Good as well as the Bad

### View from the Shed

One of the things that affect our mental health more than any other is our sense of stability about things that are the pillars of our life. When things are not going as well as expected for example the fear of the unknown about the weather (which farmers always have to deal with), commodity prices, and the strength of the Australian dollar over the last year, it is easy to think the world is against us.

One of the other things that always

give us a few nervous moments or adds to our insecurity at this time of the year is the government budget. I myself personally, have been worried that some of the programs that support rural people may be cut or downsized.

While we all have a wish list of things the Government could do to support people through difficult times we also know that we work in a free enterprise system. This system depends on viability and profits which are well beyond the role of Government to underwrite.

I think we can however acknowledge the Government for what we know will continue into the foreseeable future, and that is support for farm-

ers and rural businesses to restructure. These include:

- An expansion of the drought pilot program to cover a much greater area of the State with double the number of businesses able to access training.
- A significant benefit is the access to family support benefits that would not be available under normal circumstances.
- The WA Government's ability to enter the Exceptional Circumstances funding if this year is a bad one and the other States haven't come on board with the EC reform agenda by April 2012.
- Continuation of funding for the Rural Financial Counselling Service for another four years.
- Funding to investigate multi-peril crop insurance.

While things are difficult at this time we need to appreciate that these Government programs do support our ability to deal with difficult circumstances and improve our overall sense of security which impacts on our overall wellbeing.

Everyone is looking for a good season but remember we are all in this together and solutions will be found for some of the vexing problems being experienced. The main thing is to stay positive and keep smiling.

Regards

Julian  
Executive Officer



# Beverley Earthmoving Contractors

40 years experience in all aspects of Earthmoving.

## One stop shop for all your Septic Systems.

Supply & Install

Plumbing Licence PL 5829 Gas Fitting Licence GF 7422

### ALL ASPECTS OF EARTHMOVING

House Pads

Site Cuts

Block Clearing

Laser Levelling

Service Trenches

To Shire and engineer specifications.

### SAND SUPPLIES

Metal

Gravel

Garden Mix

### BULK HAULAGE

Truck and Dog Trailer

Backhoe 315 SE John Deere

Side Shift

Extender Hoe

Bob Cat

Loader

Forklift

Post Hole Borer

General Freight ingage and over width loads credited.

### Phone:

**Ron 9646 0318**

**0429 088 689 or 0488 087 316**

**ChemDry®**  
*Drier. Cleaner. Healthier.™*  
**Betta Finish**



Superior carpet  
& upholstery  
cleaning

**Freecall 1800 017087**

[bettafinish@wn.com.au](mailto:bettafinish@wn.com.au)

Fax 08 96225473

[www.beverleywa.com](http://www.beverleywa.com)

## **BEVERLEY CHILD HEALTH CLINIC**

Clinic appointments can be made by ringing the hospital on 9646 3200.

The clinic is open on Mondays for appointments and immunisations from 9 am to 4 pm.

Susie Ridderhof—Relieving Child Health Nurse.

## **BEVERLEY HOSPITAL AUXILIARY OP SHOP**

Donated, clean clothing is very much appreciated. No electrical appliances, underwear or bathers accepted. Donated items may be left at Avon Trading please.

The Op Shop is open every Friday between 2:00pm and 4:00pm.

### **OP SHOP ROSTER FOR June 2011**

Fri 03 Dawn Edwards, Beth Hutchinson, Maree Hutchinson  
Fri 10 Val Edwards, Joyce Ridgway, Dulcie Fleay  
Fri 17 Amanda McLean, Bronwyn Halliday, Erica Murray  
Fri 24 Betty Cable, Ailsa Elston, Jan Howell

Val Moad  
Hon. Secretary



## **Meals on Wheels Roster June 2011**

Jun 01 D Strange/E Boyle  
Jun 02 G Roache/J Howell  
Jun 03 H & M Anderson

Jun 06 J Islip/T Valli  
Jun 07 R McCallum/M Hobbs  
Jun 08 S Eramiha/S McEwan(ND)  
Jun 09 D & E White  
Jun 10 J Brown(ND)/B Wauchope

Jun 13 B Foster/P Smith  
Jun 14 B & C Cable  
Jun 15 D Sampson  
Jun 16 D Kilpatrick(ND)/A Elston  
Jun 17 C & G Alabach

Jun 20 A & K Boyle  
Jun 21 M Blechynden/J Ridgway  
Jun 22 D Strange/E Boyle  
Jun 23 H & M Anderson  
Jun 24 C Moulton/S Smith

Jun 27 J Verdel/J Howell  
Jun 28 R McCallum/M Hobbs  
Jun 29 S Eramiha/S McEwan(ND)  
Jun 30 D & E White

## **UHF CB REPAIRS**

**TV Antenna Digital Upgrades /reception problem solving.**

Qualified communications technician.

Reasonable labour charges.

Onsite service.

Repairs and installation to some car audio, car security, mobile phone handsfree.

Reversing camera systems for automotive and machinery.

Based locally in Beverley

**ALAN PRIMROSE**

**0408 002 965**

## **COMBINED PEST CONTROL WA P/L**

Owner Operator—Ross Leo



*Spider, fly, mosquito & cockroach service*

- \* \$198 Spider, fly, mosquito & cockroach service exterior only
- \* \$264 Spider, fly, mosquito & cockroach service interior & exterior
- \* \$11 Roof space treatment \*\*Per roof space with any service\*\*

*Termites*

- \* \$198 Annual termite inspection
- \* \$220 New or non annual termite inspection
- \* \$231 Pre-purchase timber pest inspection

We also provide pest control for rodents, ants, silverfish, rabbits, domestic weeds, fire breaks and bird control etc

We treat pests all year round

Contact Ross or Bianca Phone : **0438 375 146**

E-Mail : [office@combinedpc.com.au](mailto:office@combinedpc.com.au)  
WEB : [www.combinedpc.com.au](http://www.combinedpc.com.au)

All prices are for domestic sites with standard size buildings for 2010-11.  
All prices include GST

## **Countryside Memorials**

Cast Stone

Granite

Marble

Plaques

Added Inscriptions

All Repairs and Restorations



**25 YEARS PROFESSIONAL EXPERIENCE**

**FREE DESIGN AND QUOTE**

**Servicing All W.A. Country Areas**

**9622 5544**

**OXTER SERVICES**

[www.oxter.com.au](http://www.oxter.com.au)

[oxter@westnet.com.au](mailto:oxter@westnet.com.au)



## **AVONDALE DISCOVERY FARM OPEN JUNE LONG WEEKEND**

4-6 JUNE  
10am to 4pm

### **RECENT STORM DAMAGE**

The short sharp storm which passed through a narrow strip of Beverley in May included the hills around Avondale and resulted in the farm receiving 28.6mm rain in about 10 minutes. The build up of run-off water from the steeper areas took a lot of loose debris from the soil surface and caused considerable damage to fences, culverts, roads and erosion around Avondale.

### **AVONDALE MASTER PLAN**

The public feedback and comment phase has been undertaken and the Master Plan document is now finalised. This document has pulled together the various Avondale stakeholders and provided some structure for the future development and operations at Avondale. It has been a huge commitment and we acknowledge the efforts of the steering committee and National Trust. Thank you to Bruce Mann, Kelly Piper, Dee Ridgway, Lew Shaw, Cliff Collard, Mitch Henry, Peter Jenkin and Dina Barrett-Lennard. A special thank you mention to Phil Palmer, (National Trust) who has dedicated a lot of his time to the Masterplan project. Acquittal with the Wheatbelt Development Commission is due mid July.

### **ORAL HISTORIES PILOT PROJECT**

Kate Gregory, National Trust, and Julia Wallis, Oral Histories WA, have been busy gathering names of potential interviewees and people to be interviewed. The response has been very good and the training workshop will be held at Avondale on Saturday 11 June. If you are interested in becoming an interviewer or passing on your knowledge by being interviewed, please contact Dina Barrett-Lennard 96461004 or [dina.barrett-lennard@ntwa.com.au](mailto:dina.barrett-lennard@ntwa.com.au).

### **GROUP VISITS**

Avondale has had three group visits over the last month. Two required catering which has been very professionally undertaken by Glenda Ferris-Robinson. Big thanks to Glenda!

### **VERMIN PROOF FENCE**

The perimeter fence around the Avondale Reserve is now completed. Thank you to the Beverley Football Club for the fantastic effort in what was a very big task!

### **SIGNIFICANCE ASSESSMENT REPORT**

Cathy Day has completed the significance assessment report for the Avondale Collections, and has sent the report in for final editing.

### **BEVERLEY SCHOOLHOUSE QUILTERS**

It has been most enjoyable having the Beverley Schoolhouse Quilters as a regular group to Avondale on Tuesday and Thursdays and the occasional workshop on a Saturday. Everyone will look forward to having the group present at the upcoming Beverley Clydesdale & Vintage Day at Avondale.

### **AVONDALE EVENTS COMMITTEE**

The Avondale Events Committee has been busy working on the three main events this year, to make them bigger and better than ever – Beverley Clydesdale and Ploughing Day, Beverley Truck Muster and Beverley Harvest Festival.

### **Clydesdale & Vintage Day with Great Southern Working Sheepdog Finals**

Make sure you come along to the Beverley Clydesdale & Vintage Day at Avondale on Sunday 19th June 11am to 3pm. This is a day of nostalgia. Clydesdale horses and vintage tractors are in the field with tillage implements of the past. See the earth being turned by a mouldboard or disc plough being pulled by Clydesdales, or a vintage tractor. Interact with the Clydesdales and their handlers. Talk with the 'old-timers' about farming in times gone by.

You will also have the chance to see the Great Southern Working Sheepdog finalists in action.



Entry is Adults \$10, Concession & Child (5 – 16 years) \$5, under 5 years old free and a family is \$25. For more information, please contact Dina Barrett-Lennard 96461004 or [dina.barrett-lennard@ntwa.com.au](mailto:dina.barrett-lennard@ntwa.com.au).

### **SECRETARY POSITION AVAILABLE**

The Avondale Farm Project Association position of Secretary is now open. If you have good computer skills and prepared to volunteer your time we would be delighted to hear from you. Requirements of this role include taking and distributing the minutes from one evening meeting a month, a small amount of correspondence and maintaining the membership database.

If you are interested please contact Bruce Mann 9648 1027 or Sue Eramiha 9646 0087.

## **--YORK GLAZING SERVICE--**

- ALL GLASS REPLACEMENT
- SHOWER SCREENS & MIRRORS
- TABLETOPS & SHELVES
- ALUMINIUM WINDOWS & DOORS SUPPLIED & FITTED

**INSURANCE WORK \* FREE QUOTES**  
*7 DAY SERVICE TO YORK & SURROUNDING AREAS  
FOR QUALITY WORK*

**PH IAN: 0415 402 211 OR PH/FAX 9641 2504**

## **BROOKTON PLUMBING**

ABN: 37 675 595 336

**FOR ALL YOUR  
PLUMBING MAINTENANCE  
AND GAS FITTING NEEDS**

**\*PLUS SEPTIC WASTE  
REMOVAL**

**PHONE:  
SEAN 0413 480 543 or  
NATASHA 0422 013 889**

**PL: 7130 GF: 006947 SWR: T235**

**Beverley Anglican Community**  
**Times for Sunday services for JUNE 2011**

DAY	DATE	CHURCH LOCATION	Time		SERVICE
			AM	PM	
Saturday	4 June	St Mary's, Beverley		5.30pm	Holy Communion
Sunday	12 June	St Paul's Beverley	10.45am		Holy Communion
Sunday	12 June	St John's in the Dale	11.00am		Prayer, Praise and Proclamation
Sunday	19 June	St Mary's Beverley	10.30am		Holy Communion
Sunday	26 June	St Mary's Beverley	8.30am		Holy Communion



**CATHOLIC CHURCH**

Service in Beverley  
 8:00 am every Sunday at  
 Beverley Sacred Heart Church

**THE RELIGIOUS SOCIETY OF FRIENDS (QUAKERS)**

Beverley Friends Meeting - Old  
 Catholic School Rooms  
 Dempster Street

**Sunday 10:30am** - Meeting for  
 Worship

For more information & enquiries  
 phone 9646 0575.

The telephone numbers for the Rev'd John Poole is **9646 1112**  
 All Parish correspondence to: **Secretary, PO Box 292 Beverley.**  
 Correspondence to Rev'd John Poole to: **64 John Street Beverley**  
 All mail for St Mary's Society please address to: **54 Smith Street, Beverley**



**CHURCH OF CHRIST**

The Church of Christ meets for services at the C.W.A. Hall every Sunday at 10:30am.

Enquiries to Sylvia Seddon  
 Secretary 9646 1072.



**PRIMARY HEALTH SERVICES**  
**available to the community of Beverley**

You can refer yourself or your child to the following health professionals:

- **Child / School Health** – phone 9646 1210
- **Dietetics** – phone 9690 1320
- **Occupational Therapy** – phone 0429 466 224
- **Physiotherapy** – a **Doctors referral is required** – please send to PO Box 142, Beverley
- **Podiatry** – a **Doctors referral is required** – please send to PO Box 142, Beverley
- **Social Work** – phone 9690 1320
- **Speech Pathology** – phone 9646 0217

These services are provided by WA Country Health Service and are free of charge.

Services are provided at the Primary Health Building, on the corner of John and Forrest Streets, Beverley. There may be a waiting time for services.

If you have any concerns about your own health or your child's health and development, please phone the relevant health professional to discuss your concerns. Alternatively, you can speak to the Child Health or School Health Nurse, or your GP, to discuss your concerns and to determine the most appropriate referral.

Avon & Central Primary Health – Promoting Healthy Lifestyles



# BEVERLEY REDBACKS HOCKEY CLUB

2011 Hockey season is on again and the Beverley Redbacks Hockey Club is back on the field sporting a couple of oldies, a couple of newbies and a couple of future hockey stars in the oven.

This year we've got a new coach - John Maxwell from the Top Pub. John played the game they play in heaven many moons ago and was famed as a fullback who always took the hit on the short corner. It's brilliant to have him on board!

With our new players rearing to go we hit out at Jennacubbine in our first game and brought home a fighting score of 11-0 (nil to Beverley by the way - lest you be thinking we spiked their drinks). It was a baptism by fire for our newbies but we're pleased to say that they all came back for seconds the following week in York where we went down 2-0 to York 1. A much better game played under lights on a fast and hard York pitch.

As this goes to print we will have played the York 2 in York so stay tuned for full updates and fixtures in the July Blarney. Training is on Thursday night and we're working hard. If you think you'd like to give hockey a go or you played a while ago or you're an ex state hockey champion or even an ex Olympic Hockey Gold medallist - we don't care about your background, we'll take anyone who'll pick up a stick and have a go. Give Kelly Piper a call (contacts below).

## Our 2011 fixtures are as follows:

May 7<sup>th</sup> **Jenna (11)** v Beverley (O) at Northam

Best Players:

Trevor & Mandy Mclean Award: Fi Bowden

Beverley Electrical Service Award: Katherine McLean & Carly Veitch

May 13<sup>th</sup> **York 1 (2)** v Beverley (O)

Best Players:

Trevor & Mandy Mclean Award: Sam Fricker

Beverley Electrical Award: Chantelle Meade

All other games in July, August and September are yet to be fixtured as this goes to print. Thanks again to our generous sponsors:

Blechy's Tyres & Batteries, Inkosi Design, Beverley Pharmacy, Avon Trading, Beverley Electrical Services, Beverley Hotel, Northam Tavern, Beverley Farm Services, Trevor & Mandy McLean, Terraneil, Beverley Freemason's Tavern, Beverley IGA and Farm Direct Stockfeed Supplies.

## EVERYONE WELCOME - NEW AND EXPERIENCED PLAYERS

Kelly Piper

Mobile - 0408952790 Email - [kelly.piper@cbh.com.au](mailto:kelly.piper@cbh.com.au)

---

## BEVERLEY CLAY TARGET CLUB

At the May shoot, a 50 double barrel handicap, the winner was Eddie Powel. Runner up was a tie between Geoff Bremner and Peter Mally. After the shoot was a novelty Annie Oakley, won by Kevin Lupton.



Our next shoot is on 12 June at 1.30 pm. It is a 50 double barrel points.

Come along and have a go.

## *Beverley Men's Golf News*

Once again hot weather greeted 10 players on Saturday 23<sup>rd</sup> April who were competing in a 2 Person Ambrose sponsored by **Darryl Sims**.

This was a very close contest. The winners of the day was Les Annison and John Islip with a nett score of 69.00, from Terry Winfield and Scott McLean with 69.25 and in third place the team of Mel Vivian and Chris Pepper with a nett 71.50.

Novelties winners were

Best Second on 1            John Donovan  
Nearest to the Pin on 5   Paul Broun  
Nearest to the Pin on 13   Terry Winfield  
Longest Putt on 16         Scott McLean

Thanks are extended to **Darryl Sims** for his continued support of the club.

Monday 25<sup>th</sup> April saw a field of 13 participate for the prestigious **Diggers Cup** which is proudly sponsored by **Lew Shaw**.

The winner of the **2011 Diggers Cup** was Mark Bickley who scored a very impressive 45 Stableford points, to win by four points from last year's winner in Ron Bickley. Gavin Sazanov also had a good round with 38 points.

Thanks are also extended to **Lew Shaw** for his continued sponsorship, of the **Diggers Cup**.

Saturday 30<sup>th</sup> April was once again warm with the small amount of rain during the week keeping some of the dust down. 12 players played for the inaugural "Gnome" Trophy. The event was a 3 stick competition.

The winner of the day with a very good score of 43 Stableford points was Daniel Gollan. Stephen Gollan was in second place with 39 points. Ron Bickley 37 points and Luke Gollan 36 points also had good rounds.

Mention also goes to John Donovan who had 2 Ferrets on the day.

The Gnome also sponsored a Novelty on each hole, the winners were:

Longest Chip or Putt on 1	Ron Bickley	Longest Chip or Putt on 10	Luke Gollan
Longest Putt on 2	Daniel Gollan	Best 3 <sup>rd</sup> Shot on 11	Tom Brokenbrow
Longest Drive on 3	Stephen Gollan	Best 2 <sup>nd</sup> Shot on 12	Stephen Gollan
Best 2 <sup>nd</sup> Shot on 4	Terry Winfield	Nearest to the Pin on 13	Greg Barrett-Lennard
Nearest to the Pin on 5	Tom Brokenbrow	Best 3 <sup>rd</sup> Shot on 14	Terry Winfield
Longest Chip or Putt on 6	John Donovan	Longest Putt on 15	Tom Brokenbrow
Longest Putt on 7	John Donovan	Longest Chip or Putt on 16	John Donovan
Nearest to the Pin on 8	Ron Bickley	Shortest Drive on 17	John Starling
Longest Drive on 9	Tom Brokenbrow	Nearest to the Pin on 18	Greg Barrett-Lennard

Thanks are extended to **Ron Bickley** for sponsoring the day.

Saturday 7<sup>th</sup> May saw the **1<sup>st</sup> Qualifying Round** for the Club Championships and also the winner is awarded the **Monthly Mug**. This day is sponsored by **John Donovan**.

It was great to see 13 players take on the course in the first Stroke event of the year. Special mention to Neville Darr who played his first full round of golf at Beverley and acquitted himself well.

At the completion of the day only two players broke their par score being John Islip and Ron Bickley who both shot a nett score of 69. After a countback John Islip was declared the winner of the day, but all was not lost for Ron as both he and John will share the Monthly Mug Award.

The best gross score on the day was Terry Winfield with 83.

Novelties winners were

Longest Putt on 2            Mel Vivian  
Best 2<sup>nd</sup> Shot on 4         Brett Islip



Nearest to the Pin on 5	Terry Winfield
Nearest to the Pin on 8	Ron Bickley
Longest Chip or Putt on 9	John Islip
Longest Chip or Putt on 10	Stephen Gollan
Nearest to the Pin on 13	Brett Islip
Best 3 <sup>rd</sup> Shot on 14	Ben Moulton
Longest Chip or Putt on 16	Kim Moulton
Nearest to the Pin on 18	Stephen Gollan



The club would like to thank **John Donovan** for sponsoring this day.

Fine weather once again greeted 13 players on Saturday 14<sup>th</sup> May for a 3 person Ambrose which was sponsored by **Beverley Hydra Boom**.

At the end of play the scores were very close but the eventual winning team were Mark Bickley, Stephen Gollan and Luke Gollan with a nett score of 57.67. This team was closely followed by the team comprising of Gavin Sazanov, Ron Bickley, John Donovan and Scott McLean with nett 58.50 and in third place was Terry Winfield, John Starling and Mel Vivian with nett 62.17.

The team with the Best Gross score was Mark Bickley, Stephen Gollan and Luke Gollan with a gross score of 71.

Novelties winners were			
Best Second Shot on 1	Mark Bickley	Best Second Shot on 10	Les Annison
Longest Chip or Putt on 2	Scott McLean	Best Third Shot on 11	Mark Bickley
Long Drive on 3	Terry Winfield	Longest Chip or Putt on 12	John Donovan
Longest Putt on 4	Luke Gollan	Nearest to the Pin on 13	Luke Gollan
Nearest to the Pin on 5	Gavin Sazanov	Longest Chip or Putt on 14	John Starling
Best Second Shot on 6	Stephen Gollan	Best Second Shot on 15	Mark Bickley
Longest Putt on 7	Terry Winfield	Longest Putt on 16	Mark Bickley
Nearest to the Pin on 8	Stephen Gollan	Longest Putt on 17	Les Annison
Best Third Shot on 9	Luke Gollan	Nearest to the Pin on 18	Terry Winfield

Once again the club would like to thank **Eddie Peart** of **Beverley Hydra Boom** for his continue support of the club.

Wintry weather finally reached the golf club this week which made the course a little softer due to the rain which was pleasant to those who played. 8 played on Saturday 21<sup>st</sup> May for the **Belhus Trophy**.

It was a Stableford 4 Ball Better Ball event. Once again it was a very close event which saw the team of John Islip and Les Annison win on a countback from the father and son combination of Ron and Mark Bickley. Both shot 46 points.

Novelties winners this week were

Nearest to the Pin on 5	Mark Bickley
Longest Chip or Putt on 16	John Islip

Thanks are extended to **Greg Barrett-Lennard** for sponsoring the day.

June Golfing Fixtures;

Saturday 4 <sup>th</sup>	Wayne Smith Trophy 2 <sup>nd</sup> Qualifying Round. Monthly Mug	Stroke
Saturday 11 <sup>th</sup>	Always Green Trophy	Stableford
Sunday 12 <sup>th</sup>	DRGA Event – Waroona Open Day	
Saturday 18 <sup>th</sup>	GL Broun Trophy 27 Holes. 10am Start	Stableford
Saturday 25 <sup>th</sup>	Fred Sing Trophy 3 <sup>rd</sup> Qualifying Round.	Stroke
Sunday 26 <sup>th</sup>	DRGA Championships - Mundaring	

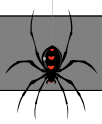
***Country Line  
Dancing***

***Beverley Town  
Hall***

***Thursdays 9.30am  
to 12.00pm***

***Enjoyable  
exercise!***

***Enquires: Jan  
9646 4041 or Jill  
9646 0283***



The Beverley Football Club continue to impress in the early stages of season 2011, with the League boys standing at four wins and one loss, and the Reserves are also playing good footy with three wins and two losses.

On Friday the 6<sup>th</sup> of May we hosted our ever popular “**Annual Fish Night**”, which is now into its 20<sup>th</sup> year, thanks to the continued generosity of Bob Kempton and his crew of helpers. The same night we presented Life Membership to Bruce (Bluebeard) Mann and Garry (Brutus) Miller for the significant contribution they have both made to our Club for so many years. Following the fish night, on Sunday the 8<sup>th</sup> of May (Mothers day) we hosted Railways for our first home game of the season and League Coach Dean McDonald rose aloft the AFA 2010 League premiership pennant, much to the delight of our loyal supporters.

We can't promise the social-scene off the field will be at its usual cranking self in June, with the majority of the players busy cropping after the recent drought-breaking rains. One thing we can promise though is that the players will be working harder than ever to maintain their winning form and we hope that you can all continue to support us from the sidelines!!

### Avon Hockey Association Round 1 (7<sup>th</sup> May 2011) – Jennacubbine vs. Beverley at Northam

<b>Jennacubbine</b>	11	<b>Beverley</b>	0
<b>Margin:</b>	11 goals		
<b>Best: Beverley</b>	- Fiona Bowden, Kathryn McLean & Carly Veitch		

### AFA Round 4 (8<sup>th</sup> May 2011) – Beverley vs. Railways at Beverley

<u>LEAGUE</u>	1 <sup>st</sup>	2 <sup>nd</sup>	3 <sup>rd</sup>	4 <sup>th</sup>	Points
<b>Beverley</b>	4.4	10.7	12.11	15.13	103
<b>Railways</b>	2.2	5.3	6.3	7.5	47
<b>Margin:</b>	56 points				

**Goals: Beverley** James Turner 4; Bryan Keay 2; Scott Tomlinson 2.

**Best: Beverley** Kane Bebbington, Chris Clarke, Robbie Wansbrough, Dale Wansbrough, Dean McDonald, Matt Davey, Brock Fleay & Bryan Keay.

<u>RESERVES</u>	1 <sup>st</sup>	2 <sup>nd</sup>	3 <sup>rd</sup>	4 <sup>th</sup>	Points
<b>Beverley</b>	3.2	8.7	10.9	12.11	83
<b>Railways</b>	1.3	1.4	2.8	4.9	33
<b>Margin:</b>	50 points				

**Goals: Beverley** Darrell Hagen 3; Karl Gillespie 3; Tim Kilpatrick 1; Andrew Coxon 1.

**Best: Beverley** Karl Gillespie, Darrell Hagen, Steven Burstall, Andrew Coxon, Jake Fleay & Daniel Lea.

### NETBALL

<b>Railways</b>	58	<b>Beverley</b>	25
<b>Margin:</b>	23 goals		
<b>Best: Beverley</b>	Libby Owens		

### Avon Hockey Association Round 2 (12<sup>th</sup> May 2011) – York 1 vs. Beverley at York

<b>York 1</b>	2	<b>Beverley</b>	0
<b>Margin:</b>	2 goals		
<b>Best: Beverley</b>	Samantha Fricker & Chantelle Meade		

### AFA Round 5 (14<sup>th</sup> May 2011) – Beverley vs. York at Beverley

<u>LEAGUE</u>	1 <sup>st</sup>	2 <sup>nd</sup>	3 <sup>rd</sup>	4 <sup>th</sup>	Points
<b>Beverley</b>	3.0	3.4	6.7	10.12	72
<b>York</b>	1.4	3.6	3.7	7.11	53
<b>Margin:</b>	19 points				

**Goals: Beverley** Scott Tomlinson 3; James Turner 2; Kane Bebbington 2; Kyle McLaughlin 2; Fraser Wittwer 1.

**Best: Beverley** Kane Bebbington, Chris Clarke, Rogan Hutton, Kyle McLaughlin, Dean McDonald, Kris Ingham, Brock Fleay, Justin Mann & Scott Tomlinson.

<u>RESERVES</u>	1 <sup>st</sup>	2 <sup>nd</sup>	3 <sup>rd</sup>	4 <sup>th</sup>	Points
<b>Beverley</b>	4.2	6.5	7.6	8.6	54
<b>York</b>	1.2	2.5	2.5	3.6	24

**Margin:** 30 points

**Goals: Beverley** Darrell Hagen 2; Timothy Radcliffe 2; Richard Gillespie 1; Andrew Coxon 1; Brenton Richardson 1.

**Best: Beverley** Vaughn Neill, Daniel Bailey, Karl Gillespie, Darrell Hagen, Timothy Radcliffe, Andrew Coxon, Jake Fleay, Richard Gillespie & Blake Wansbrough.

### NETBALL

**Beverley** 46                      **York** 34

**Margin:** 12 goals

**Best: Beverley** Sarah Owens, Jacinta Murray & Libby Owens

### **Avon Hockey Association Round 3 (21<sup>st</sup> May 2011) – Beverley (bye)**

### **AFA Round 6 (22<sup>nd</sup> May 2011) – Quairading vs. Beverley at Quairading**

**LEAGUE**                      **1<sup>st</sup>**    **2<sup>nd</sup>**    **3<sup>rd</sup>**    **4<sup>th</sup>**    **Points**

**Quairading**                      3.3    5.7    13.12    17.14    116

**Beverley**                      3.8    9.11    13.12    16.16    112

**Margin:** 4 points

**Goals: Beverley** James Turner 4; Dale Wansbrough 4; Kyle McLaughlin 3.

**Best: Beverley** Kane Bebbington, Matthew McLean, Rogan Hutton, Kyle McLaughlin, Scott Smith, James Turner & Dale Wansbrough.

**RESERVES**                      **1<sup>st</sup>**    **2<sup>nd</sup>**    **3<sup>rd</sup>**    **4<sup>th</sup>**    **Points**

**Quairading**                      1.5    4.8    8.10    13.13    91

**Beverley**                      0.3    1.5    3.4    3.4    22

**Margin:** 69 points

**Goals: Beverley** Brenton Richardson 2; James Owens 1.

**Best: Beverley** Wade Dixon, Brenton Richardson, James Owens, Darrell Hagen, Graeme Lewis, Mark Bowden & Blake Wansbrough.

### NETBALL

**Quairading** 36                      **Beverley** 9

**Margin:** 27 goals

**Best: Beverley** Jacinta Murray

### **Congratulations to:**

- **First League game players for Beverley:** Darrell Hagan.
- **First Reserves game players for Beverley:** Wade Dixon, Vaughn Neill, Brenton Richardson, Thomas Wallace & Timothy Radcliffe.
- Kerri Brindle, who celebrated her 30<sup>th</sup> birthday on Saturday the 7<sup>th</sup> of May;
- Reserves Captain Jarrad Minchin, who played his 50<sup>th</sup> Reserves game against Railways on Sunday the 8<sup>th</sup> of May;
- League Vice-Captain Matthew McLean, who played his 150<sup>th</sup> League game against Railways on Sunday the 8<sup>th</sup> of May;
- Mark Petchell and Justin Mann, who each won a \$50.00 Beverley IGA voucher at our first members' draw on Sunday the 8<sup>th</sup> of May;
- President Steven Minchin and his darling wife Sera, who celebrated their 30<sup>th</sup> wedding anniversary on Monday the 9<sup>th</sup> of May; and
- Rogan Hutton, who won a \$50.00 Beverley IGA voucher at our second members' draw on Saturday the 14<sup>th</sup> of May.

### **Thank you to:**

- The Beverley Lawn Tennis Club, who have kindly offered us their clubhouse for the duration of the football season.

### **Coming up:**

- 8:30pm, Friday 3<sup>rd</sup> June – Beverley Football Club: June committee meeting;
- Saturday 4<sup>th</sup> June – Avon Hockey Association: general bye;
- Saturday 4<sup>th</sup> June – AFA Round 8: Beverley vs. Kellerberrin/Tammin at Beverley;
- Monday 6<sup>th</sup> June – Foundation Day;
- Sunday 12<sup>th</sup> June – AFA Round 9: Cunderdin vs. Beverley at Cunderdin;

- Friday 17<sup>th</sup> – Sunday 19<sup>th</sup> June – Avon Hockey Association: general bye (Country Week Hockey);
- Saturday 18<sup>th</sup> – Sunday 19<sup>th</sup> June – AFA: general bye (Northern Colts Carnival at Wongan Hills);
- Sunday 26<sup>th</sup> June – AFA Round 10: Beverley vs. Railways at Beverley; and
- Sunday 3<sup>rd</sup> July – AFA Round 11: Beverley (bye).

The Beverley Football Club urges all supporters to join as a Member in season 2011! Members are integral to the survival of our Club and your support is greatly valued. The membership fees for season 2011 are:

Football Senior Player (age 22 and over) - \$100.00

Football Senior Player (age 18 – 21) - \$50.00

Football Junior Player (age 17 and under) - \$25.00

Netball Player (age 18 and over) - \$30.00

Social Member - \$30.00

We are very excited to bring you the Beverley Redbacks membership package for 2011!!

#### What are you talking about?

Well, when you pay your membership or subs for 2011 (just \$30.00 for a social member), you will receive a membership card, designed by our very own Rogan Hutton. This card is the key to winning some very cool prizes!!!!

**At each home game (seven in total), we have a \$50.00 Beverley IGA Supermarket and Liquor voucher to give away to one of our financial members, thanks to the Pepper family at Beverley IGA. However, you MUST be present at the draw to be eligible to win the weekly voucher.**

If this isn't enough incentive, then we are also holding an **end-of-year draw** of three prizes, all donated by the respective organisations.

**First prize is a \$200.00 Harvey Norman voucher;**

**Second prize is \$100.00 cash thanks to Hotel Beverley; and**

**Third prize is a \$50.00 Myer voucher.**

Thanks to all these sponsors! SO THERE ARE NO EXCUSES! Get your membership paid now and join the Redbacks' Revolution!!! The quicker you pay the more chance you have of winning the vouchers. It's only \$30.00 as a social member, or your respective playing subs prices, and you can win some awesome prizes. Plus you get to join the best club in the Avon Football Association!

#### **Pay online now**

BSB: 016540 (ANZ Beverley)

A/c Number: 431901492

A/c Name: BEVERLEY FOOTBALL CLUB

### ***The Beverley Football Club needs you!!***

If you're available to help with any of the following match-day duties, please contact a committee member, your assistance is most welcome.

#### ***Match-day duties include:***

Time-keeper attendants;

Interchange attendants;

Goal umpires;

Boundary umpires;

Reserves game umpire;

Reserves game runner; and

Trainers and water attendants.

The Beverley Football Club is once again conducting a "sheep & wool drive" throughout the course of this season, so if you have any stragglers in your flock which you're happy to part company with and, likewise, if you have any fleeces, pieces, bellies, locks or stains you would like to donate, please contact a committee member regarding where to leave your sheep and/or wool deposit.

A reminder to all players, members, sponsors and supporters that you can now view all the latest news and events from the Beverley Redbacks by checking out our website at [www.beverleyfc.com.au](http://www.beverleyfc.com.au)

To keep you informed and up to date on all the latest news and events from the Beverley Football Club, simply register your email address with us at [beverleyfc@bigpond.com](mailto:beverleyfc@bigpond.com) and we'll add you to our mailing list.

***See you at the footy!!!***



## BEVERLEY HORSE AND PONY CLUB

The forecast for showers on the 15<sup>th</sup> May was altered to later in the week so we had a beautiful sunny May day for our rally. We welcomed more new members both with and without ponies. Fortunately some of our members have a spare pony so those that are currently without a pony were still able to join in.

I arrived to see a bevy of floats and cars parked outside and inside the gates. As I drove in I noticed a group surrounding a horse being bandaged from hooves to above knees and hocks and another pony being inspected by interested participants. He had stickers placed all over him denoting his parts. A mounted group was out in the arena making good use of the new jumping wings and freshly painted rails. It was a telling picture of a pony club hard at work doing what they do best: teaching their members how to ride competently and look after their equine friends.

Lunchtime saw members celebrate Jess Hammond's birthday with a delicious choccy cake made by Claire Thomas, which everyone tucked into with great enjoyment.

Congratulations to Jess Treasure, Bianca Pearce and Amy Blechynden who all successfully passed their D certificate at the May rally. They are just the first of several riders who will be examined this year for various certificates.

Jessica Hammond has been training hard with the State Junior Prince Phillip Mounted Games Squad; we wish her all the best for her ongoing training and upcoming selection day. Jess is heading to the State Equestrian Centre in Brigadoon at the end of May as a member of the Avon Zone 85cm Showjumping Team. She will join with other riders from our Zone to represent us at the State Showjumping Championships. Good Luck to Jess and *Razzy* for a successful weekend.

Our Chief Coach Renée has been out and about attending ODE's at Serpentine and Dardanup, coming 5<sup>th</sup> in the C Grade at each event. Her

mare *Prissy* is enjoying the challenges of the Showjumping and Cross Country courses going clear at each event and now working towards B Grade Standard confidently. Some of our coaches attended a Coaching the Coaches school in Northam recently with Jess and Jazmyn Hammond also attending as demo riders. The day was a great success with our coaches returning full of enthusiasm.

Some of our Coaches will be attending a NCAS Coaching school in York during June; this course is a necessary part of achieving their NCAS Qualification. We hope that they find it a very informative day and are able to bring lots back to the club.

Riders will be attending various events in the zone during June with Zone selection days for Dressage and Novelties Championships approaching. The club hopes to have a Senior and Junior team attend the Avon Zone PPMG Preliminary event in Northam on the 12<sup>th</sup> June. The Avon Zone ODE will be at Brookleigh this year on the 19<sup>th</sup> June, hosted by South Midlands PC. This

is a fantastic opportunity for riders of all levels in our zone to ride at such a top class venue.

The Mounted Games Association of WA or MGA as it is more commonly known will be running a pairs and teams event in Beverley on the Pony Club Grounds over the June long weekend. MGA is for riders of all ages so several of our Pony Club coaches and riders will be taking part in the event. It should be great fun for all who take part.

Club coach Marika has us all inspired with her fitness and good health lately. She has spent many months swimming, running and bicycling long distances in preparation for the Busselton ½ Iron Woman. She was very pleased to report that not only did she complete the grueling event but she also had broken her own recorded time. This sport takes a great deal of dedication and we congratulate her on her efforts.

Due to so many things going on in June our next rally will be on Saturday 25<sup>th</sup> June.

Bush Possum



We have a bobcat and backhoe/loader available with an experienced operator for-

- ↳ Sand pads for house/shed/water tanks
- ↳ Site clearings and site cleanups
- ↳ Paving prep work
- ↳ Access tracks

Six wheeler tip truck and trailer also available for all bulk cartage including sand, gravel, blue metal etc. (supply and deliver).

General gardening service also available including lawn mowing, cleanup, and landscape design and construction.

**Ring Dan and Zoe Wilkinson for a competitive quote**  
**Phone- 9648 1006 or Mobile-0417 093 090**  
**Email - dan.zoe@bigpond.com**

## Unique Strokes W.A. Painting & Decorating

Reg. No. 4236

**ROB BAIN**

**QUALIFIED LOCAL TRADESMEN**

For Guaranteed Traditional  
Workmanship & Prompt Free Quotes

**Phone: 089647 2102**

**Mobile: 0418 904 013**



## Ladies Golf News

Wednesday 27 April saw ladies play Stableford for Lyn MacTaggart's trophy. Jane Murray won the day on 35pts in front of Ali Lewis on 34pts. Conditions were still dry and dusty but that has not deterred players.

Glenys Collins' trophy was played for on Wednesday 4 May with a stroke round. Marg Peck was victorious with 68 nett, Lyn MacTaggart coming in runner up with 70 nett. Marg also won the monthly medal and mug.

Week 4 saw players playing a State event 4BBB and for Sera Minchin and Yvonne Hobb's trophies. With a huge 51pts, Gina Adams and Heather McLean won the day, and now play off in a state competition at Wanneroo in September. Good luck, girls.

Cathy Blechynden outshone the field on Wednesday 18 May, winning Marg Peck's trophy after playing Par.

Wednesday 25 May was the Golf Box Challenge and Lorna Barrett-Lennard trophy. The winner was Marg Peck on a countback from Maxine Watts, both on 35pts. The winners of the Golf Box Challenge were Marg Peck, Maxine Watts and Anne Szczecinski.

Thanks to all our sponsors so far this season.

Ladies play Wednesdays at 10.30am. New players welcome.

## BEVERLEY NETBALL CLUB

Well the season has begun, unfortunately Hunters and Spinners didn't start the season with a win but I am sure that once the teams have got used to each other, the wins will be hitting the board.

Results for the first 2 games are:

7<sup>th</sup> May

Pingelly Gold Diggers (54) defeated Beverley Spinners (29)

Pingelly Red Backs (47) defeated Beverley Hunters (14)

13<sup>th</sup> May

Pingelly Blue Lagoons (34) defeated Beverley Hunters (28)

Pingelly Red Backs (27) defeated Beverley Spinners (23)

Next Games are:

Wednesday 1<sup>st</sup> June in Beverley

6:15pm Beverley Hunters v Beverley Spinners

Friday 10<sup>th</sup> June in Brookton

7:00pm Pingelly Pink Ladies v Beverley Hunters

Beverley Spinners Bye

Saturday 18<sup>th</sup> June in Brookton

1:45pm Pingelly Blue Lagoons v Beverley Spinners

Beverley Hunters bye

Friday 24<sup>th</sup> June in Pingelly

7:00pm Brookton Glory v Beverley Spinners

8:30pm Pingelly Gold Diggers v Beverley Hunters

Saturday 2<sup>nd</sup> July in Pingelly

1:45pm Beverley Hunters v Pingelly Green Machines

3:15pm Beverley Spinners v Pingelly Pink Ladies

Keep a look out in July because the Beverley Netball Club is having a Pizza Night on the 29<sup>th</sup> July. More information will be available in the July Blarney.

## Junior Football Fixtures

JUNE	NIPPERS	JUNE	AUSKICK
Thursday 2 <sup>nd</sup>	Training		
Saturday 4 <sup>th</sup>	Beverley v Keller/Tammin	Saturday 4 <sup>th</sup>	LONG WEEKEND
Thursday 9 <sup>th</sup>	Training		
Saturday 11 <sup>th</sup>	-	Saturday 11 <sup>th</sup>	Noel Carson
Sunday 12 <sup>th</sup>	Cunderdin v Beverley		
Saturday 18 <sup>th</sup>	Beverley	Saturday 18 <sup>th</sup>	Tim Kilpatrick
Thursday 23 <sup>rd</sup>	Training		
Saturday 25 <sup>th</sup>	Beverley	Saturday 25 <sup>th</sup>	Bill Cleland
	Plus Beverley Shield in Cunderdin Yr 7 & under		
JULY	NIPPERS	JULY	AUSKICK
Saturday 2 <sup>nd</sup>	Beverley	Saturday 2 <sup>nd</sup>	Dan Wilkinson
Saturday 9 <sup>th</sup>	START SCHOOL HOLIDAYS		
Saturday 16 <sup>th</sup>	MID SCHOOL HOLIDAYS		
Thursday 21 <sup>st</sup>	Training		
Saturday 23 <sup>rd</sup>	Beverley v Quairading	Saturday 23 <sup>rd</sup>	Tim Cooke
Sunday 24 <sup>th</sup>	Ferguson Shield in Quairading Yr 5 & under		
Thursday 28 <sup>th</sup>	Training		
Saturday 30 <sup>th</sup>	Beverley v Cunderdin	Saturday 30 <sup>th</sup>	Glen & Kate Schilling

# Coming Events:

Saturday 30 July  
Beverley Youth Talent Show

Wed 3 to Fri 5 August  
Beverley Ladies Golf host Avon Valley Championships

Sat and Sun 20, 21 August  
Beverley Truck Muster at Avondale

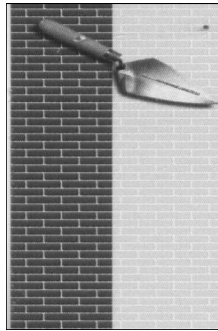
Sat 20 August  
Beverley Agricultural Society Ag Show

Fri 9 to Sun 11 September  
Golf Open Teams Weekend

Sat 17 & Sun 18 September  
State Pony Club Championships at Beverley

Fri 21 October  
St Mary's Anglican Society Rose Show

Sun 20 November  
Avondale Harvest Festival



**D.J. YATES**  
*BRICK & STONEWORK RESTORATION  
AUTHENTIC REPOINTING OF MORTAR  
RISING DAMP RECTIFIED  
PROPERTY MAINTENANCE*  
PHONE DAVE ON 0419041542  
A/H 96412868

## DRUG & ALCOHOL COUNSELLING

The Wheatbelt Community Drug Service Team will be visiting Beverley Hospital every 2nd Thursday.

For appointments please phone Debbie on 96211 055.

The flag was flown at half-mast on the Beverley Town Hall as a mark of respect to:-

- Glenys Domyer

## TRANSPORT

### Daily Service

Beverley to York, Perth and Return



0408 914 435 Home: (08) 9646 1668

**COBB & STACY STANFIELD**

Email: [avonexpress@bigpond.com](mailto:avonexpress@bigpond.com)

**FOR URGENT PICK UPS RING**

**COBB ON MOBILE**

SMALL TO MEDIUM SIZED FREIGHT

## DISCLAIMER

The information in this publication is of a general nature as a service to the ratepayer. The articles included herein are not intended to provide a complete discussion of each subject. While the information is believed to be correct, no responsibility is accepted for its accuracy. No liability is accepted for any statements of opinion or any error or omission.

## BEVERLEY BLARNEY

1100 copies each month

### ADVERTISING RATES

Size A: (~122 x 180mm) \$80.00 GST inc  
Size B: (~122 x 89mm) \$40.00 GST inc  
Size C: (~60 x 89mm) \$24.00 GST inc  
Size D: (5 lines) \$ 8.00 GST inc  
Size E: (3 lines) \$ 5.00 GST inc  
Size F: (122 x 135mm) \$60.00 GST inc

Club notes etc are free of charge

**The deadline for the next Beverley Blarney is 4pm Thursday 23 June 2011**

Shire of Beverley  
PO Box 20, Beverley, 6304

Tel: 9646 1200 or  
Fax: 9646 1409

Email: [blarney@beverley.wa.gov.au](mailto:blarney@beverley.wa.gov.au)

## C & B SOUTHERN RUN TRANSPORT

DELIVERING TO: BEVERLEY, BROOKTON, PINGELLY  
MONDAY, WEDNESDAY AND FRIDAY.

DELIVERY OF GENERAL FREIGHT, AND CHILLER  
GOODS FROM CANNINGVALE MARKETS DEPO.

**PLEASE CONTACT PAUL BALDWIN ON  
0417 953 968 OR AH 08 9646 0461.**

Big enough to do the job, small enough to care.

# What's on in Beverley In June 2011



Mon	Tue	Wed	Thu	Fri	Sat	Sun
		1 HACC  Ladies Golf  Badminton  Ambulance  RAOB  Netball in Beverley	2 Line Dancing  Playgroup  Lions Dinner Meeting	3 Op Shop  Footy Club Committee Meeting  Youth Centre 10-12yr 6-8pm 12+ youth 7-10pm	4 Golf  Footy in Beverley	5
6 Foundation Day Public Holiday	7 HACC  Men's Shed  SOYF 9am  Quilting 10.30am  Stay Active Chair Exercises 10.30am	8 HACC  Ladies Golf  Badminton	9 Line Dancing  Playgroup  Friendly Club	10 Op Shop  CWA Beverley Art Gallery Committee AGM  Youth Centre 10-12yr 6-8pm 12+ youth 7-10pm	11 Golf	12 Clay Target Club
13 WW  Child Health  Historical Society  Garden Society	14 HACC  Men's Shed  SOYF 9am  Quilting 10.30am  Stay Active Chair Exercises 10.30am  Diabetes Group	15 HACC  Ladies Golf  Badminton  Ambulance	16 Line Dancing  Playgroup  Lions Business Meeting	17 Op Shop  Youth Centre 10-12yr 6-8pm 12+ youth 7-10pm	18 Golf	19
20 WW  Child Health	21 HACC  Men's Shed  SOYF 9am  Quilting 10.30am  Stay Active Chair Exercises 10.30am	22 HACC  Ladies Golf  Badminton  Bowel Cancer Awareness Talk	23 Line Dancing  Playgroup  <b>Blarney Deadline</b>	24 Op Shop  RSL Meeting  Youth Centre 10-12yr 6-8pm 12+ youth 7-10pm	25 Golf  BHPC Rally	26 Footy in Beverley
27 WW  Child Health	28 HACC  Men's Shed  SOYF 9am  Quilting 10.30am  Stay Active Chair Exercises 10.30am  Council Meeting	29 HACC  Ladies Golf  Badminton	30 Line Dancing  Playgroup			