



BEVERLEY BLARNEY

Edition 386
December 2016
No Charge

To our readers,
We wish you all a very
Merry Christmas and a safe
and happy New Year.



BEVERLEY STATION ARTS
GALLERY & PLATFORM THEATRE

Beverley Station Arts presents

FREE COUNTRY CHRISTMAS CONCERT SATURDAY 17 DECEMBER

Fun for all the family!

Beverley Platform Theatre
120 Vincent St, Beverley

5.00pm: Gates open

5.30pm: Carols Singalong with
BDHS CHOIR and BEVERLEY
STATION SINGERS

6.15pm: Santa and his helper

6.45pm: Winners of the Shire
Townsite Christmas Lights
Competition Announced

7.00pm Ray Ryder Concert

RAY RYDER
BRINGIN' IT TO THE COUNTRY
2016-2017 TOUR
DEBUT ALBUM OUT NOW



BYO Picnic and Drinks, or food will be available at the venue

Happy hour compliments of **ELDERS** Beverley from 7.00pm

Beverley Station Arts is supported by the Departments of Culture and the Arts and Regional Development, Royalties for Regions and Country Arts WA



SHIRE OF BEVERLEY PRESIDENT REPORT - DECEMBER 2016



Beverley Cornerstone Project

Council endorsed the appointment of ADC Projects for the Design, Documentation and Project Management for the Cornerstone Community Centre Project, which will facilitate the process to prepare for tendering. ADC was the architect and project manager engaged for the Beverley Function and Recreation Centre (completed on time and within budget).

Are you Bush Fire Ready?

The Community Resource Centre (CRC) and Shire of Beverley recently hosted a community information session to provide advice on Bush Fire preparedness, amongst other things. With 18 in attendance, perhaps everyone else considers they are bushfire ready. But are you? In the "Are You Bushfire Ready" resources the following headings may prompt further consideration of that question:- Preparing Your Property, Preparing your Survival Kit, Leaving for a Safer Place, Prepare to Actively Defend, Bushfire Survival Plans. Scenarios need to be considered; saying you are just going to leave may not be as simple as you think because what if you can't? "Are You Bushfire Ready" resources are available from the Shire office, CRC or DFES website: www.dfes.wa.gov.au to help with your planning (which we all hope will not be required unfortunately there have been some devastating bushfires in recent times.)

Draft Branding Strategy

An action from the Beverley Tourism Business Plan and Framework 2016-2020 is to progress creation of a "Beverley Brand" with the view of having one message and logo from which to promote Beverley as a tourist destination. A draft branding strategy is being developed, taking note of comment, feedback and the key messages identified during the Framework consultation process. Members of the Tourism Steering Committee recently met to review and provide comment on the draft strategy which will soon be presented to Council and the community.

Transwa Bus Stop

Relocation of the Transwa bus pick up

and drop off point to the southern entrance of the Tourist Information Bay area has been successfully implemented. The Shire is in the process of arranging lighting for the area.

Old School Roof

What a difference a new roof makes! After many, many years of needing attention the Old School building (current CRC location) has had its iron roof renewed and is looking terrific.

Firebreaks

Are your firebreaks in order? The Shire Ranger has been out and about undertaking firebreak inspections. As part of the Shires' Bushfire Risk Management Planning firebreaks and tracks along the river in the town boundary have been improved and mapped for emergency vehicles. There are plans to burn various section of the river next year prior to fire season.

DFES Emergency Website

A useful website is available from DFES which includes information and community warnings about emergencies, Fire Danger Ratings, and Declared Total Fire Bans. Alerts on the site include fires, flood, storms, earthquakes, cyclones, hazardous material incidents and others.

www.emergency.wa.gov.au

Christmas Lights Competition – Lights up by Monday 12th December 2016

The Shire is again hosting a Christmas light competition for residents and businesses within the town boundary. To be considered for the judging have your lights up by Monday 12th December. Details on page 7 of this Blarney edition.

Youth Development Scholarship

The Shire was successful in obtaining funds through the Department of Local Governments' Country Local Government Fund to provide a Youth Development Scholarship to staff member Taleeya Scott, who will undertake a Certificate in Business Administration specialising in Finance.

Lions Stand Refresh

An initiative of local business has resulted in the Lions Stand on the eastern side of the IGA receiving a

facelift. It looks great and blends so well with other aspects of the main street precinct it's difficult to remember it being any other way. Congratulations and thankyou to the businesses and residents involved. Discussion has commenced regarding ideas to brighten the Federation Square area and improve its useability.

Seniors Morning Tea

The senior's morning tea held on Wednesday 9th November has received many favourable compliments. Familiar faces and new faces joined Councillors for a sumptuous country fare morning tea provided by the CRC and were entertained by the lovely Molly Hare singing and a photographic slide show of community activity in the last year, many of the images being provided by the Beverley Photography Club. Thankyou to Ali and Kathryn at the Shire for the effort put in to create such a great forum for community interaction.

Family Christmas Concert – Saturday 17th December 2016

Don't forget the popular Community and Family Christmas Concert hosted by Beverley Station Arts at the Platform Theatre on Saturday 17th December. Front cover of the Blarney.

December 2016 and February 2017 Council Meetings

The December 2016 monthly Council meeting will be held on the Tuesday 20th December, being the 3rd Tuesday of the month instead of the regular 4th Tuesday. The same will also apply for the first meeting in 2017 which will be held on Tuesday 21st February 2017, enabling Councillor attendance at regional Councillor training, again being hosted by the Shire of Beverley. Council meeting commences at 2pm with Public Question Time.

Safe and Happy Christmas

December has come around again very quickly! Please be patient and take care when out and about on the roads, particularly during the busy harvesting period. On behalf of Council and Staff best wishes for safe, happy Christmas and New Year celebrations.

Dee Ridgway
Shire President



SHIRE OF BEVERLEY IMPORTANT INFORMATION



COMMUNITY GRANTS

Is your group considering a local project for 2017?

Will your project need some extra financial help to achieve real community benefit?

Application packages for Community Grants
will be available from the Shire office from 3rd January 2017.
Start getting your paperwork together now, before the holidays.

Enquiries to the CDO at the Shire of Beverley.



Prohibited Burning Period

Notice is hereby given that the PROHIBITED BURNING PERIOD for the Shire of Beverley begins on
MONDAY 07 NOVEMBER 2016 to TUESDAY 14 FEBRUARY 2017, unless otherwise notified.

NO FIRES ARE ALLOWED



Harvest Bans

The Shire of Beverley would like to update residents on how ABC Local Radio distributes Harvest and Vehicle Movement Ban Information:

There will be designated tune-in time for listeners to hear harvest bans – on weekdays it will be 10.05am, 12.35pm and 2.05pm. On weekends the times will be 12.35pm and 2.05pm.

Please note the ABC does not read out any details relating to the lifting of harvest bans. These will be disseminated via SMS.

Please contact the Community Emergency Services Manager at the Shire Office 9646 1200 for any queries.
For notifications of Harvest Bans call 9646 0145 - Harvest Ban Hotline (Available 24 hours)

FOR ALL FIRE EMERGENCIES PLEASE CALL 000



SHIRE OF BEVERLEY CHRISTMAS - NEW YEAR PERIOD



Please be advised that the Shire Administration Office will be closed from
4:00pm on Friday 23 December 2016
and will reopen at
8:30am on Tuesday 03 January 2017.

Wishing you all a very Merry Christmas and a safe and Happy New Year.

The President, Councillors, CEO and Staff at the Shire of Beverley

Help us spread the message that could save people's lives this bushfire season...

You CANNOT rely on scheme water during a bushfire

Residents living in or near bushland are reminded to not rely on public water supplies if they plan to stay and defend their homes during a bushfire.

If you plan to stay and defend your home you must have an INDEPENDENT water supply and pumping capability. Scheme water may not be available due to damaged infrastructure, extreme demand depleting supply and pressure, or a cut to power which is used to pump water.

**ARE YOU
BUSHFIRE
READY?**

areyouready.wa.gov.au

We have made our own preparations for the 2016-17 bushfire season by readying equipment and systems to cope with extreme conditions. Despite these efforts, it is likely there will be a reduction in water pressure, and scheme water supply tanks may run empty in the event of fire.

For more information about preparing a bushfire survival plan and what you will need to actively defend your home, visit the Department of Fire and Emergency Services website www.emergency.wa.gov.au/prepare

A message from the Department of Water

The Department of Water has advised people in bushfire prone areas with bores and access to surface water that they can take and store water to support bushfire plans.

For more information on how the Department of Water's rules support bushfire preparedness, visit www.water.wa.gov.au/fireplanning

Emergency Numbers	
Fire or life threatening emergencies	000
SES Emergency Assistance	132 500
Emergency Information	13 DFES (13 13 37)

watercorporation.com.au
#15879945

FRESH WATER THINKING WATER CORPORATION



Travelling Overseas or around Australia?
To book a holiday of a lifetime
Contact your local travel professional
Catherine Riches

Tel: (61)8 9647-2173 Email: broker3@bigpond.com
Travel Associates Australia Pty Ltd - Licence Nbr:9TA1188
Member of Travelscene American Express

Save the Date
Thursday 26 January 2017
AUSTRALIA DAY
POOL PARTY
Beverley Swimming Pool
Free Entry on this day.

ARE YOU BUSHFIRE READY?

It's a team effort. Go to emergency.wa.gov.au



The **PROHIBITED FIRE SEASON** is once again upon us! And as we have seen conditions can change daily from seemingly little risk to Catastrophic and Harvest Bans the next, followed by rain on day three!!!

We all need to "GET READY"! The Shire office has a fresh new supply of flyers and information pamphlets that are FREE and contain information that could save your or your families from going through the terrifying experiences associated with Bush Fires.

Beverley has been very fortunate over the last few years and the team of local Bush Fire Volunteers do a great job each year when the odd fire has developed but like all things we need to be prepared for the "Perfect Storm" conditions. Really it only takes a brief amount of time but the most important aspect is to talk about it with everyone on your property! And make sure you have a **written plan**.

DFES (Department of Fire and Emergency Services) has also been busy and have developed a fantastic new web page

<https://www.emergency.wa.gov.au>

From this site (also accessible by most smart phones) you can see in real time all reported incidents around the state. It also lists in the form of a map what the fire danger rating is each day and many other features like Watch and Act, Advice and if necessary evacuation messages. Check it out now in the peace and quiet so you are familiar with it when you need the info.

The Bush Fire Risk Management Team are still visiting properties, most risks to assets have now been determined and the next phase will be to start looking at treatment options and how these can best be achieved over the next few years in order to lower the overall risk in Beverley.

We are looking at introducing the "Bush Fire Ready" programme within the Shire and would like to hear from anyone who has an interest in working in their community to raise their awareness and knowledge of Bush Fires and how to be prepared. If you think this may be something you'd like to become involved in, I would be happy to discuss the detail with you, please give me a call at the Shire office 9646 1200.

Happy harvesting to those on the land and keep cool if you are resident in town but mainly stay safe.

Best Wishes

John Hansen

Bushfire Risk Management Planning Coordinator

LEGO CLUB

LEGO club on Monday's
3.00pm - 4.00pm, \$2 per session
With a healthy afternoon tea
provided.



CARPET & LOUNGE SUITE CLEANING

It's Spring Cleaning Time!

- * Carpets Cleaned
- * Lounge Suites Cleaned Like New
- * Car Upholstery & Carpets Cleaned
- * House Total Clean When Moving
- * Fire & Water Damage Clean Up
- * Stripping & Sealing Floors
- * Vinyl
- * Wood
- * Slate

Phone Colin Today on
0417 971 786
Email colgrant1@bigpond.com



Do You Have a Farm or Private Fire Unit?



**Don't Get Stuck
at the Road Block!**

**Apply for a Vehicle
Identifier Sticker at the
Shire of Beverley office.**

**(Available to Vehicles and
Machinery with Direct Fire
Fighting Capabilities only)**



ARCHITECTURAL DRAFTING SERVICES



Australian Government
Department of Social Services

Now Open Volunteer Grants 2016

The Australian Government is inviting organisations and individuals representing volunteer based community groups to apply for Volunteer Grants 2016 funding.

These grants aim to support the efforts of Australia's volunteers. They provide small amounts of money that organisations and community groups can use to help their volunteers. They are part of the Government's work to support the volunteers who help disadvantaged Australian communities and encourage inclusion of vulnerable people in community life.

The funding will help volunteers to do their important work, and the grants of between \$1,000 and \$5,000 each will allow organisations to buy much needed equipment, such as computers, or help with training volunteers, fuel costs or undertaking background security checks.

Volunteer Grants is part of the Commonwealth Government's \$28 million Strengthening Communities programme that supports the capacity of communities to address local issues. Applications close at **2:00pm AEDT Tuesday, 20 December 2016.**

For more information and to apply visit <https://www.dss.gov.au/grants/open-for-application>. Alternatively, contact the Volunteer Grants 2016 Hotline on free call 1800 020 283 or email grants@dss.gov.au (link sends e-mail).

CHRISTMAS LIGHTS COMPETITION

**\$100
voucher
to each
winner**

**\$50
voucher to
one lucky
voter**

**It is time to get into the Christmas spirit by
decorating your home and business.**

To be eligible you must have your lights displayed by the evening of
MONDAY 12th DECEMBER 2016

(please note earlier date)

The categories are:

- * Shire's Residential Choice
- * Shire's Business Choice
- * People's Residential Choice

Winners will be announced at the
Christmas Concert on 17th December 2016 at the Platform Theatre

VOTE FOR YOUR FAVOURITE RESIDENTIAL DISPLAY

Voting forms and boxes will be at the following local businesses.

VOTING CLOSES at noon on Friday 16th December 2016.

* T Bone & Sons Butcher
* Beverley Newsagency

* Beverley Country Kitchen
* Beverley Supermarket

* Red Vault Restaurant
* Shire of Beverley

For further details please contact CDO, Kathryn McLean, at the Shire office, 9646 1200.

Competition open to all residents within the town boundary.

If you see any light displays that catch your eye, please contact Kathryn at the Shire office.

REGISTRATION OF INTEREST

Demolition of Infant Health Building and Tourist Bureau for the Cornerstone Project.
Please contact Ali Lewis Tuesday - Friday, 9.00am - 4.30pm
Shire of Beverley 9646 1200



Stay Active All Year



COMBINED HEALTHY LIFESTYLE PACKAGE

Combined

12 Month Gym Membership & Pool Season Pass

\$343 per adult (save \$38)

\$194 per senior (save \$21.50)



Contact the Shire Admin Office phone 9646 1200



To make the most from your
fertilizer investment



Call Brett Coxon

☎ 0427 766 506

Beverley, Brookton
Cuballing
Kulin (West), Narrogin
Pingelly
Wandering
Wickepin

Talk to me about all your
fertilizer requirements.
Our compound NPK, Vigour,
is suitable for all cropping
situations that require
potassium.



Merry Christmas to all
and here's to a great
2017.



Beverley to represent Western Australia in the national Australian Made Foundation Cup

Three of the eight children selected to represent Western Australian in the national Australian Made Foundation Cup in January call Beverley home.

Samuel Mclean, Grace Fisher and Anneliese Mellick all won their places on the state team after a series of trials and will compete in the tournament which will be held at the West Lakes Tennis Club in South Australia.

Forming a part of the Australian Made Summer of Tennis, the Australian Made Foundation Cup gives children 13 and under from rural and regional Australia the opportunity to compete nationally – something they may not be able to do often due to cost and travel constraints.

The Australian Made Summer of Tennis celebrates home grown athletes and local industry, highlighting the importance of supporting both to ensure a better future for all Australians.

"We are proud to support rural and regional Australia through this tournament," Australian Made Campaign Chief Executive, Ian Harrison, said.

"The Australian Made Foundation Cup reminds us all about the importance of nurturing local talent – whether that be the next generation of athletes, farmers or manufacturers."

Other Australian Made Summer of Tennis highlights include 'Breakfast with the Stars' events in Melbourne during the Australian Open.

"The event continues to be the pinnacle event for regional tennis players aged 13 and under, with this year's event attracting over 100 players from all over regional WA. The team selected to represent WA at the interstate event, produced quality tennis throughout the event, to earn their place in the team," Tennis West spokesperson Brooke Koenig said.

The best and fairest male and female players will each receive a \$1000 cheque, presented by the Australian Made Campaign and the Fed Cup Foundation, to help with their tennis development.

"Rural Australia has produced tennis legends like Rod Laver, Margaret Court and Pat Rafter. It's important that we create opportunities like the Australian Made Foundation Cup for the kids so they can develop their talents," Fed Cup Foundation President, Judy Dalton said.

To find out more visit www.australianmade.com.au.

Dale River Tennis Club



CHRISTMAS PARTY Saturday 17 December 2016

COST: \$15 per person

Santa will be arriving at 6pm

Named presents to be in by 5pm

To be followed by an evening meal of various roast meats, salads and sweets.

Please bring a salad and sweet to share, and if you could also please bring along a quality donation for the Christmas Hamper Raffles.

For more information, please call

Matt 9647 1167 or
Jenny 0407 983 449

**NORTHAM
HYUNDAI**

SALES ★ SERVICE ★ PARTS

9622 5588

www.northamhyundai.com.au

37 Fitzgerald Street, Northam

Weight Watchers News

The Beverley Weight Watchers group now meets at the RSL Hall, 50 Forrest Street in Beverley. Weigh in is at 10.00am for a 10.30am start.

December 2016

Christmas Stall - 03 December 2016

Final Meeting - 12 December 2016

January 2017

Return Meeting 09 January 2017

For more info, please contact Joan on **0417 911 424**.



BEVERLEY'S TRADING POST

Bagged Rags

Cotton 10kgs - \$20
Tea towel size
Phone Glennis 0456 958 455

GARAGE SALE

Sunday 04 Dec - 84 Lukin Street
8.00am - 2.00pm Furniture, books,
bric-a-brac, collectables and antiques
P 0402 015 915

FOR SALE

*New Blarney Section
Buy, Sell or Swap Goods
\$3 for 120 characters*

GARAGE SALE

Saturday 03 December - 17 Monger St
8.30am- NO Early Birds
Household items, garden tools, tools,
camping gear and much more.

FOR SALE

Piano and stool.
"Leswein" make.
\$400.00 ONO 0400569971



Beverley Bowling Club CHRISTMAS RAFFLE

\$1.00 - TICKETS - \$1.00



1st Prize

**Ham,
Christmas Pudding and
Christmas Cake**

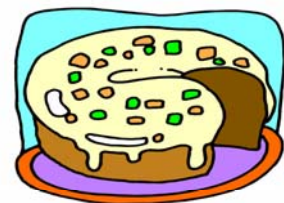
2nd Prize

**Turkey,
Christmas Pudding and
Christmas Cake**



3rd Prize

**Duck,
Christmas Pudding and
Christmas Cake**



**DRAWN AT THE FAMILY NEW YEARS EVE
BOWL OVER CANCER EVENT**

**SATURDAY 31 DECEMBER
SEE YOU THERE!**

Avondale Farm

For the second year in a row the AFPA Committee harvested and baled just under 400 bales of hay for Robbie and Comet. Both horses are over the moon and enjoying the delicious crop of hay. Massive thank you to Dwayne Haeusler and John Pratt for running the Saturday morning museum workshops and to all the men who come in and volunteer their time in the Avondale Museum.

Last month the Working Horse Society crew visited Avondale to have a look at the Avondale Harness collection and Harness up a horse. The day turned into a rather educational day for quite a few new people who wanted to learn about harnessing up a horse the correct way. The day also included a little bit of long rein practising in the sheep yards and cart work.

The October open weekend saw the Avondale picnic area play host to a local family gathering and saw quiet a few people visit Avondale over the weekend once again many more people fell in love with this place.

Avondale is now closed during the remainder of November right the way through to the beginning of March next year.

We hope everyone enjoys the break over the summer period and best wishes for the new year.

Robbie, Comet and myself would like to thank everyone for their support during 2016 and hopefully we see you all again in 2017.

Mon



SEASONS GREETINGS

*from the Pepper family and all the staff of
Beverley Supermarket & Liquor*

*We sincerely thank all our customers for their valued
support and wish one and all, a joyous Christmas and a
happy, prosperous New Year.*



Beverley Supermarket & Liquor

Christmas and New Year Trading Hours

Saturday 24 December	Open 8.30am - 12.30pm
Sunday 25 December	Closed CHRISTMAS DAY
Monday 26 December	Closed BOXING DAY
Tuesday 27 December	Closed PUBLIC HOLIDAY
Wednesday 28 December	Open 8.30am - 5.30pm
Thursday 29 December	Open 8.30am - 5.30pm
Friday 30 December	Open 8.30am - 5.30pm
Saturday 31 December	Open 8.30am - 12.30pm
Sunday 01 January 2017	Closed NEW YEARS DAY
Monday 02 January	Closed PUBLIC HOLIDAY
Tuesday 03 January	Normal trading resumes

MEETINGS

RSL General Meeting

Our final General Meeting is on Wednesday 14 December 2016, starting at 6:30pm at the RSL Hall, 50 Forrest Street.

Afterwards we will be having an informal Christmas windup and a farewell for two of our members.

Bar will be open after the meeting and those who come can order a fish n' chips dinner.



Beverley Playgroup Inc.

Annual General Meeting and Special Resolution.

It is proposed to adopt new constitution rules in place of all the existing constitution rules of Beverley Playgroup.

Tuesday 07 February 2017
10.00am onwards
Playgroup building,
Lennard St, Beverley
(on the Beverley school grounds)

Any queries: President - Hollie Smith 0409 299 089

ChemDry®
Drier. Cleaner. Healthier.™
Betta Finish



Superior carpet
& upholstery
cleaning

Freecall 1800 017087
bettafinish@wn.com.au
Fax 08 96225473

THANK YOU

HASTINGS FAMILY

Glenys, Jenny, Clayton and Helen would like to thank all the kind people who have expressed their sympathy on the passing of Russel.

It is wonderful to live in such a caring community.

A huge thank you to the Beverley Hospital staff who attended to Russel for weeks with such care.

We'd also like to thank the many who attended his funeral and also all those who helped the wonderful ladies at the Beverley Bowling Club who gave him a wonderful 'family and friend' farewell.



ALEXANDER FAMILY

The Alexander Family would like to thank everyone for their kind thoughts, cards, calls flowers and attending Margaret's funeral.

Thanks and appreciation is extended to the staff at Kalkarni Residence for their care of Margaret.



JOHNSON FAMILY

Ross, Sharyn and David would like to thank everyone for the love, help and support on the passing of our mum and nan, Vera Johnson.

We truly appreciate your kindness in our family's time of mourning.

THANK YOU

A heartfelt thank you to my friends and the many people who sent messages and spoke to me of their sympathy and supported me on the passing of my dear friend Vera.

It was a great comfort and Beverley is a wonderful community. I do thank you from my heart Betty.



We extend our sincere appreciation to the Beverley Fire Brigade and those who attended the small fire that broke out at Southbourne in the early hours of Tuesday 15 November.

Simon, Jenny, Andrew and Nicola Broun.



We would like to thank Dr Ester, Dr Ollie, Michelle and staff at the Beverley Health Service.

Thank you to our local crew Jenny, Peter and Marie from St John Ambulance.

The staff at St John of God, Murdoch for their wonderful treatment of Sam during her recent injury.

A big thankyou to those who sent messages of support and well wishes over the last few weeks.

Stephen and Samantha Gollan



CONGRATULATIONS

to
Daniel Watkins of Brookton
and
Aaron Sazanov of Beverley

On the recent successful completion of their
Engineering Tradesperson (Fabrication)
Trade Certificates

From Eddie & Staff
Beverley Hydra Boom

POSITION WANTED

- Bookkeeping
- Office Admin
- Customer Service

Have experience in
financial administration
and management of small
business.

1 or 2 days per week.

Ph: Gail 0456 226 674



It's Christmas at
BEVERLEY NEWSAGENCY

Call in and browse around we have a great range of:
TOYS, GIFTWARE, XMAS CARDS,
CHILDREN'S BOOKS, GIFT WRAP
& NOVELTIES
Merry Christmas Everybody

CARAVAN FOR SALE

1991 Coromal Caravan
licensed easy tow, 2 full size
stoves, air con microwave,
awning, ground sheet double
bed, TV and satellite dish plus
lots of extras.

Call Graham on 9643 1003.



Merry Christmas

To all our valued clients

*Thank you for your continued support of
Brookton Plumbing throughout the year.*

*We'd like to personally wish you and your
family a very Merry Christmas & a safe and
prosperous New Year.*

We look forward to seeing you again in 2017.

Yours sincerely

Sean Natasha Jack & Nikita

TV Antennas

**UHF CB sales, service
and installation**

**TV reception problem
solving and installation
of new systems**

Qualified communications technician
Reasonable labour charges
Onsite service
Based locally in Beverley

Regional Antennas Plus

ALAN PRIMROSE

0408 002 965

Beverley Pharmacy

Beverley Pharmacy and staff would like to wish everyone a merry Christmas and happy new year.

Our CHRISTMAS trading hours will be as follow:

Friday	23/12/2016	OPEN-9.00am to 5.00pm
Saturday	24/12/2016	CLOSED
Sunday	25/12/2016	CLOSED
Monday	26/12/2016	CLOSED
Tuesday	27/12/2016	CLOSED
Wednesday	28/12/2016	CLOSED
Thursday	29/12/2016	CLOSED
Friday	30/12/2016	CLOSED
Saturday	31/12/2016	CLOSED
Sunday	1/01/2017	CLOSED
Monday	2/01/2017	CLOSED
Tuesday	3/01/2017	OPEN-9.00am to 5.00pm

Thank you

for your support throughout 2016.

BEVERLEY HOSPITAL AUXILIARY - OP SHOP, OPEN Fridays 2.00pm - 4.00pm

Located at the Beverley Town Hall on the corner behind the Green Doors.

Donated, clean clothing is very much appreciated. No electrical appliances, underwear or bathers accepted.

Donated items may be left at Avon Trading please.

Dawson's

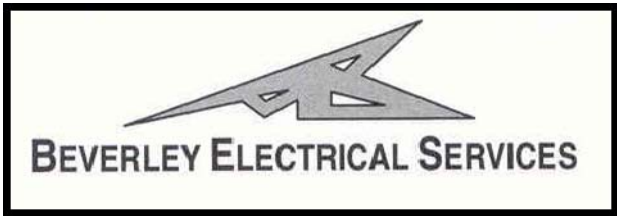
Concrete & Reinforcing

“Your Local Beverley Concreter”

- Concrete Formwork & Steel Fixing
- Driveways, Shed floors, Maintenance pits, Silo pads, Super sheds, House pads
- Fully mobile service
- Over 30 Years Experience
- 7 Days A Week
- Professional, Reliable Service

Phone for a Free Quote

SANDY DAWSON
Mobile: 0417 375 221
Email: pameladawson@bigpond.com



Karl, Hollie, Phoebe, Zac and staff would like to thank all their customers for their patronage throughout the year.

MERRY CHRISTMAS



We would like to wish everyone a very Merry Christmas and Safe and Happy New Year

We will be taking a short break from the 21st December till 4th January.

2017 Trading hours: 8am – 6pm Monday to Friday.

0429 887 535
PO Box 2 Beverley WA 6304
sales@beverleyelectrical.com.au
EC 006578 ABN 52 164 523 586

SAMBA - Card Game

WHEN: Saturdays at 1.00pm **WHERE:** CWA Hall
Afternoon Tea provided. Phone 9646 1271

Merry Christmas from WFI.



Merry Christmas and a Happy New Year

Charmaine Willing from WFI would like to wish her clients a very Merry Christmas!

Thank you for supporting WFI in 2016, and I look forward to working with you in the new year.

wfi.com.au

Good people to know.



WFI (ABN 24 000 036 279 AFSL 241461).



Country Women's Association

Another year has passed us by - it seems more quickly this year than ever.

We have been pleased to have new members in the Branch which augers for another great year in CWA next year.

We are sorry that our President, Glenda has not been able to continue with us and at this stage, we want her to know that we are all thinking of her and send our sincere best wishes to Terry.

Brian and I were pleased to be invited to represent CWA at a morning tea at Avon FM Radio 101.3. It was unfortunate that other members were not available to join us. It was a very informative and interesting morning. As I understand it, this is not the original York FM Radio as this station is now programmed to serve the Avon Valley and local information is always most welcome.

It was good to catch up with others who have similar interests to our members. We were able to have a voice modulation test and to see how the station operates. During our time there we actually saw Dr Sue in the studio being interviewed on several health questions. Though it was in a sound proof room, I was able to hear the session from the radio in the kitchen. Community notes and information is well received and we hope to have even more local input as the station is more widely broadcast. I sincerely thank Rhonda Jackson and Station Manager, Keith Taylor, for their kind invitation and hope we can work together again in the coming year.

November CWA meeting was a busy and well attended one. We are working on issues regarding the CWA Holiday units at Albany and will meet again in December to finalize our submission in this regard. The CWA Flats are open to all people at very reasonable rates. There is a variety of units located opposite the Middleton Beach Caravan Park and only a short walk to the beach and shops.

Once again, CWA is donating Citizenship Awards to the Beverley District High School. These will be presented at the end of year Presentation Night.

Our final meeting for the year will be a meal together at the Red Vault Restaurant on Saturday 10 December at 12.00 noon to eat at 12.30pm, with our husbands invited to join us.

Best wishes to all for a happy and safe Festive Season and a big THANKS to the Beverley Shire and CRC and to all who help produce the Beverley Blarney and Bulletin Board for our information.

On behalf of the CWA members
Lorraine Sims - Branch Secretary

Beverley Hospital Auxiliary Opportunity Shop

The Opportunity Shop pre-Christmas sales, (50% off everything) will be held on the 2nd, 9th and 16th of December before going into recess, re-opening on the 3rd February, 2017 - 2.00pm to 4.00pm.

A huge thankyou to all our volunteers who have helped throughout the year, you have been fantastic. We also sincerely thank Peter and Vicki Jenkin and staff of Avon Trading for once again being the drop-off point for donations.

Last but not least, thank you to the people of Beverley that support us. Without you all we would not be able to raise the funds for our Hospital and local health services.

The Hospital Auxiliary Committee wish everyone a very Merry Christmas and a safe and Happy New Year and we look forward to seeing you all in the Op-Shop in 2017.

December 2016 Roster

Friday 02 December

Heather McLean, Helen Bremner and Dalene Davies

Friday 09 December

Jane Murray, Anna Mally and Gracie Courtney

Friday 16 December

Val Moad, Sera Minchin and Jeanette Johnson.

SUZIE'S BEVERLEY MARKET PLACE

Now making available a wide variety of old wares, tools, furnishings and collectables during normal hours at 106 Vincent Street (corner of Forrest Street).

"Yesterday's memories are today's treasures".

Please phone Sue for information on 0488 113 995.

Beverley Sandblasting



**Compressor Available
For dry hire to clean
headers and balers.**

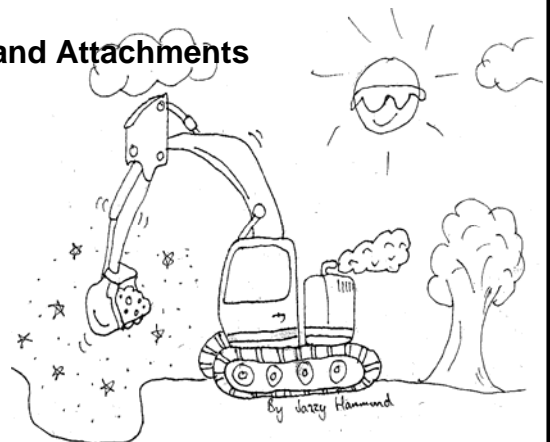
Call Brad 0429 426 002



AMMOND FENCING

Now offering the following services

- 12t Excavator
- 30t + Excavators and Attachments
- Rock Breaker
- Grader
- Trenching
- Bobcat and Truck
- Road Building
- Site Clearing
- House Pads
- Postholes



EXPERIENCED & RELIABLE OPERATOR. COMPETITIVE RATES

**Phone Jamie Hammond
0427 866 488**

Warriors Wellbeing The State of Men's Wellbeing – what's it mean for you?

The month of November held a significant awareness campaign for blokes. Blokes gave it their best shot at growing a "mo" for Movember and the theme this year was "Stop men dying too young."

Three main areas of focus and awareness of the Movember campaign are:

- Prostate Cancer – kills approximately 3000 Aussie men each year. In addition to this 2.4 million men are living with a prostate problem, the most common BPH (prostate enlargement).
- Testicular Cancer – The second most common cancer for men between the ages 18 – 39, but with an almost 95% cure rate if picked up early, our message of "check ya balls, and get to your doctor if you notice a change" is a simple one.
- Mental Health and Suicide Prevention – A very complex area, but our key messages are talking about, addressing and dealing with difficult and/or distressing times in our life (situational distress). Seeking help early and getting the right help pertaining to our situation makes a big difference.

So what about you? What are the other issues that are important for blokes in Regional WA, especially at this time of the year?

In all the work we do our key message is looking after yourself first and foremost. No matter if we are a farmer, contractor, working in agribusiness, or a community member we can sometimes forget the little things, the basics, during these busy times leading up to Christmas.

Understandably at this time of the year people go hard and work long hours. Even during harvest no one can work 24/7. Here are a few simple tips:

Fatigue is one of biggest causes of accidents/injuries/deaths (know your limits). Sleep are we getting enough (we need 8 hours)? Limit nicotine, caffeine, alcohol and big heavy meals late at night. Give yourself a chance to relax before bed (avoid bright screens electronic devises).

Fuelling your body – breakfast is still the most important meal of the day. Eat a good source of fibre ie whole grains, tomatoes, and fruits such as apples, berries, citrus fruits and pears. Fibre stays in the stomach longer than other foods = feeling full for longer, slow release = more sustained energy.

Balanced diet is important - eat red meat, chicken and fish with some greens. Your snacks can be healthy like apples, bananas, fruit/nut mix and remember to stay hydrated - drink lots of water!

Road Safety. Whether visiting from the city or just not used to country roads, remember truckies are trying to make a living, we know roads are a public space but respect goes both ways. Extra trucks are going to be in and out of receival points, farm gates and at crossroads. Give appropriate space and don't push your overtaking, be patient.

On behalf of the RMHI team please take care finishing your harvest, stay safe on the roads and don't forget the importance of having a good break over the holiday period. It is important to recognise and reward your efforts and achievements.

Cheers Terry and the Team

The Regional Men's Health Initiative
delivered by Wheatbelt Men's Health (Inc.)

PO Box 768, Northam WA 6401. Phone: 08 9690 2277

Email: menshealth@4blokes.com.au

www.regionalmenshealth.com.au



RSL Indoor Market

The next RSL Indoor Market is on Saturday 03 December from 9.00am-12noon. Crafts, bric-a-brac, olive oil, massage therapist and more.

Who knows you might just find a nice Christmas gift at a stall. There will also be a Christmas raffle.

New sellers welcome at \$6.00 per table. Sausage sizzle will be available.

Call Irene on 9646 0470 for information.

Membership Renewals are due.

Service Membership applies to people who have served in the ADF or any Commonwealth Force. Affiliate Membership is open to non-service people from our community.

If a family member whether it is a Grandparent, Parent or other relative who served in the armed forces you are welcome to join the Beverley RSL Sub Branch. Contact Elaine McCasker on 9646 0005.

Christmas Present Wrapping Service

Do you have a special present you would like wrapped?
Or would you like us to take the hassle out of wrapping presents?
Talk to the friendly staff at the Beverley CRC today.

Small \$2.50 per item
Medium \$3.00 per item
Large \$4.00 per item

Natway Furniture & Constructions

ABN: 62 824 726 465

**Wayne & Natalie
Ashworth**

Qualified
Carpenter & Joiner
Tradesman

- General Building Work
- Furniture Construction & Restoration

27 Brooking Street,
Beverley

**Phone:
08 9646 0159**

Mobile: 0417 973 415
(Wayne)

Mobile: 0429 491 039
(Natalie)

BEVERLEY SWIMMING POOL

OPENING ON 02 NOVEMBER '16

**** CLOSED ON TUESDAY'S ****

2016/17 FEES & CHARGES

ADULTS	€3.00 PER ENTRY
CHILDREN	€1.00 PER ENTRY
SPECTATORS	€1.00 PER ENTRY



SEASON TICKET PRICES

ADULT	€102.00 PER SEASON
PENSIONER	€76.50 PER SEASON
CHILD (17 AND UNDER)	€34.00 PER SEASON
FAMILY (2 ADULTS & 2 CHILDREN)	€240.00 PER SEASON

AVAILABLE AT THE SHIRE OF BEVERLEY

YOUR 2 WATERING DAYS

Watering with sprinklers should be before 9am and after 6pm on your two days.

Last digit of your house number	Your 2 watering days are
1	Wednesday & Saturday
2	Thursday & Sunday
3	Friday & Monday
4	Saturday & Tuesday
5	Sunday & Wednesday
6	Monday & Thursday
7	Tuesday & Friday
8	Wednesday & Saturday
9	Thursday & Sunday
0	Friday & Monday

For example if you live at 55 Rose Street, the last digit of your house number would be 5. So your sprinkler days would be Sunday and Wednesday. If you don't have a house number, use your lot number. If you would like further information, visit the Water Corporation website at www.watercorporation.com.au or call the Waterwise Infoline on 13 10 39.

WINDSCREENS & GLAZING

All glass replacements

- vehicle, residential & commercial -

Licensed to handle insurance work and private

AVON VALLEY WINDSCREENS

Ron Robinson

0429 001 393

reron@westnet.com.au

www.avvwindscreens.com.au

- | | |
|------------------------------------------|--------------------------------------------|
| * Specialising in all glass replacement | * Safety glass |
| * Chip repairs | * Residential glazing * Commercial glazing |
| * Windscreen replacement in all vehicles | * Tinting * Shower screens |
| * Door windows * Rear windows | * Shelving * Mirrors |



We come to you!

Lic MR 11693

BEVERLEY MEDICAL PRACTICE

Providing quality health care to the Beverley community and surrounding areas

Doctors Availability

Dr. Norah Kalibbala

Monday 9:00am – 4:00pm
by appointment only

Dr Olay Omoniyi

Monday 9:00am – 5:00pm
Wednesday 9:00am – 1:00pm
Thursday 9:00am – 5:00pm
Friday 8:00am – 4:00pm
by appointment only



Dr. Remi Adebayo

Tuesday 8:30am – 5:30pm
by appointment only

Dr Esther Oladipo

Tuesday 10:00am – 5:00pm
Wednesday 8:00am – 5:00pm
by appointment only

Practice Nurse – Wendy

Monday 9:00am – 1:00pm
Wednesday 9:00am – 4:00pm

BP checks, spirometry, vaccinations, counselling Health Assessments, wound care etc.

Your friendly practice team

Practice Manager – **Dawn**
Receptionist - **Jan and Kris**
Diabetes Educator - **Leonie**
Dietician- **Laura**

Western Diagnostics Pathology- Sue 9646 0724

Open Mon, Wed & Fri 8.00am – 1.00pm
No appointment needed

“My Health Record”

**Did you know that you can register for your My Health Record today?
Just ask our friendly staff to assist with your registration.**



Aboriginal health care clinics - every Wednesday 9.00am -1.00pm

We are holding an Aboriginal health care clinic every Wednesday morning, make an appointment or just drop in for all your medical needs
Annual health checks, bp checks, scripts, referrals etc.

The Beverley Medical Practice welcomes new patients!

Protect yourself against **Shingles** – a free vaccine is now available for people aged 70-79 years of age please contact our friendly receptionist for details on when you can get yours.



Christmas trading hours



The Beverley Medical Practice will be closed from Saturday 24 December 2016 up to and including Monday 02 January 2017 re-opening on the Tuesday 03 January 2017
Please ensure you have all your medical needs to cover you through this period.

The doctors and staff would like to take this opportunity to wish you all a merry Christmas and a safe and happy new year

Care outside normal opening hours When the Beverley Medical Practice is closed you can always get medical attention by calling ReadyCare 1800 225 523 or by attending the Beverley District Hospital, located in Sewell Street Beverley
We're experienced staff will triage the patient and contact the on call Doctor.

For all Emergencies call 000

Beverley St John Ambulance



SUB CENTRE NEWS

CAN YOU HELP YOUR COMMUNITY?



The Beverley St John Ambulance is a Volunteer run organisation and needs more willing volunteers to continue their dedicated service to the Beverley community. No matter where you live, you can make a positive impact in the Beverley community. With St John, you'll learn new skills like endorsed first aid qualifications, build strong relationships with new people you meet, and work with emergency services to make a real contribution to your community. You'll also receive a range of fantastic benefits.

When you volunteer with St John, you'll be part of the welcoming team that's changing lives.

And the first life that will change is yours.

To volunteer please contact:

Scott Morrell: 0427 728 822

Leesa Morrell: 0427 196 283

Jenny Rayner: 0407 461 371

or visit the website: <http://changelives.stjohnambulance.com.au/changelives/volunteer>



MEMBERSHIP – CHECK YOUR COVER

- If your child is over 18 years of age they are no longer covered under your family membership
- If your residential address is not in the Beverley Shire (i.e. living in Perth) you are not entitled to a country ambulance membership.

Current members if you are paying your annual membership via EFT please use your Member Number as your reference. This makes tracking your membership payment much easier for our Treasurer who volunteers her time to get all the memberships processed.

DON'T DELAY, BECOME A MEMBER TODAY

You just never know when you or a loved one is going to need an ambulance! Make sure you become a member of St John Ambulance. Membership forms are available to complete at the Beverley Pharmacy and payment can be either cash or cheque.

NEWS FROM OUR COMMUNITY PARAMEDIC

Drew Richardson, Community Paramedic, Central Wheatbelt

The Beverley sub centre provides training all year round with all volunteers who have the opportunity to attend sessions twice per month. Well done to all the volunteer officers who have completed their skills training for the 2016 CEP. (Continuing Education Program). There are only a few volunteers left to complete this over the next couple of weeks. Thank you to Scott and Leesa Morrell for their hard work all year in their training positions within the sub centre.

John Lane (Subcentre Chairperson) and myself attended the LEMC (Local Emergency Management Committee) meeting last week, and tabled our sub centre's progress in preparing for a large incident. The various exercises, triage training, desk top scenarios and safety systems that our officers have in place were all discussed, and the committee acknowledged the effort that the ambulance service and our sub centre has gone to in contributing to the local Emergency Management arrangements.

AMBULANCE TRIPS

Our local volunteer Beverley Ambulance Officers continue with their huge commitment to our community. Below are the trips completed over the last 2 months. Well done to all the volunteer ambulance officers.

MONTH	TRIPS
OCTOBER	27
NOVEMBER	9

*as at 22nd November

CALL FOR NOMINATIONS FOR HEROES

St John Ambulance Western Australia has a proud history of helping people in sickness, distress, suffering and danger. But we're not the only ones. Everyday, members of the community, emergency staff and volunteers go above and beyond to deliver first aid, preventing death and serious injury to those around them. We recognise these people as the true heroes of our communities and wish to acknowledge their actions through the presentation of Community Hero Awards.

Who's a Hero?

The St John Ambulance Community Hero Awards are given annually to honour nominated individuals who have displayed enormous courage, and exceptional judgement in assisting another human being with an emphasis on delivering critical first aid. Selected nominees are awarded at a ceremony at Government House each year. The Community Hero Awards are awarded in two categories:

Community– awarded to members of the general public and **Service** – awarded to staff and volunteers from St John.

Who can nominate?

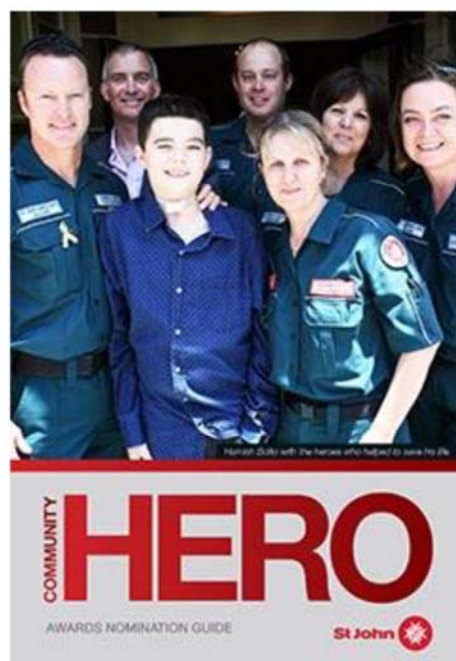
Anyone can nominate another person for a Community Hero Award. An individual only needs to be nominated once to be considered for an award. Nomination forms for 2016 can be submitted via an online form through the St John Ambulance Website or alternatively download a PDF form. Visit the website: www.stjohnambulance.com.au

Nominations must be received by St John Ambulance WA by 5pm, Wednesday, 14 December 2016.

FIRST AID KITS



First Aid kits are a great item to have in your car, work vehicles, workshop & house. Starting to think about Christmas present ideas? See Geoff or Jenny Rayner at Beverley Farm Services (57 Forrest Street, Beverley) for all your first aid kit needs. Check out the catalogue if you need something different from what they have in stock as it can be ordered in for you.





PRESIDENTS REPORT 2016 AGM of the Beverley Historical Society Inc

Good afternoon and I thank you for your attendance today.

I see the purpose of our Society is to receive and conserve local history, to showcase it to the local and wider community and to pass on this love and significance of Beverley history to as many age groups as possible; and, of course, to enjoy some social time together in the process. The last year has been very busy in endeavouring to fulfill all these aims. Morag did say to me that the Historical Society can consume all of your spare time and in my first year as President – I am fast learning that she may be right!!

As a small group of 15, we were really saddened this year by the passing of two very dear members, Peg Kempton and Bob Hall. Both contributed a large amount of information and time to this Society and we all miss them. On a happier note we are pleased to welcome new members Bruce Mann and Anne Fisher and trust that they get much pleasure and interest from being members.

Our main activities for the year have been:

- ⇒ **10th Light Horse** – talk by Delys Richards in November. This was of particular interest to the older citizens and I thank Morag for organizing this.
- ⇒ **Printing Press** – we received two grants from the Shire for the restoration of and new shelter for the Press. So far we have it restored but not relocated back into the garden. I thank the Shire for their co-operation and the Men's Shed and, in particular, Ken Sherwood for his assistance with this project. I also thank the **Men's Shed** for the repainting of the verandah poles around the Museum.
- ⇒ **Remembering THEM** Exhibition was rolled over to continue the Centenary of WW1 for 1916 with new display items. The story of Beverley's Orphan Digger featured in the Blarney in April.
- ⇒ We had a number of **Group visits** – Bindoon Historical Society, The Station Arts group (co-operation on the Vampire play), 1967 school reunion group, several caravan clubs, the Year 2's from BDHS had the historical activity day and last week the Amazing Race school holiday activity.
- ⇒ **Historical Displays** were done for the Beverley Show and the Beverley Heroic.
- ⇒ **Excursions**:- Bus trip to East Beverley, Balkuling, Jacobs Well, Dangin, Toapin Weir, Quairading and to the original Catholic Church.

- ⇒ **Research** - It has been a busy year for those who help with all the requests for family and other historical information relating to Beverley. Thank you to all members who continually do the research.

My Thanks:

I would like to pay particular thanks to Joy Smith – my Vice President for her support, enthusiasm and ideas. In particular her tireless efforts to get more people into the Museum and her attention to group visits.

To Gail Alabach for her ever reliable work as our secretary, Blarney note reporting and many other jobs associated with her position. We hope you enjoy doing other things for our society with your retirement from the secretary's position.

Treasurer, Erica Murray – thank you for always keeping our books in a healthy state – most appreciated.

Thank you to our Auditor, Bill Whitney.

And I think maybe the biggest thank you of all must go to Morag Whitney – in writing this report I feel there aren't many areas that she hasn't played some very big part in – from group visits, to research, to the many interesting reports you have done for the Blarney, the RWAHS report, letters of support to various causes, displays for the Show and the Heroic, opening on Saturdays etc etc. I know you get a lot of interest out of doing it all, but we say a huge thank you for your continued efforts, Morag.

I express our thanks to the **Beverley Garden and Tree Society** for their wonderful maintenance of our surrounds here. It is a very big relief that we don't need to worry about any of that.

And lastly I would like to thank everyone who has helped in any other way to maintain the Museum, do the rosters on Sundays and open at the 'drop of a hat' for visitors to our town.

Diana Smith, President.

10 October 2016



York Chiropractic

MacLachlan Centre – 4 Trews Road



Clinic available every week

9641 1500

Dr Alexandra (Sacha) Browne

B.Sc (Chiropractic) B.Chiropractic

Dr Liam Welfar

B.Chiro (Hons) B.Sc (Chiro) B.Sc (Env. Health)



Also available in Cunderdin and Merredin

Unique Strokes W.A. Painting & Decorating

Reg. No. 4236

ROB BAIN

QUALIFIED LOCAL TRADESMEN

For Guaranteed Traditional
Workmanship & Prompt Free Quotes

Phone: 08 9647 2102

Mobile: 0418 904 013



TAX RETURNS

FORTIZ BUSINESS SOLUTIONS
(formerly M.E (Mel) VIVIAN)

Registered Tax Agent

Public Accountant

Business Consulting

OFFICE HOURS:

FRIDAY 9.00 A.M – 4.30 P.M

101 VINCENT ST (Bankhouse)

BEVERLEY

Please phone for an appointment

9646 0282

passive energy systems

ALL

ELECTRICAL SERVICES

Commerical, Industrial
& Residential

local specialists in

SOLAR POWER

GRID-CONNECT

OR
OFF-GRID

WIND POWER

the sky's the limit

call John or Marlene for a quote:

646 77 263

info@pvenergy.com.au - www.pvenergy.com.au

100% customised to suit your
personal needs & budget!



*Terms & Conditions Apply. Finance is offered through Solar Finance Solutions Pty Ltd

LEH Earthmoving



Little Eco Hill



Backhoe - Bobcat - Bulk Haulage

- Experienced owner / operator
- Six wheeler tip truck and trailer
- Bulk Cartage including sand, gravel, blue metal etc. (supply and deliver)
- Grader Hire Service available
- All aspects of sand pads (house, shed, water tanks)
- Site clearing and site clean-ups
- Auger up to 650mm.

DAN WILKINSON

0417 093 090

9648 1006

PO Box 261 Beverley WA 6304

dan.zoe@bigpond.com

ABN: 76 315 246 782

Results of the 2016 Beverley Rose Show

CHAMPION BOWL OR VASE: Gaenor Carter,
2nd Geraldine Faithful

BEST SINGLE ROSE IN SECTION A: Jo Sattler

BEST NEW EXHIBITOR: Chris Mann,
2nd K Moulton

CHAMPION IN SECTION B: Geraldine Faithful,
2nd Lesley Heal

PRIZE FOR CHILDREN'S SECTION: K Moulton

OVERALL CHAMPION: Jo Sattler

MOST OUTSTANDING EXHIBIT: Gaenor Carter

Show organisers the Beverley Tree and Garden Society, RSL and CRC would like to congratulate all prize winners. We also thank all entrants for supporting the rose show and making it such a success. Our sincere thanks to all our wonderful sponsors: Beverley Supermarket and Liquor – local IGA, Beverley LPO, E. Squire Contracting, Beverley Community Resource Centre, Beverley Tree and Garden Society, Gaenor Carter and the Greatly Stud. Finally we also thank our judge, Sue Deadman and all the volunteers who helped to set up and tidy up. The raffle winner was Elaine McCasker.



BEVERLEY PHOTOGRAPHY GROUP

If you are a keen photographer and would like to know more information about our group please contact Colleen.

Check out our Facebook page for all of the latest info and workshops.

Contact Colleen Sleer
P | 0408 319 022

E | caugust@bigpond.com

BEVERLEY TRANSPORT SERVICE

Your local carrier for over 30 years.

**GRAIN, FERTILISER, LIME, HAY, WOOL AND
GENERAL TRANSPORT**

We are now able to cart
liquid fertiliser from all suppliers.

Garry & Sarah Miller
Ph: 9646 4066 or 0428 464 066
miller@reachnet.com.au

JOHNNY CASH & CO.

Tribute Show

SATURDAY 03 DECEMBER 2016

BEVERLEY PLATFORM THEATRE, 120 VINCENT STREET



JOHNNY CASH & CO - Fenton Oldmeadow and Narelle Belle (aka Johnny Cash and June Carter) will take you on a nostalgic, artistic journey of one of the most influential American Musicians of the 20th Century.

TIME: Gates open 7.00pm and the show starts 8.00pm

COST: \$35 Adult Standard, \$30 Adult Concession (Senior, BSA Member, Student)
\$17.50 Children (under 15) and \$300 Group 10 (Pre-booked)

ONLINE BOOKINGS: www.trybooking.com/NQRT

TICKETS: Beverley Newsagency

(Table Bookings can be reserved for groups 4 - 10 at the Newsagency 9646 1142)

Coffee van and Food available

Licensed Bar, Strictly NO BYO,

Under 18's must be accompanied by parent/legal guardian

CONTACT: 0419 040 063 | beverleywa.com | Facebook: Beverley Station Arts

*Beverley Station Arts is supported by the Departments of Culture and the Arts and Regional Development,
Royalties for Regions and Country Arts WA.*



WAPHA
WA Primary Health Alliance

phn
COUNTRY WA

An Australian Government Initiative

Media Release

Primary Health Exchange allows community to have their say on health

31st October 2016

WA Primary Health Alliance (WAPHA) is excited to launch its new online consultation hub, Primary Health Exchange.

WAPHA Wheatbelt Regional Manager Fiona Bush said the online community engagement website would allow people in the Wheatbelt to have their say on projects and share their thoughts on the planning and design of primary health care in their local community.

"WAPHA, which oversees the strategic commissioning functions of WA's three Primary Health Networks, including Country WA Primary Health Network, primary objective is to improve health outcomes and patient experiences through the commissioning of appropriate services where they are most needed."

"We recognise that engagement is an ongoing process and Primary Health Exchange provides a platform where people can exchange ideas, opinions and experiences across primary health," Ms Bush said.

"Primary Health Exchange is designed to support and encourage people to get involved in the planning of local primary health care in the Wheatbelt, to support the PHN to meet the health needs of our local community."

Ms Bush said WAPHA's community engagement framework aims for participation of local communities in policy development, planning and service delivery.

Current topics which people can have their say and join the conversation on include My Region, Innovation in Primary Health, Patient Stories and changes in primary care for Aboriginal people.

For more information about Primary Health Exchange and to register to participate, visit the website phexchange.wapha.org.au

ENDS

For more information:

Fiona Bush
Regional Manager - Wheatbelt
WA Primary Health Alliance, Country WA PHN
Tel: 0429 160 959
Email: fiona.bush@wapha.org.au

t: 08 6272 4900
f: 08 9277 5304
e: info@wapha.org.au

2-5, 7 Tanunda Drive
Rivervale WA 6103

P.O Box 591
Belmont WA 6984

www.wapha.org.au

Wildlife Emergency Response Western Australia

We are a network of carers in Western Australia specialising in the rehabilitation of injured and orphaned Wildlife.

We have a group of dedicated specialist carers to work with any wildlife found on roadsides.

Contact Numbers

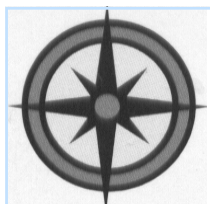
Phyllis Facey: 0437 483 175

Lynn Powell: 0417 959 913

Sonia Cooke: 0423 806 757



All types



All areas

ALLROUND CONCRETE

**SHED FLOORS, DRIVEWAYS, FOOTPATHS, HOUSE SLABS,
SILO PADS, FERTILIZER/GRAIN/SUPA SHEDS**

ROBBIE HIGGINSON

MOBILE: 0427 384 977

HOME: 9641 2459 FAX: 9641 2339

ABN: 26 997 512 874

PO BOX 345 YORK WA 6302

Max Hunter's Firewood Supplies

Phone: 0429 646 123



The Jarrah Bush Wood is sold by the tonne. Delivered in truck or trailer loads.

BEVERLEY TREE AND GARDEN SOCIETY

Our November meeting was held in the Beverley Caravan Park camping area, where we hope to set up two raised garden beds with herbs and vegetables for the use by the campers and caravaners that visit our community.

With 17 members present, the AGM was held with all committee positions declared vacant. Newly elected positions are as follows:

President

Linley Thompson
phone 0429 953 800

Vice President

Betty Cable
phone 0400 569 971

Secretary

Dorothy Sampson
phone 0429 989 031

Social Secretary

Valerie Lamb
phone 9646 0681

Treasurer – Raewyn Blight

This was followed by the general meeting where it was decided to hold our Christmas lunch at the Freemasons Hotel on Tuesday 06 December at a cost of \$25.00 a head for members and \$35.00 for non-members. Please contact Dorothy Sampson as soon as possible if you wish to come to the lunch and bring a small gift to the value of \$10.00 if you wish to participate in a secret Santa.

The club will then go into recess until the 07 March when we will meet at John Lane's garden on Bremner Road.

READY TO SHEAR

Contract or cost plus
Matt 0467 026459



Geoff and Jenny

At Beverley Farm Services

*Wish our customers a happy Christmas and a safe
and prosperous New Year.*

*Thank you for your patronage in 2016
We look forward to being of service to you in 2017.*



Beverley Country Kitchen

Wayne and staff

Wish all a happy and safe Christmas
and an awesome New Year.

Thanks for your support in 2016,
For those traveling during this time drive safe.

We look forward to being of service to you in 2017.



'Like' us on Face Book

C & B TRANSPORT

DELIVERING GENERAL FREIGHT AND CHILLER GOODS

3 DAYS PER WEEK OR AS REQUIRED

TO

BEVERLEY, BROOKTON, PINGELLY

FROM

PERTH DEPOT CANNINGVALE MARKETS

PLEASE CONTACT PAUL BALDWIN

ON

0417 953 968 or 08 9646 0461

BIG ENOUGH TO DO THE JOB SMALL ENOUGH TO CARE



**GERARD & VALERY
OF**

BEVERLEY GAS AND PLUMBING SERVICES

**THANK ALL THEIR CLIENTS FOR THEIR CUSTOM OVER
THE YEAR**

AND

WISH THEM ALL A VERY MERRY CHRISTMAS

AND

A HAPPY, HEALTHY AND PROSPEROUS 2017

PL216

GL 386



**GJ & VJ SEEBER
TRADING AS**



**BEVERLEY
GAS AND PLUMBING SERVICES**

Your *LOCAL*

Class 'A' Licenced Plumber & Unrestricted Licenced Gas Fitter

Established in Beverley since 1997
Servicing Beverley and Surrounding Districts

NO JOB TOO SMALL OR TOO BIG

Mob: 0418 929 141

Tel: 9647 2115 (AH)

Fax: 9647 2109

PLUMBING - CLASS 'A' LICENCE

- ◆ ACCREDITED WATERWISE AND ENVIROWEST PLUMBER
- ◆ SEPTIC INSTALLATIONS
- ◆ SEWERAGE CONVERSIONS
- ◆ MAINTENANCE AND INSTALLATION OF ALL DOMESTIC AND COMMERCIAL PLUMBING REQUIREMENTS
- ◆ BACK FLOW INSTALLATION AND TESTING

GAS FITTING - UNRESTRICTED LICENCE

- ◆ MAINTENANCE AND INSTALLATION OF ALL COMMERCIAL AND DOMESTIC GAS REQUIREMENTS

Plumbing Licence No.	PL216
Gas Licence No	386
Backflow Licence No	103



**BEVERLEY
PATCHWORKERS
AND QUILTERS**

Pat has completed her king sized quilt which we wrote about when she began making it in May this year. Its been interesting to watch the process week by week as each block was quilted with batting and backing as separate pieces, then they were all joined together with a type of sashing. Working this way is a great way to handle a large quilt.



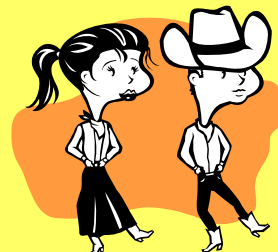
This is Pat's second quilt using this pattern and method. Now she tells us she is to begin another but this time larger than king size.

If you would like to come and have a cup of tea with us and see what we are making please phone Jan at 9646 0796 for information.

COUNTRY LINE DANCING

**Thursday's
9.30am - 12.00pm
At the Beverley Town Hall**

**Enquires:
Jill 9646 0283**



Beverley Community Directory Listing

Business Listings 2017

D
E
A
D
L
I
N
E

M
O
N
D
A
Y

1
2

D
E
C
E
M
B
E
R

Option 1 (90mm x 65mm) Full Colour - \$170 inc GST
(Please complete all options)

Option 2 (90mm x 30mm) - \$40.00 inc GST

Business Section: ie Computers/Health	
Business Name:	
Address:	
Telephone Number:	
Email Address:	
Website:	
Description: (max 4 lines)	

Option 3 - \$15.00 inc GST

Company Name	Address	Telephone	Contact Name

Terms and Conditions

- I am authorizing Beverley Community Resource Centre to publish my details in the Beverley Community Directory Listing.
- It is my responsibility to notify, in writing, Beverley Community Resource Centre any changes/additions to my listing.
- I am authorizing Beverley Community Resource Centre to invoice my business with my advertising choice of:
 - Option 1 - \$170.00
 - Option 2 - \$40.00
 - Option 3 - \$15.00
- I have proofread and I accept the listing to be true and correct at the time of this agreement and will not hold the Beverley Community Resource Centre responsible for any errors or omissions.

Signature: _____

Full Name: _____

Position: _____

Company: _____

Date: _____



Beverley Community Resource Centre
 PO Box 310 Beverley WA 6304
 P: 08 9646 1600 F: 08 9646 1295
 W: www.beverleycrc.net
 E: accountsbcrc@westnet.com.au ABN: 83 320 522 911

BEVERLEY NATURALISTS CLUB

BROOKING STREET RESERVE

We have been very busy working on hazard reduction work in this Reserve.

We have done a lot of slashing and whipper snipping and now we are working on removing the excess fallen timber to try and make it safer from fire.



We will be working on this all summer. We are removing this timber by physical manual labour to minimize the impact on this reserve. We will also continue to whipper snip the grass that is still around the outside sections of the reserve.

There have been many people noticing the work we have been doing and many comments from people who have been very impressed by our hard work and the difference it is making. Removing the excess fallen timber will make it easier to walk through and see the beautiful orchids and other native flora.

We are also digging out all the perineal veldt grass that has been overtaking sections of the reserve. This is a terrible weed and stops natural revegetation from accruing.

So, reducing the fire risk also helps promote natural regrowth and improve bio-diversity. We are hoping that we will be able to have 2 small sections, then we can have a very cool hazard reduction burn in Autumn to help us further manage the weeds.

The bank around the Brooking Street side is very steep and has unknown hazards within the massive weed growth so by a cold slow burn would clear this and then we could manage it by spraying to prevent further problems there.

*The staff of Avon Trading
wish our customers a
very happy Christmas and
a wonderful New Year.*

*Call in and browse our
NEXDOOR store
with all sorts of outdoor furniture
and beautiful gift ideas.*



Shazmac Plumbing

From our family to your family

Merry Christmas & Happy New Year

See you all in 2017

Phone: 0408 189 987

PO BOX 116

Beverley WA 6304

shazmac1@westnet.com.au

PL: 5829 - GF: 7422 - RHL: L100443 - ABN: 18 531 685 326





The other area is the Dempster Street area and once this has been done we can look at re-vegetating this area. We have a small group of very dedicated people that have been working tirelessly to make a difference for our wonderful Reserve and I thank you all very much for the many hours of hard work and dedication. We could not have achieved what we have without you and it is wonderful to see the difference it is making. Our next working day will be on Tuesday 13 December. We meet at 7.00am near the stand pipe on Brooking Street for breakfast of fruit salad and start work about 7.30am.

We have all signed a disclaimer and anyone wanting to help will need to sign one before commencing work.

Please when parking your cars make sure you do not block access to the stand pipe as many people are carting water now.

Hope everyone has a wonderful and safe Christmas and New Year. For details call Phyllis 0437 483 175.

T.M. Hair Design

Thanking all our loyal clients at Beverley's only local family hairdressing salon & wishing you all a safe & happy Christmas filled with fun & laughter.

Have you made your Christmas appointment?
Availability is slim so call straight away to avoid disappointment.
To have your hair looking at its best for all the Christmas celebrations, be sure to ask your hairdresser about the beautiful Lisaplex service most appropriate for you.
It leaves your hair feeling so soft, strong, shiner & is not expensive.
Saves you heaps on products which will not give you the same result as Lisaplex.

We are still happy to offer our senior gents a special price & the opportunity to walk in without an appointment on Thursdays.

At Secrets... Are you ready for Christmas? Not to many sleeps to go.

If you have not ventured down to the far eastern end of Vincent St near the bridge to see us, you don't know what you have missed.
We have a lovely selection of gifts from inexpensive to bigger ticket items for you to choose & we will wrap for you as well.
We have our Gift Certificates ready for the hard to choose for family & friends & lots of special little items for appreciation gifts for teachers & care givers.
In Secrets Clothing Boutique the spring/summer collection's well under way with more lovelies to come. Look for the new silk items in store. WOW!!!
New ranges of jewellery from Europe. Not available anywhere else in WA.
Gorgeous new hats for all.

As usual, it's first in best dressed as repeats are avoided.

We welcome browsing even if you go elsewhere for your hairdressing needs.

Call in to 100 Vincent St; Or Phone 9646 1122.

VALLEY AIRCONDITIONING & REFRIGERATION

VALLEY AIRCONDITIONING & REFRIGERATION WILL MAKE SURE YOU STAY COOL AND COMFORTABLE THIS SUMMER.

- SUPPLY & INSTALL SPLITS & DUCTED SYSTEMS.
- SERVICE & REPAIRS FOR ALL A/C AND REFRIGERATION UNITS.
- COMPETITIVE, FRIENDLY, RELIABLE & LOCAL BUSINESS.

**CALL MARK
0408 755 466.**

ARC Lic #L120329



Licence Number: L/NMRB5463

Merry Christmas and Best Wishes for a safe, happy and prosperous 2017.
From Alan and Sally Beverley Tyre Service

Please note we will be closed 14th January - 29th January 2017

Ph/fax Alan on 9646 1607 or a/hrs 0428 129 575

BEVERLEY TYRE SERVICE



48 Dawson Street
(Old Telecom Shed)



LOOKING FOR CHRISTMAS IDEAS FOR YOUR CLIENTS



Skittles Packets with your business logo or name for only \$2.00 per packet.
(yes including the skittles!)

Promote your business, company, school, visitor centre, sporting club and local products with style and quality with customised stickers.
If you can stick it, we can print it!

The Beverley CRC now has a range of stickers available in finishes such as: high gloss, vintage or matte. With various shapes and sizes, we would definitely have something to suit your needs or we can get customised sizes.

We can print with your artwork or our design team can help you create your own brand at reasonable rates.

Create a professional edge above your competitors. Call the team at Beverley CRC now and get promoting!

SUBLIMATION PRINTER

Personalised Gifts and Products

WHAT CAN WE PRINT?

- Mugs - \$12.95 Text or \$14.95 Graphic
- Travel Mugs - \$29.99
- Water bottles 400ml - \$11.95 text or \$14.95 graphic
- Water Bottles 700ml - \$24.95 Text or \$29.95 graphic
- Stubby Holders - \$7.99
- Stone Slates - \$19.95
- Photo Panel - \$14.99
- ChromaLux Metal Signs - \$ 19.95
- ChromaLux Wood - \$54.95
- Coasters Set of 4 - \$15.95
- T-Shirts - from \$19.95

and lots more, just ask us our friendly staff today, we can design and print.



TRAVEL MUG



MUGS



WATER BOTTLE STUBBY HOLDER



STONE SLATES



COASTERS

We offer discounts on wholesale and bulk orders



PO Box 310, 132 Vincent Street Beverley WA 6304
P | 9646 1600 E | beverley@crc.net.au W | www.beverleycrc.net

UPCOMING EVENTS

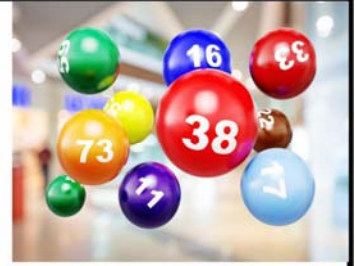


We bring you **FRIDAY BINGO**

When: Friday 09 December

Where: Beverley Lesser Hall

Time: 1.00pm - 3.00pm



PIES COOKING COMPETITION



Everyone loves a pie and sometimes the hardest decision is SWEET or SAVOURY! So this year we will have two categories to satisfy the judges taste buds. The winners each receive a \$100 Kitchen Warehouse voucher. Entries must be delivered to the CRC by 10am on Monday 12 December 2016. Remember to put your name and number on the underside of the plate.

KIDS CRAFT WORKSHOPS MONDAY 19 DECEMBER

Keep your kids busy for the morning during school holidays with our kids craft workshop. The workshops will be starting at 9.30am and finish at 12noon. Your kid/s will be creating take home masterpieces at multiple craft stations, at just \$15 p/person. Plus we will provide healthy snacks during the morning. Registrations are essential, please phone 9646 1600 or email: beverleybulletin@westnet.com.au



NEWS FROM YOUR LOCAL CRC



KODAK PHOTO LAB

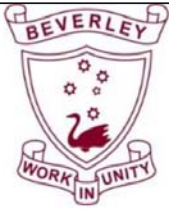
Our new wireless photo lab makes processing photo's from your phone, tablet or memory card easier and cheaper. Get your photos ready early for Christmas. 6' x 4' prints are 30c each.

OUR NEW TRAINEE

Welcome to the CRC team
Lydia Ugle.
Lydia will be studying Certificate III in Business Administration over a 12 month period at the centre.
Congratulations Lydia.



We will only be closed for the public holidays during the Christmas period.



Beverley District High School

For more information about the school, visit our website!

The Jungle Book

Our students enjoyed the opportunity to star as singers, dancers, actors and stagehands at our special production of The Jungle Book, led by our specialist music teacher Ms Romola Brennan. The hall was full to overflowing as parents, community members and visitors all crowded in to see the show.



Our star cast included Thomas Mearns (and Blair Lamb) as Mowgli, Rebekah Aynsley as Bagheera, Bronte Cleland as Shere Khan, Kirsty Noonan as Baloo, Jamelia Ugle as King Louie, and Olivia Lucas as Colonel Hathi.



Each of the primary classes performed a special piece, Jamie-Lee Speedy thrilled us with acrobatics, and the secondary band was terrific as they set the mood with a wonderful percussion backing for the performance.



Our backstage team of Tom Mellick, Henry Sattler, Thomas Davidson, Nathan Styles and Brodey Taylor was very professional. We greatly appreciate Tim Kilpatrick generously donating his time to engineer the sound on the night.



The choir was showcased throughout and we had great performances by some helpful elephants, some cheeky monkeys, a loyal wolf pack, some terrific jungle creatures, and some rather menacing (if not very clever) vultures. The wonderful backdrop created by local artist Jenny Broun added great ambience to the production.



The school would like to acknowledge all the generous help and support afforded us by the Shire of Beverley and its crew, as well as the help of parents, community members and staff volunteers in staging this show.



Zoo Excursion

Two classes of excited students headed off on a trip to the zoo recently. The Year Two class and the Year Three class, their teachers Mrs Thomas and Mrs Wansbrough, and parents helpers Linda Lewis, Amanda Farr and Sarah Aynsley all ventured off in search of adventures and new knowledge.



The students had close encounters with reptiles, learnt about how animals are classified, and enjoyed exploring all the wonders of the zoo and its grounds.

WA Education Awards

Staff from Beverley DHS nominated two outstanding educators for recognition in the awards this year.



Mrs Karen Wansbrough was nominated for WA Primary Teacher of the Year. Karen is a well-loved and highly respected member of the school staff. She is a very dedicated and effective teacher: she knows her students very well

and knows exactly how to ensure that they are engaged and challenged every day.



Mrs Marie Walker was nominated for WA Education Assistant of the Year. The innovative and inspirational Mrs Walker is **one of four finalists** for the award from across the state.

Well known for her

photographic skills, her boundless positivity, and her support for students with additional educational needs, Mrs Walker's WA Education Award story can be found on the school's website. You can also visit the **Public Education in Western Australia** facebook site. Marie's story was posted on 9 November. We are sure you'll be keen to 'like' this!

Marie and the Room 10 team from Beverley DHS will attend a special breakfast at Crown Casino on 28th November at which the 2016 winners will be announced. We wish her all the very best.

Wheatbelt Ball

Beverley District High School was delighted to host secondary students from across the Wheatbelt for a wonderful evening of relaxation and enjoyment. The

young people looked absolutely glorious in their dresses and suits, and danced the night away. The Ball was organised by Beverley DHS's student support worker Lyn Kay. We appreciate the help of Stacey Stanfield, Monica Van Der Snoek, Linda Lewis and volunteer staff. Look for photos in the next Bulletin.

In the Swim

Our students Year 4-10 are lucky to receive expert coaching to develop their swimming skills from talented local expert Jacinta Murray through a scheme funded by a grant from Sporting School. The PP to Yr 3 students will have a water fun day on 30 November.



Student Leaders Forum and Fun Day

Our school is committed to providing leadership pathways for students and we are delighted to be hosting another function for student leaders from across the Wheatbelt region. The special activity day includes rock wall climbing, Zorb Balls, a water slide, team building and development activities. **Special thanks to Beverley Agricultural Society** for their sponsorship of this event. Our Year 4-10 students will join in with the fun for an afternoon session at the recreation grounds.

Coming Up this Month

Kindy/Pre-Primary Christmas Concert: The famous K-PP Christmas concert is a fun event for families of our Kindy and Pre-Primary students. It will be held on Saturday 3 December from 4.45pm.

Graduation functions: Our Year 6 and Year 10 students will celebrate their completion of important phases in their schooling with separate functions on Monday 12 December.

School Presentation Night: Our presentation night will be held on **Wednesday 14 December**. This will be a chance to showcase the talents of our students and announce our new student leaders.

Donations for book prizes would be very welcome and greatly appreciated. Please contact the school office if you are able to sponsor a book award.

Please join us to celebrate **Carol Veitch's retirement...**

Carol Veitch has dedicated 20 years to helping Pre-Primary children learn and grow at Beverley DHS. All are welcome to a special *thankyou and farewell* afternoon tea to be held in the school library from 3.15pm on Wednesday 7th December. Please rsvp to the school office 9646 1165 by Monday 5 December.



Station Gallery & Platform Theatre News

The Station garden is available for public use at any time,
just open the gates and enjoy!



Well, it's almost Christmas and Beverley Station Arts is inviting everyone to join us on Saturday 17 December to some Christmas cheer at the Station. This free Family Christmas Concert is when the whole of town and surrounds come together for some fun and entertainment. There will be carol singing, Santa, and then a special treat as we have Ray Ryder and his band who've been touring WA since October, coming to Beverley to play their *Bringin' it to the Country* concert. Read further in the Platform Theatre news for more information. We are Thanking in advance Noel and Valda of Beverley Elders who as with the past two years are offering a Happy Hour to clients and friends from 7pm. Such generosity! Also, Ray Ryder and his band will run a free Music/Song writing Workshop on Sunday 18 December at 9am at the Station. See page 38 for full details of this workshop.



Train Carriage

Work has continued at a steady pace due to the wonderful voluntary efforts of Hadyn and Barry. Unfortunately, more than half way into the huge sanding job, Hadyn ruptured his rotator cuff of his right shoulder. We wish you a speedy recovery Hadyn, and yes, we know you have a good left arm, but we'd prefer you were completely healed before returning to the job! Meanwhile, at the other end of the Station complex, we now have a shed installed to store all the chairs and tables, banners etc, leaving space in the back stage for performers, and one end to cordon off for sound and lighting equipment. This will make packing up after events so much smoother.



Artist-in-Residence

Hazel Moore returned for a quick stint at the Station our Artist-In-Residence with her friend Jen Perry and though the intended workshop didn't eventuate, many drawings and paintings between the two of them were made. Mid November saw painters Claudia Woeltjes and Geoff Reeves arrive at the Station full of enthusiasm to hold a pre-Christmas sale opening at the Station Gallery on the evening of the Johnny Cash show. The idea being to invite local artists to BYO Easel and painting and use the outdoor space as well. Here's hoping it's successful! Claudia and Geoff are here till the 16 December. The it's a change of arts genre for the next artist as we welcome back writer Marlish Glory on the 9 December and staying till the 23.

FREE Writing Workshop Wednesday 14 December 10.00am - 4.00pm for beginners to advanced writers.

Conquering the Blank Page:

Multi-award winning American author Jennifer Egan identified "the blank page" as the fear of writing badly. And that the "better writing" comes with multiple drafts.

Write your way out of self-doubt, make — the fear of writing badly a thing of the past through creative writing exercises designed to build up self-confidence and storytelling skills. Students will also be taught the basics of story, plot, character, setting and exposition, writing in the first and third person, dialogue and pace. The course will be a fun and relaxed way of invigorating the creative writer within. If you'd like to attend you can contact Marlish Glorie at her email address- marlish@westnet.com.au or phone her at home: (08) 9339 8194 or try her mobile: 0439 092 697. And if the day time date doesn't suit, an evening class can be arranged. Marlish is happy to talk with anyone who may be interested in writing a short story, play or novel.

For all information on residencies check with Artist in Residence Coordinator Marylou Hutchinson on 9647 1027 / 0427 085 511 or email: hutchinson@wn.com.au

Artists in Residence Programme 2016

February: Christine Painter - textile artist - QLD.

March/April: Nada Murphy - painter - WA

April/May: Mutsuko Bonnardeaux - textile artist - WA

May: Jill Ansell - painter - WA

June: Hazel Moore and Sandy Robertson - painters - WA; Lesley Austin painter - WA

July: Kathy Allam - WA; Susan Payne + 3 others from WA Watercolour Soc.; Dr Myer Taub, Andrew Lamprecht, Palesa Matabane (performing artists) from South Africa, and photographer Aliza Levi (Vic)

August: Josh Wells - photographer - WA

September: Paul Amyes - photographer - WA

October: Alan Pickering - painter - WA

November: Elixir performers; Lyn Nixon - mixed media- WA; Hazel Moore - painter -WA; Claudia Woeltjes and Geoff Reeves - painters - WA (16 - 30)

December: (01- 08) Claudia Woeltjes and Geoff Reeves - painters WA; Marlish Glory - writer - WA (09 -23)



Beverley Station Singers

Nine Station Singers travelled to Dunsborough for the Songfest Friday 11 - Sunday 13 November and did themselves proud without the accompaniment of their music director Kelly and her guitar. It was a little nerve-racking singing amongst 500 likeminded warblers, but a wonderful experience nevertheless!



Station Singers George, Linda, Norma, Sarah and Bolla before setting off to sing.



Ball Point Penguins singing one of their comedy numbers.

The next get-together will be at 7pm on Wednesday 07 December to practice blasting out a few carols for the Beverley Country Christmas Concert on Saturday 17 December.

Kelly Newton Wordsworth directs the group on a monthly basis (\$35pp to be paid up-front 3 monthly, or \$50 per session). Anyone interested in joining the singing group contact Tracey Fleay- Mob: 0409 481 029 or E: traceyfleay@hotmail.com



Platform Theatre

ELIXIR - CIRCUS DRAMA - produced by Head First Acrobats, "ELIXIR" was a fantastic show having us all hold our breath on a number of occasions with their gutsy circus acts. And they did enjoy their couple of days at the Station residence prior to their performance. We hope to see them back here sometime with their children's show.



JOHNNY CASH TRIBUTE - a show for everyone to let their hair down and enjoy, so come on... dig out those cowboy hats and boots, or rhinestone suits for a fantastic country/rockabilly night reminiscing to two sets of the 'Man in Black' followed by a set of music to dance the night away!

- WHAT: "JOHNNY CASH & CO
- WHERE: Beverley Platform Theatre
- WHEN: **Saturday 03 December**

- **TIME:** Doors open 6.00pm, Show starts 7.30pm
- **COST:** Adult Standard \$35, Adult Concession \$30 (BSA Member, Student), Children U/15 \$17.50, Group of 10 \$300
- **TICKETS:** Beverley Newsagency or **ONLINE BOOKINGS:** <http://www.trybooking.com/NQRT>
- Table Bookings can be reserved for groups 4 -10 at the Newsagency 96461142
- Coffee van and Food available. Licenced Bar, Strictly NO BYO, Under 18's must be accompanied by parent/ legal guardian.



COUNTRY CHRISTMAS CONCERT with RAY RYDER

Beverley Station Arts Presents an evening of fun for all the family! Starting with a carols singalong with the Station Singers, then listening to the angelic voices of the Beverley School Choir as Santa arrives with his helper to entertain the kiddies, followed by RAY RYDER BRINGIN' IT TO THE COUNTRY!

Who's Ray Ryder? Well, he's an experienced singer, songwriter, musician and entertainer whose talents have been enjoyed by audiences around Australia and overseas for over 20 years. He has shared the stage with **Sting, Chris Isaak, Bryan Ferry, John Farnham, Shirley Bassey, James Morrison, Screaming Jets** and more. Ray and his five-piece band are bringing his hot new country music to the country in the first stage of a mammoth Australian tour. Ryder promises his concert will be a fun, energy-filled showcase of original music for people of all ages.

- **WHAT: COUNTRY CHRISTMAS CONCERT**
- **WHERE:** Beverley Platform Theatre
- **WHEN: Saturday 17th December**
- **COST: FREE**
- **TIME:** Gates open 5.00pm, Show starts 5.30pm
- **BYO Picnic and Drinks, or food will be available at the venue**
- **Happy hour compliments of ELDERS Beverley from 7.00pm**

5.00pm: Gates open

5.30pm: Carols Singalong with BDHS CHOIR & BEVERLEY STATION SINGERS

6.00pm: Santa and his helper Amanda?

6.45pm: Winners of the Shire Townsite Christmas Lights Competition Announced

7.00pm: **Ray Ryder Bringin' it to the Country**

Free Music Workshop Fresh from their Concert on Saturday 17 December at the Beverley Platform Theatre, Country Rock singer/songwriter Ray Ryder and his band will run a free Music/Songwriting Workshop on Sunday 18 December at 9am in the Beverley Station Gallery and/or Platform Theatre. Ray and his multi instrumental touring band will host a music workshop covering a range of topics in the hour and a half workshop including:

- Skills
- Songwriting
- Music Business/Management
- Sound and lighting production
- Sound Recording

All ages and all levels of musicians are invited and are welcome to bring along their own instrument. Numbers are limited to 20 participants so get in quick to register at the Beverley Newsagency or call Jenny Broun on 0419 040 063 or email: brounj@westnet.com.au



Calendar of Events for 2016/17 Season:

September: Saturday 10 - Country Choir Bash presented by VOICE MOVES

October: Tuesday 11 - In A Dark, Dark Wood produced by BARKING GECKO
 November: Friday 4 - ELIXIR (dramatic circus act) and COCO CABANA DANCE (burlesque) 15+Rating
 December: Saturday 3 - JOHNNY CASH TRIBUTE SHOW
 December: Saturday 17 - Country Christmas Concert with RAY RYDER
 February: Saturday 11 - BARRY MORGAN and support act FAMOUS SHARRON
 March: Saturday 18 - Desperately Young at Heart with ROBERT HOFFMAN & Le Diner en Blanc
 April: Thursday 13 - Monday 17: 49th ANNUAL ART PURCHASE EXHIBITION (presented at the Town Hall) with OFFICIAL OPENING Thursday 13 April

If any community group is looking to raise funds please keep it in mind that the Platform Theatre is available for events such as movie nights. With just a minimal hire cost of screen and projector, it makes for an easy fundraiser. If you would like to be included on the email list for notification of coming events (so you can forward to friends), email secretary Sarah Miller miller@reachnet.com.au

Beverley Station Arts Membership

Becoming a member will give you discounted rates for all events plus free entry to the Easter Art Exhibition Opening Night. The cost is \$30 for the first year and there after \$25 per annum. You only need to attend three events and your membership is covered. Your support and will assist us in maintaining the venue and to continue presenting a variety of entertainment for your enjoyment. We look forward to seeing you at the events we have planned for this season. To become a member of Beverley Station Arts Inc (Friend of the Station) please see our treasurer Pauline Knight at the Newsagency for a Membership Application form and payment. Membership forms can also be downloaded from www.beverleywa.com (NB cheques to be made payable to Beverley Station Arts) and send to PO Box 112, Beverley 6304.

Station Gallery Open Hours

11.00am - 3.00pm

Thursday, Friday, Saturday and Sunday

BEVERLEY STATION ARTS WISHES ALL READERS A VERY HAPPY CHRISTMAS

Jenny Broun, President, Beverley Station Arts: 9646 1500 / 0419 040 063 / brounj@westnet.com.au



NEED PRACTICAL TRADE ASSISTANCE?

D & M Services

(Design and Manufacturing Services)

Solving a range of practical needs and problems..

Specialising in:

- ✓ Kitchen renovations
- ✓ Shop fitting and modifications
- ✓ Furniture restoration
- ✓ General carpentry
- ✓ Alterations & installations
- ✓ Metal based fabrication
- ✓ Motorhome and Caravan fitouts
- ✓ Pergolas, Decks & Gazebos
- ✓ Designing and planning

Guy Slingerland

0403602335

Painter Decorators

All repairs & painting

Lyndon & Cameron Grover

0427 661 302

lydongrover@bigpond.com

Reg: 3941



- Plastering
- Pressure Cleaning Roof
- Gyprock
- Spray Painting
- Repairs
- Gutter Replacing





No West Australian would like to see European wasps (*Vespula germanica*) set up home in

their backyard.

Problematic and attracted to your food like flies, but packing more sting than a bee, European wasps are a social menace and are regarded as the world's worst social wasp pest.

If that's not bad enough they threaten our natural insect biodiversity through predation and competition, have been recorded attacking bee hives and can impact on horticulture industries due to their ability to damage fruit when feeding.

Established in South Australia, Victoria, New South Wales and Tasmania, European wasp queens hitchhike to WA in freight and cargo. The queen sets up shop and quickly establishes a nest containing thousands of wasps. By the end of summer new queens are produced and disperse to start new nests.

December marks the start of the European wasp field season where the Department of Agriculture and Food, WA (DAFWA) works with the community, local government and industry in deploying surveillance traps to detect if these wasps are nesting nearby.

We have a six month window each year where we can

selectively trap for these wasps and destroy their nests to ensure they don't get a foothold in WA.

European wasps are similar in appearance to the

Report



European wasp



Paper wasp

common and widely established yellow paper wasp (*Polistes dominulus*). However, they can be distinguished from paper wasps by their solid **black** antennae or 'feelers' and their **attraction to meat** and food products. When in flight, they hold their **legs close to their body**, unlike paper wasps which have long

dangly rear legs.

How to help



Please take photos if you can and report any suspect European wasps via the options below:

Use our free **MyPestGuide™ Reporter** App or MyPestGuide website mypestguide.agric.wa.gov.au



EASY • DIRECT • SMART

Wholesale pricing from your local WA distributor.

Custom build and design combinations of both hot rolled and cold form steel portals providing maximum strength and efficiency.

Project managed supply and installation.

Ryan Patterson

0427 424 672

admin@phoenixsheds.com

phoenixsheds.com

Countryside Memorials



Cast Stone

Granite

Marble

Plaques

Added Inscriptions

All Repairs and Restorations

25 YEARS PROFESSIONAL EXPERIENCE

FREE DESIGN AND QUOTE

Servicing All W.A. Country Areas

9622 5544

OXTER SERVICES

www.oxter.com.au

oxter@westnet.com.au

Email photos and location details to info@agric.wa.gov.au or
 Call 1800 084 881.

Adopt-a-trap

Want to participate by adopting a surveillance trap? If you're happy to bait your trap with a small cube of fish fortnightly from Christmas to Easter and report any suspect wasp catches, please call us or email your name, postal address and contact details. We are looking for participants willing to commit to a few seasons of trapping.



You can see the location of our surveillance traps going up on our **MyPestGuide** website. Select the 'European wasp trap' project to see the trap locations and help us fill in the gaps!

More information

For more information visit our webpage agric.wa.gov.au/wasps. No internet? Please call us on 1800 084 881.

Reporting unfamiliar pests

DAFWA's Pest and Disease Information Service (PaDIS) screens enquiries for new weeds, pests and plant diseases, which could negatively impact the success of WA's local horticulture and agricultural industries and the ability to grow home produce.

COMMITTEE INFORMATION UPDATES

Have the Office Bearers and committee changed following your AGM?

If so can you please forward the details to Kathryn at the Shire of Beverley.

Phone: 9646 1200 or
 email: cdo@beverley.wa.gov.au

Wandu Electrical
 ALL ELECTRICAL SERVICES
 Domestic - Commercial - Industrial - Rural
 EC 10598
 A 8232981

- Safe and Reliable Power and Lighting systems
- Sheds, Workshops, Fixed Plant and Machinery Repair
- RCDs, smoke alarms and compliance testing



- Solar PV Inverter Systems
- DC appliance and Battery testing
- Motorhome, Caravans and Vehicle repairs

Ryan 0429 775 585 wandu.electrical@hotmail.com

AVON BLINDS

Made Local in the Avon Valley
 Free Measure & Quote Service

- Roller Blinds
- Vertical Blinds
- Roman Blinds
- Patio Awnings
- Bistro Blinds
- Automatic Awnings
- Solar-Glide Awnings

Huge Colour & Fabric Range

Office: 96461948

Mobile: 0447990850

Visit: www.avonblinds.com.au

Email: sales@avonblinds.com.au

WD & LM SLEEP BOBCAT



Specialising in

House tank and shed pads, laser level to engineered specifications, also bobcat site work, block cleanups and post hole digger.

M: 0429 461 314

GREENHILLS INN

SUNDAY 27 November 2016

Sunny Sunday Session from 2pm –6pm
Bouncy Castle and baby goats from 5pm-6pm



FRIDAY 2 December 2016

Come along for the official lighting up of the amazing NEW display of lights and Christmas fun. It will not disappoint!



SUNDAY 4 December 2016

Texas Country Music Group are at Greenhills Inn with the band CBC. The community are invited to join the great country music in the



Function Room from 12pm—4pm.

SATURDAY 17 December

Greenhills Inn Christmas Party. Come and catch up with friends and enjoy a quite one before Christmas.



CHRISTMAS DAY AND BOXING DAY

25-26 December 2016



SATURDAY 31 December 2016

New Years Eve Party in the newly renovated Function Room. Music, and dancing .



Opening Hours:

Mon-Tues from 2.00pm

Wed—Sun from 12.00pm

Meals every night

PHONE 9641 4095



VOICE OF THE AVON on 101.3 FM SUNDAY

8.00 - 11.00 Sunday Morning Coming Down with John
12.00 – 1.00 Soul & Inspiration – Susan
1.00 – 4.00 Lazy Sunday - Damo
4.00 – 6.00 Sunday Session - Esmerelda

MONDAY

6.00 – 10.00 Monday Breakfast - Bob
10.00 – 1.00 Mustang Sally - Susan
1.00 – 4.00 Folk/Swingin' Jazz Club Peter

4.00 – 7.00 Celtic Note - Joe
7.00 – 10.00 Classical Sounds - Chris

TUESDAY

6.00 – 9.00 Tuesday Breakfast - Bob
9.00 - 12.00 Around the World – Leila
12.00 - 3.00 Country Roads – Joe
3.00 – 6.00 Rocking on the Avon - Denni

WEDNESDAY

9.00 – 1.00 A Little Bit of Everything - Joe
1.00 – 4.00 Potpourri – Peter
7.00 – 9.00 Back to the Future – Frank

THURSDAY

6.00 – 9.00 On the Upbeat - Rhonda
9.00 – 12.00 Mustang Sally - Susan
12.00 – 3.00 Kaleidoscope – Chris
3.00 – 6.00 Sweet with a Beat - KT
6.00 – 9.00 True Rock & Roll - Milo

FRIDAY

6.00 – 10.00 Friday Breakfast - Bob
10.00 – 12.00 Memory Lane - KT
12.00 – 3.00 Music of a Lifetime - Paul
3.00 - 6.00 Tonkin Along - Tonks
6.00 – 9.00 Friday Night Country - Milo

SATURDAY

6.00 – 11.00 Saturday Morning Variety Show - Terry
12.00 – 3.00 Saturday Mix – Graham
6.00 – 9.00 Saturday Night - Rugo

Station Phone Number 9641 2422

Email: radio6ycr@hotmail.com

Facebook: Voice of the Avon 101.3 FM
Website: www.voiceoftheavon.org.au – live

streaming of Voice of the Avon 101.3 FM
90 hours of local presenters each week.

Effective 19 September 2016



York Estate Agents (Beverley Division)

Good, Bad or Ugly We Sell!

Free Appraisals

“Properties WANTED we have qualified buyers waiting now”

Estate Experts

Professional and Trustworthy

Residential-Helen Stubing 0407 964 611

Rural- Mike Bawden 0403 268 158

Rentals- Jenette Callaghan 0418 929 011

Office - 9641 1335 Fax - 9641 1334

www.yorkfn.com.au

RA– AN ENTERPRISES

All Dozer and Excavator Work

Including:

Dam Sinking

Dam Cleanout and Enlarging

Excavator with Wood Shears,

Tilt Bucket and

Hydraulic Grab.

Locally Based at West Kokeby

**Phone Ray 0428 936 621 or
08 9646 4136**

INFORMATION

CHILD HEALTH CLINIC

I am going on leave from 05 December 2016 – 30 January 2017. During this time there will be 3 clinics in Beverley on:

- ⇒ 12th December,
- ⇒ 9th January and
- ⇒ 23rd January.

Weekly service will resume from 30 January.

Appointments can be made through the hospital on 9646 3200, immunisations are available through the local GP.

If you need to speak to a child health nurse you can contact Northam Primary Health on 9690 1320, Monday - Friday, 8.30am - 4.30pm.

I apologise for any inconvenience and wish you all a happy Christmas and look forward to seeing you next year.

Kathy Wilton

Community & Child Health Nurse.

PARSONS BROS SHEARING SERVICE



Servicing - PINGELLY, BROOKTON, WANDERING
and surrounding districts

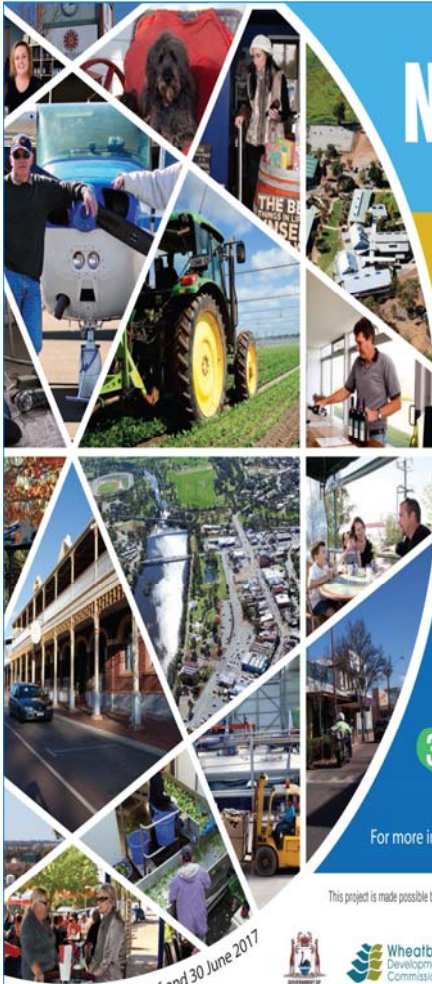
PHONE: Luke 0428 300 001

Mark 0428 308 460

All enquiries welcome and confidential

KIDS ALIVE – DO THE FIVE!

1. [Fence the pool](#)
2. [Shut the gate](#)
3. [Teach your kids to swim – it's great](#)
4. [Supervise – watch your mate and](#)
5. [Learn how to resuscitate](#)



NEW FREE OFFER

Wheatbelt Business Directory

Business listings are free for the Directory's first 12 months*
Advertise your business online & Wheatbelt-wide.
It's easy to do. 3 easy steps to increase your marketing!

1 Visit: www.heartlandswa.com.au/wheatbeltdirectory

2 Fill out all your details include your logo or a photo

3 Press "Go Live" NOW

For more information contact heartlands WA on 0409 896 604 or info@heartlandswa.com.au

This project is made possible by the Wheatbelt Development Commission Wheatbelt Regional Grants Scheme through the State's Government Royalties for Regions program.



* Free between 1 July 2016 and 30 June 2017



BEVERLEY PLAYGROUP

New Bike Path, Shed and Sand Pit

In a previous Blarney we listed and thanked all our wonderful helpers who were involved in getting this project completed. The new outdoor area looks fantastic and is getting plenty of use by the children. It's something that the children of Beverley will enjoy for many years to come. We again thank the Beverley School for their support and for allowing us to develop this area to suit Playgroup.

AGM and Special Resolution

Beverley Playgroup will be holding their Annual General Meeting & Special Resolution at the MOASH Building/Playgroup Room on the Beverley School grounds, Lennard St, 10.00am Tuesday 07 February 2017. It is proposed to adopt new constitution rules in place of all existing constitution rules for Beverley Playgroup. This is in alignment with the new Associations Incorporation Act 2015, which commenced on 01 July 2016, replacing the previous Act of 1987.

If you would like to view a copy of the proposed constitution or have any other queries, please contact President Hollie Smith – 0409 299 089.

We look forward to seeing lots of members and other interested community members there.

Thank You

The 2017 Beverley Playgroup committee would like to say thank you to all those members who helped open and close Playgroup and run the different activities each week. We really appreciate your help!

Christmas Party and Playgroup Certificates

Our end of year Christmas Party is on Thursday 8th December. A relaxed and festive morning where we get a visit from Father Christmas and we say farewell to the children who will be leaving Playgroup to attend Kindy in 2017. Special certificates will be given to those children going to Kindy. This will be the final Playgroup session for the year.



PLAYGROUP CHRISTMAS PARTY

When: Thursday 8th December 2017

Time: 9.30am – 11.30am

Where: At Playgroup, Lennard St, Beverley

Bring: A plate of morning tea to share

We would like to wish all Beverley Playgroup members and their families a safe and happy Christmas & New Year!



STORYTIME NEWS

Another large crowd of over 20 children and their caregivers attended the final story time session for 2016 to listen to Special Guest Reader Mrs Angela Sims read 'The Very Hungry Caterpillar'. The session was followed by a 'sorting' activity for the children, and some singing and dancing.

A huge thank you to our other guest readers, Jo Johnson and Sandy Shaw, and of course, to the children and their caregivers who have supported the sessions by attending! We have been excited to see so many children there each month. Also thank you to the Beverley Shire for allowing the use of the library area for the sessions, and especially Sheridan for helping us out with the set up and tidy up!

Due to the positive response that we have had from the community, we look forward to continuing the monthly Story Time sessions in 2017. These will commence in February. We have a host of guest readers and lots of ideas for some fun and games after the story- We look forward to seeing you there!



Wheatbelt Continence Clinic

Trouble toilet training children? Night time bed wetting?

Child refusing to poo – then having an accident?

Can't make it to the toilet on time?

Leakage when you cough, sneeze or lifting something heavy?

Did you know there is financial assistance up to \$1000 per person?

Need a prescription renewal?

Would like a home visit – catheter change?

Located in York, but happy to travel!



Phone consults - \$40.00

Phone Number has been corrected, our apologies.

Kim Allison: 0437 649 797 /

wheatbeltcontinenceclinic@outlook.com.au



ARCHITECT AT LARGE

Appointments 0429 421 287
rpecheva@rpearchitect.com.au
www.rpearchitect.com.au

New Houses | Additions & Alterations
Live Your Dream Life | Love Where You Live

Professional Expertise & Personalised Service
Accredited Design in the Central Wheatbelt

Rosalie
Pech Eva
Architect



LEH Earthmoving



Little Eco Hill



Year Round Grader Hire Service

All your on farm grading requirements including:

- Fire breaks
- Roaded catchments
- Contour bank installation and removal,
- Levelling old fence lines and
- General road maintenance.

DAN WILKINSON

0417 093 090

9648 1006

PO Box 261 Beverley WA 6304

dan.zoe@bigpond.com

ABN: 76 315 246 782



Earthmoving, Ag equipment, Tractors, Trucks,
Plant and Machinery.

PRE SEASON REPAIRS AND MAINTENANCE

**Don't be late getting your equipment into the
paddock.**

Servicing and routine maintenance.

Rebuilds and major repairs.

Accreditation Inspections using lifts so a complete under vehicle
inspection.

Able to access most computers. Cat, Cummins, Detroit, Road
Ranger, Trucks, Light Vehicles.



MRB6817

Fully Mobile

**We can carry out
ALL repairs on
farm from
servicing to major
rebuilds**

**In Season we are
available 24/7**

So if you %^&* it we will fix it

**We are a Western
Australian
Registered Repairer**

**We use
Recommend
Sell
Penrite oils**

**ONSITE REPAIRS
AND SERVICES**

PO Box 316
Beverley 6304

onsiterepairs@bigpond.com

**Ph. Karl Morrell
0417 998 549**

THE BEVERLEY BOWLING CLUB

**INVITE MEMBERS & NON MEMBERS,
FAMILY & FRIENDS
FOR THEIR**



**NEW YEAR'S EVE
CELEBRATIONS**

SATURDAY 31 DECEMBER 2016

Club opens at 5pm

6:30pm Smorgasbord meal

Including: ham, chicken, sausages, salads & desserts

7:30pm MIXED SOCIAL BOWLS

under lights, casual dress (for those interested)

Prizes sponsored by



Beverley

\$12 per adult, \$6 per child (over 15)

*Part proceeds of the night go to the cancer council via
our bowl over cancer sponsorship*

*For catering purposes please have NAMES ON THE
BOARD BY Wednesday 28th December
or contact*

Mens Captain: Greg (0429 952 644)

Ladies Captain: Glenys (0417 910 723)

Secretary: Jo (0438972335)

See you there



THE BLUE LINE

Beverley Police Station

57 Hunt Road, Beverley WA 6304 BeverleyPol@twitter.com
Phone: 9646 3333 Crime Stoppers: 1800 333 000

Hello Everyone,

DRUG ABUSE

Drug abuse is a disease - the compulsive misuse of illegal drugs, prescription medications and psychoactive substances due to medical or non-medical reasons.

Drug abuse is unwarranted, patterned consumption of any natural or synthetic substance or drug in an unapproved quantity for performance enhancement and psychological effect for non-therapeutic, non-medical use by an individual with methods neither approved nor supervised by medical professionals.

The negative consequences of drug abuse affect not only individuals who abuse drugs but also their families and friends, various businesses, the wider community and government resources.

Children of individuals who abuse drugs are abused or neglected as a result of the individual's preoccupation with drugs, they put their needs to obtain and abuse drugs before the health and welfare of their children.

The economic impact of drug abuse on businesses whose employees abuse drugs can be significant. While many drug abusers are unable to attain or hold full-time employment, those who do work put others at risk, particularly when employed in positions where even a minor degree of impairment could be catastrophic. These employees sometimes steal cash or supplies, equipment and products that can be sold to get money to buy drugs.

Drug addiction can become an expensive affair often resulting in people addicted to drugs trying anything from selling household goods to illegal activities like theft, robbery and even prostitution, to secure money to get their next dose.

Drugs can increase the likelihood of violent behaviour. Drug-induced violence can lead to serious injury to the drugs users and to others. Serious crimes like murder and rapes could be committed unknowingly under the influence of drugs.

It is my experience that one of the hardest things for a family living with an addict, is to stand by and watch a family member self-destruct, regardless of all the love and support you give them. Sadly, more often than not, until a drug addict decides for themselves to seek help and make the change there is little that can be done.

Early intervention is one of the key areas being looked at to prevent the transition of a young person into regular and dependent drug use; earlier intervention strategies to stop young people trying drugs in the first place need to be part of the solution.

The ability to successfully deal with and bounce back from life's challenges is known as resilience. An important factor in resilient communities is strong networks and social capital (the quality of relationships between members of a community).

Communities can create a sense of connectedness, provide social and support networks and opportunities to participate in and contribute to society. These are some of the "protective factors" that can moderate the effects of "risk factors" that place people (particularly young people) at increased risk of drug and alcohol misuse.

DJ YATES

Authentic Heritage Restoration

BRICK AND STONEMASONRY RESTORATION
AUTHENTIC REPOINTING OR MORTAR RISING
DAMP RECTIFIED
PROPERTY MAINTENANCE

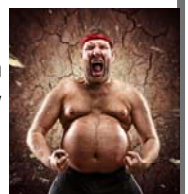
PHONE DAVE 0419 041 542



GYM MEMBERSHIPS

Now is the perfect time to get your gym membership.

Available now from the Shire of Beverley office.





THE BLUE LINE

Beverley Police Station

57 Hunt Road, Beverley WA 6304 BeverleyPol@twitter.com

Phone: 9646 3333 Crime Stoppers: 1800 333 000

The more protective factors in a person's life, the more resilient they will be and the less likely they will be to engage in problem behaviours such as school avoidance, violence and drug taking.

This means that belonging to a strong, resilient community can help to build resilience in young people. This can further help to reinforce the community's social capital and resilience.

We all have a part to play in the battle against drug abuse. Our role as law enforcement officers will always be reactive, we have little control over how/when a person makes that choice to try a prohibited drug for the first time. Early intervention is the key.

In the mean-time, I assure you that we are well aware of those in the Beverley community that choose to abuse drugs and we actively target these individuals. I encourage each and every one of you to continue to provide use with whatever information you have into this illegal activity; together we can make a big difference to curb drug abuse in Beverley. This information is best captured by phoning Crime Stoppers on 1800 333 000.

ROAD RIBBON FOR ROAD SAFETY



Road Ribbon for Road Safety®

20 November 2016 - 6 January 2017

By sending this e-Ribbon you are helping to raise awareness of road safety in Western Australia.

www.roadwise.asn.au

TOWARDS ZERO
getting there together

It was good to talk with a number of you on Saturday 19th November at our Road Ribbon for Road Safety display to raise awareness of road safety this festive season. We encourage and remind your family and friends to:

- Turn off mobile phones before driving
- Adapt their speed for the weather, light, traffic and road conditions
- Belt up when travelling in a vehicle
- Take a break, have a rest or if possible swap drivers to avoid the onset of fatigue
- Arrange a skipper, organise public transport, or stay overnight if planning to drink

We will also be distributing road ribbons during our vehicle stops in our efforts of working toward a fatal free Christmas.

On that note, we wish you a very safe Christmas and happy New Year.

Take care and stay safe.
Sergeant Karen Berry.



Marcell's Cleaning

- * Domestic or Commercial * Move In / Move Out
- * End of Lease - Bond Recovery * Spring Cleaning
- * Weekly * Fortnightly * Offices * One-Off Cleans
- * Gift Vouchers * Rubbish Removal * Gutter Cleaning
- * Gardening * Prompt and Professional Service

Steve Thornton
0429 312 057

Beverley & Surrounding Areas



VALLEY FORD

- NEW & USED VEHICLES •
- SERVICE & PARTS •

9622 5588
www.valleyfordnortham.com.au

Cnr Peel Tce & Fitzgerald St, Northam

How do PCs, Tablets and Smart Phones work?

Many people are confused about how PCs, tablets, smart phones work so I'll explain the main features. Next month I'll explain how the Internet and its main applications work.

PCs, tablets and smart phones all have the same basic structure, although the look and feel (particularly the size and screen layout) may be very different. I will just call them all computers and point out key differences where necessary.

Computers have three main parts:

- Hardware + Software + Peripherals

Computer hardware

There are three main parts of the electronic hardware

- Processor + Memory + Peripheral devices

The Processor does all the work based on instructions from computer programs (see below). The faster the processors and more things it can run in parallel the faster the computer will be. PCs tend to have faster and more powerful processors than tablets or phones.

Fast Memory is attached closely to the processor and used to store programs and data which the processor is currently using. The more memory the faster the computer.

Peripheral devices are used to communicate with the outside world, e.g. to the screen, keyboard, mouse, hard drives, mobile radios, WiFi, USB ports etc. Peripheral devices are controlled by the operating system.

Computer software

There are four main parts of the computer software

- Operating System + Device Drivers
- Programs + Files

The operating system (OS) is closely coupled with the computer hardware and controls its operation. The OS runs all the user's programs and all background programs. Different computers have different operating system which is why they look and feel so different. The major operating systems on user's computers are:

- Microsoft Windows on PCs (Windows is also available for tablets and smart phones)
- iOS on Apple PCs, iPads and iPhones
- Google Android on most tablets and smart phones

Device drivers are a part of the operating system software that runs all the time in the background providing the software interface to the peripheral devices. These are usually invisible to the user and are updated automatically.

Programs (also called Applications or Apps) do the computing work and are controlled by the user and the operating system. Examples of programs are:

- Internet Browsers (e.g. Internet Explorer, Edge, Google Chrome, Safari, Firefox)
- Microsoft Office (Outlook, Word, Excel, etc.)
- Music/video players (iTunes, Windows Media Player, VLC, etc.)
- Utilities (printers/scanners, pdf readers, etc.)
- Virus protection

Files are where computer programs store all the information they use or create. The OS and the programs are also stored on files. Files are usually kept on an internal or external hard drive on a PC, or in memory on a tablet or smart phone.

DISCLAIMER: Community information provided in good faith by Beverley IT. **Shire of Beverley accepts no liability for the content of this article**

I'll come to you - Serving Beverley, Brookton, York & district

- Can't find your files?
- Windows 8 & 10 a mystery?
- Virus or security worries?
- Printer, WiFi or Internet set up?
- Need Microsoft Office help?
- Mobile reception poor on your farm?



45 years experience in Computing, Internet & Telecoms;
Word, Excel & PowerPoint expert

Contact: Peter the Comm IT Man

Tel: 0419 949 604

peter@beverleyit.com.au

BROOKTON PLUMBING

ABN: 37 675 595 336

**FOR ALL YOUR
PLUMBING MAINTENANCE
AND GAS FITTING NEEDS**

***PLUS SEPTIC WASTE
REMOVAL**

PHONE:

**SEAN 0413 480 543 or
NATASHA 0422 013 889**

PL: 7130 GF: 006947 SWR: T235



BARCLAY BOOKS



Clayton & Barbara wish everyone
a safe & happy festive season.

Open Thursday – Sunday, 9am – 5pm

Old Fire Station, 151 Avon Tce, York

info@barclaybooks.com.au

9641 1665

barclaybooks.com.au



The Beverley Agricultural Society

Would like to wish the
Beverley community
a very merry Christmas
and a

safe and Happy New Year
2017 show day is going
to be bigger and
better than ever.

“Paddock to Pantry”

**Saturday 19 August
Save the date!**



VALENTI LAWYERS
PROPERTY & COMMERCIAL LAWYERS



Valenti Lawyers will be at the Quairading Community Resource Centre on Wednesday 14 December 2016 from 10.00am to 5.00pm to take instructions in relation to estate and succession planning, property and commercial matters.

Any person wishing to obtain advice in any of these matters should contact our Kim Valenti's personal assistant, Simone Poor, on (08) 9224 6222 to arrange an appointment or feel free to call in on the day.

Please visit our website www.valentilawyers.com.au

Level 2, 130 Royal Street, EAST PERTH WA 6004
PO Box 6661, EAST PERTH WA 6892
Tel: (08) 9224 6222 • Fax: (08) 9224 6288
www.valentilawyers.com.au

E Squire Contracting Services

Water Supply
Windmills & Accessories
Solar Pumps:
Sales, Service, Installation
Fencing & Yards
Trenching & Poly Pipe Laying

E Squire Contracting Services
Beverley and surrounding districts

Phone: 9646 0800

Errol Squire 0438 682 687

**ROYAL ANTEDILUVIAN ORDER
OF BUFFALOES**



GLE (Inc)
QUAIRADING BEVERLEY NO.163

We meet the first Wednesday of
every month at the Masonic Lodge,
Hunt Road, Beverley

*The objects of our order are
Philanthropy and Good Fellowship.*

For more info contact
Tom 0419 945 240



Anglican Parish Beverley/Brookton

Times for services for:

DECEMBER 2016

DAY	CHURCH LOCATION	TIME		SERVICE
		am	pm	
Sunday 4th Dec	St. Mark's Brookton	8:30am		Prayer, Praise, & Proclamation
Sunday 4th Dec	St. Mary's Beverley	8:30am		Morning Prayer
Sunday 4th Dec	St. John in the Wilderness, the Dale	9:00am		Prayer, Praise, & Proclamation
Sunday 11th Dec	St. Mark's Brookton	8:30am		Prayer, Praise, & Proclamation
Sunday 11th Dec	St. Mary's Beverley	8:30am		Morning Prayer
Sunday 18th Dec	St. Mark's Brookton	8:30am		Prayer, Praise, & Proclamation
Sunday 18th Dec	St. Mary's Beverley	8:30am		Morning Prayer
<u>Saturday 24th Dec.</u>	St. Mary's Beverley		6:00pm	Holy Communion
Sunday 25th Dec	St. Mark's Brookton	8:30am		Holy Communion
Sun 1st Jan 2017	St. Mark's Brookton	8:30am		Prayer, Praise, & Proclamation
Sun 1st Jan 2017	St. Mary's Beverley	8:30am		Morning Prayer
Sun 1st Jan 2017	St. John in the Wilderness, the Dale	9:00am		Prayer, Praise, & Proclamation

Telephone contacts: Beverley - 9641 6023 or 9646 0522

Brookton - 9642 1373 or 9642 2357

All mail including St. Mary's Society please address to:

P.O. Box 292, Beverley.

BEVERLEY CHRISTIAN FELLOWSHIP

Bible study

Monday evening at 7.30pm
followed by supper and a time
of caring and sharing fellowship
place alternating homes

Visiting Pastor from independent
ministries

SWOT (South West Outreach Team)
1st Wednesday of the month
10.00am

Place 16 Barnsley Street, Beverley

Enquiries
9646 0282 or 9646 0546

BEVERLEY HOME CHURCH

Meet 1st and 3rd

Saturday of each month

meeting at 3.30pm

Fellowship meal at 6.00pm

followed by a games night

16 Barnsley Street,

Beverley

Enquiries - 9646 0546



CATHOLIC CHURCH

Service in Beverley
8:00 am every Sunday at
Beverley Sacred Heart Church
Lukin Street, Beverley



THE RELIGIOUS SOCIETY OF FRIENDS (QUAKERS)

Beverley Friends Meeting
Old Catholic School Rooms
Dempster Street

Sunday 10:30am -
Meeting for Worship

For more information & enquiries
phone 9646 0575.

BEVERLEY REAL LIFE CHURCH



Doing
Life
With
Christ

10am
SUNDAYS

Meeting in the old Oasis church building.

50 Hunt Rd, Beverley

Bring and Share lunch - each week

Meals on Wheels DECEMBER 2016

Dec 01 V McKelvie
Dec 02 S Negus

Dec 05 B Foster
Dec 06 B Sims
Dec 07 G Courtney and M Alford
Dec 08 G Redding
Dec 09 P Smith

Dec 12 J Howell
Dec 13 K Badger
Dec 14 A Elston
Dec 15 G and P Burns
Dec 16 G Tasker

Dec 19 A and K Boyle
Dec 20 R and G McCallum
Dec 21 S Eramiha
Dec 22 M Smith
Dec 23 Staff member

Dec 26 PUBLIC HOLIDAY
Dec 27 PUBLIC HOLIDAY
Dec 28 D and E White
Dec 29 S Negus
Dec 30 B Wauchope

Jan 02 PUBLIC HOLIDAY
Jan 03 B Sims
Jan 04 G Courtney and M Alford
Jan 05 G Redding

Merry Christmas to all of
our volunteers.



The Church of
United Spiritualism

Please contact Rev Irene
on 9646 0470 for details.

DRUG & ALCOHOL COUNSELLING

The Wheatbelt
Community Drug
Service Team will
be visiting
Beverley Hospital
fortnightly.

For appointments please phone
Jackie Darby on
96211 055.

Beverley Earthmoving Contractors

40 years experience in all aspects of Earthmoving.

One stop shop for all your Septic Systems.

Supply & Install
Plumbing Licence PL 5829 Gas Fitting Licence GF 7422

ALL ASPECTS OF EARTHMOVING

House Pads Site Cuts
Block Clearing Laser Levelling
Service Trenches
To Shire and engineer specifications.

SAND SUPPLIES

Metal Gravel

BULK HAULAGE

Truck and Dog Trailer Backhoe 315 SE John Deere

Side Shift Extender Hoe

Bob Cat Loader

Forklift Post Hole Borer

General Freight ingage and over width loads
credited.

Phone:
Ron 0429 088 689

BOARDING OPTION FOR HIGH SCHOOL STUDENTS IN PERTH Rotary Residential College



WITH **EXCELLENT AMENITIES** AND **CLOSE TO THE CITY** THE COLLEGE OFFERS STUDENTS:

- ✓ Private rooms with ensuite bathroom
- ✓ Fantastic location
- ✓ Wifi throughout the college
- ✓ Nutritious meals
- ✓ Close to shops, public transport and local Sporting clubs
- ✓ Ovals, basketball courts and the use of swimming pool
- ✓ Weekend excursions
- ✓ Recreation room
- ✓ Multi study room
- ✓ Gymnasium
- ✓ Computer room
- ✓ Music/Dance/Ballet room
- ✓ Aviation room
- ✓ Dining room
- ✓ Laundry
- ✓ Onsite managers
- ✓ Fully trained and experienced staff
- ✓ Extensive CCTV and security system
- ✓ Financial assistance if eligible



We look forward to seeing you at Rotary Residential College

Please contact management on (08) 94704177 or
EMAIL admin@rotaryresidentialcollege.com.au



D'Arcy Slater and Foundation Cup

The D'Arcy Slater and Foundation Cup tournaments were held in Bunbury in early November. These competitions bring together junior players from regional areas around the state to compete for an opportunity to represent regional W.A in an interstate competition in January. Many junior players from Beverley were selected to represent the Central Districts region. These players along with their parents travelled to Bunbury to compete. Three players from Beverley won themselves an opportunity to play in Adelaide. Congratulations to **Annaliese Mellick, Grace Fisher and Sam McLean**. The children of the Central Wheatbelt competed exceptionally and represented our part of the state with dignity and the utmost sportsmanship.

SINGLES HIGHLIGHTS

Grace Fisher: Foundation Cup 13 & under singles Winner

Annie Mellick: Foundation Cup 13 & under singles Runner up

Sam McLean: D'Arcy Slater Cup 13 & under singles Semi finalist

Ella Cooke & Angela Stokes singles Quarter finalist

Rebekah Aynsley: Consolation Singles Runner- up



Central Districts

Girls Team A

Grace Fisher
Annie Mellick
Angela Stokes
Rebekah Aynsley

Overall Result
1st Winners of A Division
FOUNDATION CUP

Central Districts

Girls Team B

Pheobe Caporn
Abbey Cooke
Bronte Cleland
Kaitlyn Shaw

Central Districts

Girls Team C

Grace McLean
Zoe Shaw
Sophie Kilpatrick
Ella Cooke

Central Districts

Boys Team A

Sam McLean
Declan Kilpatrick
Hamish Brown
Anthony Waters

Central Districts

Boys Team B

Hamish Fulwood
Mitchell Ashworth
Tom Mellick
Thomas Leeson

Finished 4th overall and
Winners B Division

Finished 5th overall and
Runners – Up B Division

Finished 5th A division

Finished 12th overall 4th B Division



The CBH Ladies Open Doubles Tennis was played on Wednesday 23 November with 62 players from Pingelly, York, Quairading, Beverley, Wandering, Mundaring, Helena Valley, Bull Creek, Cunderdin, Northam, Roleystone and Sorrento enjoyed some great tennis even though the day was quite hot.

A wonderful chicken and champagne lunch and an equally scrumptious afternoon tea was provided by club members – maintaining the usual high standard Beverley is proud to offer. A very special thank you to kitchen volunteers – Mary, Delys, Leita, Jane and Anto and to our bar man John. Rob de Gruchy our amazing green keeper worked extra long hours the night before the competition mowing and marking the courts under lights – such dedication.

Other sponsors on the day, along with CBH, were Healthways, Jane Murray and Zanthorrea Nursery. Our local shops “Lucky Find” and “Unique State” set up pop-up shops and also donated items to the raffle. The shops looked great and many purchases were made.

RESULTS

<u>Grade</u>	<u>Winners</u>	<u>Runners Up</u>
A	Kirsten Arthur and Cathy North	Rheannon Turton and Jodie Marshall
A Res	Britanny Norrish and Carol Dall	Judy Smith and Sharon Jasper-Beach
A Res	Alyssa Lee and Megan Pauley	Fi Fisher and Anne Cleland
B	Robyn Campbell and Janine Larkin	Vye Seagrim and Shirley Jensen
C	Sheree Blechynden and Jess Overington	Emma Hardie and Frances Haslam



A full house for presentations and afternoon tea



All smiles after some great tennis
Ali, Zoe, Megan, Ali, Fi, Tania and Anne

Beverley District High School
Students last day of the 2016 year will be on Thursday 15 December 2016.
All students return to school on Wednesday 01 February 2017.



www.beverleytennisclub.com



Keys for Members

If you are a member of BLTC and would like to access the courts outside of scheduled fixtures please contact one of the following members to organise keys.

Alex Kop: 0429 370 973

Sandy Shaw: 0417 703 373

Richard Boladeras: 0408 812 349



Subs are now overdue. Please advise treasurer if payment is made via EFT.

alisonedwards3@bigpond.com

BSB: 016-540 ACC: 110201399

Senior: \$100

Junior: \$30 (15-17 years)

Sub Junior: \$20 (under 15 years)

Social Membership: \$30

LEW & SANDY SHAW MIXED HANDICAP DOUBLES

Held Sunday November 06 2016

A warm but windy day saw 16 pairs take to the courts for this tournament. Players competed in 3 groups with the winners of the largest group taking a place to compete in the Grand Final.

SEMI-FINAL

D. Hagen & A. Budiselik v K. Murray & Ali Edwards

GRAND FINAL

R. de Gruchy & E. Miller v D. Hagen & A. Budiselik

WINNERS

R. de Gruchy & E. Miller 6-3

Many thanks to Lew and Sandy Shaw, who were on hand to assist with presentations, for sponsoring the day. Players were able to enjoy delicious spaghetti afterwards organised by Megan Vandenberg and her happy helpers. Thanks everyone for a fantastic first tournament.

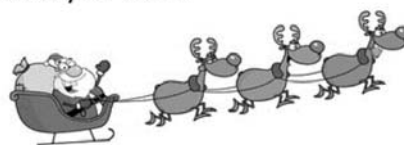


Chris Boladeras Memorial Trophy & Christmas Wind-Up

Sunday 18 December

Names due to captains by Wednesday 14 December

Start time TBC. BBQ dinner, please bring a salad to share and don't forget to add a little bit of Christmas to your outfit!



DECEMBER			
SAT	3rd Dec	Pennant Tennis	Beverley v Dowerin in Bev
SUN	4th Dec	Sunday Social Tennis from 2pm	
WED	7th Dec	Ladies Midweek Tennis	
SAT	10th Dec	Pennant Tennis	Beverley v Meckering in Bev
SUN	11th Dec	Sunday Social Tennis	
WED	14th Dec	Ladies Midweek Tennis	Finals and Windup
SUN	18th Dec	CHRIS BOLADERAS MEMORIAL TROPHY – DRAW FOR PARTNER-CHRISTMAS WINDUP START TIME T.B.C	NAMES DUE IN WED 14 DEC. BBQ DINNER, BRING A SALAD TO SHARE
JANUARY			
SUN	ALL JAN	Sunday Twilight Tennis 4.00pm Start	Please contact Captains or a Committee Member and watch FACEBOOK for updates

Captains: Graeme 0414731338, Ali 0417 947 955 or 9646 0906

Vice Captains: Chad 0400 431 738, Emily 0437 464 078

Beverley Bowling Club

What a busy couple of months it's been down at the Beverley Bowling club.

The Glenys and Russel Hastings opening day was held on Sunday 02 October 2016 and 6 teams participated. The winners were Geoff Bremner, Sheldon Petchell, Jo Copping and Lyn Wilkinson with Peter Fleay, Lyn MacTaggart and Ron Napier runners up. It was a good day had by all and the Beverley Bowling and Croquet Club will dearly miss Russel.

The Beverley Ladies Gala Day was held on Sunday 09 October with 10 teams. The winners were Sian Smith, Dianna Lengkeek, Norma Berry and Maxine Watts from York and the runners up were Glenys Hastings, Jodie Bell, Jo Copping and Verna McKelvie-Wilson from Beverley.

On Sunday 16 October the Byfields Handicap Men's Singles were played and the winner from the 16 players was Sheldon Petchell with the runner up in Peter Fleay.

The Freemasons Tavern Championship Men's Pairs was held on Sunday 23 October the eventually winners from 8 teams, were Louis Irvine and Don Minchin from Greg Barrett-Lennard and David Overington.

On Sunday 06 November the Avon Trading Championship Mixed Pairs were held and from the 8 teams the winners were Brad and Jo Copping from David and Jodie Bell.

Men's and Ladies Pennants Results:

	<u>Mens 1st Division</u>	<u>Mens 2nd Division</u>
15 Oct	Beverley (6) V Goomalling (2)	Beverley (0) V Dowerin (8)
22 Oct	Beverley (7) V Northam (1)	Beverley (1) V York (7)
29 Oct	York (8) V Beverley (0)	Beverley (6) V Toodyay (2)
05 Nov	Beverley (1.5) V Dowerin (6.5)	Goomalling (0.5) V Beverley (7.5)
12 Nov	Beverley (7) V Meckering (1)	Beverley (1) V Northam (7)
19 Nov	Toodyay (7.5) V Beverley (0.5)	Dowerin (7.5) V Beverley (0.5)

Ladies:

04 Oct	York Gold (2) V Beverley (2)	
18 Oct	Beverley (1) V Dowerin (3)	Goomalling Blue(4) V Beverley (0)
25 Oct	Beverley (4) V Bolgart (0)	
02 Nov	Beverley (3) V Northam Blue (1)	
15 Nov	Goomalling White(4) V Beverley (0)	Beverley (2) V York Blue (2) (heat out)
22 Nov	Northam Red (3) V Beverley (1)	

Upcoming events are:

We had scheduled the Christmas Party for Sunday 11 December but due to the late harvest this year it has been decided to combine the day with the New Years Eve celebrations. Instead of lunch it will now be a dinner. Saturday 31 December Beverley Bowling Club New Years Eve Celebrations sponsored by Elders (page 47).

Look out in January we are hosting the Inter League Round Robin on Friday 06, Saturday 07 and Sunday 08 January. Teams from Avon Valley Bowling League, East Avon Bowling League, Central Wheatbelt Bowling League, Goldfields Unified Bowling League and South Eastern Bowling League will be playing. So you will have to come down and have a look at the best bowlers of the Eastern Zone.

Photo left: Champion pairs Louis Irvine and Don Minchin with the Cyril Carr Trophy.

Photo right: Champion Mixed Pairs Brad and Jo Copping with Vicki Jenkin from Avon Trading.



**BEVERLEY
LANDFILL SITE**

NEW OPENING HOURS

Saturday 8.00am – 4.00pm
Sunday 8.00am – 4.00pm
Monday 8.00am – 3.30pm

**CLOSED
Christmas Day
and
Total Fire Ban Days**

**PLEASE NOTE
MONDAY'S EARLIER
CLOSING TIME**

**AVON DRILLING
SERVICE**

**Mick Lewis
Mob: 0427 814 055**

**WATER BORES
BORE DEVELOPMENT
MINI EXCAVATOR HIRE
POST HOLE DRILLING**

BILL CHAMBERS

**Chartered Accountant
&
Registered Tax Agent**

Tax return preparation

Financial and accounting
advisory services

Office hours:
Wednesday
9.15am - 5.00pm

129 Vincent Street, Beverley
9646 1566 (Monday - Friday)



BEVERLEY FOOTBALL CLUB

The Beverley football club would like to thank all those who are involved in the harvest of the footy club crops. We really appreciate the effort you have put in throughout the year to make this a successful harvest.

The Beverley Football Club Social Committee requires the services of an enthusiastic coordinator to manage and facilitate the operation of our Canteen for our seven home games in season 2017. The Social Committee acts as one of our Club's strongest resources and it is our wish with your valued assistance that this continues to be successful. Please contact Jezz Barrett-Lennard on 0417 966 249. Details on our League and A Reserves Coaching appointments will hopefully be published in the January 2017 edition of the Blarney.

We would also like to wish all our players, members, supporters and volunteers a safe and merry Christmas with your families and look forward to seeing you all again in the new year.



**BEVERLEY & SURROUNDING AREAS
LOCAL OWNER DRIVER DAVID JOHNSON**

**MERRY CHRISTMAS AND HAPPY NEW
YEAR TO ALL THE CLIENTS FOR
YOUR SUPPORT, BRING ON 2017.**

Phone: 0428 995 950

Email: gameoncontracting@gmail.com



Beverley Cricket Club

The Beverley Inkosi Design Redbacks once again has a young side and with a few old boys is looking forward to a successful season. Beverley has lost 6 players from last season. Beverley's first game for the season was against Brookton in Brookton.



Saturday 22 October 2016

Beverley All Out for 137 lost to Brookton All Out for 147

Beverley Batting: Dale Wansbrough 35, James Adams 33, Khyle Ugle 18

Brookton Bowling: Cliff Hartl 2 for 8, Roy Yarran (Snr) 2 for 15

Brookton Batting: Damien Rushton 55, Craig Allington 21

Beverley Bowling: Dale Wansbrough 4 for 10, Khyle Ugle 2 for 36, Josh Sattler 1 for 10

Beverley's game on Saturday 29 October 2016 was against the very strong and last year's premiers in York at York but unfortunately had to forfeit due to a lack of players.

Saturday 05 November 2016

Beverley All Out for 74 lost to Seabrook 8 for 202

Beverley Batting: Stephen Gollan 21 not out, Troy Granville 20

Seabrook Bowling: Troy Seaman 3 for 5, Hayden Fancote 3 for 15

Seabrook Batting: Mitch Green 53 retired, Hayden Fancote 52 retired, Steve Waineright 46

Beverley Bowling: Owen Marsh 5 for 30, Stephen Gollan 1 for 7, Lenny Ugle 1 for 18

Sunday 13 November 2016

Beverley All Out for 136 lost to Tammin 6 for 160 declared

Beverley Batting: Stephen Gollan 42, Owen Marsh 19, Dale Wansbrough 18

Tammin Bowling: Nick Taylor 2 for 26, Cory Dixon 2 for 28

Tammin Batting: Scott Button 33, Clint Nicholls 27, Isaac Stokes 22 retired

Beverley Bowling: Stephen Gollan 2 for 6, Dale Wansbrough 2 for 38

Sunday 20 November 2016

Beverley All Out for 120 lost to Quairading 9 for 195

Beverley Batting: Mark Thomas 30, Stephen Gollan 21 not out, Karl Gillespie 14

Quairading Bowling: Glen Haythorntwaite 3 for 12, Liam Want 3 for 24

Quairading Batting: Brendan Simpson 61, Liam Want 38, Reece Bland 32

Beverley Bowling: Shaq Thorne 3 for 6, Stephen Gollan 2 for 12

Upcoming Fixtures

Sunday 04 December

Beverley vs. York

Beverley

Sunday 11 December

Beverley vs. Brookton

Beverley

Sunday 18 December

Bye

Saturday 28 January

Quairading vs. Beverley

Quairading

If you are interested in playing cricket this season Beverley has training on Friday nights at the Recreation Ground commencing at 5.30pm.



**Beverley
Triathlon**

Prizes to be
won plus a
Pool Party

Saturday 18 March 2017

**NO
EXCUSES
START
TRAINING
NOW!!**

★Swim★
LIKE THE BOAT SUNK
★Cycle★
LIKE YOU STOLE IT
★Run★
FOR YOUR LIFE

Beverley Horse and Pony Club

The club held our last fundraiser for the year, the Open Fun Day on the 9th of October. It was a great day out with riders competing in hacking, show jumping, handy pony and novelties. This is the second year running this event and it almost doubled in size. It is great to see the support of rider near and far. Well done to all that competed you all showed fantastic sportsmanship and we hope to see you back again next year.

Our final rally for the 2016 season was held on the 16th of October, unfortunately we had to reshuffle our rally schedule the night before but we managed to make it work. The day started as usual but finished with some fun; the Miniature and Shetland group combined to go on a scavenger hunt; while the Warmblood and Arabian group did a musical ride together. We wish club coach Margaret Marwick a speedy recovery from her horse riding fall and we hope to see you back coaching again soon.

Bronte Cleland and Tealah Hawke visited Dryandra Pony Club for a school holiday camp during October and after two days at camp they sat their C Certificate there. I am pleased to report that they both passed the examination. Well done girls on all your hard work in the lead up to the exam, you should be proud of yourselves.

The 2016 season was Jessamin Pain's last year as a riding member at the club. We hope that we'll see her around the club next year in a coaching roll. Well done on all your hard work around the club and on your horse "Playboy". Good luck with all your future horing endeavours.

November 6th saw our Pony Club Wind Up which was held at the Naval Base Beach. The members enjoyed a chance to take their horses swimming. After a morning of swimming we had a lovely lunch and sweets afterwards. Riders received certificates recognising their efforts over the year. Those members who have been out representing the club received certificates as a record of their achievements. The major award recipients were as follows:

Clean and Tidy Award:

- 1st Aaron Schultz
- 2nd Jessican Maxwell
- 3rd Teleah Hawke

Most Improved Jumper:

Jessica Maxwell

R/Up Most Improved Jumper:

Not Awarded

Club Person Of The Year:

Jessamin Pain

Thank you to our wonderful members for another fantastic year. We are looking forward to see all your smiling faces back next year. Please keep an eye out for our AGM information. Wishing you all a safe and happy festive season.

Happy riding
Bush Possum



PRIMARY HEALTH SERVICES

Available to the community of Beverley

You can refer yourself or your child to the following health professionals:

Child Health Nurse - 9646 3200
to make an appointment, Hospital Admin Staff will assist you in setting an appointment time, which will be on most occasions a Monday.

School Health – 9641 0200

Dietetics – 9690 1320

Occupational Therapy - 0429 466 224

Physiotherapy – a **Doctors referral is required** – Please send all referrals to P.O Box 140 Beverley or drop them into the Beverley hospital. All referrals are forwarded onto to Northam Hospital where they are prioritised and wait listed. Clients will be acknowledged with a letter informing them of the approximate wait time and will be seen in Beverley

Podiatry – a **Doctors referral is required**

Please send to PO Box 142, Beverley or drop referral to the Beverley Hospital (attendance Fridays) **

Social Work – Phone 9690 1320

Speech Pathology – Phone 9690 1321

- Services are provided at the Primary Health Building, on the corner of John and Forrest Streets, Beverley. There may be a waiting time for services.

- These services are provided by WA Country Health Service and are free of charge. (Please note that the Podiatry Service is a private practice and is not free of charge - there is a fee at first consultation but the WACHS/Beverley Health

Service do not get involved in taking fee payments – only assisting at receiving the referrals for appointment. The Doctor's referrals are usually faxed to the service provider, Como Podiatry, who contact the patient by phone and make an appointment).

- If you have any concerns about your own health or your child's health and development, please phone the relevant health professional to discuss your concerns. Alternatively, you can speak to the Child Health or School Health Nurse, or your GP, to discuss your concerns and to determine the most appropriate referral.

*Avon & Central Primary Health
Promoting Healthy Lifestyles*

**In Memory Of
Roberta Fleay
1923 - 5/11/2016**

Mrs Roberta Fleay or "Bobbie" as she was more affectionately known, was born in Merredin, Western Australia. Bobbie started her riding career early and when World War II reached Australian shores, Bobbie joined the Red Cross Mounted Transport at the age of 17. This unit was originally established to provide a transport service for messages and first aid in the event of an air raid.

Bobbie married in 1954 and spent her early married years in the Oakover Homestead, originally built in the late 1800's. During this time Bobbie threw herself into farming life at Oakover and enjoying life as a mother to Rosemary, David and Georgina. After living in "Oakover" Homestead in their early years together, Bobbie and her husband Nigel built their own home to the South East of the original Homestead.

Later in 1962 Bobbie and Mrs Lesley Barrett-Lennard established the Gilgering Pony Club between York and Beverley, combining riders from the two towns. Within two years the club had grown to 80 members, where it was decided to split the club into York Pony Club and Beverly Pony Club, with Bobbie taking on the role as Chief Instructor at the York Pony Club, a position which she was to hold for 31 years.

During this time the "Oakover Homestead" was used to conduct "Oakover Camps", which developed into one of the States premier riding camps that were attended by state-wide Pony Club enthusiasts. York Pony Club soon became renowned for leading the way in innovative practice under the guide of Chief Instructor Bobbie, with firsts such as Tetrathlon, Observation Rides and winning the State's First Prince Phillip Games. Bobbie was at the forefront of introducing Tetrathlon events into Western Australia.

Bobbie has contributed to the Pony Club movement over many years both at club and State level. She was a Life Member of York Pony Club, served on the PCAWA Council for many years and held varied roles within the Association including examiner, visiting commissioner, PCAWA President and Vice President.

Bobbie was awarded the Order of Australia Medal (OAM) in the Queen's Birthday Honours List 1988 for her Services to Youth and People with Disabilities in the field of Horse Riding. In 2012 Bobbie was awarded a PCAWA Service Award and in 2014, a WA Volunteer 50 Years of Service Badge. Both being recognition for her outstanding service and dedication to the Pony Club movement in Western Australia



**GREEDY
GECKO**
ECO PEST MANAGEMENT

*Termites • Rodents • Flies • Spiders
Mozzies • Bees • Roaches • Millipedes*

Safe + Effective + Affordable


*Specialising in the control
of common household pests*

**General
Insect
Treatments**
\$140
FROM
Inclusive


**Termite
Inspections**
\$190
FROM
Inclusive

1800 88 39 88
greedygecko.com.au

**JANUARY 2017
BLARNEY EDITION**
**The deadline for will be on Monday 19 December
at 4.00pm. No Late submissions will be accepted.**



northam optical



- Bulk billing to Medicare
- HBF & DVA Provider
- Competitive prices
- Great range of frames & sunglasses
- Locally owned and operated

www.northamoptical.com.au
138 Fitzgerald St Northam WA P 9621 1131
E northam.optical@yahoo.com.au

More on Late Stage Lyme Disease

Most Australia's are not diagnosed with Lyme disease until the disease has become chronic, also known as Late Stage Lyme disease. This is due to the medical profession being untrained and inexperienced in identifying the symptoms of Lyme disease. Additionally, local testing is also unreliable as a negative test result does not automatically exclude Lyme disease as it the majority of cases Lyme disease is a clinical diagnosis.

Symptoms and treatment information: The following treatment information is an extract based on an article entitled [Late Stage Lyme Disease, Patient Information](#).

- **Hallucinations and voices** - These can occur during times when your mind and body are exhausted but the toxins won't let you sleep. You may be trying to rest, but your brain gets stuck halfway between sleep and awake, dreams and reality mix. Better sleep at night, along with less activity during the day, should help these symptoms disappear. Ask your Doctor about sleeping aids you can use if necessary. However, if you get these symptoms while you're wide awake and have gotten reasonable sleep, consult your doctor immediately.
- **Tremors, shakes, and spasms** - Can occur in various places to varying degrees. The length of time they last varies as well. These may be caused by bacteria dying near, and hence irritating, a nerve which controls motion.
- **Sweats, hot, cold, day and night** - Get used to them. You might consider adding just a bit of extra salt to your diet so that you don't become salt/sodium deficient.
- **Fireworks, popcorn, or pin-cushion pains** - These tend to feel like someone has picked a part of your body and decided to jab it with a pin a few times. Then they go and pick another spot. These are probably just irritations of pain nerves, or perhaps bacteria dying inside a nerve itself. You might notice that they tend to occur in your most affected areas, and that more effective antibiotics cause more of them.
- **Heart palpitations or irregularities** - Notify your doctor immediately so that they can determine if the irregularities are severe enough to be dangerous. In some extreme cases, people have been put on a temporary pace maker until the worst of the symptoms have disappeared.
- **Dizziness and Vertigo** - It's everywhere else, why be surprised that it's in your ears? Symptoms here can range from a feeling of "walking through jello" to complete loss of orientation.
- **Temporary Amnesia** - Really this is just an extension of memory loss symptoms, except that instead of just losing your short-term memory, mid and sometimes long-term memory can go for a hike as well. These symptoms can last anywhere from just a few minutes, to a few weeks, and will probably only occur during the first month or so of treatment.
- **Aliens Under My Skin** - usually felt in the forearms or shins, but can occur anywhere, this feels for all the world like little turtle-shaped aliens crawling around in the affected area. These are actually associated with an attack by your own immune system against the bacteria, and are probably the result of localized swelling and toxin releases from the bacteria dying under the attack.

[Watch this space to learn more about Late Stage Lyme Disease](#)

PURSLOWE TINETTI
FUNERALS .com



Cremations & Burials

Country or City

Pre-paid Funerals

Call the Tinetti Family
9622 1411

Arranged in your home or
264 Fitzgerald St Northam



AUSTRALIAN
FUNERAL
DIRECTORS
ASSOCIATION

MOYLAN'S PLUMBING & GAS

ALL PLUMBING MAINTENANCE

Domestic • Gas & Hot Water • Backflow

TONY MOYLAN

Plumber

PL8253, GF012078, BF0690

Mob: 0411 869 762

Ph: 9641 1609

Email: moylanplumbing@westnet.com.au

Reliable & Professional Service

Competitive Rates

Pensioner Discount

Free Quotes



Canasta - Samba

If you are interested please come along to the CWA hall on Saturday afternoons at 1.00pm. Enquiries 9646 0457 or 9646 1271

KARRADALE LIVESTOCK TRANSPORT YORK LIVESTOCK TRANSPORT

ABN 64 054 007 721

We service Beverley, Brookton, York
& surrounding districts

Available to transport Sheep & Cattle

No job too big or small

Support the local communities

Member of ALRTA

If you need stock moved, Peter would love to
hear from you - 0428 481 281



Coming Events In Beverley

2016		
Saturday	03 December	RSL Indoor Markets
Saturday	03 December	Johnny Cash Tribute Show at Platform Theatre
Saturday	03 December	Kindy/Pre-Primary Christmas Concert
Thursday	08 December	Playgroup Christmas Party
Monday	12 December	BDHS Graduation for Years 6 & 10
Monday	12 December	Christmas Lights Competition - Judging night
Wednesday	14 December	BDHS Presentation Night
Saturday	17 December	Free Community Christmas Concert at Platform
Saturday	17 December	Dale River Tennis Club Christmas Party
Saturday	31 December	Beverley Bowling Club - New Years Celebrations
2017		
10 January	20 January	Beverley Soaring Society - State Gliding Comp.
Saturday	11 February	Barry Morgan Comedy Night at Platform Theatre
Saturday	18 March	Diner En Blanc at Platform Theatre
Saturday	18 March	Beverley Triathlon
Sunday	26 March	BHPC Show Jumping and Dressage Training Day
Sunday	02 April	BORMSA - Autocross
Thurs 13 April	Mon 17 April	49th Annual Easter Art Exhibition
Fri 14 April	Mon 17 April	Easter Lawn Tennis Tournament
Sunday	07 May	BORMSA - Autocross
Saturday	17 June	BORMSA - Motorkhana
Sunday	18 June	BORMSA - Khanacross
04 July	09 July	Senior State Motocross Championship Round
Saturday	08 July	BHPC Show Jumping Training Day
Sunday	16 July	BORMSA - Autocross
Sunday	20 August	BORMSA - Autocross
Saturday	16 September	BORMSA - Twilight Khanacross
Saturday	16 September	BHPC Annual Breed Show
Sunday	08 October	BHPC Gymkhana
Sunday	22 October	BORMSA - Autocross

*ADVERTISE YOUR EVENT HERE FOR FREE
EMAIL: blarney@beverley.wa.gov.au*

EDITION	DEADLINE DATE
DECEMBER EDITION 2016	WEDNESDAY 23 NOVEMBER 2016
JANUARY EDITION 2017	MONDAY 19 DECEMBER 2016
FEBRUARY EDITION 2017	MONDAY 23 JANUARY 2017
MARCH EDITION 2017	THURSDAY 23 FEBRUARY 2017

The flag was flown at half-mast on the Beverley Town Hall as a mark of respect to:-

- STRANGE, Kevin Richard Walter
- HASTINGS, Russel Clayton
- GROVER, Ronald James
- ALEXANDER, Margaret Edith
- JOHNSON, Peter John
- MOURISH, Letitia
- SING, Emily Muriel

DISCLAIMER

The information in this publication is of a general nature as a service to the ratepayer. The articles included herein are not intended to provide a complete discussion of each subject. While the information is believed to be correct, no responsibility is accepted for its accuracy. No liability is accepted for any statements of opinion or any error or omission.

BEVERLEY BLARNEY

1,100 copies each month

ADVERTISEMENT SIZE	COST (GST inc)
Size G: Full Page (A4)	\$170.00
Size A: 122 x 180 mm	\$89.00
Size B: 122 x 89 mm	\$ 44.00
Size C: 60 x 89 mm	\$ 27.00
Size F: 122 x 135 mm	\$ 67.00
Size D *: 5 lines	\$ 8.00*
Size E *: 3 lines	\$ 5.00*
Trading Post: 120 characters	\$3.00

We offer a special discount to
advertisers who pay for
12 months in advance.

Contact our friendly Shire staff today.

Community notices are free of charge

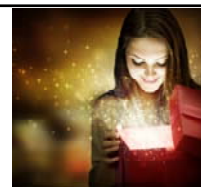
**The deadline for the next
Beverley Blarney is 4pm
Monday 19 December 2016**

Shire of Beverley
PO Box 20, Beverley, 6304
P: 9646 1200 | F: 9646 1409
E: blarney@beverley.wa.gov.au

Online editions: www.beverley.wa.gov.au



What's on in December 2016



Monday	Tuesday	Wednesday	Thursday	Friday	Saturday	Sunday
			1 Line Dancing Playgroup Ladies Social Bowls @ 6.30pm	2 RECYCLE BIN Op Shop Cricket Training	3 RSL Markets JOHNNY CASH & Co. TRIBUTE SHOW Platform Theatre Kindy/ Pre-Primary Christmas Concert Pennant Bowls Pennant Tennis Samba @ CWA	4 Bev vs York Cricket in town Social Tennis
5 Weight Watchers Bridge @ CWA Swim Club	6 POOL CLOSED Mens Shed HACC Quilting	7 HACC RAOB Ladies Tennis Ladies Social Bowls @ 6.30pm	8 Line Dancing Playgroup Christmas Party	9 Op Shop Cricket Training FRIDAY BINGO Lesser Hall	10 CWA Meeting and Christmas WIndup Pennant Bowls Pennant Tennis Samba @ CWA	11 Beverley vs Brookton Cricket in town Social Tennis
12 Bridge @ CWA Swim Club BDHS Graduation Year 6 & 10 Christmas Lights Judging Night DIRECTORY DEADLINE	13 POOL CLOSED Mens Shed HACC Quilting Brooking St Reserve Clean up day Ladies Pennant Bowls	14 HACC RSL Meeting Ladies Tennis BDHS Presentation Night	15 Line Dancing Ladies Social Bowls @ 6.30pm	16 RECYCLE BIN Op Shop Cricket Training	17 Dale River Tennis Club Christmas Party FREE Country Christmas Concert at Platform Theatre Samba @ CWA	18 Chris Boladeras Trophy & Tennis Club Christmas WIndup
19 Kids Craft Workshops at CRC BLARNEY DEADLINE	20 POOL CLOSED Mens Shed HACC Quilting COUNCIL MEETING	21 HACC	22 Line Dancing Ladies Social Bowls @ 6.30pm	23 Shire offices close @ 4pm	24 CHRISTMAS EVE Samba @ CWA	25 CHRISTMAS DAY <i>Merry Christmas</i>
26 BOXING DAY	27 PUBLIC HOLIDAY POOL CLOSED	28 HACC	29	30 RECYCLE BIN	31 NEW YEARS EVE Bowling Club New Years Eve Celebrations	HELLO 2017