



# BEVERLEY BLARNEY

Edition 439  
MAY 2021

No Charge



## NEIGHBOURHOOD CENTRE WEEK 2021

### WHAT A PILE OF COMPOST!



**MONDAY 10 MAY | 9.30AM TO 11.30AM | BEVERLEY COMMUNITY GARDEN**

This workshop will show you how to create your own compost pile, turning kitchen and garden waste into black gold.

### I SPLIT MY PLANTS



**TUESDAY 11 MAY | 9.30AM TO 11.30AM | BEVERLEY COMMUNITY GARDEN**

Propagate the plants you love! Whether your sharing or selling them or keeping them to grow your own garden, come and see just how easy it is!

### MMM..WHAT TO DO WITH YOUR POO



**WEDNESDAY 12 MAY | 9.30AM TO 11.30AM | BEVERLEY COMMUNITY GARDEN**

It's time to get stinky! learn how to mash up the perfect blended manure for your garden beds bring your own gloves.

### SQUIRM WITH THE WORMS



**THURSDAY 13 MAY | 11.00AM TO 1.00PM | BEVERLEY CORNERSTONE**

An interactive workshop to learn all about creating and maintaining a healthy worm farm so you can make your own liquid fertiliser.

### YOU SWAPPED WHAT?



**FRIDAY 14 MAY | 9.30AM TO 11.30AM | BEVERLEY CORNERSTONE**

Come and swap your plants, seedlings and seeds\* with other plant lovers. everyone is welcome to sit and have a chat - devonshire tea available.

Supported by:



## INSIDE COVER

## IMPORTANT INFORMATION REGARDING ANZ BANK CLOSURE



### **ANZAC Day 2021**

In light of the recent COVID lockdown, our town was very fortunate to hold ANZAC Day Services. Myself and other Councillors attended both the Dawn Service and Mid Morning Service run by the Beverley RSL. We also attended a fantastic service at Beverley District High School on Friday 23 April 2021.

Thank you to Shannon and his team from Hotel Beverley who provided this years Gunfire Breakfast and the mid-morning refreshments. The food and service was enjoyed by all.

### **ANZ Bank – Beverley Branch Closure**

Council are thoroughly disappointed at the recent advice received from the ANZ Bank about the September closure of our local branch. Previous to the closure, Council had contacted ANZ asking to reinstate our Beverley branch's original pre-covid hours. At the 27 April 2021 Council meeting resolved to appoint a consultant to provide a detailed submission to the ANZ Bank Melbourne regarding the proposed closure of the Beverley Branch of the ANZ.

There is a community feedback form in your postal box, we encourage all ANZ Bank customers to respond.

### **2019/20 Annual Report and Annual Electors Meeting**

The Audit & Risk Committee and Council received the Annual Financial Report at the 27 April 2021 Ordinary Council Meeting. The Annual Report is expected to be adopted at either a Special Meeting of Council or the Ordinary May Council Meeting. Once adopted, the Annual Electors Meeting can be held.

### **Avondale Machinery Farm**

Council are seeking urgent public comment from the community of the future of the Avondale Farm Machinery Museum. A report is available from the Shire Office or the Shires website. Public comment will guide Council on whether to keep the Museum, move it or walk away from it.

### **Shire Staff**

Lydia Ugle has joined the Shire Administration team on a one year contract to cover maternity leave. Lydia recently completed the Department of Transport training and will be able to assist with your licensing queries.

### **Local Government Elections – October 2021**

If you are interested in becoming a Councillor and running in the local elections in October 2021 please do not hesitate to have a chat with a current Councillor. Later in the year the Shire will hold information sessions that will cover training requirements, meeting expectations and legislative requirements. The Shire will also have a tent at the Beverley Show.

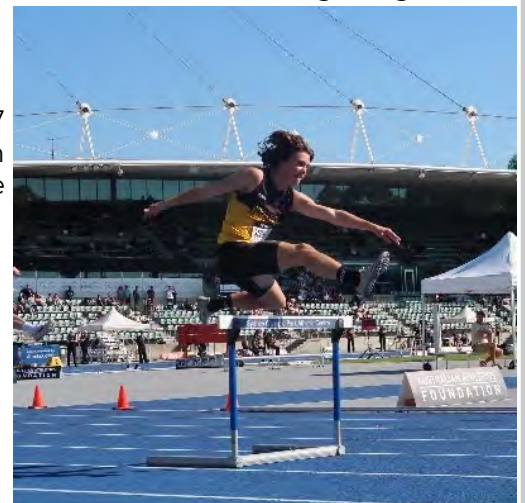
### **May Road and Construction Works**

Work will soon commence on Morbinning Road shoulders which will include the intersection with Caroling Bally Bally Road. Dale Bin North Road has an allocation of 1.8km of gravel sheeting that is currently being carried out on the northern end which had deteriorated from the cartage of gravel to Edison Mill Road.

### **Cody Stanfield**

Congratulations to Cody Stanfield who recently won the U17 400m Hurdle Final with a time of 56.18 sec at the 2021 Australian Athletics Track and Field Championships in Sydney to become the National Champion. Well done Cody!

**Cr Don Davis  
Shire President**





## ANZ Beverley Branch is closing on Wednesday 29 September 2021

This announcement is causing **significant concern and distress** in our vibrant and growing rural community. Residents, local and regional businesses, community organisations and visitors will be affected.

It will mean no bank in our town, loss of 24/7 Smart ATM, no cash handling facilities, reliance on internet based banking (many do not use the internet, many can't because of poor internet and phone connectivity), no reasonably accessible "in person" branch, loss of knowledgeable and helpful local staff.

Here's a couple of things we all can do:-

**A feedback questionnaire and comments form will soon be in your postal box.**

**Please Respond.**

Correspond back to the signatory of your letter or email which advised that the bank is closing and explain how the suggested "other ways to do your banking" will affect you. If you don't use email then the postal address (which most likely was not on the correspondence) is as follows:-

**Attn: whoever signed your letter  
ANZ, Level 5, 240 St Georges Tce, Perth WA 6000**

Dee Ridgway  
Immediate past Beverley Shire President (2009 – 2019)  
M: 0428 464 007 E: deeridgway@bigpond.com



### BEVERLEY HOSPITAL AUXILIARY

Op Shop has been very busy over the last few months and all profits from the Op Shop are always used to benefit the health needs of the people of Beverley. A new La-z-boy recliner chair has recently been installed at the Hospital and our previous significant donation of a purpose designed safe tea trolley is also in use.

We are very proud to have recently made a significant donation to the Cancer Council Crawford Lodge. We have adopted a suite for 12 months. The Cancer Council Lodges provide a home away from home to up to 5000 country cancer patients each year. Cancer impacts so many lives and having a dedicated place for accommodation and transport to appointments allows for earlier treatment and reduced stress, helping to improve survival outcomes.



At our next meeting we will be discussing further donations to aid health outcomes within our own Beverley district.

If you would like to add your name to the roster for the Op Shop please phone Gina Adams 0427 461 368.

Committee: Our seasonal changeover busy bee will be on Monday 03 May at 9:00am. Our committee meeting will be at 12 noon on the same day.



### **BEVERLEY LANDFILL SITE**

#### **OPENING HOURS**

Saturday  
8.00am – 4.00pm

Sunday  
8.00am – 4.00pm

Monday  
8.00am – 3.30pm

**PLEASE NOTE:  
MONDAY'S EARLIER  
CLOSING TIME**

**CLOSED  
Christmas Day  
and  
Total Harvest Ban Days**



## Beverley Historical Society Dead Finish Museum

bhsdeadfinish@gmail.com

### BEVERLEY HISTORICAL SOCIETY

With the nice weather lately, we have had a steady number of visitors to the Museum. Many come for information and research and others just to enjoy the lovely building and exhibits. If you have some spare time on a Sunday, come and pay us a visit.

Once again we are relying on the general public for photos and information. (We will always copy the photos and return them to you). We are seeking;

1. Photos or info on the students at the Convent School during the early 1940s.
2. Any information on bells/clocks that were around Beverley in the early years.
3. Any information on the Jacobs Well School.

New members are always welcome.

Next meeting: Monday 10 May 2021 at 1.30pm held at the Dead Finish Museum.



## THE PIANO TUNER Mark Lindsay

Nat. Dip. Piano Tuning. Member APTTA

will be in the Beverley area between  
8 - 10 May 2021.

Is your out of tune piano causing some discord? If the answer is yes, call me to have your piano tuned and/or repaired.

With 31 years experience,  
I will have your piano sounding  
as it should in no time.

To book an appointment  
please call me on 0411 578 665

I visit the area regularly, if these dates don't suit, please call to arrange another time.

## Saturday 01 May 2021

RAISING MONEY 2021 FOR BEVERLEY  
JUNIOR SPORTS

## BEVERLEY COMMUNITY MARKETS

Stalls, sausage sizzles, raffles



Held on the first Saturday of  
each month between March  
and December

STARTS 8AM



Old charm country pub  
Accommodation and free camping  
Air con and character dining rooms  
VISIT FOR THE EXPERIENCE

OPENING TIMES:  
Everyday Dinner from 5.00pm  
Wednesday—Sunday from 12.00pm  
for lunch and dinner

PH: 9641 4095

444 GREENHILLS ROAD, GREENHILLS



**Beverley**  
MASSAGE THERAPY

**Monday 9.30 - 6.30pm**  
**Friday 9.30am - 2.30pm**  
*by appointment*

Weekend appointments also available at  
certain times. Call or message Christine on  
0408 369 998 or visit  
[www.facebook.com/vitaminAskincare](http://www.facebook.com/vitaminAskincare)

In Beverley Chiropractor Centre in the Cornerstone  
Building (Entrance off Dawson Street)





On behalf of the Beverley RSL Sub-Branch, we wish to thank all those who attended the ANZAC Day services to show their respects to our service men and women who have died and those who continue to keep our great country free.

A special thanks to Shannon and staff at Hotel Beverley, the Top Pub, for the great Gunfire Breakfast. Also a big thank you to John Lane and all the other helpers.

It was great to see the local volunteers of the Fire and Rescue Service and St John Ambulance, local Police, Shire President, CWA, Hospital volunteers and of course the members of the public.

Thank you also to the Student Councillors from Beverley District High School for helping with the flags and for their recitals. We hope to continue the relationship with the school.

A very moving poem was read by Irene Oram which brought a number of the people present to show a few tears. A number of people retired to the Top Pub for refreshments after the 11am service, maybe due to it turning out to be quite a warm day! Several enjoyed a friendly game or two of "two-up" during the afternoon.

Please remember that all former Defence Force personnel, serving ADF persons, and Veterans from Allied Countries, are eligible to join as service members. Family members may request to join as Affiliate Members.

Monthly General meetings are held at the RSL Hall on the first Monday of the month, except when it is a public holiday, and there is no meeting in January.



SAVE THE DATE

*Spring Back to  
Beverley*

SEPTEMBER 2022

Celebrating 150th Anniversary of Beverley Road Board, 150th Anniversary of Dead Finish Museum & other significant Shire of Beverley projects

Watch this space for more information.....

**Be verley**  
Western Australia  
Be very you





## Beverley Branch News

As with every organisation we need to record our financials, so from the Beverley CWA we give a big thank you to David Pass for not only auditing the CWA books but also for his generous donation of \$100. Thank you, David.

Thank you to the community of Beverley for their support of the CWA on Easter Saturday, at their cake stall, raffle and money board. Funds raised will go towards the ceiling renovations in the CWA Hall. We were happy that so many people commented on how good the CWA garden is looking now, also many were pleased that we show a list of ingredients on all the cakes. We feel that in these modern times it is important for everyone to know what they are buying.

Winners:

Money Board: 1st E. Murray, 2nd P. Bradley, 3rd J. Alexander.

Raffle prizes : 1st M. Hutchinson, 2nd K. Allison from York, 3rd Louis, 4th J. Fregon, 5th E. Dunne and 6th Ray Austin.

At our meeting on April 21 member Vicki gave us another informative talk about Japan—many thanks Vicki.

We will be holding a social get together on **Wednesday 05 May** from 9.30am to 11.30am, for anyone who wants to can come along.

Our next fundraiser will be a morning tea to be held at the CWA hall (Beverley) on **Saturday 08 May** between 9.30am to 11.30am, when we will also be holding a Mother's Day raffle, yes, it has come around again.

Our next monthly CWA meeting will be held on **Wednesday 19 May** from 9.30am after which we will share lunch together.

A future event worth putting into your calendar is in July when Kings Park fashions will be coming to Beverley again, there will be more information in the next Blarney.

If you would like to hire the CWA Hall or have any enquiries about membership or fundraising our President Pat Hambly or Treasurer Wendy Hambly will be pleased to answer your questions on 9646 1481.

## NATWAY FURNITURE & CONSTRUCTION

ABN: 62 824 726 465

WAYNE & NATALIE ASHWORTH

Qualified Carpenter & Joiner Tradesman

General Building Work

Furniture Construction & Restoration

CONTACT US

27 Brooking Street, BEVERLEY

Wayne 0417 973 415

Natalie 0429 491 039

natwayfc@bigpond.com

## TREE LOPPING

Wheatbelt Arborist Service Professionals



Tree Loppers - Based in Beverley  
Tree Removal - Lop, Drop and Chop  
Trim - Tidy - Mulch - Remove Debris  
Hi-ab Crane Services  
Plus General Cartage Available  
Fully Insured  
ABN 267 723 785 36

**MICK HEAVEY**

0447 099 947 - Weekends

08 9646 0104 / 0429 456 694 - Weekdays

wasp.treecare@gmail.com



COUNTRY  
LINE  
DANCING

Thursday mornings at  
the Town Hall

Enquiries to  
Jan 0429 952 177



# Thank you

Sunday night Black Tie function at the 87th Annual Beverley Open Tennis Tournament was a fantastic night. I was humbled by the comments from the speakers, and the amount of people in attendance. I have enjoyed the support and appreciation shown by the committee, club members and players, to myself and Dina.

Over the years I have enjoyed presenting the courts and club surrounds to the highest possible standard. The payback was being part of a fantastic club and the honour of life membership (2008), also seeing three generations of local families playing tennis at the club, and the healthy socialising after Sunday tennis.

I look forward to visiting as often as possible and wish the club all the best for the coming years.

Rob de Gruchy 14/4/2021

In memory of  
**Joseph Dean Bardon (DEAN)**  
Who passed away on 15 April 2021.

Remembering your quiet nature,  
your gentlemanly way,  
and your perseverance to  
continue through tough times.

We will always remember  
your quiet friendship.

**R.I.P. Dean**

**Bev and Mel Vivian**



## BEVERLEY RSL SUB BRANCH

### General Meeting

**Date:** Monday 03 May 2021

**Time:** 5.00pm (1700hrs)

**Venue:** RSL Hall 50 Forrest St.

RSL members please note that in future that the RSL General Meeting will be held on the first Monday of each month starting at 5:00pm (1700hrs) at the RSL Hall 50 Forrest Street.

# Thank you

During the five weeks I was in hospital. I would like to thank all the people who sent cards, flowers, messages, phone calls and everyone who asked after me.

Also thanks to Edna and Terry, Dawn, Ann and Fred who helped in lots of ways. Thanks to Darren and Cass Brouwer and Phil Gibbs who watched after Fred.

Leonie and Wayne, you have done so much for me, I don't know how I would have got on without you, thanks lots.

Denise Strange.

# FRIDAY BINGO!


**FRIDAY 28 MAY 2021**

BEVERLEY  
CORNERSTONE  
141 VINCENT ST

EYES DOWN 1.00PM  
FINISHING AT 3.00PM



AFTERNOON TEA AVAILABLE  
FOR MORE INFORMATION  
CONTACT SAM 9646 1600

 Beverley  
Community Resource Centre  
*Your local connection*

## Come visit the Beverley Mens Shed

Open every Tuesday morning 8:30am 11:30am  
at the Old Fire Station, drop in for a coffee and  
a chat and have a look at all of the great  
equipment available for member use.

**Did you know?** Mens Shed Members can use the  
tools and facilities for their own projects at anytime.

New members always welcome. For more details  
contact Jon Rothwell (President) on 0447 872 128  
or email Beverley Mens Shed President  
Jon Rothwell [president@beverleymenshed.com](mailto:president@beverleymenshed.com)

*You are cordially invited to attend the  
Beverley Amateur Dramatics 2021  
Performance of...*

# *Secret Bridesmaids' Business*

**WRITTEN BY ELIZABETH COLEMAN**



**2021 DATES**

FRIDAY 7TH MAY  
SATURDAY 8TH MAY  
SUNDAY 9TH OF MAY

**TIME**

6.30PM FOR A 7.30PM START

**VENUE**

BEVERLEY TOWN HALL

**TICKETS**

\$25 ADULT | \$15 KIDS  
\$20 CONCESSION (PRESALE ONLY)  
FROM THE BEVERLEY CRC OR [WWW.TAZTIX.COM.AU](http://WWW.TAZTIX.COM.AU)  
TABLE BOOKINGS: 0417 983 410

**ANY TICKETS PREVIOUSLY PURCHASED ARE  
TRANSFERABLE OR REFUNDABLE**

**CASH BAR ONLY**

**DISCLAIMER: ADULT THEMES,  
INTERMITTENT COARSE LANGUAGE  
RECOMMENDED RATING: M**





**OPENING HOURS**

Monday - Friday  
9.00am - 4.30pm  
Phone: 9646 1600



**DON'T MISS THIS ONE!  
DAWN COLLINS  
LIVE IN BEVERLEY**

One night only opportunity to watch internationally acclaimed psychic medium Dawn Collins brings messages of love, hope and inspiration. \$5 from every ticket sale will be donated to the Beverley Community Resource Centre to benefit the people of Beverley.  
NO DOOR SALES

Thursday 20 May 2021  
Evening event 7.00pm - 10.00pm  
Beverley Cornerstone, 141 Vincent St  
Bookings online:  
[dawncollinsmedium.com/events](http://dawncollinsmedium.com/events)

**HAVE YOU BOOKED  
YOUR PRIVATE READING WITH  
DAWN?**

Available for 1 hour sessions on Friday  
21 May at the Cornerstone.

Bookings through the CRC Call  
9646 1600.

Hurry limited spaces

**DAWN  
COLLINS**  
*Live in Beverley*



One night only opportunity to watch internationally acclaimed psychic medium Dawn Collins, bringing messages of love, hope and inspiration. All profits will be donated to the Beverley Community Resource Centre to benefit the people of Beverley.  
NO DOOR SALES.

<https://www.dawncollinsmedium.com/events-1/dawn-collins-live-in-beverley>

We are incredibly proud of our sub committee who have worked so hard to create the community garden. They have created a hub for healthy lifestyles and through it's fruition it has also created and strengthened many friendships.

To celebrate this groups passion we are hosting a week of gardening based workshops. A full list of times and venues are on the front cover of this Blarney edition.

Our centre would like to thank Linkwest and Lotterywest who supported this project.



**NEIGHBOURHOOD CENTRE WEEK 2021**  
**GOOD THYMES IN THE GARDEN**

**TICKETS \$2 OR 3 FOR \$5 OR 6 FOR \$10**

Bonus - all attendees receive one free raffle ticket





# BEVERLEY BADMINTON



Our season can commence at last!

The starting date is Wednesday 05 May 2021 at 9am, hope to see you all there.  
New members are welcome.

Weekly games - Wednesday Morning's at 9am



Beverley Shire Town Hall

Please wear closed in shoes. Rackets are provided

For More Information or Enquiries

Call Elaine 0408 903 478

Find us on Facebook



Or Email: [beverleybaddy@outlook.com](mailto:beverleybaddy@outlook.com)



**SPECIALISING IN**  
**AGRICULTURAL & HAULAGE**  
**BATTERIES, OILS & GREASE**  
**ALL SIZES & BRANDS**  
**TYRE REPAIRS**

**ON-CALL AFTER HOURS**  
**0407 457 427**  
**4B DAWSON ST, BEVERLEY WA 6304**

# Painter Decorators

All repairs & painting

Lyndon & Cameron Grover

0427 661 302

[lydongrover@bigpond.com](mailto:lydongrover@bigpond.com)

Reg: 3941



- Plastering
- Pressure Cleaning Roof
- Gyprock
- Spray Painting
- Repairs
- Gutter Replacing

OUR GROUP OF CARERS WORK WITH ANY WILDLIFE FOUND ON ROADSIDES

# WILDLIFE EMERGENCY RESPONSE WA

We are a network of carers in Western Australia specialising in the rehabilitation of injured and orphaned wildlife.

Our team contacts

PHYLLIS FACEY 0437 483 175

LYNN POWELL 0417 959 913

SONIA COOKE 0423 806 757



# Beverley Garden and Tree Society

Our April meeting was replaced by a visit to an Eremophyla nursery in Kalamunda. We met at the Dead Finish at 9.30am and left on the bus promptly at 10am. Di Smith delivered us safely to the Orange Valley Nursery where we were met by Phil and his little dog, Coco. We made our way up to the patio area, all the while admiring the well filled garden where he and his wife have a lovely collection of plants.

Phil entertained and enlightened us with his encyclopaedic knowledge of all things Eremophyla and after some refreshments, kindly supplied by Phil's wife, we headed down to where his nursery called to us. I have to say that quite a few Eremophyla have made their way into Beverley gardens, including one in the Dead Finish garden. Following this we ventured into Kalamunda town to have lunch at a café. The day was very much enjoyed by all.

Our next meeting will be held at the Dead Finish museum on Tuesday 04 May at 10.30am. There will be a "bring and buy" table.

Hopefully rain has finally arrived and there couldn't be a better time for gardening. There is still time for plants to become established before the really cold weather hits us.

## VEGETABLES TO PLANT

BROAD BEANS, BROCCOLI, CABBAGE, CRESS,  
SPINACH, LETTUCE, ONION, RADISH, SHALLOTS,  
SPRING ONION AND STRAWBERRIES.

## FLOWERS TO PLANT

CORNFLOWER, PANSY, POPPY, STOCK,  
STATICE, VIOLA AND CALENDULA.

May is a great time to attend to the following tasks:

- Lift and divide clumps of native violets and replant in the shade. Keep soil moist.
- Snap off the flowers of herbs to keep the tasty leaves growing
- Thin overcrowded fruit on apple, pear, citrus and plum trees so the remaining fruit can develop to full size and flavour
- If you have an area of persistent weeds, cover them with a thick layer of overlapping newspapers, then a 5-8cm layer of mulch over that
- Overcrowding of bulbs in containers can look really good so pack them in closer for maximum effect
- Prune bottlebrush once autumn flowering has finished. Prune behind the flower heads
- Now is the perfect time to plant coriander
- Transplant any shrubs that are in the wrong spot or are being crowded out
- Lift and dry garlic and onion once the leaves start dying
- If you find aphids on new shoots, squash or squirt them off with a jet of water. If you have black spot on roses, remove affected leaves, avoid overhead watering and ensure good light and airflow around plants
- Trim westringia, lillypilly and lemon myrtle hedges
- Move cold-tender indoor plants away from cold windows and cut back on watering in the cooler seasons
- Fertilise a newly planted rose once it puts on about 5cm of new growth
- Water citrus regularly as the fruit is maturing. A lack of water can cause fruit to drop before it reaches full size
- Add slow release fertiliser to pot plants
- Give bulbs plenty of water while growing but stop watering when their leaves start to die down
- Pumpkin is ready to harvest when the stalk attached to the vine starts to wither and change colour.

Enjoy your time in your garden in May.







# Valenti Lawyers Are Now In Northam

valentilawyers.com.au



Valenti Lawyers is a boutique law firm which prides itself on providing a personalised quality legal service. We specialise in eight core services for leading businesses and individuals, each led by one of our experienced senior lawyers; Business Growth & Protection, Dispute Resolution & Commercial Litigation, Finance & Security Services, Insolvency, Land Reservation, Resumption & Compensation, Property & Town Planning, Rural Assets & Succession Planning, and Wills, Probate & Inheritance. You can now find us at the below address in Northam every fortnight!

**Open fortnightly from the 12th February 2021.**

Please head to [valentilawyers.com.au](http://valentilawyers.com.au) to view our Northam office dates, and to book an appointment with one of our staff.

**RSM  
210a Fitzgerald St East.  
Northam WA 6401**





## PLAYGROUP SESSION DETAILS



**When:** Thursday  
morning's  
(closed on school &  
public holidays)

**Time:** 9.30am to 11.30am

**Where:** at the Playgroup  
Building at the Beverley  
School (Lennard St)

Available for all children  
aged 0-4 years old

Bring a piece of fruit to  
share, hat and sunscreen

**Weekly gold coin  
donation for Term 4**

### Annual Fees

Family - \$35 for Insurance

Concession card holders -  
\$15 for Insurance

Find us on Facebook:  
Facebook.com/  
BeverleyPlaygroupWA

For more information  
contact President  
Kelly Aaron 0400 772 081



**Flu shot NOW available for all ages  
Get your flu shot here today at  
VINES MEDICAL PRACTICE**

## We are a COVID-19 vaccination clinic

Talk to reception about when you are  
eligible to receive your vaccination  
and to make an appointment.

To keep up to date with the latest  
progress, and to ensure your  
information is reliable, visit  
[health.gov.au/covid19-vaccines](http://health.gov.au/covid19-vaccines)

**COVID-19  
VACCINATION**



**CALL US ON - 9646 1125 or 9468 3606**

135 Vincent Street, Beverley WA 6304  
12 Williams Street, Brookton, WA 6306  
[www.vinesmedicalpractice.com](http://www.vinesmedicalpractice.com)



**Based in Balkuling...Servicing Statewide!**

For all your Lime, Gypsum, Urea, Sulphate of Ammonia,  
Chook Manure and Compound Fertiliser Spreading needs.

We also supply, deliver and spread Fertiliser from bulk bags for Hobby Farms!

**Ph. Jim - 0427 777 765  
[ballantyne@bordnet.com.au](mailto:ballantyne@bordnet.com.au)**



## THE BLUE LINE

Beverley Police Station

57 Hunt Road Beverley WA 6304 [BeverleyPol@twitter.com](mailto:BeverleyPol@twitter.com)

Email: [Beverley.Police.Station@police.wa.gov.au](mailto:Beverley.Police.Station@police.wa.gov.au)

# DOB IN A DEALER



An Australian Government Initiative

Your community.  
Your call.



Beverley, like many small country towns is not immune to the scourge of drugs and those that deal in drugs. Whilst police continue to identify those that deal in drugs, the help from the community to also identify and report drug dealing is of enormous benefit to us.

Dealers don't care about the harm they cause or care about the age of the person that they sell the drugs to. Every piece of information received from the community goes a long way towards catching these dealers.

Whilst dealers try to be covert and hide their dealings, there are signs that you can keep an eye for:

1. Multiple people walking to and from a house. Not staying long and leaving hurriedly.
2. Different cars pulling up to a house and the occupant of vehicle getting out and not staying long before driving off.
3. Two people meeting in a secluded spot, not talking long and appearing to hand over things to each other.
4. Vehicles pulling up next to each other and handing things over through the window. This would usually occur in areas of low vehicle traffic, away from main streets. For Beverley that could include the dirt track behind pony club, the cemetery and on the main highway just out of town.

If you have information to stop the supply of drugs in Beverley contact Crime Stoppers on 1800 333 000 OR [www.crimestoppers.com.au](http://www.crimestoppers.com.au) if you wish to remain anonymous, or contact Beverley Police.

**KNOW SOMETHING? SAY SOMETHING!**

### BEVERLEY POLICE – HOW TO CONTACT US

Life threatening or an emergency dial **000**

For all other matters phone **131 444** or **9646 3333**.

If it's not urgent send us an email [Beverley.Police.Station@police.wa.gov.au](mailto:Beverley.Police.Station@police.wa.gov.au) or leave us a message on twitter [@BeverleyPol](https://twitter.com/BeverleyPol)

Please take care and stay safe.

Sergeant Darrell Hagan and Senior Constable John Lines



# Station News



The Station garden is available for public use at any time;  
just open the gates and enjoy!

## COVID-19:

Please practice good hygiene and physical distancing at all our events, and use the hand sanitiser stations provided. If you are feeling unwell or have travelled outside WA in the 14 days prior to events at the Station, please do not attend.



## Artists-in-Residence at the Station Gallery

### Artist in Residence

During the month of April, we had botanical artist Howard Laylor and his friend manning the station gallery over this Easter period (pic right).

And for the second half of the month, Lorraine Pichugin and her husband John were residing. Lorraine ran two very successful drawing workshops on the weekends which attended by beginners and advanced artists alike (pics below).



**Artist in Residence for May** will be Kath Moore. Kathe was here last March and returns for the month of May. Please make her feel welcome.

Please keep an eye on the weekly Bulletin for further information regarding residencies, workshops or any changes to schedule to schedule - or contact A-i-R Coordinator Marylou on 9647 1027 / 0427 085 511 or email: [hutchinson@wn.com.au](mailto:hutchinson@wn.com.au)

### Artists-in-Residence Programme for the remainder of 2021

MAY: 01 – 15 Kath Moore

MAY: 17 – 31 Nancy Ballesteros and Kathy Allam

JUNE: Jenni Flora

JULY: 01 -20 Trish Davis; 22-26 Jane Etienne

AUGUST: Rod Brown

SEPTEMBER: Carolyn Rhodes-Thompson

OCTOBER: Alan Pickering

NOVEMBER: 01-14 Kelsey Diamond;

NOV: 15-22 Annis Woods; 24-30 Thelma Cluning

DECEMBER: Julie Parsons and Peter Clarke 1- 14





## Easter Art Exhibition

Beverley's 52<sup>nd</sup> Art Purchase Exhibition Thursday 01 – Monday 05 April 2021 was hugely successful. With more than 400 artworks from renowned artists across Western Australia, this year's Art Prize & Exhibition was met with glowing reports from artists and public alike. Picture below shows the hard-working and dedicated committee of Beverley Station Arts, who (along with many wonderful volunteers) are to be commended. 63 paintings were sold. The exhibition opening on the Thursday night was officiated by Shire President Don Davis to an enthusiastic crowd just short of 200. The overall prize winner was Elmari Steyn who travelled from Manjimup to collect her \$5000 prize for her artwork *Treehouse By The Sea 1*. Beverley Station Arts purchased this exquisite print to add to the Shire Collection and as soon as it's framed will be displayed at the Station Gallery for all to see. The most popular artwork judged by the public was the oil painting portrait *Passage of Time* by Chris Goldberg. All other prize winners are listed at the end of these notes.



2021 art judges with the overall winning artwork



Beverley Station Arts Committee (missing Issy Freeman)



The lucky winners of the beautiful raffle painting by Nina Jones



2021 Beverley Easter Art Prize & Exhibition - Overall Exhibition Judges' (Camilla Loveridge and Anne McCaughey) Comments – When we first entered the gallery, our eyes were entranced by the variety and the rich colours in front of us. What an immense tribute to the organisers to gather all this work, to co-exist.

Overall Winner | *Beverley Art Prize Treehouse By The Sea 1* | Elmary Steyn

Best Local Artist | *From Beverley Oval* | Jan George

Young Artist Award | *Mr. Fixet's Workshop* | Oscar Cooke

First Prize | *Dry Media Kalbarri Gorge* | Adrienne Kinnear

First Prize | *Aqua-Based The Blacksmith's Shed* | Suzanne Arnautovic-Hibbert

First Prize | *Oils Noongar Landscape with Yam* | Georgia Efford

First Prize | *Acrylics The Essence* | Kale Miller

First Prize | *Mixed Media Collection 9 Country Walk* | Jane Grierson

First Prize | *Printmaking Point of Origin* | Jane Button

First Prize | *Small Artworks Hours and Days* | Jane Grierson

First Prize | Junior (13-17 years) *Is This What I've Become – A Piece Of Meat?* | Abbey Cooke

First Prize | Junior (7-12 years) *Woman Underground* | Bella Mellick

First Prize | Junior (6 and under) *Draw Draw Draw* | Maive Thompson

## **BILL CHAMBERS**

### **Chartered Accountant & Registered Tax Agent**

Tax return preparation

Financial and accounting  
advisory services

Office hours:  
First and third Wednesday  
9.30am - 5.00pm

129 Vincent Street, Beverley  
9646 1566 (Monday - Friday)

## **BEVERLEY CHIROPRACTIC CENTRE** **Dr Liam Welfar**

### **CORNERSTONE BUILDING**

141 Vincent St, Beverley  
(Entrance off Dawson St)

**08 9646 0523**

**Back Pain? Neck Pain? Headaches?  
Sporting Injuries? Postural Problems?  
Call us today to find out how I can help.**

**Hicaps facility available onsite**

**Brick & Mortar RESTORATION**  
A FAMILY TRADITION SINCE 1945

**Over 60 years of experience in the  
Building Industry, Restoration Industry,  
Insurance Builders and Brick Repairs Industry**

**WHY CHOOSE US**

- ✓ Family Tradition Since 1945
- ✓ We are committed to deliver the best possible Customer Service experience for our Customers
- ✓ No pushy salesman on commission
- ✓ Our Team are direct Employees of Brick and Mortar Restoration
- ✓ We train Apprentices in Heritage Brick Restoration
- ✓ No External Call Centres
- ✓ The Owners of the Business Ross & Tammy Femihough are always available
- ✓ State Distributor of Thorhelical products
- ✓ Approved Installers for Thorhelical Remedial Solutions
- ✓ Employmore Workplace Confidence Member
- ✓ Workers Compensation Insurance
- ✓ Product and Public Liability Insurance \$20 Million
- ✓ State Distributor of Round Tower Hydraulic Natural Lime

**Tuckpointing | Mortar Pointing  
Stonemasonry | Crack Repairs  
Brick Restoration  
Limestone Restoration  
Rendering | Ceiling Repairs  
Pebble Dash Render  
Stucco Render  
Lintel Replacements  
Wall Alterations | Carpentry  
Plastering | Paint Removal  
Lath and Plaster**

Call 1800MORTAR (667827) [www.brickandmortarrestoration.com.au](http://www.brickandmortarrestoration.com.au) [info@brickmortar.com.au](mailto:info@brickmortar.com.au)





**Easter Markets** - a wonderful array of arts and craft stalls, clothing, shoes and bags, jewellery, honey, plants, free face painting for kids, and other entertainment all combined to be the height of activity on the Saturday of Easter – it was frantic! And the fun and energetic Oompah! Bavarian music band provided great entertainment from 11am - 1pm.



 **Beverly Amateur Dramatics (BAD)**

The play *Secret Bridesmaids' Business*, is being performed by our local drama club over four nights – **Friday 23 April, Friday 07 May, Saturday 08 May and Sunday 09 May.** The venue for the remaining shows is the town hall.

If you would like to be involved in future productions, contact Britt Hadlow by email: [britt.hadlow47@hotmail.com](mailto:britt.hadlow47@hotmail.com) or [beverleyamateurdramatics@gmail.com](mailto:beverleyamateurdramatics@gmail.com)



Last week of rehearsals at the Platform Theatre





## **Beverley Station Singers**

It was another two good turnouts on March 31 and April 21 where new songs were introduced and practicing to performance practice for the Merredin Songfest 2021 on 14-16 May. Station Singers will continue to meet on a Wednesday every 2 - 4 weeks. Next session will be **May 05 at 7pm.**

Singing is directed by the talented Kelly Newton Wordsworth, cost \$20per night. Sarah Miller is coordinating singing so if you are keen to come along you can phone 0427 464 078.

A separate practice with Mark Kont was also squeezed in for the ANZAC service. Unfortunately, only a few were able to attend the service due to BAD production being performed on the same week.

## **Desperately Seeking Thommo**

On Sunday 18 and Monday 19 April – the dinky caravan ‘Chin Wagon’ owned by ABC radio and stage star Andrea Gibbs, was parked outside the football clubrooms following the footy match and then later at the Hotel Beverley to interview our local lads in the search of ‘Thommo’. Interviewed by Sam Lynch from CircuitWest and Andrea, we believe it was a lot of fun and not as scary as the lucky 13 had anticipated. All interviews were confidential and the recordings are to be analysed in the State funded research to discover why men are less inclined to attend arts events. Monday evening saw the ‘Chin Wagon’ outside the Freemasons Tavern to entice more willing interviewees with less success. We therefore thank Matt McLean for encouraging the footy players to ‘play the game’ and by doing so earned the club \$500.



We are taking a wee break till August/September in which time we will be organising the monthly program to take us through to next April. Hope to see you all back then!



## **Volunteer Thank You**

- to the wonderful volunteers who helped unpack and repack the paintings for the Easter Exhibition
- to Joey Walter for the enormous time being put into preparing for the Easter Art Exhibition
- to Lisa Green for giving up a day of work to help curate the exhibition
- to Steve Ramm for his comeback to create the power point presentation for the exhibition opening
- to Nina Jones for donating her painting for the exhibition raffle prize
- to Marlene Willson for organising the Station Markets
- to Tim Kilpatrick for setting up the sound for the markets
- to the BSA committee for spreading themselves over the four nights of ‘Secret Bridesmaid Business’
- to Valda for keeping the station gardens beautiful in the event of an April wedding which unfortunately had to be postponed due to the bride and groom coming from Queensland held back by Covid lockdown

Jenny Broun, President Station Arts. 0419040063

### **Station Gallery Open Hours:**

**11.00am – 3. 00pm**

**Thursday, Friday, Saturday and Sunday**

## **BEVERLEY STORAGE & TOWING**

HUGE NEW PREMISES LOCKED & FENCED

\$100 A MONTH CARS, CARAVANS, BOATS, MOTORHOMES WE HAVE ALL OF YOUR STORAGE NEEDS COVERED.

TILT TRAY WITH WINCH CAR TRAILER  
PICK UP AND DELIVERY - ALL AREAS

**BRETT HIGGINS**  
**0400 048 976**

beverleystorage@hotmail.com

www.facebook.com/BeverleyStorage



# **AvonValleys WINDSCREENS**

*"We Come to You"*

**0429 001 393**

**www.avwindscreens.com**



15 May 2021  
10:00—3:00pm



## Northam Senior High School Turns 100

The celebration will include :

- 100<sup>th</sup> Commemorative items available for purchase
- Food and Beverages
- Entertainment
- Official Ceremony
- Historical Displays
- School Tours

# Northam Senior High School Celebrates 100

# Years

Northam Senior High School  
Kennedy Street NORTHAM WA 6401

Telephone: 08 9621 0000  
Email: [northam\\_shs@education.wa.edu.au](mailto:northam_shs@education.wa.edu.au)  
Website: [northamshs.wa.edu.au](http://northamshs.wa.edu.au)

1921 - 2021



As the morning sun illuminates the imposing façade of Northam Senior High School each day, it is difficult to believe that it was first established a century ago.

Designed by William Hardwick, the state's preeminent architect, the school has been offering high quality educational services to Northam and surrounding areas since 1921.

To commemorate this impressive achievement, the school will host a Centenary Celebration on 15 May 2021, offering an exciting and comprehensive range of activities designed to appeal to everyone, young and old.

Apart from the formal ceremony, guests can enjoy historical displays, guided tours, classroom displays, musical items, kids' activities and tempting food options.

As the event approaches, further details will be posted on the school's website but booking details and official centenary merchandise are available via [www.northamshs.wa.edu.au](http://www.northamshs.wa.edu.au)

## CRANA Aboriginal Corp Inc

1. The Registrar of the whole region in WA met with President Mitch Henry and Mal Roberts to discuss changes in Crana's Rate Book. Crana is a registered as a charitable body under the income tax act and the charitable governing body.
2. To date we have not received and funding from government bodies. Since Crana was founded some 26 plus year ago. Crana was self funded for some 10 years the building known as the "Westpac" was rented to the community resource centre and Mal Roberts and 4 Crana members were on the committee. For many, many years it was Sylvia Seddon, volunteers, John Banks (late) who kept the CRC going. It must be place on record for months Crana did not collect rent. 2008 CRC close down at the AGM and Mal Roberts and Brian Beadall took over the management of the CRC with Sylvia Seddon and Crana Aboriginal Corp committee members played a vital role to keep the doors of the CRC open including meeting with CEO of the CRC with Mal Roberts in his office at the town hall we had endless discussions. Due to health probs president Brian Bedell hand over all book work to Mal Roberts who, in turn, handed them over to the Shire of Beverley. The Beverley community must to aware of Crana's support to the local CRC.

Mal Roberts  
Advisor/director

Mitch Henry  
President



# BEVERLEY Clay Target Club

Nicholas Street, Beverley

We meet one Sunday a month and anyone who would like to try clay target shooting is most welcome to come along. Gun and ammo can be supplied by us. If you are interested in becoming a new member or would like more details. Call 0413 058 943

## 2021 SHOOT DATES

DATE	EVENT
Sunday 16 May	SHOOTERS CHOICE
Sunday 13 June	25 DB 25 SB
Sunday 11 July	50 DB PTS
Sunday 08 August	60 MXD
Sunday 12 September	SHOOTERS CHOICE
Sunday 10 October	25 SB PTS
Sunday 14 November	50 CONT
Sunday 12 December	CAPTAINS CHOICE

All shoots start at 10.30am

**ChemDry®**  
Drier. Cleaner. Healthier.™  
**Betta Finish**



Superior carpet  
& upholstery  
cleaning

**Freecall 1800 017087**

bettafinish@wn.com.au

Fax 08 96225473

**OPTOMETRIST  
AVAILABLE ON  
TUESDAY'S  
in Beverley**



**Peter Tidman  
OPTOMETRIST**

If you are over 65 years of age,  
you are entitled to a yearly  
bulk billed check-up.

We encourage you to keep  
on top of your eye health.

You can find us at the  
RSL Hall, 50 Forrest Street, Beverley.

Appointment bookings  
Please call Beverley CRC 9646 1600.

PIECE 3 IS HERE...

Saturday; August 21st, 2021

**Beverley  
Agricultural Show**

**Are you a member of the Beverley Ag Society?**

Head to [www.beverleyagsociety.com/ticketing](http://www.beverleyagsociety.com/ticketing) or complete the form in the Blarney to sign up now!

**Standard Membership - \$25**

Includes 2 Adult tickets, Member Dedicated Parking & Free Afternoon Tea

**Family Membership - \$30**

Includes 2 Adult tickets and up to 3 Children's tickets, Member Dedicated Parking & Free Afternoon Tea  
(Extra Children tickets available for \$3.00 per child)

**Tickets Available at the Gate**

Adults - \$13  
Pensioners/Carers/Children (4-15yrs) - \$6  
Kids Under 4 - Free

Cash & EFTPOS facilities available



**TV ANTENNAS  
UHF CB Sales, Service**

Onsite installation & repairs.

Bench repairs.

TV reception problem solving  
& new systems.

Satellite TV systems supplied and  
installed.

Caravan and mobile home TV problem  
solving.

Mobile phone reception solutions  
for farm and vehicles.

**Regional Antennas  
Plus**

**Phone: Alan Primrose  
0408 002 965**







# Reusing & Recycling Resources



The Beverley CRC is supporting the STEAM program run by the Beverley District High School by collecting specific items that can be repurposed by the students.

## Items that are being collected are:



Cardboard tubing - NO toilet rolls



Old mobile phones



Craft paper



Unused craft supplies - beads, buttons, string, decorative pieces



Ice cream / Margarine containers (cleaned)



Unused fabric or wool - minimum 5cm x 5cm for fabric scraps



Plastic bottle tops (cleaned)



Dead pens, markers, textas, highlighters



Dead batteries - maximum size of D No car batteries

**Donations taken during business hours at the Beverley CRC**

**Reduce. Reuse. Recycle.**





## CWA York, CRC York and the school holidays!

The CWA and CRC in York banded together to make the April 2021 school holidays really enjoyable for the younger members of our community.



Day 1 was a craft morning with an ANZAC theme, held on Thursday 08 April in the CWA rooms at 154 Avon Terrace, York; 31 children, including some from the York Childcare Centre, attended. They were joined by three very enthusiastic ladies - Robyn, Bec, and Grace - from the York CRC. The activities included making CWA York Garden Balls (pictured), cooking ANZAC biscuits, decorating shopping bags, embellishing poppy shapes, making Mother's Day hearts, and painting. A yummy morning tea was provided by the CRC with CWA's homemade sausage rolls; Helen Grainger, Jean Wykes, Robyn Graham, Margie Barrett-Lennard and Dawn Ainsworth from the CWA were keen participants.



Day 2 was held on Wednesday 14 April with 12 teenagers visiting York from Perth together with their four support staff for craft activities and fellowship. The teenagers immersed themselves in making CWA York Garden Balls, ANZAC poppies, Mother's Day folded flowers, and decorating a Mother's Day heart. CWA York provided a morning tea of fruit, sausage rolls, and spinach and cheese rolls; Paula Armstrong, Jean Wykes, Kathy Murray, and Dawn Ainsworth joined in the fun. The highlight, thanks to Ross Ainsworth, was a ride in the 1910 IHC Motor Buggy (pictured). At one point, some of the group even broke into song! Afterwards, they visited the York Motor Museum as well as the York Men's Shed.

Both days were a wonderful, heart-warming treat for all involved.

Marion Bateman  
CWA York Branch Member & Media Reporter

# GROW A BUMPER CROP WITHOUT BREAKING THE BANK

## Your fertiliser dollar buys more at Whitfert

If you're looking for real economies of scale on farm, go with Whitfert's range of proven, quality fertilisers that don't cost the earth. Improve your yield potential without breaking the bank.

Go with Whitfert

CALL: 1800 654 089  
[www.whitfert.com.au](http://www.whitfert.com.au)





**VOICE OF THE AVON  
101.3 FM LOCAL PROGRAMMING**

**SUNDAY**

6.00 – 10.00 Sunday Breakfast - Terry  
10.00 – 1.00 Easy Sunday - Denni  
1.00 – 4.00 Teen Spirit – Gracie B

**MONDAY**

6.00 – 10.00 Monday Breakfast - Bob  
10.00 – 1.00 Monday am - Leslie-Ann  
1.00 – 4.00 Round the Bend.  
Over the Hill, Rhonda & KT  
4.00 – 7.00 Celtic Note - Joe  
7.00 – 10.00 Classical Sounds - Chris

**TUESDAY**

6.00 – 10.00 Tuesday Breakfast - Bob  
10.00 – 2.00 Country Roads - Joe  
2.00 – 5.00 Rockin' on the Avon - Denni  
5.00 – 7.00 Turn it up Tuesday – Michael

**WEDNESDAY**

6.00 – 9.00 Sunny Side Up - George  
9.00 – 1.00 A Little Bit of Everything – Joe  
1.00 – 4.00 Potpourri - Peter  
6.00 – 9:00 Back to the Future – Frank

**THURSDAY**

6.00 – 9.00 Thursday Morning - Joe  
9.00 – 12.00 Thursday am - Bob  
12.00 – 3.00 Kaleidoscope – Chris  
3.00 – 6.00 Drive - Graham  
6.00 – 9.00 Tonk'n along - Tonks

**FRIDAY**

6.00 – 10.00 Friday Breakfast - Bob  
12.00 – 4.00 Michael's Mix Up - Michael

**SATURDAY**

6.00 - 9.00 Saturday Breakfast - Nada  
9.00 – 12.00 Spirit of the Music - George  
12.00 – 2.00 Country Trax - Haydn  
2.00 – 4.00 Saturday Mix – Graham  
4.00 - 6.00 My Kind of Music – Lesley -Ann

Phone: Studios 9641 2422

Sponsorship: 0408 502 711

E-mail: [radio6ycr@hotmail.com](mailto:radio6ycr@hotmail.com)

Facebook.com:

Voice of the Avon 101.3 FM – 6YCR  
(with live streaming)

Website: [www.voiceoftheavon.org.au](http://www.voiceoftheavon.org.au)  
live streaming of Voice of the Avon  
101.3 FM

**87 hours of local presenters each week**

**Effective 06 April 2021**

**Changes may be made without notice**



**AVON TERRACE DENTAL | YORK**  
your smile. our passion.

**Now Open 9am to 5pm Monday to Friday!**

**Our Services:**

- Preventative and General Dentistry
- Children's Dentistry
- Anxiety Management
- Cosmetic Dentistry
- Implants
- Endodontics
- Crown and Bridge
- Teeth Whitening
- New Dentures and Repairs
- Emergency Dental Care
- Veterans' Affairs

*New Patients Welcome!*

Participating provider for

129 Avon Terrace

York WA 6302

(08) 9641 2123



**York Estate Agents**  
(Beverley Division)

**Good, Bad or Ugly We Sell!**

Free Appraisals

**"Properties WANTED we have qualified buyers waiting now"**

**Estate Experts**

**Professional and Trustworthy**

Residential and Rural - Mike Bawden

**0403 268 158**

Rentals - Jenette Callaghan

**0418 929 011**

Office - 9641 1335

Email: [yorkfn@westnet.com.au](mailto:yorkfn@westnet.com.au)

[www.yorkfn.com.au](http://www.yorkfn.com.au)





## Why Bamboo?

**Bamboo Charcoal - helping eliminate allergens, odours and damp.**

Because Bamboo is one of the most eco-friendly plants out there. It is fast growing to replenish itself, requires no pesticide and uses all the water it needs from natural rainfall.

When activated in kilns, the bamboo charcoal becomes carbon neutral and bio degradable so that when the charcoal has passed its “use by” efficiency (two years plus) it can be tipped into your garden soil. A recycling process at its most efficient and totally eco friendly.

**Safe & non toxic alternative** to scented air fresheners that contain dangerous chemicals.

### DIRECTIONS:



**Re-use & Rejuvenate** Kingpin Bamboo Charcoal Eco Packs by placing in the sunlight for 1 hour every month. UV rays clear the pores and re-set the bamboo charcoal ready to use again and again.

Recycle after 2 years by sprinkling the charcoal into the garden to complete the carbon cycle, as well as providing nutrients and water retention for the soil.

[www.kingpinteam.com](http://www.kingpinteam.com)

[www.kingpinpegs.com.au](http://www.kingpinpegs.com.au)

Diane Trouchet 0417 913 869

## These heroes hold everything, anywhere



Our signature Kingpin Pegs are super strong to fit rails and covers. The Super Jumbo Pegs have double springs for double the strength. Both sizes fit 35mm.

[www.kingpinpegs.com.au](http://www.kingpinpegs.com.au)



*SATURDAY NIGHT CHURCH*  
*- you are invited -*



***Where? : St Mary's Church 64 John St Beverley***

***When? : Saturday Night 1<sup>st</sup> May 2021 at 7.00pm***

***Special guest musician James Maley***

***WAPPA trained in the Cello***

***Cup of tea, coffee, food afterwards***

***Bring your family, we welcome you all***

**For more information call John on 042 8129 162**





# Star Hearing Consultants

Hear Better To Live Better | INDEPENDENT AUDIOLOGISTS

Expert Hearing Care Services in **Beverley & Brookton**

Do you have  
**Hearing difficulty / Tinnitus (Ringing in the ears)?**



**Check our Google reviews**  
to see what our patients say about our services!

**1 Hour Free Assessment**  
For Limited Time only

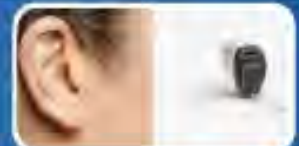
## Treating hearing loss improves...

- ➔ Memory / Reduces the Risk of Dementia
- ➔ Safety and Balance
- ➔ Brain Function / Cognitive Ability
- ➔ Long and Healthy Aging
- ➔ Mental and Emotional Well Being

## Are you a Pensioner / Veteran?

No out of pocket cost to you...

You are eligible to have these tiny hearing aids under the Government Funded Hearing Service Program (HSP)



These days...

**Hearing loss** is more visible than hearing aids

**Free**  
Test

**Free**  
Hearing aid fitting

**Free**  
Trial

## Regular Clinics in Both Medical Centre

Beverley & Brookton	Beverley & Brookton
Vines Medical Practice	Beverley Medical Practice & Saddleback Medical Centre

To book a Free Hearing Assessment

**Call : 1800 11 4327**

Or ask at the reception / your Doctor

**1800 11 HEAR / 1800 11 4327**

**www.starhearing.com.au**



# Beverley Toy Library



Our new toys thanks to our Shire of Beverley Community Grant have been a big hit amongst all the kids.

If you have children or grandchildren visiting for a weekend of fun and you would like some toys during their visit, please contact us as we have some membership concessions available for grandparents and carers.

Take the opportunity to join in gentle activity aimed at general fitness and falls prevention.

## Stay Active with the Beverley Everlastings

Stay Active is a weekly one-hour keep fit session for those who find gentle aerobic, strength, balance and stretching exercise beneficial to their health.

The exercises are designed for over 50s, but younger participants are welcome. Those less mobile or those recovering from accident and illness also find the exercises useful.

Chair exercises are available and participants can opt to do all or some of these.

Stay Active

**Date: Tuesday's**

Time: 9:00am

Place: Beverley Recreation Centre

Cost: \$1

Come along for social-distancing fun activity.

Stay Active is a volunteer community health program coordinated by the Wheatbelt Health Service



Government of Western Australia  
Department of Health

## SHAZMAC PLUMBING PROUD TO BE YOUR LOCAL PLUMBER

Plumbing Licence: PL 5829 Gas Fitter Licence: GF 7422 RHL: L100443  
ABN: 18 531 685 326

For all your plumbing & gas fitting needs

**Phone 0408 189 987**

**PO BOX 116**

**BEVERLEY WA 6304**

**shazmac1@westnet.com.au**

**NO job is too big or too small.**



## RA-AN ENTERPRISES EARTHMOVING CONTRACTOR

Dam sinking  
Dam cleaning & enlargements  
Fence Lines  
Shed sites etc.



Dozer & Excavator Hire  
Dozer with Rake  
Can provide Bobcat - Backhoe - Grader -  
Side Tipper  
For larger jobs 54 tonne Dozer

**Contact: Ray 0428 936 621**





## BEVERLEY EARLY YEARS GROUP

The Beverley Early Years Group is a network that aims to strengthen opportunities for children (0-4) and their families to connect and thrive in our community.

What happens to children in their early years matters a great deal. Improving children's development through the critical early period can have transformative social and economic impacts.

# Storytime

## MARCH EASTER STORYTIME

We certainly had an Easter Egg-stravaganza with Nanna Sandy at our March Easter Storytime with this month's book being.....

### ***Peppa Loves Easter***

It's Easter time and Madame Gazelle had a special Easter surprise for Peppa and her friends after playgroup - Miss Rabbit had organised an Easter Egg-stravaganza!

There was Easter cakes, Easter cards to make, an egg decorating stall and Granny and Grandpa Pig's fluffy newly-hatched chicks, but where was Miss Rabbit? And who was inside the huge Easter egg? Peppa Loves Easter!

Thank you to Jaimee from the CRC for the wonderful craft activities for the kids to take home and Nanna Sandy for making it such a fun and interactive Storytime. The kids all particularly enjoyed trying out the Easter hats.



## APRIL STORYTIME

### ***The Very Super Bear***

***Written & Illustrated by Nick Bland***

There's a monster in the jungle and it's gobbling up the trees! It sounds like a job for THE VERY SUPER BEAR!

For our April Storytime we had a special visit from Mrs Sims where we met The Very Super Bear and his sidekick, Bruce the Goose and joined them on an adventure to save the jungle from the cranky, yellow monster.

All the kids donned their own super capes after the story and made their very own super bears to take home.

It was a BEAR-IFIC morning for everyone with lots of singing and dancing action. Thank you to Mrs Sims for joining us and Jaimee from the CRC for another wonderful craft activity again to enjoy after our story.





## **PRIMARY HEALTH SERVICES**

Available to the community of Beverley

You can refer yourself or your child to the following health professionals:

**Child Health Nurse** - 9646 3200

to make an appointment, Hospital Admin Staff will assist you in setting an appointment time, which will be on most occasions a Monday.

**School Health** – 9641 0200

**Dietetics** – 9690 1320

**Occupational Therapy** - 0429 466 224

**Physiotherapy – a Doctors referral is required** – Please send all referrals to PO Box 142 Beverley or drop them into the Beverley hospital. All referrals are forwarded onto to Northam Hospital where they are prioritised and wait listed. Clients will be acknowledged with a letter informing them of the approximate wait time and will be seen in Beverley

**Podiatry – a Doctors referral is required**

Please send to PO Box 142, Beverley or drop referral to the Beverley Hospital (attendance Fridays) \*\*

**Social Work** – Phone 9690 1320

**Speech Pathology** – Phone 9690 1321

- Services are provided at the Primary Health Building, on the corner of John and Forrest Streets, Beverley. There may be a waiting time for services.
- These services are provided by WA Country Health Service and are free of charge. (Please note that the Podiatry Service is a private practice and is not free of charge - there is a fee at first consultation but the WACHS/Beverley Health Service do not get involved in taking fee payments – only assisting at receiving the referrals for appointment. The Doctor's referrals are usually faxed to the service provider, Como Podiatry, who contact the patient by phone and make an appointment).
- If you have any concerns about your own health or your child's health and development, please phone the relevant health professional to discuss your concerns. Alternatively, you can speak to the Child Health or School Health Nurse, or your GP, to discuss your concerns and to determine the most appropriate referral.

*Avon & Central Primary Health  
Promoting Healthy Lifestyles*



Government of **Western Australia**  
**WA Country Health Service**

# **BEVERLEY HEALTH SERVICE**

## **IS LOOKING FOR**

# **VOLUNTEERS**

Drivers

Around the local area and/or trips to Perth

Day Centre/Hospital/Alex Miles Lodge  
Helping with activities, reading, music, crafts, bus trips, serving refreshments

If you are interested or would like to make further enquiries, then please contact:

Anita Marzocchi on 9646 3213  
(Tuesday/Wednesday) between 8.00am and 4.30pm

1 Sewell Street, BEVERLEY WA 6304  
Letters: PO Box 142, BEVERLEY WA 6304  
Tel: (08) 9646 3200 Fax: (08) 9646 3205  
ABN 28 680 145 816

[www.wacountry.health.wa.gov.au](http://www.wacountry.health.wa.gov.au)

Our Values: Community | Compassion | Quality | Integrity | Equity | Curiosity



*Servicing Beverley & Surrounding Areas  
Local Owner Driver David Johnson  
PH: 0428 995 950  
Email : [Gameoncontracting@gmail.com](mailto:Gameoncontracting@gmail.com)*

*For all your Transport needs:  
Side-tippers, Endtippers, Float  
Liquid Fertilizers, Drop Decks &  
Semi water cart for roadworks-*

*For your Earthwork needs:  
20 tonne Excavator, Grader &  
Loader with Accredited Load Rite System*





Can you help the Beverley Historical Society?

## Recognise Anyone?

Here are some names of students at the State School in 1938 who won prizes for Fancy Dress. Can you match any names to the photo?

Send answers to [bhsdeadfinish@gmail.com](mailto:bhsdeadfinish@gmail.com)

Beverley Times, Friday 4 November 1938, page 2

**Best Senior Set—"Hearts."**—Shirley Doncon, Fay Brown, Jean Robins, Gloria White, Brian Hunter, Dallas Hooper, Cyril Carr, Jim Grover.

**Best Junior Set—"Dwarts and Snow White."**—Rosemary Brown, Margaret Wood, Doreen Fairhead, Marie Simmons, Rod Burgess, Graham Ward, Cyril and Harry Wrangmore.

**Best Dressed Senior Girl—**Judy Fleay—"Little Old Lady."

**Best dressed senior boy—**Bevan Barnsley

**Best dressed pair—**Beryl and John

Vaughan—"Bride and Bridegroom."

**Most original senior girl—**Ruby Allen—"Tip Top Toffee."

**Most original senior Boy—**Doug Clarke—"Hitler."

**Best sustained character—**Lorraine Howell—"Shylock."

**Best dressed junior girl—**Dixie Bremner—"Lavender & Lace."

**Best dressed junior Boy—**Clive Gard—"Prince."

**Best dressed pair—**Max and Brian Sims

**Most original girl—**Valerie Kirkwood—"Lager Beer."

**Most original boy—**Murray Ward—"Jack Frost."

**Best sustained character—**Peter Panten—"Dick Whittington."

**Special—**Neville and Joyce Sims—"Micky & Minnie."

**Special—**Shirley Brody—"Patches."



State School Beverley Standard 374 July 1938



# Moort Wabiny Park

## SKATE CLINIC

COMMENCING

THURSDAY 22ND APRIL 2021

FREE 4 WEEK PROGRAM

FOR AGES 6 - 16 YEARS

ALL WELCOME NO MATTER YOUR ABILITY

PLEASE REGISTER BY COMPLETING THE ONLINE

REGISTRATION PRIOR TO ATTENDING AT

[WWW.SKATEBOARDINGWA.COM.AU](http://WWW.SKATEBOARDINGWA.COM.AU)

CLICK ON THE EVENT IN THE UPCOMING EVENTS

CALENDAR TO REGISTER.

ANY ENQUIRIES PLEASE CONTACT SHIRE OFFICE ON

(08)96461200 OR [ADMIN@BEVERLEY.WA.GOV.AU](mailto:ADMIN@BEVERLEY.WA.GOV.AU)



Department of  
Local Government, Sport  
and Cultural Industries







Go the distance.

No matter how far  
your doctor is.

No excuses

See your doctor if you  
notice anything different  
with your body.



For more information visit  
[www.findcancerearly.com.au](http://www.findcancerearly.com.au)

BEVERLEY EARLY YEARS GROUP PRESENTS

Storytime

Toy Library



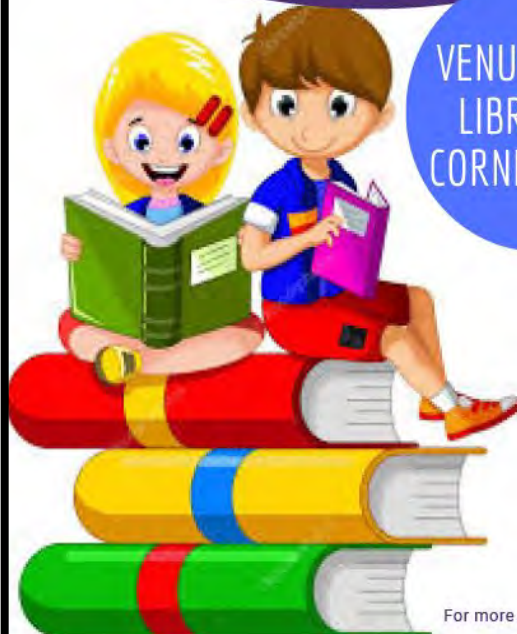
2021 DATES

- 17th February
  - 24th March
  - 21st April
  - 19th May\*
  - 23rd June
  - 21st July
  - 11th August
  - 15th September
  - 20th October
  - 10th November
  - 1st December
- \* National Simultaneous  
Storytime - Venue & Time TBC

FREE!

ONCE A  
MONTH ON  
WEDNESDAYS  
@ 9-30

VENUE: TOWN  
LIBRARY @  
CORNERSTONE



FEATURING:  
STORIES, SONGS, FUN!  
AN INTERACTIVE 30  
MINUTE SESSION FOR  
BEVERLEY KIDS

*All Welcome!*

For more information, contact Kelly on 0428 779 234

AVON GLAZING

Everything Glass...

Windows Splash Backs  
Mirrors & More

Ron Robinson  
0427 185 291

BEVERLEY  
Transport

Your local carrier for over 30 years.

GRAIN, FERTILISER, LIME, HAY,  
WOOL AND SIDE TIPPERS AVAILABLE

Garry & Sarah Miller

0428 464 066

admin@beverleytransport.com.au



## BEVERLEY VOLUNTARY COMMUNITY SERVICES B.V.C.S

1. INFORMATION & WORK REPORTS provided by MAL. G. Roberts PRESIDENT
2. Mobile phone black spots wrote to Hon Christian Porter - Attorney General Member for Pearce. He wrote to Hon Paul Fletcher M.P Minister for Communication. They wrote back to me. All correspondence (copies 3 pages have been handed over to the Shire of Beverley for publication).
3. Justice of Peace: I have been certifying and witnessing documents in the: Shire Office, Vines Medical practice, Beverley Medical practice, under my carport, front verandahs in homes - (B.V.L.S & Crana members), residents from York, Brookton, Northam, Pingelly require my services - some come from Meekathara.
4. CLASS ACTION Law firms: Under authority for many years, I speak for residents who have action pending in the Federal and High Courts. The usual practice is cases keep being postponed and matter go on for years. I have to constantly remind these BIG law firms that many of us DO have serious health problems including cancer, chronic diabetes etc. the defence team of lawyers work for BIG ORGANISATIONS and always plead for more time. For THEIR LITIGANTS at THE end of the day there are no win situations - money do not compensate for trauma & stress.
5. HOME VISITS I do make to those whose needs are urgent, are in wheel chairs and have mobility problems. WILLS - POWER OF ATTORNEY / E.P.A the current advice from trustees and law firms ALWAYS keep legal documents up to date. Some are made out years ago, circumstances change, your wishes change and so on.
6. ESTATE + Grant of Probate: These matters are of a very serious nature and end up in Supreme Court. Please get expert legal opinion, re procedures legal cost, court costs, time factors. I can only help with providing information + procedure based on my 35 years of experience assisting Beverley resident.
7. Sylvia Seddon our Secretary as we all know has been confined to a wheelchair for years now, but has a rock solid 35 years of B.C.S + B.V.C.S Secretary’ also for some 35 years of extensive Community experience in various organisations and our most loyal supporter. By a special and our appreciation to Sylvia will be published in the next Blarney.
8. Verna Mckelvie - Town Secretary: has been extremely helpful in a variety of secretarial work phoning, correspondence receiving and reply to various firms, Govt. Members of Parliament and replying to correspondence. Verna is now delegated to handle all matters in the absence of Mal Roberts- Justice issues seeking legal info & help from politicians will be handled by Mal Roberts
9. Mobile phone functions poor coverage in my letter from concerned residents some were from: Lukin, Harper, Brooking, Richardson, DeLisle, Duffield + parts of Westdale + Hunt Road.
10. CORVID VIRUS: as a Justice of Peace, I am refraining from using public areas. When Mr Steve Gollan and myself are required to witness documents we use a small room in the Shire Office. This venue is a great help when witnessing Wills & Enduring Power of Attorney and other senior documents. This is only a temporary arrangement and the space is NOT an office.
11. I have consistently stated in the Blarney, that I do not offer LEGAL ADVICE and I do not speak for the whole community- members from other Clubs & Association are constantly approaching for assistance, please seek for help from your own committee. Our mission statement is to help the not so fortunate and those who can not speak for themselves. Mal Roberts funds the running costs of B.V.C.S. we do not recover funds & we don’t access donations.

Mal Roberts, Sylvia Seddon, Vera McKelvie

### KARRADALE LIVESTOCK TRANSPORT YORK LIVESTOCK TRANSPORT

ABN 64 054 007 721

We service Beverley, Brookton, York  
& surrounding districts

Available to transport Sheep & Cattle

No job too big or small

Support the local communities

Member of ALRTA

If you need stock moved, Peter would love to  
hear from you - 0428 481 281



### NEED PRACTICAL TRADE ASSISTANCE?

## D & M Services

(Design and Manufacturing Services)

Solving a range of practical needs and problems..

#### Specialising in:

- ✓ Kitchen renovations
- ✓ Shop fitting and modifications
- ✓ Furniture restoration
- ✓ General carpentry
- ✓ Alterations & installations
- ✓ Metal based fabrication
- ✓ Motorhome and Caravan fitouts
- ✓ Pergolas, Decks & Gazebos
- ✓ Designing and planning

**Guy Slingerland**

**0403602335**



Established in 1997, proudly servicing Beverley and surrounding areas



## BEVERLEY GAS + PLUMBING SERVICES

PL 9723  
GF 017690  
BFL 3108

**Beverley Gas and Plumbing is your local plumber  
for all your plumbing and gas needs.**

- Renovations
- Septic and leach drains
- Gas installs and maintenance
- Hot Water
- Blocked drains
- Dripping taps
- Backflow prevention
- Sewerage conversion

**Kodie Fleay**  
**Phone 0418 929 141**

Email [beverleygandp@gmail.com](mailto:beverleygandp@gmail.com)



**OP SHOP**  
**Open Friday's**  
**11.00am - 2.30pm**

### May Roster

May 07

Jan Sherwood, Beverley  
Hoey, Allsa Elston

May 14

Betty Wauchope, Ann  
Bolger, Gail Alabach

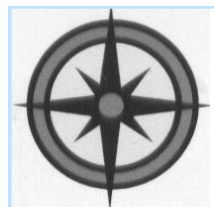
May 21

Glenys Lane, Joy Smith,  
Roma Ladles

May 28

Betty Lobb, Pat Bekkers,  
Helen Revill

All types



All areas

## ALLROUND CONCRETE

**SHED FLOORS, DRIVEWAYS, FOOTPATHS, HOUSE SLABS,  
SILO PADS, FERTILIZER/GRAIN/SUPA SHEDS**

**ROBBIE HIGGINSON**

**MOBILE: 0427 384 977**

**HOME: 9641 2459 FAX: 9641 2339**

**ABN: 26 997 512 874**

**PO BOX 345 YORK WA 6302**

## DJ YATES

**Authentic Heritage Restoration**

**BRICK AND STONEMASONRY  
RESTORATION  
AUTHENTIC REPOINTING OF  
MORTAR, RISING  
DAMP RECTIFIED  
PROPERTY  
MAINTENANCE**



**PHONE DAVE**

**0419 041 542**



Beverley CRC presents

# Marketing Your Business Online

GOAL  
 PLAN  
 ACTION

- SET \$\$ GOALS
- DESIGN A MARKETING PLAN
- IMPLEMENT A MARKETING STRATEGY
- STAY FOCUSED
- HIT YOUR TARGET

17 June 2021  
10.30am - 2.30pm

BOOK NOW ON 9646 1600

\$50 per person includes lunch

## Dawson's Concrete & Reinforcing

“Your Local Beverley Concreter”

- Concrete Formwork & Steel Fixing
- Driveways, Shed floors, Maintenance pits, Silo pads, Super sheds, House pads
- Fully mobile service
- Over 30 Years Experience
- 7 Days A Week
- Professional, Reliable Service

*Phone for a Free Quote*

**SANDY DAWSON**

**Mobile: 0417 375 221**

Email: [pameladawson@bigpond.com](mailto:pameladawson@bigpond.com)

FB: [www.facebook.com/dawsonsconcrete](http://www.facebook.com/dawsonsconcrete)



**Business  
Masterclass**

**Make an impact on  
Pinterest  
with your  
business**



When: Monday 31 May 2021  
Time: 9am to 12pm  
Where: Beverley Cornerstone

Cost: \$30 per person (inc morning tea)  
RSVP: Beverley CRC 9646 1600  
Business Owners & Employees

*ANIMAL HEALTH, CHEMICALS, FENCING, FERTILISER, PET FOOD, SEED, STOCK FEED, WATER EQUIPMENT*

**AVON VALLEY AG**  
LONG LIVE LOCAL

*LOT 502 DE LISLE STREET, BEVERLEY*  
**TRADING HOURS MON-FRI 8AM-5PM**

*CHLOE FLEAY 0400 921 520*  
*BARRY FRASER 0427 940 827*

**AGLINK  
DAVID GRAYS**

*Locals Supporting Locals*

## Incontinence - What does it mean?

**Incontinence** is the **inability** to control when we wee and/or poo and it affects our bladder, bowel, and pelvic floor health. It is one of the biggest health and wellbeing issues in Australia affecting 1 in 4 Australians over the age of 15 years. It is estimated 1 in 6 men are affected by incontinence.

Why is this a problem? The majority of people (blokes in particular) choose not to discuss the issue with a GP or anyone because it is embarrassing and difficult to talk about. In the work we do, we have had many discussions with blokes who have self-diagnosed their urine leakage and are wearing a pad to mask their problem rather than acting and visiting a GP.

Poor bladder control can happen due to many health issues:

- Enlarged prostate – as we get older the prostate gets larger and for some men (1 in 4) this will cause bladder problems (refer Chapter 9 of this book – Understanding our Prostate).
- Prostate Cancer – incontinence is a common occurrence post prostate surgery.
- Poor pelvic floor muscles (EEK! - as a bloke do I have a pelvic floor?).
- Nocturia – having to wake up at night to pass urine and can be a part of many common medical conditions.
- Some medicines may cause the bladder to store urine, putting pressure on it.
- Diabetes.

A lot of blokes will avoid social activities and be upset and/or anxious by their incontinence. If you observe any changes in your bladder control, make an appointment to talk to your doctor or contact the National Continence Helpline as they can advise you on the most appropriate health professional to see. The treatment for incontinence will depend on its cause, which in discussion with your doctor or other health professional can lead to you choosing the best option for you.

There are treatment options to regain control, improve and manage incontinence:

- Prostate surgery – If you have an enlarged prostate, there are many surgical options.
- Pelvic floor training – pelvic floor muscle training strengthens the muscles to help control both the bladder and the bowel. We all need to have strong pelvic floor muscles.
- Bladder training - can help teach the bladder to hold more urine without leaks and urgency.
- Medicines – there are a range of medicines that can help with bladder control.
- Continence products – these are available to help cope with leaks etc.

Incontinence may be preventable, many bladder and bowel issues can be cured, managed and/or made significantly better. It may start as a bit of after dribble at the urinal, but that is a sure sign we need to have a chat with our doctor and eliminate the causes for it. You are not alone.

**For more men's health & wellbeing information, check out our Working with Warriors® Podcast Series** which is based on conversations around men's wellbeing and health from our Working with Warriors® education sessions. The short podcasts, regarding a man's approach to his wellbeing and health, are now available to listen via our website or on Spotify, Apple Podcasts, Google Podcasts, and numerous other podcast directories.

Owen and the Team

The Regional Men's Health Initiative  
delivered by Wheatbelt Men's Health (Inc.)

PO Box 768, Northam WA 6401

Phone: 08 9690 2277

Email: [menshealth@4blokes.com.au](mailto:menshealth@4blokes.com.au)

[www.regionalmenshealth.com.au](http://www.regionalmenshealth.com.au)



# History

## Vincent Street

As part of the Heritage Trail component of the Vincent Street Streetscape Project, The Shire of Beverley is seeking photos or video footage of **Vincent Street** (from Hunt Road to the Bridge) from **ANY ERA!**

If you would like to share a photo and are happy to sign a general release form for us to use a copy of your photo or video then please contact Stefan 9646 1200 or email [planner@beverley.wa.gov.au](mailto:planner@beverley.wa.gov.au)

*Thank you to those who have already contributed!*



**BEVERLEY COMMUNITY GARDEN**

**FUNDRAISING RECYCLE PICKUP**



If you have any plastic or glass bottles or cans to be recycled, please consider donating them to your Community Garden.

We will pick them up from you if you ring us.

Betty 0400 569 971  
Maureen 0429 460 073  
Dorothy 0429 989 031.



**SHIRE OF BEVERLEY**

**ADVERTISING ON CORNERSTONE DIGITAL DISPLAY**

Advertising is available for local business or for a local profit generating event  
\*Conditions apply

**LOCAL EVENTS**

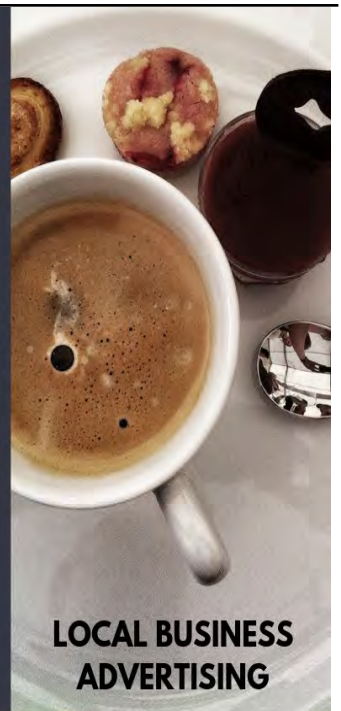


**LOCAL BUSINESS ADVERTISING**

**FEES**  
\$50 ex GST for set-up & maintenance and \$50 ex GST per calendar month (paid in advance) to display is paid.

Community information and paid advertising will run on a continuous loop between 6.00am and 8.00pm being the operating period (total 14 hours).

A display will run for a maximum 10 seconds



TA5515854



**Phoenix Building Systems**  
Global Specialists in Modular Steel Buildings

- WA owned family business
- Registered Builder
- Servicing regional WA
- On Site - Expert Advice
- Council Approvals
- Concrete, Water & Solar Options

**0427 424 672**

admin@phoenixbuildingsystems.com.au



**www.phoenixsheds.com.au**  
**/drive-through-sheds**



**BEVERLEY AND DISTRICTS WOOL COMPANY**

- Broker Independent clip marketing advice
- On farm valuation and purchase of clips and oddments crutchings; Merino and Crossbred, small and large quantities
- Same day payment
- Shearing advances

**Call Mike Fairclough**

**0429 635 999**





# Beverley District High School

Independent Public School

*'Working in Unity to make a difference for every child'*

*BDHS sits on the lands of our Noongar people and we acknowledge them as the traditional custodians of the Ballardong region.*

## Beverley Student School Leaders Attend Zero2Hero Camp



Bobbie and Anthony (BDHS Heads of School) were nominated and supported by BDHS staff, to apply to attend the **zero2hero Leadership Camp**. The panel recognised the strong leadership attributes and motivation to affect change that came through strongly in both students' applications, by accepting them into the program. Both Bobbie and Anthony attended the camp on the Term 1 school holidays. The camp aims to bring together students, mentors, and experts to equip young people, to become empowered leaders and ambassadors

of positive mental health, amongst their peers and community. How fortunate we all are, to have opportunities such as this for our students to access and share amongst our community to positively impact mental health! We are very proud of these students and the strength that they show every day in being strong leaders of Beverley DHS. Well done team, this was not only a great opportunity, but a great achievement for two rural students! Their personal growth and achievements through this camp were phenomenal.



### BDHS P&C

Our P&C have been busy continually managing the **'Containers for Change'** initiative! Thank you to everyone who has and continues to, support this fundraising effort. ***There is always room in the P&C trailer parked on Lennard Street if you wish to drop off any cans or bottles for recycling.*** A huge thank you to the Tennis Club, Football and Netball Club for allowing us to collect containers at their recent community events. This has been a successful ongoing fundraiser.



Be sure to drop into the **2021 P&C Cake Stall** outside the IGA on 15<sup>th</sup> May. There will be a delicious range of baked items and treats, raffles for money and wood, as well as some bags of sheep manure for sale. Donations of baked goods, plants and the like are most appreciated and can be dropped off at 8am on the day. If you are not ready for the chilly winter months approaching, make sure you get your tickets in the



**P&C Annual Wood Raffle!** There will be tickets on sale through the school (sent home with students and available at the front office), at the Cake Stall and at the Faction Cross Country (Town Oval on 21<sup>st</sup> May).

Once again, the school will be co-hosting the **Australia's Biggest Morning Tea** at the Faction Cross Country together with Mrs Sandy Woods and her team! Come along and enjoy a cuppa and raise funds for cancer research whilst cheering on our cross-country runners! *Donations of baked goods are most welcome.*







### BDHS ANZAC Service

Beverley DHS school leaders proudly hosted our School ANZAC Service on 23<sup>rd</sup> April, inviting all parents, families, and community members to join us in paying our respects to those who have, and still are, fighting for the freedom that we as Australians, enjoy every day.



We were pleased to have many special guests from our RSL, Shire, School Board, P&C and community attend our service. Our Secondary students proudly attended in their Cadet uniforms as a sign of respect to all those in uniform past and present. We would like to thank all those who donated beautiful flowers for our student made ANZAC service wreaths.



**Lest We Forget.**



### School Oval Reconstruction

After many years of lobbying for the school to receive a reconstruction and upgrade to our School Oval, we have been approved for a new oval reconstruction. The total cost of the project is \$200 000.00, and the expected completion date will be for the commencement of the school year in 2022. This is a great outcome for the school, and we wish to extend our congratulations, and sincere gratitude, to all who advocated over recent years for this project to be commissioned. We are looking forward to seeing the draft plans, and the commencement of the reconstruction. Watch this space!





### Shire of Beverley 2021 Council Meetings

Meetings commence at 3pm

Tuesday 27 April 2021

Tuesday 25 May 2021

Tuesday 22 June 2021

Tuesday 27 July 2021

Tuesday 24 August 2021

Tuesday 28 September 2021

Tuesday 26 October 2021

Tuesday 23 November 2021

Tuesday 14 December 2021

### Card Games at CWA

#### **SAMBA**

**WHEN:** Saturdays

**TIME:** 1.00pm

**WHERE:** CWA Hall  
Afternoon Tea provided.  
Phone 9646 1271

#### **BRIDGE**

**WHEN:** Monday's

**WHERE:** CWA Hall

# LEH



## EARTHMOVING

LOCAL BUSINESS, SERVICING BEVERLEY FOR OVER 10 YEARS

## Beverley Earthmoving & Grading

### GRADER - BACKHOE - BOBCAT TIP TRUCK - EXCAVATOR SIDE TIPPER - DOZER

ROAD BUILDING AND MAINTENANCE

FIRE BREAKS - CONTOUR BANKS - ROADED CATCHMENTS

HOUSE PADS - SEPTIC SYSTEMS - SAND, GRAVEL AND BLUE METAL  
DAM BUILDING AND CLEANING

**CALL- DAN WILKINSON**

**0417 093 090**

**EMAIL- DAN.ZOE@BIGPOND.COM**

**WWW.FACEBOOK.COM/LITTLECOHILLEARTHMOVING/**

### Unique Strokes W.A. Painting & Decorating

Reg. No. 4236

ROB BAIN

QUALIFIED LOCAL TRADESMEN

For Guaranteed Traditional  
Workmanship & Prompt Free Quotes  
**Phone: 08 9647 2102**  
**Mobile: 0418 904 013**



freemasonstavernbeverley@westnet.com.au

Phone 9646 1347

104 Vincent Street

Beverley WA 6304

Geena 0448 281 158

Steve 0448 281 044

*Weekdays*

**MONDAY - FRIDAY  
EVENING MEALS**

**OPEN FROM 4.00PM  
6.00PM - 8.30PM**

*Weekends*

**SATURDAY & SUNDAY  
LUNCH  
EVENING MEALS**

**OPEN FROM 11.00AM  
12.00PM TILL 2.00PM  
6.00PM TILL 8.30PM**

THE TRADING HOURS ARE SEASONAL. PLEASE ENQUIRE FOR FUNCTION BOOKINGS.  
Times are negotiable for bookings of 15+



Visit the  
**Dead Finish Museum**



**Oldest building in Beverley, built in 1872 as the "Wheatsheaf Inn".**

Corner of Great Southern Highway and Morrison Street, Beverley WA

**10 furnished rooms of memorabilia of Beverley town and district.  
Featuring the Beverley Room, a large collection of photos and history  
of local organisations, school photos and identities.**

ADMISSION ADULTS \$2

CHILDREN FREE WHEN ACCOMPANIED BY AN ADULT

Open 11.00am to 3.00pm Sundays or by appointment

Mid March to November.

Closed from December to early March.

Parking available on Morrison Street. AVMCF Venue.

Contact: [bhsdeadfinish@gmail.com](mailto:bhsdeadfinish@gmail.com)

0427 411 881- Joy

9646 1149 - Maree

9646 1075 - Delys



**Be very historic**

**Be verley WA**  
Be very you

**York Chiropractic**

MacLachlan Centre – 4 Trews Road



Clinic available every week

**9641 1500**

**Dr Alexandra (Sacha) Browne**

*B.Sc (Chiropractic) B.Chiropractic*



Also available in Cunderdin and Merredin

**BEVERLEY  
QUILTING GROUP**

We meet on Tuesday's at the Masonic Lodge in the  
back room. We start at 9.30am and finish at 2.00pm

\$2 donation per session and BYO lunch.

For further information contact Jan Sherwood on

0438 019 510

**TAX RETURNS**

**FORTIZ BUSINESS SOLUTIONS**

**(Registered Tax Agent & Certified Public Accountant)**

**Tax Returns for all entities  
Business Consulting  
Software solutions / setup  
Bookkeeping / Accounting**

**OFFICE HOURS:**

**FRIDAY 9.00am – 4.30pm**

**101 VINCENT ST (Bankhouse) BEVERLEY**

**Please phone for an appointment**

**9646 0282**

**Mulesing  
Contractor**

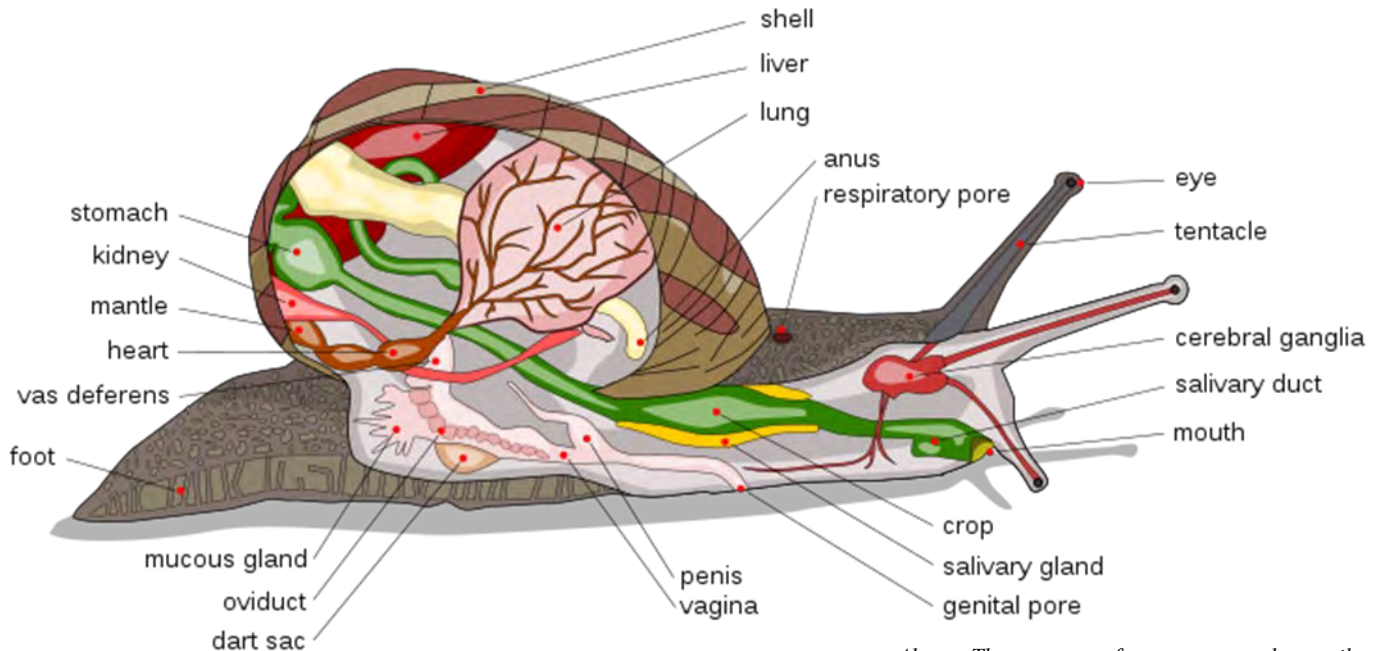


**For all your  
Mulesing Requirements  
Beverley, York  
and surrounding areas**

**Contact Terry Slade**

**0427 635 065**

## Snail facts



Above: The anatomy of a common garden snail.

### What happened when the snail lost its shell? It began to feel sluggish.

Snails and slugs are incredibly similar, and whilst there are always exceptions to the rule with biology, the main difference between them (you guessed it) is that snails have an external shell.

The gastropods, commonly known as snails and slugs, belong to a large taxonomic class of invertebrates within the phylum Mollusca called Gastropoda. This class comprises snails and slugs from saltwater, from freshwater, and from the land.

Australia boasts more than 2500 species of land snails.

### What's inside your shell?

A snail's shell is made up of calcium carbonate. A common substance found in rocks as the minerals calcite and aragonite (most notably as limestone) and is the main component of eggshells, snail shells, seashells and pearls.

The shell grows additively, by the addition of new calcium carbonate, which is secreted by glands located in the snail's mantle. The new material is added to the edge of the shell aperture (the opening of the shell).

The size of a snail's shell helps in determining its age and most snails have shells that spirals out from the centre in a clockwise direction.

### No battle of the "sexes"

Most land snails are hermaphrodites, with both male and female sexual organs in the same body. When common garden snails (*Cornu aspersum*) mate, a penis is extruded from the side of each head as the snails join together, and sperm is exchanged.

### Who are you?

Our Department maintains surveillance for exotic snail species. If you see a snail you don't recognise, please grab it, photograph it and report it!

## Report suspect pests



MyPestGuide™ Reporter  
via app or online  
[mypestguide.agric.wa.gov.au](http://mypestguide.agric.wa.gov.au)



Pest and Disease Information Service  
(08) 9368 3080  
[padis@dpird.wa.gov.au](mailto:padis@dpird.wa.gov.au)



# Countryside Memorials



Cast Stone  
Granite  
Marble  
Plaques

Added Inscriptions  
All Repairs and Restorations

25 YEARS PROFESSIONAL EXPERIENCE  
FREE DESIGN AND QUOTE

Servicing All W.A. Country Areas  
**9696 0466**

**OXTER SERVICES**  
[www.oxter.com.au](http://www.oxter.com.au)  
[oxter@westnet.com.au](mailto:oxter@westnet.com.au)

# Mia DAVIES MLA

Leader of The Nationals WA

**CENTRAL WHEATBELT**



**Northam Office**  
171 Fitzgerald Street  
(PO Box 92)  
Northam WA 6401  
Ph 08 9622 2871  
Fax 08 9622 1668

**Merredin Office**  
The Old Town Hall, Mitchell St  
Merredin WA 6415  
Ph 08 9041 1702  
Fax 08 9041 2554  
Freecall 1800 673 914

[mia.davies@mp.wa.gov.au](mailto:mia.davies@mp.wa.gov.au)  
[www.miadavies.com.au](http://www.miadavies.com.au)  
MiaDaviesMLA  
[facebook.com/MiaDaviesMLA](https://www.facebook.com/MiaDaviesMLA)

**THE NATIONALS** for Regional WA

Authorised by M.Davies, Northam Boulevard Shopping Centre, Fitzgerald Street, Northam.

## VALLEY FORD

- NEW & USED VEHICLES •
- SERVICE & PARTS •

**9622 5588**  
[www.valleyfordnortham.com.au](http://www.valleyfordnortham.com.au)

Cnr Peel Tce & Fitzgerald St, Northam

## WANTED



### BLOWNOUT SHEARERS

Contact: Jack Dugan Phone: 0450609281

Email: [surebetss@hotmail.com](mailto:surebetss@hotmail.com)

Shearing services provided, cost plus rate or cocky shearing, full crew up to five stand available, clean, tidy, professional 25 years industry experience.

## NORTHAM HYUNDAI

SALES ★ SERVICE ★ PARTS

**9622 5588**  
[www.northamhyundai.com.au](http://www.northamhyundai.com.au)

37 Fitzgerald Street, Northam

## PURLOWE TINETTI FUNERALS .com



Cremations & Burials

Country or City

Pre-paid Funerals

Call the Tinetti Family  
**9622 1411**

Arranged in your home or  
264 Fitzgerald St Northam



AUSTRALIAN  
FUNERAL  
DIRECTORS  
ASSOCIATION



**Anglican Parish of Beverley/Brookton**

**Times of Services for:**

**MAY 2021**

DAY	CHURCH LOCATION	TIME	SERVICE
Saturday, 1st May	St. Mary's Beverley	7.00pm	Evening Service
Sunday, 2nd May	St. John in the Wilderness West Dale	9.00am	Prayer and Praise
Sunday, 2 <sup>nd</sup> May	St. Mark's Brookton	8.30am	Prayer and Praise
Sunday, 2nd May	St. Mary's Beverley	9.00am	Prayer and Praise
Sunday, 9th May	St. Mary's Beverley	9.00am	Morning Prayer
Sunday, 9th May	St. Mark's Brookton	8.30am	Morning Prayer
Sunday, 16th May	St. Mary's Beverley	9.00am	Prayer and Praise
Sunday, 16th May	St. Mark's Brookton	8.30am	Prayer and Praise
Sunday, 23rd May	St. Mark's Brookton	8.30am	Prayer and Praise
Sunday, 23 <sup>rd</sup> May	St Mary's Beverley	9.00am	Prayer and Praise
Sunday, 30 <sup>th</sup> May	St Mark's Brookton (no Service at St Mary's)	9.00am	Holy Communion

Telephone contacts : Beverley - 0484 849 159 or 0419 194 420

Brookton - 9642 1373 or 9642 2357

All mail including St. Mary's Society please address to PO Box 293, Beverley 6304

Please go to our web site for more details

[www.beverleybrooktonanglicanparish.org](http://www.beverleybrooktonanglicanparish.org)

**BEVERLEY  
REAL LIFE  
CHURCH**



*Living life with  
Christ*

*All Welcome  
Every Sunday  
10 am*

**50 Hunt Road, Beverley**



**CATHOLIC CHURCH**

Service in Beverley  
8:00am every Sunday at  
Beverley Sacred Heart Church  
Lukin Street, Beverley



**BEVERLEY ELECTRICAL SERVICES**

**EC 006578**

*Proudly servicing Beverley and surrounding districts since 2010, this locally owned family business can help you with all your Electrical needs*

Karl and his team offer

- Cel-Fi Mobile Phone Boosters
- Quality LED Lighting Solutions for any application
- Split Air Con Installations
- Trenching for underground power & water pipes
- Quality Solar Systems
- Telephone & Data Cabling
- PLUS we cover all your general electrical installation and maintenance requirements

**0429 887 535 or  
9646 1222**

4 De Lisle Street, Beverley  
sales@beverleyelectrical.com.au



**THE RELIGIOUS  
SOCIETY OF FRIENDS  
(QUAKERS)**

Beverley Friends Meeting  
Old Catholic School Rooms  
Dempster Street

Meeting for Worship  
SUNDAY at 10:30am

For more information & enquiries  
phone 0418 387 266



BEVERLEY GOLF CLUB

04, 05 & 06 AUGUST

*Avon Valley*  
**LADIES GOLF CHAMPIONSHIP**

*2021*

As everyone is aware, the above event as fixtured for 2020, but unfortunately COVID ruined our plans, so hopefully this event will go forward this year.

THANKS TO THE FOLLOWING BUSINESSES AND INDIVIDUALS WHO HAVE BEEN GENEROUS WITH THEIR SUPPORT.

SHAZMAC PLUMBING, BEVERLEY TRANSPORT SERVICES, DUNNINGS FUEL - NORTHAM, WHITFERT FERTILISERS, FUEL DISTRIBUTORS YORK, HON. MIA DAVIES, CHRISTIAN PORTER MP, AGLIME OF AUSTRALIA, BEVERLEY GAS & PLUMBING, PURSLOWE & TINETTI FUNERALS, JOHN ISLIP WEST COAST WOOLS - YORK, WFI - BEVERLEY, AND CAPE VILLAS - DUNSBOUGH

**BROOKTON  
PLUMBING**

ABN: 37 675 595 336

FOR ALL YOUR  
PLUMBING MAINTENANCE  
AND GAS FITTING NEEDS

\*PLUS SEPTIC WASTE  
REMOVAL

PHONE:  
SEAN 0413 480 543 or  
NATASHA 0422 013 889

PL: 7130 GF: 006947 SWR: T235

**C & B TRANSPORT**

DELIVERING GENERAL FREIGHT AND CHILLER GOODS

3 DAYS PER WEEK OR AS REQUIRED

TO

**BEVERLEY, BROOKTON, PINGELLY**

FROM

**PERTH DEPOT CANNINGVALE MARKETS**

PLEASE CONTACT PAUL BALDWIN

ON

**0417 953 968 or 08 9646 0461**

**BIG ENOUGH TO DO THE JOB SMALL ENOUGH TO CARE**

# BEVERLEY LADIES GOLF CLUB

Hello and welcome to the Ladies Golf Snippets.

Firstly, apologies to Fred Bremner as in the fixture book, Fred is listed as donating the trophy for the Eclectic competition, but this is not the case. I would like to thank Fred for donating this trophy for a number of years. Many thanks once again Fred. Your support was much appreciated.

Secondly, I forgot to acknowledge John Islip as one of our sponsors for this year's Avon Valley. Thank you very much John. We appreciate it.

Thirdly, I would like to thank our hard working course committee who have coordinated working bees on our course. It was great to play golf on Tuesday with marked fairways. Thanks everyone!!!!

I would like to acknowledge Avon Valley Ladies Championship Sponsors-Aglime, Shazmac Plumbing, Beverley Transport Services, Dunnings Fuel, Whitfert Fertilisers, John Islip, Fuel Distributors York, Honorable Mia Davies, Christian Porter MP, Purslowe and Tinetti, WFI-Charmaine Willing, Beverley Gas and Plumbing, West Coast Wools-York, Cape Villas-Dunsborough (this is a 2 day raffle for a 2 day stay).

We are very happy to obtain sponsors from outside of Beverley. Please support these businesses if you can.

Welcome to Dina Barrett-Lennard who is going to join us in 18 holes golf. You are going to either love golf or hate it with a passion, I am sure that it will be the former.

Welcome back to all ladies who have played golf over the past few years.

## **Coaching**

Rob Farley will once again offer coaching, but this year the layout will be slightly different to other years. The cost remains the same-\$10 for two hours coaching session. If you have never touched a golf stick and you have always wanted to take up the game, this is a great chance to have a go. Don't worry about not having sticks, these can be organised for you.

**The first coaching session will be Friday 14 May.**

**The second session will be Friday 28 May.**

There will be two more fixtured dates but at the time of writing, I had not been informed. I will keep everyone posted via Facebook and Beverley Bulletin.



## E Squire Contracting Services

Water Supply  
Windmills & Accessories  
Solar Pumps:  
Sales, Service, Installation  
Fencing & Yards  
Trenching & Poly Pipe Laying

**E Squire Contracting Services  
Beverley and surrounding districts**

**Phone: 9646 0800**

**Errol Squire 0438 682 687**

## WESTDALE TIMBER

T/A R.L. & T.L. TAMBLYN ABN. 106 854 06

### TREE TRUNKS REMOVED TIMBER SLAB SALES

PLEASE DON'T BURN UP GOOD USEABLE TREE TRUNKS  
SAVE THEM FROM THE CROPPING CLEAN UP FIRE  
DON'T LET THEM ROT AWAY TO WASTE  
I WILL CHAINSAW THE TRUNK OUT OF THE TREES  
LEAVING THE BRANCHES FOR YOU TO PUSH ONTO STUMPS  
TO EASILY BURN UP

300MM AND LARGER TREE TRUNKS  
WANTED DEAD OR ALIVE BY THE TRUCKLOADS  
STANDING DEAD OR STORM WINDFALL TREES REMOVED  
MARRI/RED GUMS, JARRAH, WANDOO/WHITE GUMS,  
SHEOAK, TUART, BLACK BUTT AND PINES

*Save yourself time and effort.*

**PLEASE CALL RICKY 0419 903 829**



## Results

Tuesday 13 April	18 Hole- Stableford Winner: Valda Morton 31 points 9 Hole-Stableford Winner: Gerry Anderson 18pts Congratulations to both of you.
Tuesday 20 April	Delys Kilpatrick Trophy 18 Hole Winner: Valda Morton 35 pts Runner Up: Lyn Mactaggart 34 points <b>Many thanks to Delys for donating this trophy.</b> 9 Hole Stableford Winner: Gerry Anderson 21 points Well done Valda and Gerry.

**Fixtures : 18 Holes tees off at 10.30. Please be ready by 10.15. 9 Holes tees off at 12.**

Date	Competition
Tuesday 04 May	<b>Ali Lewis Trophy</b> Monthly Medal Long Drive Commences Stableford
Thursday 06 & Friday 07 May	<b>Regional Seniors Manjimup</b> - Yvonne Hobbs, Marg Peck and Sera Minchin will be playing.
Tuesday 11 May	Sera Minchin and Yvonne Hobbs Trophy Travel Tree <b>4BBB Stableford</b>
Tuesday 18 May	Maxine Watts Trophy 2nd Silver Spoon, 2nd International Bowl, 2nd Putting
Friday 21 May	Tammin Open Day
Tuesday 25 May	Val Hagan Trophy - Par
Tuesday 01 June	Lorna Barrett-Lennard Trophy Monthly Medal - Stableford

## Fixtures

Apologies to Valda Morton and Jo Sims. There is an error in the fixtures, Jo Sims has been listed twice as a trophy donor, but this is not the case. Jo Sims Trophy is scheduled for Tuesday 21 September and Valda Morton's Trophy is on Tuesday 14 September.

## Old Boys Dinner

Once again this was a huge success for our club. I would like to thank Jane Murray for organising us and Heather McLean for spending the whole day helping Jane. Many thanks to some of our ladies for helping on the night and thanks to the ladies for providing soup and salads.

**Until next month, Be Very Straight**

**Sera Minchin- Ladies Captain**

Located behind the Beverley Medical Practice Cullen House  
106 Forrest Street Beverley.



**Open 8.00am - 1.00pm**  
**Monday, Wednesday & Friday**

**All enquiries to Phlebotomist - Sue Ph: 9646 0724**  
**Please note that Western Diagnostic Pathology will accept all pathology collection forms.**

# FIRST AID FACT SHEET

## Sprains and Strains

A sprain is a severe wrench or twist of the ligaments, such as an ankle, wrist or other joint, that causes pain and swelling.

A strain is a force tending to pull or stretch muscles or tendons causing damage.

It can be difficult to tell whether the injury is a fracture, dislocation, sprain or strain. **If in doubt, always treat as a fracture.**

### Caused by

- + Falling and landing on arm.
- + Fall on the side of the foot.
- + Twisting a joint.

### Signs & symptoms

- + Pain.
- + Swelling.
- + Bruising.
- + Loss of power.
- + Tenderness.
- + Muscle spasm.

### What to do

1. Follow DRSABCD St John Action Plan.
2. Rest and reassure the casualty.
3. Manage as a fracture if any doubt.
4. Follow the **RICE** management plan:
  - + **REST** the casualty and the injured part.
  - + **ICEPACK** (cold compress) for fifteen (15) minutes.
  - + **COMPRESSION** bandage after the icepack – apply firmly and extend well beyond the injury.
  - + **ELEVATE** the limb.

### Rules when using icepacks

- + Wrap icepack in a damp cloth.
  - + Apply to the injured site for fifteen (15) minutes and then reapply every two (2) hours for first twenty-four (24) hours.
  - + Never apply ice directly to the skin or onto an open wound. If no ice is available use a cloth wrung out in cold water – this will need replacing every ten (10) minutes.
5. Seek medical attention if in doubt or if no improvement after RICE.

 In a medical emergency call **Triple Zero (000)**

Book a St John first aid course today | (08) 9334 1233 | [stjohnambulance.com.au](http://stjohnambulance.com.au)

Information provided is as per Australian Resuscitation Council Guidelines. These first aid protocols are for the Australian market only. All care has been taken in preparing this information but St John takes no responsibility for its use. This information is not a substitute for practical first aid training with St John.



## BEVERLEY NETBALL CLUB

Our team that are to play in Northam, are set to play their first game on Saturday 01 May.

The mid week netball season is due to commence on the 19 May, with potentially four teams.

We are looking for players or umpires, please contact Jo Copping 0438 972 335.



## Be very safe



## Beverley WA


Be very you

# SARAH SOMERS

## LAWYER

SERVING THE WHEATBELT COMMUNITY

- Family Law - Divorce - Separation
- Property Settlement - Restraining Orders
- De Facto Relationships
- Children's Issues - Contact/Residence
- Competitive hourly rates
- Reduced fee for Initial Consultation

-  85 Fitzgerald Street, Northam WA 6401
-  9622 9687
-  sarahsomers@iinet.net.au

## ROYAL ANTEDILUVIAN ORDER OF BUFFALOES



**GLE (Inc)**  
QUAIRADING BEVERLEY NO.163

We meet the first Wednesday of every month at the Masonic Lodge, Hunt Road, Beverley

*The objects of our order are Philanthropy and Good Fellowship.*

For more info contact

Tom 0419 945 240



# THE BEVERLEY BOWLING AND CROQUET CLUB



The Bowling Club held its annual Carnival Weekend over Saturday 17 and Sunday 18 April.



On the Saturday was the Ferndale Farming Co & Beverley Electrical sponsored pairs with 14 teams competing. After a near perfect day for bowls and very good greens, at the end of 52 completed ends, spread out over a morning and afternoon session, the runners-up were Mark Petchell & Geoff Rayner from Beverley. Winners being Steven Minchin (Beverley) & Jarrad Minchin (Osborne Park)

Left to right Steven Michin, Richard Smith (representing Ferndale Farming Co) and Jarrard Minchin



Sunday the Emfert Fertilisers & Karradale Transport sponsored 4's was played with 12 teams competing in another near perfect day. At the completion of 48 ends, spread out over morning and afternoon session, the runners-up were the team of Anthony & Russell (Wylkatchem), Dozer (Tammin) & Sean (Beverley). Winning team Peter (Beverley), Steven (Beverley), Jarrard (Osborne Park) & Bob (Bunbury).

Left to right Peter (Beverley), Steven (Beverley), Jeff Murray (Club President), Jarrard (Osborne Park) & Bob (Bunbury).

It was pleasing to see visiting players from around the Wheatbelt, Metro area & the southwest competing over the weekend.


Many thanks to our sponsors Ferndale Farming Co, Beverley Electrical, Emfert Fertilisers & Karradale Transport, who support this great weekend of bowls annually.

## BEVERLEY DEZIGN

Renovations,  
Alterations, BBQ's,  
Brick Fences, Steps,  
Retaining Walls,  
Brick paving laid in mortar

**Phone**  
Michael 0407 645 001  
Barry 0417 181 724





VALLEY AIR  
CONDITIONING  
& REFRIGERATION

0408 755 466

Supply and Installation of all types of air-conditioning and refrigeration systems. Split, Ducted, Evaporative, service and repair to domestic, industrial and commercial.

Throughout the Avon Valley and Wheatbelt, no job too far, call Mark for a free quote

Email [valleyaircon@outlook.com](mailto:valleyaircon@outlook.com)      ARC Lic AU42118

# Beverley Golf Club

## Results for April

A field of 18 players competed for The **T-Bone and Sons Opening Day Trophy** which this year was held on Sunday 28 March. The team of Ken Bradley, Troy Worboys and Mike Carthew won the day with a nett score of 59½ (Gross 77). They narrowly edged out Adrian Lister, Darrell Hagan and Graeme Hagan who carded 60½ (67).

The **Darryl Sims Trophy** Stableford event was played on Saturday 03 April. Ken Bradley won the day from ten other members with 36 points. Equal runners-up were Mike Carthew and Stephen Gollan who both scored 32 points.

A Russian Stableford event was held on Saturday 10 April. Eighteen players competed to decide the winners of the **Alan Hammond Trophy**. Terry Woods and Chris Pepper took home the award with 60 points. Second place went to Kevin Elliott and donor Alan Hammond (57).

On Saturday 17 April, fifteen players took on the course for the **David Adams Trophy** par event. Ken Bradley, having a good season so far, was again successful with a score of +4. Steve Johnston was runner-up with +3.

On Saturday 24 April we held our Club Members Day. Ten players competed in an American Foursomes event which was won by the team of Darrell Hagan and Stephen Gollan. They returned a card of 72¼ Nett (Gross 79) beating runners-up Chris Lawlor and Ken Bradley 74 (92).

On ANZAC Day the club held the annual **Diggers Cup Trophy** event generously sponsored again by **Lew Shaw**. Seventeen members vied for the trophy but Stephen Gollan will have his name engraved on the Diggers Cup after scoring 40 Stableford points on the day. Paul Burns took second place with 38 points.

## Scroungers

The Scroungers Summer Championship season concluded on 31 March. **Fred Bremner** has kindly donated the Champion's trophy each season and we thank him again for his generosity this summer. The champion player for the 20/21 summer was Mark Kont with 91 points. Runner-up was Mel Vivian with 89 points.

The 2021 winter season has now commenced and continues on Wednesday and Friday afternoons.

Scroungers results for April:

Wednesday 07 – 14 players – won by Chris Pepper – 15 points

Friday 09 – 5 players – won by Ken Bradley – 14 points

Wednesday 14 – 16 players – jointly won by Alan Hammond and Alan Scales – 14 points each

Friday 16 – 6 players – jointly won by J Donovan, Luke Gollan, Mike Carthew and Chris Lawlor – 11 points each

Wednesday 21 – 18 players – won by Phil Bateman – 16 points

Friday 23 – 6 players – jointly won by Mike Carthew and John Donovan – 14 points each

At the time of writing, the leading point earners in the **2021 Fred Bremner Winter Championship** are Alan Hammond (26 points) Paul Burns (24) and Chris Pepper (19).

Scroungers golf is played at 4.00pm on Wednesdays and Fridays. We play six holes with an emphasis on the more social aspects of the game. Any players, new or experienced, are welcome to join us.

## Course Maintenance

Thanks to the efforts of our maintenance crew the course is in excellent shape. The often heard comment is that the course has not looked this good in decades. Kudos to Mike Carthew, Terry Woods and Fred Sing for arranging heavy equipment and getting the work done. Thanks are also due to Terry Winfield and John Donovan for their unstinting work around the course.

## Busy Bees

The committee has set aside May 02, May 16 and May 30 (every second Sunday in May) as busy bee days. The main objective is to clear the fairways of rocks, sticks and other items that could damage our



new mower and to tidy up loose material around the course. It would be appreciated if every member could set aside a few hours from 9.00am on each of or just one of the above dates to assist in this work. Trailers, rakes, chainsaws, etc. will also be useful. All help will be appreciated.

### May Fixtures

Saturday 01	Always Green Trophy 1st Qualifying Round - Club Championship	Stroke
Saturday 08	Garden Gnome Trophy (3 Stick Competition)	Stableford
Saturday 15	Beverley Electrical Services Trophy (Arrange own partners)	Canadian Foursomes
Saturday 22	Belhus Trophy – Four Ball Better Ball (Arrange own partners)	Stableford
Saturday 29	John Donovan Trophy 2 <sup>nd</sup> Qualifying Round – Club Championship	Stroke

### New Members

New members and visitors are encouraged to join us any Wednesday or Friday at 4.00pm for Scroungers or Saturday afternoons at 12.30pm for 18 holes. Any further information can be obtained by calling Mark Kont on 0490 037 810.

The Beverley Golf Club would like to acknowledge the contributions of

- Game On Contracting
- Geoff Bremner
- Beverley Transport
- Graeme Hagan
- Ian and Judy Williams
- Emfert
- Brett Jenkin - Agronomist
- The Three Painters

To the ongoing maintenance and enhancement of our golf course and buildings.

## Now Open



BEVERLEY  
PHYSIOTHERAPY

**Kahlia Ferguson  
Physiotherapist**

**Every Thursday in Beverley Chiropractor Centre  
in the Cornerstone Building  
(Entrance off Dawson Street)**

**Sports injuries, osteoarthritis, muscle strains,  
neck pain, back pain, headaches,  
post-op management**

**Enquiries and Bookings:**

**Phone 0437 709 577**

**Book Online at [www.beverleyphysio.com.au](http://www.beverleyphysio.com.au)**



northam optical



- Bulk billing to Medicare
- HBF & DVA Provider
- Competitive prices
- Great range of frames & sunglasses
- Locally owned and operated

**[www.northamoptical.com.au](http://www.northamoptical.com.au)**

**138 Fitzgerald St Northam WA P 9621 1131  
E [northam.optical@yahoo.com.au](mailto:northam.optical@yahoo.com.au)**

## BEVERLEY EASTER TENNIS RESULTS 2021

EVENT	EVENT NAME	WINNER	RUNNER-UP
1	Championship Mens Singles	Tomas Devereux	Ravi Fozdar
2	Championship Ladies Singles	Alice Stevens	Alfee Stevens
3	Championship Mens Doubles	Tomas Devereux Sean Moore	Kenshin Wantanabe Ravi Fozdar
4	Championship Ladies Doubles	Alfee Stevens Alice Stevens	Taryn Luttrell Claire Atley
5	Championship Mixed Doubles	Alfee Stevens Tom Devereux	Tarryn Luttrell Jack Baldwin
6	Handicap Mens Singles	Jonathan Ross	David Irvine
7	Handicap Ladies Singles	Stella Wildberger	Annabelle Broun
8	Handicap Mens Doubles	Aneil Achari Derek Rijnhart	Kenshin Watanabe Yuji Watanabe
9	Handicap Ladies Doubles	Randi Augustin Leah Hardman	Alex Kop Jacinta Murray
10 A Grade	Handicap Mixed Doubles	David Irvine Amanda Irvine	Will Power Amanda Power
10 B Grade	Handicap Mixed Doubles	Jack Mills Joan Irvine	John Daff Anne Kerr
11	Handicap 45 & Over Mens Singles	Bruce Parsons	Darryl Power
12	Handicap 45 & Over Mens Doubles	Rob De Gruchy Trevor Metcalf	Vish Achari Bruce Parsons
13	Handicap 45 & Over Ladies Doubles	Thelma Fulker Steph Stanley	Catherine Gordan Cassandra Worboys
14	Handicap 45 & Over Mixed Doubles	Sven Hallgren Laraine Loveland	Jeremy Fisher Anthea Cooke
15	Handicap 14 & Under Boys Singles	Jack Mills	Reaghan Murray
16	Handicap 14 & Under Boys Doubles	Oliver Aynsley Jud Patton	Max Hill Zac Hill
17	Handicap 14 & Under Girls Singles	Eleanor Kelso	Isla McLean
18	Handicap 14 & Under Girls Doubles	Grace McLean Stella Wildberger	Emma Kilpatrick Bella Mellick
19	Handicap 14 & Under Mixed Doubles	Reaghan Murray Bella Mellick	Hugh Fairclough Emma Kilpatrick
20	Handicap 11 & Under Boys Singles	Owen Hales	Matthew Ashworth
21/23	Handicap 11 & Under Doubles (A)	Burke Murray Owen Hales	
22	Handicap 11 & Under Girls Singles	Harley Kelso	Abbey Hinchcliffe
21/23	Handicap 11 & Under Doubles (B)	Thomas Hinchcliffe Abbey Hinchcliffe	
24	Handicap 11 & Under Mixed Doubles	Combined event 21/23	





# BEVERLEY FOOTBALL CLUB



## ROUND 1 – SATURDAY 10 April

### LEAGUE RESULTS

BEVERLEY            8.6 – 54  
 YORK                12.10 – 82

**Best Players:** A. Boyse, J. Mann, G. Reynolds,  
 B. Fotheringham, S. Murray

**Goal Kickers:** A. Boyse 3, K. Quartermaine 2,  
 J. Ballantyne, K. Ugle, D. Gollan

### RESERVE RESULTS

BEVERLEY            5.3 – 33  
 YORK                10.11 – 71

**Best Players:** A. Shilling, M. Mclean,  
 C. Horrocks, F. Wittwer, S. McLean

**Goal Kickers:** S. McLean 3, L. Ugle 2

## ROUND 2 – SUNDAY 18 April

### LEAGUE RESULTS

BEVERLEY            20.9 – 129  
 FEDERALS            8.10 – 58

**Best Players:** K. Ugle, G. Reynolds, J. Mann, D.  
 Nelson, A. Boyse

**Goal Kickers:** D Nelson 5, A Boyse 5, K. Ugle 3,  
 D Gollan 2, J Ballantyne, J Slater, K  
 Quartermaine, L Gollan, D Mcauley

### RESERVE RESULTS

BEVERLEY            8.7 – 55  
 YORK                15.8 – 98

**Best Players:** T. Bremner, D. Franklin, D.  
 Shilling, L. Henry, S. McLean

**Goal Kickers:** D Franklin 4, L Henry 2, B  
 O’Meagher. S McLean

## NETBALL RESULTS

### ROUND 1

BEVERLEY            20  
 YORK                24

**Best Players:** Gemma Bassett, Jenny  
 Murray and Mel Davenport

### ROUND 2

BEVERLEY            21  
 FEDERALS            41

**Best Players:** Gemma Bassett, Narelle  
 Bailey and Britt Duncan

### Upcoming games:

- 02 May Railways vs Beverley
- 08 May York vs Beverley
- 15 May Beverley vs Quairading
- 23 May Beverley vs Cunderdin

Welcome back to football and netball in Beverley for 2021. After a year off for Covid in 2020 we are all excited to be back on the courts and oval pulling on the red and black.

Our teams have all been hard at it during the pre-season and we are looking forward to what the season has in stall for us.

We look forward to seeing you at our home games – and even some of our away ones

UP EM ALL!

## Easter 2021 - Game Back On!

The Easter 2021 Tournament was held in fantastic conditions with over 130 competitors taking to the courts.



The Match Committee of Mandy, Carissa, Aliesha, Bec and Chantelle are to be commended on such a smooth running tournament. To put on a four day event takes a mountain of volunteers including all our general committee, greens keepers, caterers, members who assisted with busy bees and sponsors. There are too many individuals to list so thank you to everyone who played their part in an excellent weekend.

Thanks to our major sponsors Beverley Transport and R & L Hiab Services and to all our local sponsors for their continued support.

A list of all the winners is provided.

The Black Tie Sundowner to thank and farewell Rob de Gruchy and Dina Barrett-Lennard was the highest attended Sunday night event we've held. This shows the appreciation of Rob and Dina by of all our members and the Perth players that attend Easter. Thank you to everyone who attended the evening, a great time was had by all. Below is a poem written and read by Narelle Bailey at the Sundowner.

### THANK YOU, ROB AND DINA

Beverley Lawn Tennis Club welcomed Rob back in 1994,  
A tennis gun, hard worker and all round good bloke for sure.  
It didn't take long for Rob to fill a committee position or two,  
A hard man to stop is our Rob, there's always much to do!

The serve and volley, the diving chase and lightening cross at the net,  
Is what we've been accustomed to when watching Rob close out a set.  
Not one to give up, Rob's in the match until the last point has been played,  
Plenty of times he's left younger opponents looking somewhat dismayed!  
You see, Rob gets in your head and makes you play that one extra ball.  
Whether it's pennants, championships or social tennis, makes no difference at all.

The club has been Rob's second home since taking on the green keeper role.  
Hours and hours of hard work and sweat, he's given his heart and soul.  
Making sure our courts were always looking their best,  
Even more so at Easter time, when they're put through their biggest test!

Awarded life membership, a token of appreciation from the club.  
We are going to miss your friendly face and accompanying smell of dencorub!  
All of the little jobs you'd take care of never went unseen,  
Committee meetings or important events that you've missed would be few and far between.

Rob, thank you for sharing your knowledge and passion for the game.  
For welcoming new players of different abilities, and treating them the same.

You can't take all of the accolades Rob, you've had a wonderful offside.  
Supporting your efforts, allowing you the time - we know her name is Dina!  
She too has contributed to the club over many, many years.  
A friendly face to share a chat with, a tireless volunteer.

To the both of you, we wish you well as you embark on a new beginning.  
We hope Rob that somewhere on a court you are still having a crack at winning!

### AGM

The closing day and AGM was held on Sunday 29 March 2021. All positions were filled, with the exception of President. If you are a financial member and are interested in the position please speak to a Committee Member.

### Communication

The tennis season has now finished. We look forward to seeing you all again in October 2021. Beverley Tennis Club is on both Facebook and Instagram - please like and follow for instant information.



Dina Barrett-Lennard & Rob de Gruchy



Outgoing President Chad & Vice President Graeme



Monday awards presentation



# And the winners are...



Championship Ladies Winner Alice Stevens with sister and Runner Up Alfie Stevens



Championship Singles Winners Alice & Tomas



Championship Mixed Doubles winners and runners up



Over 45s Men's Doubles Winners and Runners Up



Juniors Presentation



Carissa, Ash, Jacinta and Narelle





# Beverley Horse and Pony Club



## Who's been out and about ...

**Serpentine ODE:** Jessamine, riding Playboy, attended Serpentine HPC ODE on the 27 & 28 March and completed all phases of the 65cm class. Onwards and upwards!

**State Tetrathlon Championships:** On the 10 & 11 April at Mortlock PC in Goomalling, our club had three riders enter the WA State Tetrathlon Championships! Carly placed 5th individually in the 85cm & her team came 3rd in the championship classes. Unfortunately, Emily's horse (Paddy) became lame just before the event. We all have our fingers crossed that he recovers soon. Jessica, riding Eddie, came 2nd place for the non-competitive 13-17yrs. Fantastic effort and results from a small country club!



Department of  
Local Government, Sport  
and Cultural Industries



**April Rally:** Saturday the 17th saw a full rally with four groups of riders rotating through flatwork, showjumping, novelties and horse master ship. It was great to see each group challenged to achieve their best and constantly refining their skills.

**Congratulations** to Carly & Mac Ballantyne and Jessica & Emily Maxwell for being accepted on the State Tetrathlon Development Quad!



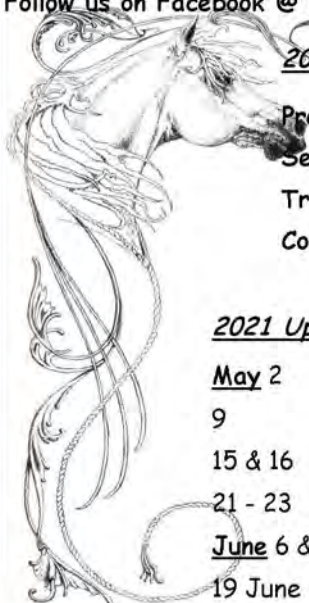
Follow us on Facebook @ Beverley (West Aust) Horse And Pony Club Events

## 2021 Committee contacts:

President: Lisa Maxwell	E l.a.maxwell6@gmail.com	M 0408 902 701
Secretary: Tess Hawke	E keely@westnet.com.au	M 0419 879 310
Treasurer: Di Ballantyne	E ballantyne@bordernet.com.au	M 0427 777 764
Coach Co: Jessamin Pain	E bevpc.coaching@gmail.com	M 0447 722 958

## 2021 Upcoming dates and events ...

<u>May</u> 2	<b>Dressage and Show jumping Day</b>	South Midlands, Muchea
9	<b>BHPC 4<sup>th</sup> Rally</b>	Beverley HPC
15 & 16	<b>Avon Zone ODE</b>	Avon Valley SJPC, Northam
21 - 23	<b>State Show Jumping Championship</b>	State Equestrian Centre, Brigadoon, WA
<u>June</u> 6 & 7	<b>Pony Club Festival</b>	TBC
19 June	<b>BHPC Gymkhana</b>	Beverley HPC
12 & 13 June	<b>MGA (Mounted Games Association)</b>	Beverley HPC
20 June	<b>BHPC 5<sup>th</sup> Rally</b>	Beverley HPC
26 June	<b>Active Riding Training Day</b>	Beverley HPC
27 June	<b>Avon Zone Active Riding Runoffs</b>	Beverley HPC





## EVENTS 2021

EVENT	DATE
WHAT A PILE OF COMPOST WORKSHOP	10 MAY
I SPLIT MY PLANTS WORKSHOP	11 MAY
MM..WHAT TO DO WITYH YOUR POO WORKSHOP	12 MAY
SQUIRM WITH THE WORMS WORKSHOP	13 MAY
YOU SWAPPED WHAT? SOCIAL PLANT SWAP	14 MAY
DAWN COLLINS - LIVE	20 MAY

The flag was flown at half-mast on the Beverley Town Hall as a mark of respect to:-

- BARDON, JOSEPH DEAN
- UGLE, RICKY DAVID
- CULLEN, JUDY LANGTON
- NICHOLSON, PERCY ALBERT
- HIS ROYAL HIGHNESS THE PRINCE PHILIP, DUKE OF EDINBURGH

### **Emergency Medical Information Book**

This useful book contains all a person's information and medicals record needed if, or when, an ambulance is called, and they need to be transported to a hospital. The Emergency Medical Information Book Available for a \$2 donation at Beverley Farm Services.

Support your local groups



WESTLANDS & BUSY  
BUSH BEES

## **LOCAL HONEY**

Available at the Beverley Visitor Centre



*Do you want to advertise in the*  
*Beverley Blarney*  
**ADVERTISING RATES**

#### **Monthly Advertising**

Size G - Full Page	\$182	
Size A - 122 x 180mm	\$ 96	
Size F - 122 x 135mm	\$ 72	
Size B - 122 x 89mm	\$ 47	
Size C - 60 x 89mm	\$ 29	
Size D - 5 lines*	\$ 8	*MUST BE PAID IN ADVANCE
Size E - 3 lines*	\$ 5	*MUST BE PAID IN ADVANCE
Trading Post*	\$ 3	*MUST BE PAID IN ADVANCE
		- 120 characters max.

#### **Annual Advertising**

Size G - Full Page	\$1,820
Size A - 122 x 180mm	\$ 960
Size F - 122 x 135mm	\$ 710
Size B - 122 x 89mm	\$ 470
Size C - 60 x 89mm	\$ 290

# **BEVERLEY BLARNEY**

**900 copies each month**

Community notices are free of charge

**The deadline for the next  
Beverley Blarney is 4pm  
Saturday 22 May 2021**

Contact our friendly Shire staff today

Shire of Beverley

PO Box 20 Beverley WA 6304

**Phone:** 9646 1200

#### **DISCLAIMER**

*The information in this publication is of a general nature as a service to the ratepayer. The articles included herein are not intended to provide a complete discussion of each subject. While the information is believed to be correct, no responsibility is accepted for its accuracy. No liability is accepted for any statements of opinion or any error or omission.*



MONDAY	TUESDAY	WEDNESDAY	THURSDAY	FRIDAY	SATURDAY	SUNDAY
					<b>1</b> Community Markets  Junior Sports  St Mary's Night Church  Golf	<b>2</b> BORMSA Autocross
<b>3</b> RSL Meeting  Weight Watchers  Dance	<b>4</b> Stay Active  Men's Shed  Quilting  Garden & Tree Club Meeting  Golf	<b>5</b> Junior Sports Training  CWA Social Morning  Badminton  Croquet 9am  RAOB	<b>6</b> Playgroup  Line Dancing	<b>7</b> Op Shop  Secret Bridesmaids Business Show  Croquet 4pm	<b>8</b> Junior Sports  CWA Morning Tea  Secret Bridesmaids Business Show  Golf	<b>9</b> Secret Bridesmaids Business Show  BHPC Rally
<b>10</b> Weight Watchers  Dance  Gardening Workshop	<b>11</b> Stay Active  Men's Shed  Quilting  Gardening Workshop  Golf	<b>12</b> Junior Sports Training  Gardening Workshop  Badminton  Croquet 9am	<b>13</b> Playgroup  Gardening Workshop  Line Dancing	<b>14</b> Op Shop  Recycle Bin  Gardening Workshop  Croquet 4pm  Golf Coaching	<b>15</b> Junior Sports  Golf  Footy in Beverley	<b>16</b> Clay Target Club Shoot Day
<b>17</b> Weight Watchers  Dance	<b>18</b> Stay Active  Men's Shed  Quilting  Golf	<b>19</b> Junior Sports Training  CWA Meeting  Badminton  Croquet 9am	<b>20</b> Playgroup  Line Dancing  <b>DAWN COLLINS LIVE</b>	<b>21</b> Op Shop  Croquet 4pm	<b>22</b> Junior Sports  Golf  <b>BLARNEY DEADLINE</b>	<b>23</b> Motocross  Footy in Beverley
<b>24</b> Weight Watchers  Dance	<b>25</b> Stay Active  Men's Shed  Quilting  COUNCIL MEETING  Golf	<b>26</b> Junior Sports Training  Badminton  Croquet 9am	<b>27</b> Playgroup  Line Dancing	<b>28</b> Op Shop  Recycle Bin  Friday Bingo  Croquet 4pm	<b>29</b> Junior Sports  Golf	<b>30</b>
<b>31</b> Weight Watchers  Dance  PINTEREST Workshop						