

Beverley Christmas Party at the Station

Saturday 18 December 2021

Carols by Candlelight - Programs and Candles - gold coin donation



ZAP
CIRCUS
www.zapcircus.com

- 5.00pm Gates Open Free Entry**
- 5.30pm Circus FUNdamentals workshop**
- 6.15pm Santa at the Station**
- 7.30pm ZAP CIRCUS - Purple People Comedy Show**
- 8.15pm Carols by Candlelight**

BYO Picnic and Drinks NO BAR





SHIRE OF BEVERLEY PRESIDENT'S REPORT



Extraordinary Election

An extraordinary election has been called for Friday 21 January 2022 to fill one vacancy on Council. Nominations open Wednesday 8th December and close 4pm sharp Wednesday 15th December. If you are thinking about nominating for Council and would like more information about the role, please do not hesitate to contact me, another Councillor or the Chief Executive Officer. Information packs are also available from the Shire Office.

Remembrance Day

The Deputy Shire President, Cr Chris Lawlor, and I attended the Remembrance Day Service at the Cenotaph on Thursday 11th November 2021. I laid a wreath on behalf of the Beverley Community to commemorate this special day which must never be allowed to be forgotten. Thank you to the Beverley RSL for organising and conducting the service.

Central Country Zone Meeting.

With Cr. Chris Lawlor and the Chief Executive Officer, we attended the meeting in Wandering on Friday 19th November. These meetings are an important venue for all Local Government Authorities to collectively put their views through WALGA to relevant Ministers and Government Departments. Of particular concern is the new legislation on Occupational, Health, and Safety which places increasing responsibility on organisations for not only the welfare of employees but more importantly, volunteers.

Community Grants

A reminder that the second round of Community Grants is coming up. Grants will open on Tuesday 4th January 2022 and close 4pm, Tuesday 31st January 2022. Community Groups need to be incorporated. Small Individual grants for state and national representation in your field are also available.

Town Waste Collection – 24 December 2021 and 31 December 2021

The waste collections due for Beverley on Friday the 24th of December 2021 and New Year's Eve, 31st December 2021 will be serviced as normal. Please have your bins out early.

Fire Control

We are now in the Prohibited Burning Period – no fires are allowed. Firebreaks are to be maintained until 15th April.

To join the Harvest/Fire Ban SMS service, please contact Shire admin staff 9646 1200 to register.

If there is a fire emergency of any kind, please call 000.

Roadworks

Throughout December, road works are planned for upgrading Council Road and the Industrial Area and repairs on Top Beverley Road.

Council continues to renew its plant assets and have recently awarded a tender for a new multi tyre roller and a new tip truck.

Reconciliation Action Plan

Council is seeking expressions of interest from any of our Indigenous Community members living in Beverley who are interested in joining a small working group to develop the Shire's Reconciliation Action Plan. Please call or visit the Admin Office for more details. If you wish to discuss this further, please feel free to contact me.

Merry Christmas and Happy New Year

It has been another successful year at the Shire with completion of many projects including the Caravan Park Cabins, upgrades to the Town Hall and Platform Theatre at Station Arts. Various road works have been completed throughout the Shire. The Vincent Street Streetscape Project has commenced and will continue through the first quarter of 2022. We thank you for your patience with the continuing work on the power, roads and footpaths. It will be worth it!

Please be aware the Shire Office will close at 4pm Thursday 23 December and not reopen until Tuesday 4 January, be sure to check you have all your licensing requirements sorted or paid by the 23rd.

On behalf of Councillors and Shire Staff I would like to wish everyone a very Merry Christmas and a Happy New Year. Please travel safely on your journeys and enjoy a restful holiday period.

Cr David White
Shire President

SHIRE OF BEVERLEY
LOCAL GOVERNMENT EXTRAORDINARY ELECTION NOTICE
CALL FOR NOMINATIONS

An Extraordinary Election will be held on Friday 21 January 2022 to fill the following vacancy on the Council of the Shire of Beverley:

Shire of Beverley
District One vacancy Two year term

The election will be conducted as a voting in person election. Nominations for this vacancy open on Wednesday 8 December 2021 and close at 4:00pm Wednesday 15 December 2021.

Role of Councillor

To be a Councillor, you would be involved in running an organisation with the responsibility of making decisions that have a major impact on our lifestyle. As a representative of your community you will find the role enjoyable, challenging and stimulating with involvement in matters as diverse as recreation, strategic planning, the environment, financial planning, town planning, youth, roads and many more.

Who is eligible?

Any person who is an Australian Citizen over the age of 18 years who is an elector of the district and is not disqualified under the Local Government Act 1995 may nominate for council.

Prior to nominating, a candidate must complete Local Government Candidate Induction online through the Department of Local Government, Sport and Communities website. You require an email address to complete the induction.

<https://www.dlgsc.wa.gov.au/local-government/local-governments/council-elections/induction-for-prospective-candidates>

When and where to nominate

Nominations open on Wednesday 8 December 2021 and close at 4.00pm sharp on Wednesday 15 December 2021.

At the Shire of Beverley Office, 136 Vincent Street, Beverley.

The Office is open from 8:30am – 4:00pm

Nominations must be to the Returning Officer (CEO) on a prescribed form that is available from the Shire Office. Your induction training reference number must be on the form.

An \$80 nomination deposit is required as well as a profile of the candidate consisting of no more than 800 words. You can include a recent passport sized photo of the candidate's head or head and shoulders if you wish.

A nomination pack that details the full nomination process and appropriate forms is available from the Shire Office.

Stephen P Gollan

Chief Executive Officer
Returning Officer



2021

Shire of Beverley Council Meetings

Meetings commence at 3pm

Tuesday 14 December 2021



2022

Shire of Beverley Council Meetings

Meetings commence at 3pm

Tuesday 22 February 2022

Tuesday 22 March 2022

Tuesday 26 April 2022

Tuesday 24 May 2022

Tuesday 28 June 2022

Tuesday 26 July 2022

Tuesday 23 August 2022

Tuesday 27 September 2022

Tuesday 25 October 2022

Tuesday 22 November 2022

Tuesday 13 December 2022



Don't Forget



The Pool opens November 1st

Open:

12pm - 7pm

Every day

except Tuesday

Early Morning Laps:

6 - 7am

Every week day



Beverley Landfill Site Opening Hours

Saturday

8.00am – 4.00pm

Sunday

8.00am – 4.00pm

Monday**

8.00am – 3.30pm

****Please Note:**

EARLIER CLOSING TIME

CLOSED

Christmas Day, Boxing Day, New Years Day & Total Harvest Ban Days



XMAS CLOSURE NOTICE

December

Thursday 23rd - Admin Centre OPEN

Friday 24th - Admin Centre CLOSED

Monday 27th - PUBLIC HOLIDAY

Tuesday 28th - PUBLIC HOLIDAY

Wednesday 29th - Admin Centre CLOSED

Thursday 30th - Admin Centre CLOSED

Friday 31st - Admin Centre CLOSED

January

Monday 3rd - PUBLIC HOLIDAY

Tuesday 4th - Admin Centre OPEN

AT THE *pool*



2021/2022

Beverley Swimming Pool

The Pool is open from 01 November to 31 March each year.
The Pool is closed Christmas Day (December 25) and Boxing Day (December 26)

Opening Hours

Monday	12 noon to 7.00pm
Tuesday	CLOSED
Wednesday	12 noon to 7.00pm
Thursday	12 noon to 7.00pm
Friday	12 noon to 7.00pm
Saturday	12 noon to 7.00pm
Sunday	12 noon to 7.00pm

Early Morning Lap Swimming

Monday	6.00am to 7.00am
Tuesday	6.00am to 7.00am
Wednesday	6.00am to 7.00am
Thursday	6.00am to 7.00am
Friday	6.00am to 7.00am



General Admission

Under 5	No Charge
Child (5 - 17)	\$1.00
Adult (18+)	\$5.00
Spectators	\$1.00

Season Pass

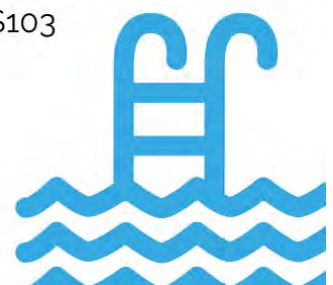
Single:

Adult	\$172
Child	\$34

Family:

Two Adults + 1 Child	\$303
Two Adults + 2 Children	\$330
Two Adults + 3 Children	\$359
Two Adults + 4 Children	\$386

Pensioner/Senior (Full Pension)	\$103
------------------------------------	-------





Merry Christmas

*To all our valued clients
 Thank you for your continuous support of Brookton
 Plumbing throughout the year.
 We look forward to seeing you again in 2022.
 We would like to wish you and your family a very safe
 and prosperous New Year.*

04 December 2021

**Raising Money in 2021 for:
Beverley Junior Sports**

Beverley Community Markets

Stalls, Sausage Sizzle, Raffles



Held on the first Saturday of each month
between March and December

Starts at 8am

At the Old School/CRC Building (next to
Post Office)



BEVERLEY CWA



WE WILL BE HOLDING A CHRISTMAS RAFFLE ON THE
10TH AND 11TH OF DECEMBER 2021
AT THE LIONS KISOK.

WE WILL ALSO BE HOLDING A CAKE STALL ON THE
11TH
WITH MANY HOME BAKED GOODIES ON OFFER.
WITH VARIOUS OTHER GOODS TO BE BOUGHT.

WITH MANY PRIZES TO BE WON
FOOD HAMPER, DRINKS AND NIBBLES HAMPER,
DECORATION HAMPER BUT TO NAME A FEW.

TICKETS ARE 1 FOR \$2.00 OR 3 FOR \$5.00

SO COME AND HAVE A LOOK!!





BEVERLEY FARM SERVICES

Geoff & Jenny wish all their clients a Safe & Happy Christmas.

May the New Year be the best for you and yours.

Thanks for your Patronage in 2021.

We look forward to being of Service to you in 2022.

May the Harvest be plentiful with lots of grain in the bin.

If you are travelling over the Festive Season, drive carefully &

Stay safe.

We want to see you back in 22.

For Lease Office Three @ Cornerstone

**Please contact the Shire Office for
leasing and viewing information.
9646 1200 or
admin@beverley.wa.gov.au**

**Excellent location
and modern facilities**

Available from 29 November 2021

18722 DOODENANNING-MAWSON ROAD
 Quairading WA 6383
 • 77ha (192 acres)

LOT 32 RUMBLE ROAD, KOKEBY
 Beverley WA 6304
 • 131 acres (53 Ha)

"INGLESIDE" DALE - KOKEBY ROAD
 Beverley WA 6304
 • 94.6 ha (233.7 ac)

LOT 150 MAWSON ROAD
 Beverley WA 6304
 • 156 acres (63.2 Ha)

453 BARTRAM ROAD
 Jelcobine WA 6306
 • 150 acre (60.8 ha)

81 VALLENTINE ROAD, DALE
 Beverley WA 6304
 • 140 acre (56.7 ha)

What are you waiting for?

List this Summer with a team you can trust to deliver you the best results.



IAN (FRED) HILL

0417 991 573
 Fred.Hill@elders.com.au





PLAYGROUP SESSION DETAILS



When: Thursday morning's
(closed on school & public holidays)

Time: 9.30am to 11.30am

Where: at the Playgroup Building at the Beverley School (Lennard St)

Available for all children aged 0-4 years old

Bring a piece of fruit to share, hat and sunscreen

Weekly gold coin donation for Term 4

Annual Fees

Family - \$35 for Insurance

Concession card holders - \$15 for Insurance

Find us on Facebook:
[Facebook.com/BeverleyPlaygroupWA](https://www.facebook.com/BeverleyPlaygroupWA)

For more information contact President



BEVERLEY TYRE SERVICE
SPECIALISING IN
AGRICULTURAL & HAULAGE TYRES, REPAIRS & BATTERIES
Call H & Alex Today!
0407 457 427
48 DAWSON ST, BEVERLEY

Christmas wishes from
AVON TRADING

Christmas & New Year Trading Hours

Friday 24th Dec	Open
Saturday 25th Dec	Closed Christmas Day
Sunday 26th Dec	Closed
Monday 27th Dec	Closed (Xmas Holiday)
Tuesday 28th Dec	Closed (Boxing Day Holiday)
Wednesday 29th Dec	Open
Thursday 30th Dec	Open
Friday 31st Dec	Open

New Year

Saturday 1st Jan	Closed New Years Day
Sunday 2nd Jan	Closed
Monday 3rd Jan	Closed (New Year Holiday)

HOME Hardware
Marcus, Kelly, Peter & Vicki and the Staff at Avon Trading would like to thank our customers for their valued support in 2021.

Family Fun
We are a family friendly club that is all about community spirit and having a good time. For more details contact Steve on: 0492865335.

We Are Looking
WA Superlites are looking for property owners interested in hosting a race weekend for the club each year. Financial opportunities, support local clubs, promote your local area, and all round good fun.

Testimonial
Rosevale Homestead
Narelle and Wog from Rosevale Homestead would like to thank WA Superlites for a fantastic weekend and allowing passengers to participate (especially Wog!) and we look forward to seeing you all again soon.

GROUP FITNESS CLASSES

WHEN

Wednesdays
5.15pm & 6.30pm
Fridays
6.00am

WHERE

Beverley
Exhibition Shed

COST

FIRST CLASS FREE
\$15 per class after that

All members of Beverley and surrounding communities are welcome (not just farmers), and all levels of fitness and experience are encouraged to attend!

For more information contact your Active Farmers trainers Ashlyn or Robbie for more information:

Ashlyn Ridgway
0427 461 506
ashlynj@live.com.au

Robbie Wansbrough
0428 843 251
robbie@reapwhatyousow.com.au

<https://www.activefarmers.com.au/beverley-wa>



We know your soil because we **dig deeper** into the data

Soil test with inSITE, our industry leading soil analysis program

- Independent laboratory.
- Rapid turnaround times.
- Wide range of analytes measured.
- Product recommendations based on results.
- Support from your experienced Area Manager.
- View results on SummitConnect.
- Customer owned data.



Speak with Brett
to learn more

Mobile: 0427 766 506 Email: bcoxon@summitfertz.com.au



Beverley Rose Show Raffle Prizes (Plant Stall Section) | Drawn 23/10/2021

Prize		Winner	Donor
1st Prize	Rose Pot Pack	Beryl Gors	Bunnings Northam
2nd Prize	\$50 Voucher	Dalene Davis	York Co-Op
3rd Prize	Sunbeam Food Heater	Betty Wauchope	Betta Electrical Northam
4th Prize	Rooster Platter	Chere McLoy	Beverly Post & News
5th Prize	Italian Hamper	Kathy Kont	Diane Colebrook
6th Prize	Gardeners Gift Care	Bevan Carter	Beverley Pharmacy
7th Prize	Grocery Hamper	John Alexander	Gaenor Carter
8th Prize	Toiletry Hamper	Heather Kendrick	
9th Prize	Hand Care Pack	Linda Boliver	
10th Prize	Toiletry Hamper	Dalene Davis	Rita McCallum
11th Prize	Gold Treasures Box	Marg Peck	Thingz Northam
12th Prize	Set of 3 Christmas Bowls	Denise Strange	
13th Prize	Christmas Bowl and Plate	Denise Hales	
14th Prize	Serviettes and Paper Pack	Lee Storer	
15th Prize	Serviettes and Paper Pack	Val Lamb	
16th Prize	Serviettes and Paper Pack	Dawn Walker	

“Guess the Number of Lollies” in the jar

Winner was Lee Storer who guessed 140 Lollies—there were 142 Lollies in the jar.

Thank you to the generous donors of the raffle prizes. Thank you to everyone who attended the Rose Show and supported the plant/ raffle section. Also to Gaenor Carter for wrapping and presenting the prizes so attractively.





Beverley Historical Society
Dead Finish Museum

bhsdeadfinish@gmail.com

BEVERLEY HISTORICAL SOCIETY.

Welcome – by the time the Blarney is out it will be 24 days to Christmas.

After a very busy year we are slowly winding down and looking forward to a well-earned rest. Once again thank you to all our volunteers that keep the Museum open on Sundays

plus on request extra days during the weeks, for all the research that we are asked for and the big task of sorting through the filing cabinets.

The final day the Museum is open is 28th November 2021 and will reopen on 6th March 2022.

In 2022 the Dead Finish Building will be 150years and together with the community will be celebrating this occasion in September 2022 – stay tuned for what is planned in next years Blarney.

We are seeking any photos (group) of Beverley Football Club 1966,67,68 that may have Kevin Eyre in plus any info on Colstoun House in John Street please.

Elsewhere in this Blarney is the **President's Report** of the past year's activities and a Can You Help page with some school photos from the 1930s & 1950s.

Wishing you all a Merry Christmas and a Prosperous New Year.

Next Meeting is Monday 6th December at 9a.m. followed by cover up of the Museum.

EMS

Evert's Mechanical Services

For Affordable, Friendly, Honest Service

AVAILABLE OVER THE HOLIDAY SEASON

We come to you, Mobile Mechanic

- ✓ We are your local Mobile Mechanic.
- ✓ Fully trained and Qualified to service your car
- ✓ Service your Brakes/Change Brake fluid
- ✓ Oil and Filter Change
- ✓ General Safety Check
- ✓ Car, 4WD, SUV's Old and New
- ✓ Change/flush Engine

- Change/Flush Engine Coolant
- Tune Ups/Spark Plug Replacement
- Battery Replacement
- Dash/Engine Lights Diagnosed
- DPF Regens. Other Repairs/Breakdowns.
- Phone us on: 0404-153-264**

Email: EvertsMechanical@protonmail.com



Valenti Lawyers Are Now In Northam

valentilawyers.com.au



Valenti Lawyers is a boutique law firm which prides itself on providing a personalised quality legal service. We specialise in eight core services for leading businesses and individuals, each led by one of our experienced senior lawyers; Business Growth & Protection, Dispute Resolution & Commercial Litigation, Finance & Security Services, Insolvency, Land Reservation, Resumption & Compensation, Property & Town Planning, Rural Assets & Succession Planning, and Wills, Probate & Inheritance. You can now find us at the below address in Northam every fortnight!

Open fortnightly from the 12th February 2021.

Please head to valentilawyers.com.au to view our Northam office dates, and to book an appointment with one of our staff.

**RSM
210a Fitzgerald St East.
Northam WA 6401**

6th November 2021

The Honourable Barnaby Joyce MP
Deputy Prime Minister
Minister for Infrastructure, Transport and Regional Development
PO Box 6022
Parliament House
Canberra ACT 2600

Dear Barnaby,

I refer to my previous letter to you dated 25th June 2021. On that date I wrote to you on behalf of seven families who have all lost family members at passive level crossings in regional WA and NSW. As previously stated, we continue to call for the Federal Government to immediately introduce legislation through the *Rail Safety National Law* to force rail companies to improve safety lighting on trains. We are also asking you to direct an immediate rollout of increased safety lighting technology at all passive level crossings Australia wide.

Five of the seven families in our group featured on the national *ABC Landline* program on Sunday 24th October and stated on the record that rail companies must be forced to put rotating beacons or strobe lights high up on locomotives in line with recommendations from coroners and parliamentary inquiries dating back several decades.

In addition, we are calling for LED lights to be installed on the sides of wagons, so the entire length of trains are illuminated in line with Australian road transport industry requirements. We are also calling for improved safety measures (including cost-effective solar powered flashing lights) at passive level crossings.

Since the *ABC Landline* program aired on October 24th, a further four families who have lost loved ones at passive level crossings and as a result of poor train lighting have come forward to join our national campaign. I wish to formally notify you of their inclusion in this group of families and I will outline their details further on in this letter.

You will also be aware of the *Level Crossing Safety Debate* due to take place in the NSW Parliament this Thursday November 11th. This debate is the result of a petition started by one of our group members, Maddie Bott, with the backing of Nationals Member for Cootamundra, Steph Cooke MP following the tragic level crossing accident at Bribbaree in February this year. Maddie's fiancé Ethan Hunter and his work colleague Mark Fenton were killed instantly when their B-double road train collided with a freight train at a level crossing 70km north-west of Young, NSW.

This petition called for the NSW Assembly to make warning lights mandatory at all level crossings, decrease speed limits on highways for vehicles approaching level crossings, and make trains more visible. Although this petition was for residents of NSW, all our families located across Australia will be watching the debate with great interest.

We also understand you have recently requested the Office of the Rail Safety National Regulator (ORSNR) to undertake a review into train visibility in Australia and that this will be carried out by the Australasian Railway Association (ARA) with a completion date expected before the year is out.

We were pleased to hear you had met with the CEOs of major rail freight businesses and asked them to take a serious look at steps to improve rail safety, including the greater adoption of lights and reflective materials on trains.

However, I speak on behalf of all the families when I state that we find it concerning that you also said that you, “expect the rail industry to lead on increasing the safety of their industry” because history has proven that the rail industry will do as little as possible on a voluntary basis.

I refer to the fact that the current Rail Industry Safety and Standards Board (RISSB) Australian Standard 7531 governing Lighting and Visibility on trains sets out only minimum requirements not dissimilar to the requirements for train lighting that applied in the 1800’s and the onus is on the rail industry to eliminate a safety risk as “reasonably practicable.”

These flimsy standards are vague at best and illustrate exactly why no progress has been made to improve train lighting in decades. Unless the Federal Government makes rotating beacons on locomotives and side lighting on wagons mandatory through the *Rail Safety National Law*, rail companies will continue to dodge their safety responsibilities, bureaucrats will continue to shuffle paper across desks and more people will continue to die at passive crossings for decades and centuries to come.

Our families have legitimate reasoning for our cynicism when it comes to the complete lack of action taken by rail companies historically. We all had to look on in complete despair when the recommendations of three State Coroners (WA, NSW and Victoria) following fatalities over several decades were completely ignored as well as the recommendations from numerous inquiries and committees into passive level crossing accidents.

Our families know that fitting auxillary lighting to locomotives (hazard, side and front lighting) is a trivial expense for rail companies. We also ask that you consider the enormous economic cost of rail deaths and trauma, the incredible toll on emergency services and first responders, injuries requiring hospitalisation - not to mention the immeasurable human cost of these tragedies – the lives cut short, or severely diminished.

Time is of the essence to act on the matter of level crossing safety, particularly as the construction for the 1700-kilometre Inland Rail Project that connects Melbourne to Brisbane via regional Victoria, NSW and Queensland is well underway. Make no mistake, this must be handled as a federal issue and our families will not stop lobbying until legislation has been introduced enforcing enhanced train lighting and passive level crossing lighting across the country.

The accident that killed my brother and his friends in 2000 was a catalyst for the implementation of the Rail Safety National Law by the Council of Australian Governments (COAG) in 2009 to administer a nationally consistent law which prior to that date was delivered by State and Territory regulators. The Office of the National Safety Regulator (ONRSR) became operational on 20 January 2013, administering a single national set of rail safety laws for Australia.

Unfortunately, since then the ONRSR has achieved absolutely nothing. We need to see this national law be brave and bold enough to honour the memory of our loved ones and all the

others who have lost their lives due to poor train lighting and inadequate safety measures at passive level crossings.

Below please find a recap of the amendments our families are requesting be made to *the Rail Safety National Law* to improve train lighting and to increase safety measures at all level crossings.

- 1) The installation of flashing amber lights across the front of train roofs to increase visibility, and LED lights on the side of carriages so the entire length of the train is illuminated.
- 2) Providing ultra-high frequency radio communication on channel 40 to trains so drivers may alert truck drivers of arrival or other potential dangers.
- 3) Implementing low-cost solar-powered, flashing lights to automatically flash when a train is within 1km of a passive crossing.

So, in closing, on behalf of the Bott, Hunter and Fenton families in addition to our eight families (Jensen, Broad, Smith and Dempster, Norman, Wooden, Morley-Betts and Boak) who lost our loved ones more than two decades ago, I am respectfully calling for the following amendments to improve safety at railway crossings and advocacy for the for their codification in the *Rail Safety National Law*.

I would also like to formally acknowledge the additional members who have joined us by providing their names and a chronological summary of the accidents that claimed their loved ones below.

Mr Greg Levett and Mrs Nicole Stephens (children of Mr Terry Levett)

Mrs Patty Norman (sister of Mr Terry Levett):

On the 11th April, 2000, 49 year old father of two Terry Levett was killed at the Burrangong passive level crossing near Young. A well-respected local farmer in the area, Terry was on his tractor returning to Maimuru just a short distance from Young. No speed, alcohol or drugs were involved in the accident.

Ms Aimee Wooden (sister) and Mr Barry Wooden (father) of Kyle Wooden):

On January 27th 2001, Kyle Wooden, 18, Cameron Tucker, Graham Kelly, Luke Milne and Ben Wilkins, all 19, of Wagga Wagga were killed instantly when their car was hit by the XPT Sydney to Melbourne express train. New South Wales Deputy State Coroner Carl Milovanovich categorically rejected any suggestion that the boys were racing the train and found that speed was not a factor in the collision.

Ms Alice Morley Betts (daughter of Mr Harvey Betts):

On the 19th April 2020, 62 year old Harvey Betts was killed instantly at a notorious passive level crossing just off the Dukes Highway at Culburra, near Coonalpyn, when the truck he was driving and a freight train collided.

Ms Jess Boak (sister of Jaimes Boak):

In July 2005, popular rural community member Jaimes Boak was a pedestrian when he was struck by the rear carriages of a freight train in the small town of Kaniva, Victoria. He was attempting to cross the rail line at night via an unmarked walking track frequently used by locals. Town lights were visible across the flatbed carriages that were not carrying freight containers. Had side lighting been in place, his family would not be grieving his loss today.

We want this review to have comprehensive, effective, and permanent safety outcomes so other families may be spared the pain we are all living with.

We have all waited long enough.

As a result of such a review, our families expect that a comprehensive plan for practical train lighting improvements and passive rail crossing lighting innovations will be initiated immediately in all states and territories of Australia, and that it will not prove to be yet another waste of time.

It is completely reprehensible that in 2021, rail companies consistently refer anyone who questions their inadequate safety systems to various industry-funded foundations such as Track SAFE.

Track SAFE predictably and consistently put the onus on driver behaviour, effectively absolving rail companies from having to take any responsibility for their own duty of care or corporate safety responsibilities. Disappointingly this is exactly the mantra that has been repeated in all my recent correspondence with rail company managing directors and CEOs.

No other industry in the 21st century is allowed to get away with such an unconscionable lack of action. Indeed, neither should the multi-billion-dollar rail industry.

I will listen with interest to the findings of the upcoming train visibility review and our families would sincerely like to be kept informed and have the right of reply if the recommendations fall short of our expectations.

Please do not hesitate to contact me if you have any queries or require further clarification on anything I have covered in this letter.

I look forward to hearing from you,

Yours sincerely,

Lara Jensen

Wondinong Station

Mount Magnet

WA 6638

Email: wondinongpastoral@gmail.com

Mob: 0429 386 182



Star Hearing Consultants

Hear Better To Live Better | INDEPENDENT AUDIOLOGISTS

Expert Hearing Care Services in **Beverley & Brookton**

Do you have
Hearing difficulty / Tinnitus (Ringing in the ears) ?



Check our Google reviews
to see what our patients say about our services!

1 Hour Free Assessment

For Limited Time only

Treating Hearing loss improves...

- ➔ Memory / Reduces the Risk of Dementia
- ➔ Safety and Balance
- ➔ Brain Function / Cognitive ability
- ➔ Long and Healthy aging
- ➔ Mental and Emotional Well being

Are you a Pensioner / Veteran?

No out of pocket cost to you...

You are eligible to have these tiny hearing aids under the Government Funded Hearing Service Program (HSP)



These days...

Hearing loss is more visible than hearing aids

Free

Test

Free

Hearing aid Fitting

Free

Trial

Regular Clinics in both Medical Centers

Beverley & Brookton	Beverley & Brookton
Viines Medical Practice	Beverly Medical Practice & Saddleback Medical Center

To book a Free Hearing Assessment

Call : 1800 11 4327

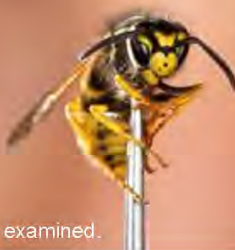
Or ask at the Reception / your Doctor

1800 11 HEAR / 1800 11 4327

www.starhearing.com.au



'Tis the season to be active



Pinned specimen of a European wasp being examined.

It has started! European wasps are here, they are active, and now is the time to find them!

Out of winter hibernation, European wasp (*Vespula germanica*) queens have now built their nests and their workers are foraging for food. The queen now sits safely in her nest with the sole focus of turning her few dozen workers into thousands. With a growing army of wasps, they have hungry larvae to feed, and one of the most distinctive behaviours about this wasp, is that they have no qualms in taking food from us!

These persistent, protein pilferers have been reported stealing steak from a plate, carving pieces from the cat food and spoiling a nice BBQ. Their desire for desserts has seen them take a liking to lollipops, carting foam from a cappuccino and taking the icing from the cake.

European wasps aren't just a social nuisance and safety concern, they have a devastating impact on the local environment and their foraging activities damage home garden and commercial fruit crops. Did we mention they also attack and kill beehives?

The European wasp surveillance and eradication program in WA has to date prevented the permanent establishment of this wasp species, but

every year wasps enter WA from interstate and every year we must detect, locate and eradicate every nest. State-wide public reporting of suspect wasps is integral to the success of the program.

Know what to look for:

- black and yellow body with **black antenna**
- **scavenge** on human and pet food, fruit, drinks, insects and carrion
- **nest underground** - nests grow to the size of a basketball in a single season and have a small (golf ball sized) entrance hole
- do **NOT** dangle their legs when flying

Surveillance made simple:

- have an outdoor picnic, or BBQ
- enjoy an alfresco drink
- take a nice hike
- pick some fruit
- feed your pet
- scoop your pool
- ... and look for wasps.

The surveillance season runs December to May. For more information about the eradication program, how to identify wasps or how you can help further, see agric.wa.gov.au/wasps or contact our Pest and Disease Information Service.

Report suspect pests



MyPestGuide™ Reporter
via app or online
mypestguide.agric.wa.gov.au



Pest and Disease Information Service
(08) 9368 3080
padis@dpird.wa.gov.au

Beverley CWA



To end off the month of October Kings Park Fashions came to our Beverley Country Women's Association Hall, with some of our members very keen to try on and parade the latest Summer Fashions, we extend our grateful thanks to Gail, Lorretta, Marianne, and Sam for being our Catwalk ladies. All the outfits were put together nicely and very flattering.

The weekend of November 13 & 14 Lake House Garden was open to the public and our ladies were chosen to do the catering, we were kept busy with the many visitors attending. The weather was quite mild, but a tad windy. After the 5kms drive down Maitland Road the gardens seemed like a veritable oasis, a place for everyone to enjoy.

At our meeting on the November 17 Diane gave us a talk on NSW highlighting the Sydney harbour bridge, the Opera House, and many regional areas. Vicki brought in some indigenous artefacts, thank you to both ladies, Australia being the subject for our educational topic this year.

There was a good attendance for the 'Two Crafty Ladies stall' held on Friday 19 with a morning tea and lunch provided for the cost of entry, and the CWA ladies did not need to bake this time, those 'Two Crafty ladies' having many skills! There was a display of 2 quilts for the show and tell, one only being completed that day, if you missed the girls this time, they will be back again in 2022.

December 1st will be our last social for this year, so please make a note and come along for a cuppa and a chat between 9.30 and 11am, non-members are always welcome.

Are you coming into 'Bev-Town' on Friday December 10? Don't forget our Christmas Raffle at the Lions Kiosk, and if you can't make it on Friday, we will be there again on Saturday 11, not only selling tickets for the many donated prizes, but also with homemade cakes to tempt you.

With Christmas just around the corner what better time than to tickle your tonsils on Sunday December 12 with our sing-along at the CWA hall starting at 1.30pm, cost \$5 for afternoon tea, **all are welcome** so bring along your singing voice and let's raise the roof---well not too much as the ceiling still needs fixing!

Our last meeting for 2021 (where did that year go?) will be held on Wednesday December 15 starting at 10am.

We would like to wish everyone a very happy Christmas and a safe New Year.

If you would like any further information regarding the CWA, or are interested in hiring our hall in the future please ring Pat or Wendy Hambly on 9646 1481



101.3 FM
VOICE OF THE AVON LOCAL RADIO
PROGRAM



SUNDAY

6.00 – 10.00 Sunday Breakfast - Terry
10.00 – 1.00 Easy Sunday - Denni

MONDAY

6.00 – 10.00 Monday Breakfast - Bob
10.00 – 2.00 Monday with Lesley-Ann
2.00 – 4.00 **What's New In Country** - John
4.00 – 7.00 Celtic Note - Joe
7.00 – 10.00 Classical Sounds - Chris

TUESDAY

6.00 – 10.00 Tuesday Breakfast - Bob
10.00 – 2.00 Country Roads - Joe
2.00 – 5.00 **Rockin' on the Avon** - Denni
5.00 – 7.00 Turn it up Tuesday – Michael

WEDNESDAY

6.00 – 9.00 Sunny Side Up - George
9.00 – 1.00 A Little Bit of Everything – Joe-
1.00 – 4.00 Potpourri - Peter
4.00 – 6.00 **John's Jazz Show** - John
6.00 – 9.00 Back to the Future – Frank

THURSDAY

6.00 – 9.00 Thursday Morning - Joe
9.00 – 12.00 Solid Gold Thursday - Frenchy
12.00 – 3.00 Kaleidoscope – Chris
3.00 – 6.00 Drive – Graham
6.00 – 9.00 Tonking Along - Tonks

FRIDAY

6.00 – 10.00 Friday Breakfast - Bob
12.00 – 4.00 **Michael's Mix Up** - Michael
4.00 – 8.00 Friday Night Live - Terry

SATURDAY

6.00 - 9.00 Saturday Breakfast – Frenchy (TFN)
9.00 – 12.00 Spirit of the Music - George
12.00 – 2.00 Country Trax - Haydn
2.00 – 4.00 Saturday Mix – Graham
4.00 - 6.00 My Kind of Music – Lesley-Ann

Phone: Studios 9641 2422

Sponsorship: 0408 502 711

E-mail: radio6ycr@hotmail.com

Facebook

Voice of the Avon 101.3 FM – 6YCR
(with live streaming)

Website

voiceoftheavon.org.au

live streaming- Voice of the Avon 101.3 FM

82 hours of local presenters each week
Effective 13 October 2021

Changes may be made without notice

CWA York and Father Philip join forces in engaging with the community!

The CWA York Branch held their monthly meeting at our rooms, 154 Avon Terrace, York on Friday, 12 November 2021. An important item on the Agenda was the distribution of funds raised this year; all of which went to worthwhile organisations and causes. It was decided at the meeting that a CWA Cook Book would be given as a School Graduation prize, which seems very fitting.

Our guest visitor was Reverend Canon Dr. Philip Raymont, who is residing at the Holy Trinity Anglican Church Rectory in York. He immediately dispensed with the formality and introduced himself as Philip. Philip is



ministering to the Parishes of Beverley/Brookton, and Quairading as well as York. Previously, he was the Chaplain at Guildford Grammar School for 12 years. The ladies were delighted to learn about him and especially that his mother was a member of the CWA for 73 years! Philip is very active in getting to know as many people as he can, including the local Men's Shed. He is a very amenable man with a great sense of humour. Philip is pictured here regaling us with his background and stories.

Paula Armstrong, our International Officer, handed out laminated copies of the six seasons in the Aboriginal weather calendar, which is very insightful. Kambarang is the October/November season and it is also known as the Season of Birth. December/January is the Birak season, also known as the Season of the Young.

The day before our meeting was of course Remembrance Day. Our President, Dawn Ainsworth, and Vice-President, Jean Wykes, represented us all in honouring the fallen by laying a wreath at the war memorial in York.

CWA York will be holding their Christmas lunch in our rooms on Friday, 3 December – a lovely opportunity to share food and enjoy companionship.

We wish everyone a safe, peaceful Christmas and a brighter 2022.

Marion Bateman

CWA York Member & Media Reporter



Beverley District High School

Independent Public School

'Working in Unity to make a difference for every child'

BDHS sits on the land of our Noongar people and we acknowledge them as the traditional custodians of the Ballardong region.

The Wheatbelt Ball

Our high school students had the opportunity to attend the Wheatbelt Ball hosted by Brookton DHS this year and were accompanied by Mrs Wallis, Mrs Freeman and Mrs Mearns as bus driver. They all had a wonderful time and looked absolutely amazing!!



Year 3 Pasta Making

Our annual Year 3 pasta making was a huge success and the students absolutely loved it. Congratulations to Mrs Sera Minchin on another fantastic year of pasta making. A thank you to all our wonderful family helpers, the day could not run smoothly without your help.



Avon Cricket Blast Cup

On Friday 22nd October, Beverley hosted York, Brookton and Pingelly for an upper primary cricket carnival. Over 100 students participated in total on our magnificent town oval. Our students had a great day which wouldn't have been made possible without the support of Jacinta Murray, Carissa Shaw and Cara Hammond who gave up their time to score and umpire for our teams. Thank You Ladies!!

Big thank you to Mrs Narelle Bailey for organising this event!!



Secondary Interschool Athletics

This year's secondary interschool athletics was hosted by York DHS. Despite all the rain and wind, our secondary students put in an outstanding performance.

Congratulations to Allira Cover for winning Year 9 Champion Girl, Nathan Styles for winning Year 9 Champion Boy and Courtney Mullaley on winning Runner Up Year 7 Champion Girl!! Beverley also won the Handicap Shield and got 2nd in the Overall Shield!!! Well done secondary on your fantastic team efforts!!



Microsoft Visit

Thank you to the team from Microsoft for their visit to our school. This was an outstanding initiative with other Wheatbelt schools invited to join us. The students and staff involved all were treated to the very latest in technology and saw a glimpse of what the future holds for the advancement of digital technologies and transformation.

Thank You to Mrs Aliesha Murray for her co-ordination and organisation with the event.



Save the Date

Kindy/PP Christmas Concert – 2nd

December

Presentation Night – 15th

December

Year 6 and Year 10 Graduation –

13th December

Last Day of School – 16th

December

Term 1 2022 Students First Day –

31st January



Did you know that the Ballardong Noongar name for the area closely approximating the Shire of Beverley is WERGIJAN?

(Source: *About Beverley*, <http://www.beverleywa.com/about.html>)

In November 2020, I wrote to the Council of the Shire of Beverley to suggest that consideration be given to a dual name for our local government area—that is, Shire of Beverley / Wergijan. My submission to Council was as follows:

As a passionate supporter of racial justice, an historian, and scion of one of Beverley's earliest British settler families, namely Thomas and Ann Maria Edwards, Thomas being the first police officer posted to the Beverley district, I wish to propose that the Shire of Beverley take a significant step towards promoting an enduring Reconciliation between the Indigenous and non-Indigenous people of our community by adopting the name 'Shire of Beverley-Wergijan'.

The *About Beverley* website notes that "The area (of Beverley) is known as Wergijan to the Ballardong people." Given that the Ballardong people are the Traditional Owners of the land in this local government area and have dwelt here for at least 45,000 years, representing one of the oldest living cultures in the world, it seems only fitting and proper that the LGA of Beverley also carry the name for which it was known over so many millenia. At the same time, I believe it is appropriate to signify the shared history of the Ballardong and Wadjellah (white/non-Indigenous) peoples since 1831—albeit, a history marked for many decades by a "cycle of misunderstanding, dispossession and violence" (McLaren, G. & Cooper, W. 2002, *Beverley: Our Journey Through Time*, published by Shire of Beverley) —by compounding the names 'Beverley' and 'Wergijan' to form an expanded, new name for the LGA: 'Shire of Beverley-Wergijan', or 'Shire of Wergijan-Beverley'.

I appreciate that much community consultation would need to be undertaken if this proposal is ever to be adopted and implemented, particularly with the Ballardong Noongar residents within the Shire. My purpose in presenting this proposal now, when there is heightened awareness of Australia's actual history, as opposed to the whitewashed one, is to raise awareness in the hope that this idea will gain traction within our community. I believe very strongly that, in common with all communities across Australia, the Beverley community can only benefit from engagement in and progress towards a lasting Reconciliation between peoples which have had an historically fraught - at times, tragically violent and mutually destructive - relationship, which left an especially terrible legacy for the Ballardong Noongar people. As a descendant of British forebears who both built this district from very humble beginnings and participated in the process of dispossession and subjugation of its traditional owners, I feel a particular duty to drive a more just 'settlement' of this district's history and its modern identity. We have evolved our understanding of the past and see it in a truer light; now it is time to begin healing the wounds and to promote mutual respect, reconciliation and racial justice. (END OF SUBMISSION)

What can you do?

Please have your say, whatever your views might be on this idea.

I urge you to express your views to members of Council and/or to me, Anthony Negus, 0401367334 or PO Box 218, Beverley WA 6304. I ask only that any submission be made in the same spirit of good faith and mutual respect on which this proposal is predicated.

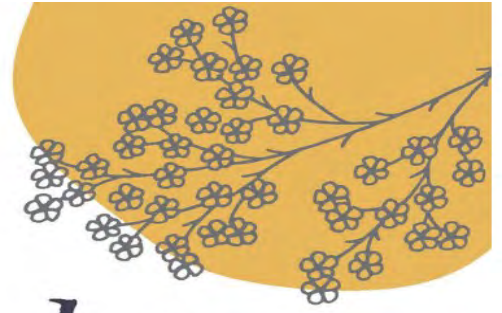
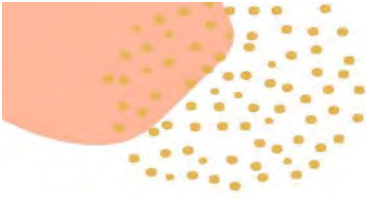
BEVERLEY C.W.A

CHRISTMAS RAFFLE AND CAKE STALL



**A HUGE RAFFLE ON THE 10TH AND 11TH OF DECEMBER
2021 AT LIONS KISOK**

**A CAKE STALL ON SATURDAY THE 11TH AT LIONS KISOK
SO COME ALONG FOR SOME HOME BAKED
GOODIES AND A CHANCE TO WIN ONE OF
OUR GREAT PRIZES**



Spring Back to Beverley




Calling all clubs, groups, organisations and businesses of Beverley. The Spring Back to Beverley committee are collecting photographs to display on the festival weekend of 24th & 25th September 2022. If you can help us... scan old and new photographs and drop the USB into Jacinta Murray at the shire.



SAVE THE DATE

Spring Back to Beverley

24th & 25th
SEPTEMBER 2022



Celebrating 150th Anniversary of Beverley Road Board,
150th Anniversary of Dead Finish Museum &
other significant Shire of Beverley projects.

Be verley Western Australia
Be very you

FUN FACTS



1. The tallest Christmas tree ever displayed was in Seattle, Washington. It measured 221ft (67m) tall.
2. 1 in 3 men wait until Christmas Eve to do their shopping.
3. The biggest display of lights ever made is in Australia. It has 1,194,380 LED's covering 3,865 sq. meters. David Richards has used his home to raise \$20,000 for SIDS and Kids ACT since 2011.
4. Christmas trees usually grow for about 15 years before they are sold.







Christmas TRADING HOURS

Our centre will be closed for the Christmas period from Thursday 23 December at 4.30pm and reopening Monday 17 January 2022.



141 Vincent Street, PO Box 310 BEVERLEY WA 5353
08 9646 1600 beverley@crc.net.au
beverleycrc.net



Merry Christmas & Happy New Year

Thank you to our wonderful community in Beverley we wish you all a very Merry Christmas and a safe and prosperous New Year in 2022.



THANK YOU, FAREWELL & BEST WISHES ZOE

Our Customer Service Officer aka science nerd, Zoe Wilkinson has officially finished working at the CRC in November to start her new career as a Paramedic. She will be greatly missed by all of the CRC team and management committee, a big thank you for all the years of work and all of the laughs. Congratulations Zoe, your second family are so proud of you and wish you all the best in your new job.



COMMUNITY MORNING TEA

Thanks to our community members for welcoming our new local police officer Terry to Beverley, we had a good turnout even with the short notice. If you haven't bumped into Terry yet he's already a fully fledged Men's Shed member and keen to be a part of our community.

WIN A \$200 KITCHEN WAREHOUSE VOUCHER

Our annual Christmas cooking competition theme is year is Christmas Cupcakes. All entries to be in by 10.30am on Wednesday 15 December. Minimum of 6 cupcakes per entry, contact details must be on bottom of the plate. Enter as many times as you like. Further details in the weekly Bev Bulletin.



KID'S CHRISTMAS CLAY CRAFT WORKSHOP

We are hosting a morning Christmas crafting with clay workshop for kids on Wednesday 22 December from 10.30am - 11.30am, just \$5 per child to cover materials. Registrations are essential prior to Friday 17 December at 4pm. If we do not have enough registrations by this date we will not run the workshop.

STAY SAFE AROUND WATER - KIDS ALIVE DO THE 5

Register now for this fun morning of song, dance, reading and activities followed by an excursion to the pool. All participants receive free entry into the pool and bags of goodies at the end. Held on 02 December at the Moash building, RSVP 9646 1600.

BEVERLEY LIBRARY

Are you planning to chill out and read a few books over the festive season? Be sure to get to the library before 4.30pm on Thursday 23 December to grab a few novels or DVD's. We reopen on Monday 17 January 2022, so if you have books at home that you need to renew and can't make it into town, call us and we can assist you over the phone.





Beverley Badminton

would like to wish everyone a Merry Christmas and a Happy New Year

Congratulations to 2021 Winners:

Champion: Cara Hammond

Runner Up: Chris Brooke

Champion Doubles: Cara Hammond & Chris Brooke

Double Runner Up: Bob Bignell & Lately Jacks

The Committee and Members would like to THANK all our local business sponsors this year:

The Beverley Hotel

IGA

U beauty and Hair

Avon Trading

Beverley Post & News

SJM Bricklaying

Look forward to seeing members at the start of next season: Wednesday 9th February, 9am @ The Beverley Shire Hall.

NEW MEMBERS WELCOME

For More Information or Enquiries

Find us on Facebook

or email beverleybaddy@outlook.com

or contact Elaine on 0408 903 478

Yarns & Yarns

EVERYONE IS WELCOME FOR A FUN MORNING OF CRAFTING - EVERYTHING FROM CROCHETING, KNITTING, SCRAPBOOKING TO SEWING. JUST BRING YOUR BYO CRAFT PROJECT AND JOIN US FOR LAUGH AND MORNING TEA.



Mondays at 10.30am
CRC Cornerstone
Morning tea available \$3

BEVERLEY Clay Target Club

Nicholas Street, Beverley

We meet one Sunday a month and anyone who would like to try clay target shooting is most welcome to come along. Gun and ammo can be supplied by us. If you are interested in becoming a new member or would like more details.

Call 0413 058 945

2021 SHOOT DATES

DATE

EVENT

Sunday 12 December CAPTAINS CHOICE

All shoots start at 10.30am



COUNTRY LINE DANCING

Thursday mornings at the Town Hall

Enquiries to
Jan 0429 952 177



Take the opportunity to join in gentle activity aimed at general fitness and falls prevention.

Stay Active

with the
Beverley Everlastings

Stay Active is a weekly one-hour keep fit session for those who find gentle aerobic, strength, balance and stretching exercise beneficial to their health.

The exercises are designed for over 50s, but younger participants are welcome. Those less mobile or those recovering from accident and illness also find the exercises useful.

Chair exercises are available and participants can opt to do all or some of these.

Stay Active

Date: Tuesday's

Time: 9:00am

Place: Beverley Recreation Centre

Cost: \$1

Come along for social-distancing fun activity. Stay Active is a volunteer community health program coordinated by the Wheatbelt Health Service



Government of Western Australia
Department of Health

Card Games at CWA

SAMBA

WHEN: Saturdays

TIME: 1.00pm

WHERE: CWA Hall

Afternoon Tea provided - Phone 9646 1271

BRIDGE

WHEN: Monday's

WHERE: CWA Hall

BEVERLEY QUILTING GROUP

We meet on Tuesday's at the Masonic Lodge in the back room. We start at 9.30am and finish at 2.00pm

\$2 donation per session and BYO lunch.

For further information contact Jan Sherwood on
0438 019 510



BEVERLEY
HOSPITAL
AUXILIARY
INC

OP SHOP

Open Fridays

11:00am - 2:30pm

December 2021

Dec 03

Glenys Lane, Kate Badger, Pat Pepper

Dec 04 (9am - noon)

Betty Lobb & Erica Murray

Dec 10

Betty Lobb, Glenys Petchell, Roslyn Taylor

Op Shop News

We would like to advise that we will cease taking donations at the shop and in the bins from Saturday 4th of December till we reopen in 2022.

Please note that the donation bins will be removed till we open, and I would ask that donated goods not be left in front of the door please whilst we are closed.

Thank you for supporting our op shop and we hope to see you again next year.

Last day of Sale & Closure is December 10th
Regards

Glenys Lane - President

LOCAL BUSINESSES



WESTDALE TIMBER

T/A R. L. & T. L. TAMBLYN ABN. 106 854 06

TREE TRUNKS REMOVED TIMBER SLAB SALES

PLEASE DON'T BURN UP GOOD USEABLE TREE TRUNKS
SAVE THEM FROM THE CROPPING CLEAN UP FIRE
DON'T LET THEM ROT AWAY TO WASTE
I WILL CHAINSAW THE TRUNK OUT OF THE TREES
LEAVING THE BRANCHES FOR YOU TO PUSH ONTO STUMPS
TO EASILY BURN UP

300MM AND LARGER TREE TRUNKS
WANTED DEAD OR ALIVE BY THE TRUCKLOADS
STANDING DEAD OR STORM WINDFALL TREES REMOVED
MARRI/RED GUMS, JARRAH, WANDOO/WHITE GUMS,
SHEOAK, TUART, BLACK BUTT AND PINES

Save yourself time and effort.

PLEASE CALL RICKY 0419 903 829



*Servicing Beverley & Surrounding Areas
Local Owner Driver David Johnson
PH: 0428 995 950
Email : Gameoncontracting@gmail.com*

*For all your Transport needs:
Side-tippers, Endtippers, Float
Liquid Fertilizers, Drop Decks &
Semi water cart for roadworks:*

*For your Earthwork needs:
20 tonne Excavator, Grader &
Loader with Accredited Load Rite System*



E Squire Contracting Services

Water Supply
Windmills & Accessories
Solar Pumps:
Sales, Service, Installation
Fencing & Yards
Trenching & Poly Pipe Laying

E Squire Contracting Services
Beverley and surrounding districts

Phone: 9646 0800

Errol Squire 0438 682 687

Painter Decorators

All repairs & painting

Lyndon & Cameron Grover

0427 661 302

lydongrover@bigpond.com

Reg: 3941



- Plastering
- Pressure Cleaning Roof
- Gyprock
- Spray Painting
- Repairs
- Gutter Replacing



OPTOMETRIST
AVAILABLE ON
TUESDAY'S
in Beverley



**Peter Tidman
OPTOMETRIST**

If you are over 65 years of age,
you are entitled to a yearly
bulk billed check-up.

We encourage you to keep
on top of your eye health.

You can find us at the
RSL Hall, 50 Forrest Street, Beverley.

Appointment bookings
Please call Beverley CRC 9646 1600.



BEVERLEY ELECTRICAL SERVICES

BEVERLEY ELECTRICAL SERVICES

EC 006578

*Proudly servicing Beverley and surrounding
districts since 2010, this locally owned
family business can help you with all your
Electrical needs*

Karl and his team offer

All your General Electrical Requirements PLUS

- Cel-Fi Mobile Boosters
- Split Air Con Installations
- Quality LED Lighting Solutions for any application
- Trenching for underground power
- Quality Solar Systems
- Telephone & Data Cabling

**Call Karl on
9646 1222**

**4 De Lisle Street, Beverley
sales@beverleyelectrical.com.au**

**TV ANTENNAS
UHF CB Sales, Service**

Onsite installation & repairs.

Bench repairs.

TV reception problem solving
& new systems.

Satellite TV systems supplied and
installed.

Caravan and mobile home TV problem
solving.

Mobile phone reception solutions
for farm and vehicles.



**Regional Antennas
Plus**

**Phone: Alan Primrose
0408 002 965**

Established in 1997, proudly servicing Beverley and surrounding areas



**BEVERLEY GAS + PLUMBING
SERVICES**

PL 9723
GF 017690
BFL 3108

**Beverley Gas and Plumbing is your local plumber
for all your plumbing and gas needs.**

- Renovations
- Septic and leach drains
- Gas installs and maintenance
- Hot Water
- Blocked drains
- Dripping taps
- Backflow prevention
- Sewerage conversion

DJ YATES

Authentic Heritage Restoration

BRICK AND STONEMWORK
RESTORATION
AUTHENTIC REPOINTING OF
MORTAR, RISING
DAMP RECTIFIED
PROPERTY
MAINTENANCE



**PHONE DAVE
0419 041 542**



Kodie Fleay

Phone 0418 929 141

Email beverleygandp@gmail.com

NATWAY FURNITURE & CONSTRUCTION

ABN: 62 824 726 465

WAYNE & NATALIE ASHWORTH

Qualified Carpenter &
Joiner Tradesman

General Building Work

Furniture Construction
& Restoration

CONTACT US

27 Brooking Street, BEVERLEY

Wayne 0417 973 415

Natalie 0429 491 039

natwayfc@bigpond.com

Mulesing Contractor



For all your
Mulesing Requirements
Beverley, York
and surrounding areas

Contact Terry Slade
0427 635 065

SARAH SOMERS

LAWYER

SERVING THE WHEATBELT COMMUNITY

Family Law - Divorce - Separation
Property Settlement - Restraining Orders
Defacto Relationships
Children's Issues - Contact/Residence
Competitive hourly rates
Reduced fee for Initial Consultation

📍 85 Fitzgerald Street, Northam WA 6401

☎ 9622 9687

✉ sarahsomers@iinet.net.au

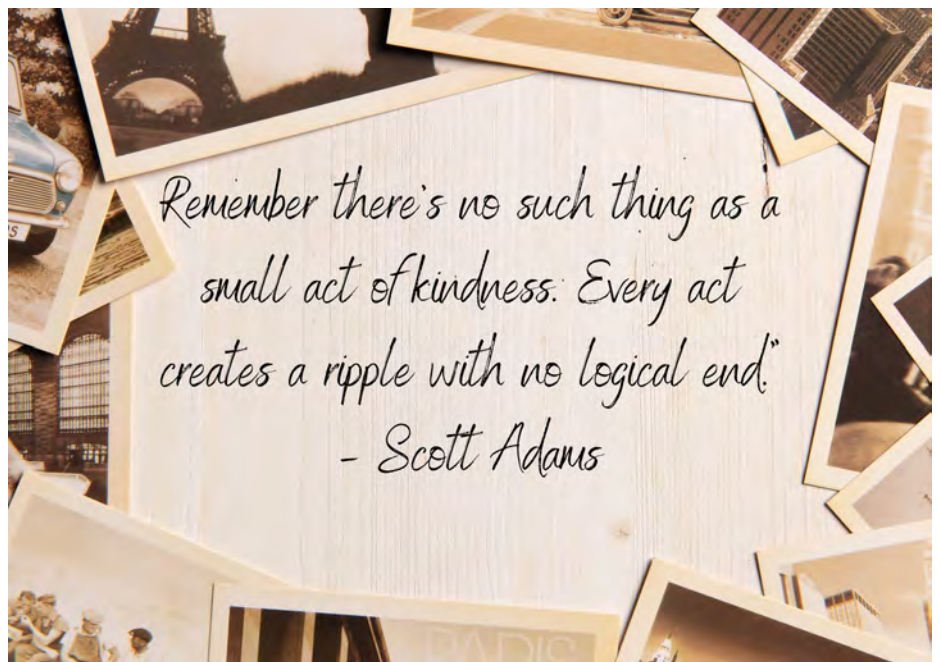


Based in Balkuling...Servicing Statewide!

For all your Lime, Gypsum, Urea, Sulphate of Ammonia,
Chook Manure and Compound Fertiliser Spreading needs.

We also supply, deliver and spread Fertiliser from bulk bags for Hobby Farms!

Ph. Jim - 0427 777 765
ballantyne@bordnet.com.au



TAX RETURNS

FORTIZ BUSINESS SOLUTIONS

(Registered Tax Agent & Certified Public Accountant)

Tax Returns for all entities
Business Consulting
Software solutions / setup
Bookkeeping / Accounting

OFFICE HOURS:

FRIDAY 9.00am – 4.30pm

101 VINCENT ST (Bankhouse) BEVERLEY

Please phone for an appointment

9646 0282



Beverley
MASSAGE THERAPY

Monday 9.30 - 6.30pm
Friday 9.30am - 2.30pm
by appointment

Weekend appointments also available at certain times. Call or message Christine on 0408 369 998 or visit www.facebook.com/vitaminAskincare

In Beverley Chiropractor Centre in the Cornerstone Building (Entrance off Dawson Street)

RA-AN ENTERPRISES

EARTHMOVING CONTRACTOR

Dam sinking
Dam cleaning & enlargements
Fence Lines
Shed sites etc.



Dozer & Excavator Hire
Dozer with Rake
Can provide Bobcat - Backhoe - Grader - Side Tipper
For larger jobs 54 tonne Dozer

Contact: Ray 0428 936 621

BEVERLEY CHIROPRACTIC CENTRE

Dr Liam Welfar

CORNERSTONE BUILDING

141 Vincent St, Beverley
(Entrance off Dawson St)

08 9646 0523

Back Pain? Neck Pain? Headaches?
Sporting Injuries? Postural Problems?
Call us today to find out how I can help.

Hicaps facility available onsite

WHY CHOOSE US

- ✓ Family Tradition Since 1945
- ✓ We are committed to deliver the best possible Customer Service experience for our Customers
- ✓ No pushy salesman on commission
- ✓ Our Team are direct Employees of Brick and Mortar Restoration
- ✓ We train Apprentices in Heritage Brick Restoration
- ✓ No External Call Centres
- ✓ The Owners of the Business Ross & Tammy Femihough are always available
- ✓ State Distributor of Thorhelical products
- ✓ Approved Installers for Thorhelical Remedial Solutions
- ✓ Employers Workplace Confidence Member
- ✓ Workers Compensation Insurance
- ✓ Product and Public Liability Insurance \$20 Million
- ✓ State Distributor of Round Tower Hydraulic Natural Lime

Over 60 years of experience in the Building Industry, Restoration Industry, Insurance Builders and Brick Repairs Industry

- Tuckpointing | Mortar Pointing
- Stonemasonry | Crack Repairs
- Brick Restoration
- Limestone Restoration
- Rendering | Ceiling Repairs
- Pebble Dash Render
- Stucco Render
- Lintel Replacements
- Wall Alterations | Carpentry
- Plastering | Paint Removal
- Lath and Plaster

Call 1800MORTAR (667827) www.brickandmortarrestoration.com.au info@brickmortar.com.au

Unique Strokes W.A. Painting & Decorating

Reg. No. 4236

ROB BAIN

QUALIFIED LOCAL TRADESMEN

For Guaranteed Traditional
Workmanship & Prompt Free Quotes
Phone: 08 9647 2102
Mobile: 0418 904 013



SHEDS FOR ALL PURPOSES



Offering robust protection from the elements, our Australian standard modular building systems are engineered for strength in all conditions.

Designed for the agricultural and hay markets, with the flexibility to suit many other applications, our shed range will safeguard your valuable farm machinery and business assets.

- Supply only or supply and install options available
- Western Australian owned and operated business
- Locally manufactured products and components
- Standard and customised designs
- Fully bolted framing system
- Project management services including council approvals
- Registered builder with an extensive farming background



With an extendable modular design including optional bay and end wall additions plus self-build to fully installed options, there's a customisable system to suit your needs now and for years to come.

0427 424 672

ryan@phoenixbuildingsystems.com.au

www.phoenixbuildingsystems.com.au

LEH EARTHMOVING



LOCAL BUSINESS, SERVICING BEVERLEY FOR OVER 10 YEARS

Beverley Earthmoving & Grading

GRADER - BACKHOE - BOBCAT
TIP TRUCK - EXCAVATOR
SIDE TIPPER - DOZER

ROAD BUILDING AND MAINTENANCE

FIRE BREAKS - CONTOUR BANKS - ROADED CATCHMENTS

HOUSE PADS - SEPTIC SYSTEMS - SAND, GRAVEL AND BLUE METAL

DAM BUILDING AND CLEANING

CALL- DAN WILKINSON

0417 093 090

EMAIL- DAN.ZOE@PM.ME

WWW.FACEBOOK.COM/LITTLECOHILLEARTHMOVING/

BROOKTON PLUMBING

ABN: 37 675 595 336

FOR ALL YOUR
PLUMBING MAINTENANCE
AND GAS FITTING NEEDS

*PLUS SEPTIC WASTE
REMOVAL

PHONE:

SEAN 0413 480 543 or
NATASHA 0422 013 889

PL: 7130 GF: 006947 SWR: T235

AVON GLAZING

Everything Glass...

Windows Splash Backs
Mirrors & More

Ron Robinson
0427 185 291

Countryside Memorials



Cast Stone
Granite
Marble
Plaques

Added Inscriptions
All Repairs and Restorations

25 YEARS PROFESSIONAL EXPERIENCE
FREE DESIGN AND QUOTE

Servicing All W.A. Country Areas

9696 0466

OXTER SERVICES

www.oxter.com.au

oxter@westnet.com.au

NEED PRACTICAL TRADE ASSISTANCE?

D & M Services

(Design and Manufacturing Services)

Solving a range of practical needs and problems..

Specialising in:

- ✓ Kitchen renovations
- ✓ Shop fitting and modifications
- ✓ Furniture restoration
- ✓ General carpentry
- ✓ Alterations & installations
- ✓ Metal based fabrication
- ✓ Motorhome and Caravan fitouts
- ✓ Pergolas, Decks & Gazebos
- ✓ Designing and planning

Guy Slingerland

0403602335

 **VALLEY FORD** 

- NEW & USED VEHICLES •
- SERVICE & PARTS •

9622 5588

www.valleyfordnortham.com.au

Cnr Peel Tce & Fitzgerald St, Northam

WANTED



BLOWNOUT SHEARERS

Contact: Jack Dugan Phone: 0450609281

Email: surebetss@hotmail.com

Shearing services provided, cost plus rate or cocky shearing, full crew up to five stand available, clean, tidy, professional 25 years industry experience.

**VALLEY AIR
CONDITIONING
& REFRIGERATION**
0408 755 466

Supply and Installation of all types of air-conditioning and refrigeration systems. Split, Ducted, Evaporative, service and repair to domestic, industrial and commercial.

Throughout the Avon Valley and Wheatbelt, no job too far, call Mark for a free quote

Email valleyaircon@outlook.com

ARC Lic AU42118

**BEVERLEY
STORAGE & TOWING**

HUGE NEW PREMISES LOCKED & FENCED

\$100 A MONTH CARS, CARAVANS, BOATS, MOTORHOMES WE HAVE ALL OF YOUR STORAGE NEEDS COVERED.

TILT TRAY WITH WINCH CAR TRAILER
PICK UP AND DELIVERY - ALL AREAS

BRETT HIGGINS

0400 048 976

beverleystorage@hotmail.com

www.facebook.com/BeverleyStorage



NORTHAM HYUNDAI

SALES ★ SERVICE ★ PARTS

9622 5588

www.northamhyundai.com.au

37 Fitzgerald Street, Northam

PURSLOWE TINETTI
FUNERALS .com



Cremations & Burials

Country or City

Pre-paid Funerals

*Arranged in your home or
264 Fitzgerald St Northam*



AUSTRALIAN
FUNERAL
DIRECTORS
ASSOCIATION

Call the Tinetti Family
9622 1411

Bluejay
AG SOLUTIONS

  BluejayAg

Lorretta Adams

Heavy Vehicle Accreditation Auditing

WA Certified Auditor #208982

Authorised to Conduct **Main Roads WA**
Heavy Vehicle Accreditation Auditing

(Fatigue & Maintenance, Dimension/Loading & Mass
Management Modules)

Book Online

www.bluejayag.com.au

*Flexible service, able to meet at a mutually convenient
location*

 hello@bluejayagsolutions.com.au  0437 282 797

BEVERLEY DEZIGN

Renovations,
Alterations, BBQ's,
Brick Fences, Steps,
Retaining Walls,
Brick paving laid in mortar

Phone

Michael 0407 645 001

Barry 0417 181 724



AvonValleys
WINDSCREENS
"We Come to You"

0429 001 393

www.avwindscreens.com



northam optical



- Bulk billing to Medicare
- HBF & DVA Provider
- Competitive prices
- Great range of frames & sunglasses
- Locally owned and operated

www.northamoptical.com.au

138 Fitzgerald St Northam WA P 9621 1131
E northam.optical@yahoo.com.au



Old charm country pub
Accommodation and free camping
Air con and character dining rooms
VISIT FOR THE EXPERIENCE
OPENING TIMES:
Everyday Dinner from 5.00pm
Wednesday—Sunday from 12.00pm
for lunch and dinner

PH: 9641 4095

444 GREENHILLS ROAD, GREENHILLS

K² STOCK

**T
R
A
N
S
P
O
R
T**

Call Alec Ferguson
(Fergie)

0417 934 253

k2stocktransport@outlook.com

*Available for sheep and cattle
movements in Beverley & Surrounding
Districts*

*Max Loads:
15 x 300kg Cattle | 33 - 60 Sheep (size matters)*



BEVERLEY
PHYSIOTHERAPY

**Kahlia Ferguson
Physiotherapist**

Located in the Cornerstone Building. Appointments
available Monday and Tuesday

Sports injuries, osteoarthritis, muscle strains, neck
pain, back pain, headaches, post-op management

Women's and Pelvic Health reviews available with
Physiotherapist **Janine Murray** monthly

Enquiries and Bookings:

Phone 0437 709 577

Email: admin@beverleyphysio.com.au

Online Bookings: www.beverleyphysio.com.au

Located behind the Beverley Medical Practice Cullen House
106 Forrest Street Beverley

WE ARE BACK

Open 8.00am - 1.00pm
Monday, Wednesday & Friday



All enquiries to Di the Phlebotomist -
Phone: 9646 0724

*Please note that Western Diagnostic Pathology
will accept all pathology collection forms.*

York Chiropractic

MacLachlan Centre - 4 Trews Road



Clinic available every week

9641 1500

Dr Alexandra (Sacha) Browne
B.Sc (Chiropractic) B.Chiropractic



Also available in Cunderdin and Merredin

C & B TRANSPORT

DELIVERING GENERAL FREIGHT AND CHILLER GOODS

3 DAYS PER WEEK OR AS REQUIRED

TO

BEVERLEY, BROOKTON, PINGELLY

FROM

PERTH DEPOT CANNINGVALE MARKETS

PLEASE CONTACT PAUL BALDWIN

ON

0417 953 968 or 08 9646 0461

BIG ENOUGH TO DO THE JOB SMALL ENOUGH TO CARE

BEVERLEY *Transport*

Your local carrier for over 30 years.

**GRAIN, FERTILISER, LIME, HAY,
WOOL AND SIDE TIPPERS AVAILABLE**

Garry & Sarah Miller

0428 464 066

admin@beverleytransport.com.au

ChemDry®
Drier. Cleaner. Healthier.™
Betta Finish



Superior carpet
& upholstery
cleaning

Freecall 1800 017087

bettafinish@wn.com.au

Fax 08 96225473



AVON TERRACE DENTAL | YORK
your smile. our passion.

Now Open 9am to 5pm Monday to Friday!

Our Services:

- Preventative and General Dentistry
- Children's Dentistry
- Anxiety Management
- Cosmetic Dentistry
- Implants
- Endodontics
- Crown and Bridge
- Teeth Whitening
- New Dentures and Repairs
- Emergency Dental Care
- Veterans' Affairs

*New
Patients
Welcome!*

Participating provider for

129 Avon Terrace
York WA 6302
(08) 9641 2123



York
Estate Agents

York Estate Agents
(Beverley Division)

Good, Bad or Ugly We Sell!

Free Appraisals

"Properties WANTED we have qualified buyers waiting now"

Estate Experts
Professional and Trustworthy

Residential and Rural - Mike Bawden
0403 268 158

Rentals - Jenette Callaghan
0418 929 011

Office - 9641 1335

Email: yorkfn@westnet.com.au

www.yorkfn.com.au

Dawson's Concrete & Reinforcing

“Your Local Beverley Concreter”

- Concrete Formwork & Steel Fixing
- Driveways, Shed floors, Maintenance pits, Silo pads, Super sheds, House pads
- Fully mobile service
- Over 30 Years Experience
- 7 Days A Week
- Professional, Reliable Service

Phone for a Free Quote

SANDY DAWSON

Mobile: 0417 375 221

Email: pameladawson@bigpond.com

FB: www.facebook.com/dawsonconcrete

**SHAZMAC
PLUMBING**

PROUD TO BE YOUR LOCAL PLUMBER

Plumbing Licence: PL 5829 Gas Fitter Licence: GF 7422 RHL: L100443
ABN: 18 531 685 326

For all your plumbing & gas fitting needs

Phone 0408 189 987

PO BOX 116

BEVERLEY WA 6304

shazmac1@westnet.com.au

NO job is too big or too small.



DRUG & ALCOHOL COUNSELLING

The Wheatbelt Community Drug Service Team will be visiting Beverley Hospital fortnightly.

Appointments phone Jackie Darby 96211 055.



Primary Health Services

Available to the community of Beverley

Child Health Nurse - 9690 1320

To make an appointment, Northam Hospital Admin Staff will assist you in setting an appointment time, which will be, on most occasions, a Monday

Northam also provide Child Development Services via referral - 9690 1320

School Health - 9641 0200

Dietetics - 9690 1320

Occupational Therapy - 0429 466 224

Physiotherapy - a doctors referral is required - please send all referrals to PO Box 312 Northam 6401. Clients will be acknowledged with a letter informing them of the approximate wait time.

Podiatry - email: admin@comopodiatry.com.au or call 9450 6200. Attendance is generally a Monday.

If eligible for an EPC Plan which is through referral from a Doctor, Como Podiatry will bulk bill Medicare for a max of 5 sessions per year. Non referral clients are may be eligible to claim Private Health for the \$60 sessions.

A Doctor's referrals are generally faxed to the service provider, Como Podiatry, who contact the patient by phone and make an appointment.

Social Work - Phone 9690 1320

Speech Pathology - 9690 1320

These services are provided by WA Country Health Service and are free of charge. If you have any concerns about your own health or your child's health and development, please phone the relevant health professional to discuss your concerns.

Alternatively, you can speak to the Child Health or School Health Nurse, or your GP, to discuss your concerns and to determine the most appropriate referral.

Avon & Central Primary Health Promoting Healthy Lifestyles

Vines Aesthetic Clinic

Rejuvenating and Invigorating



Put the glow back in your skin
juvenating and invigorating

- ✓ Dermabrasion Therapy
- ✓ Led Therapy
- ✓ Injectables
- ✓ Derma Pen
- ✓ PRP



VinesAestheticClinic

KARRADALE LIVESTOCK TRANSPORT
YORK LIVESTOCK TRANSPORT
ABN 64 054 007 721

We service Beverley, Brookton, York
& surrounding districts

Available to transport Sheep & Cattle

No job too big or small

Support the local communities

Member of ALRTA

If you need stock moved, Peter would love to
hear from you - 0428 481 281



FAIRCLOUGH WOOL

NEW

DIFFERENT

BETTER

Woolgrowers!

BONUS of \$10/bale when you broker your wool clip or a line of wool (*e.g. lambs, crutching etc.*) through Fairclough's.

BONUS - not ready to sell your wool yet?
Fairclough's pays you to store your wool on your farm.

- ◆ Buying oddments/shed clean ups
- ◆ On farm weighing
- ◆ Wool packs replaced
- ◆ Same day payment
- ◆ Growers large & small



Enquiries and T's & C's Mike Fairclough 0429 635 999



BEVERLEY
PHYSIOTHERAPY

To all our valued clients

Thank you for your continued support of Beverley
Physiotherapy throughout 2021

We would like to wish you and your family a very
Merry Christmas and a Happy, Safe and Prosperous
New Year.

Beverley Physio will be taking a short break over
Christmas and will be closed from 22nd December until
10th January. There will be restricted hours in January
2022 as Kahlia starts maternity leave. Normal services will
resume from end of January 2022.

We look forward to seeing you all in 2022



BEVERLEY HISTORICAL SOCIETY

Can You Help?

We have had a request from Mary Nannup who is researching family history and has come to a dead-end.

Were there any aboriginal people recorded living in the area in the 1800's by the names of; Wallace, Smith, Kajaman, Gentle, Parker, John Wallace, Mary Polly Parker, Janet Blanche Wallace, William Smith? We would appreciate your help.



BEVERLEY HORSE & PONY
CLUB
NOTICE OF AGM



9am the 12th December @ Beverley HPC
Clubhouse.
All enquiries to Tess Hawke 0419 879 310 or
keely@westnet.com.au

Are you interested in the future planning of Health Services in Beverley?

DOES YOUR HEALTH MATTER?



Call Local Health Advisory Group
 Chairman - Keith Murray
 M: 0458 460 737
 E: jundy52@icloud.com

Local Health Advisory Group

Be heard

Advocate for health services issues important to you

Be involved

Collaborate with local health services to bring about positive change, improving the health and wellbeing of our community

For more information

Contact Keith Murray

0458 460 737 jundy52@icloud.com

BEVERLEY COMMUNITY GARDEN

FUNDRAISING RECYCLE PICKUP

If you have any plastic or glass bottles or cans to be recycled, please consider donating them to your Community Garden.

We will pick them up from you if you ring us.

Betty 0400 569 971
 Maureen 0429 460 073
 Dorothy 0429 989 031.



Reusing & Recycling Resources



The Beverley CRC is supporting the STEAM program run by the Beverley District High School by collecting specific items that can be repurposed by the students.

Items that are being collected are:



Donations taken during business hours at the Beverley CRC

Reduce. Reuse. Recycle.

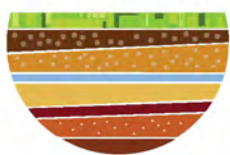




Do you know the Wheatbelt's next Soil Health Champion?

In March 2022, the Talkin' Soil Health event will return to historic York and we want to discover the Wheatbelt's next Soil Health Champion. If you know – or are – someone that has a strong sense of innovation when it comes to improving soil health, we want to hear from you.

Online nominations are open until 28 November, 4.00pm



Talkin' Soil Health



wheatbelt
natural resource
management

www.soilhealth.com.au



BEVERLEY CRICKET CLUB



The Beverley Inkosi Design Redbacks have had a steady start to their quest to go back to back and win this season's premiership and are currently in third position on the ladder with 2 wins and 2 losses after the first 4 games and are hoping to continue this form into December.

If you are interested in playing cricket this season Beverley has training on Tuesday and Thursday afternoon at the Recreation Ground commencing around 5'ish or you can contact James Adams 0429 461 000 for further information.

Saturday 16th October 2021
Beverley All Out 111 defeated Seabrook All Out for 34

Beverley Batting: Dan Carton 33, Stephen Gollan 31, Beau McLean 19
Seabrook Bowling: Ryan Sheridan 4 for 11, Callum Smith 3 for 22, Shane Taylor 3 for 23
Seabrook Batting: Troy Bassett 11
Beverley Bowling: James Adams 6 for 13, Dale Wansbrough 2 for 7, Stephen Gollan 1 for 5

Saturday 23rd October 2021
Beverley All Out for 118 defeated by Tammin 8 for 191

Beverley Batting: Dale Wansbrough 25, Beau McLean 22, Dan Carton 13
Tammin Bowling: Cory Dixon 3 for 30, Curtis Mackin 2 for 22
Tammin Batting: Luke Button 69, Joshua Axcell 36, Cory Dixon 35
Beverley Bowling: Beau McLean 4 for 26, Jarryd Morton 2 for 15, Dale Wansborough 1 for 29

Saturday 30th October 2021
Beverley All Out for 150 defeated York 9 for 147

Beverley Batting: Beau McLean 45, Stephen Gollan 38, Blake Wansbrough 22, Mitch Ashworth 21
York Bowling: Al Draper 5 for 27, Andrew Jenkinson 1 for 6, Jake Roberts 1 for 8
York Batting: Nick Bush 29, Al Draper 20
Beverley Bowling: Stephen Gollan 2 for 20, James Adams 2 for 26, Jarryd Morton 2 for 30

Sunday 14th November 2021
Beverley All Out for 20 lost to Quairading 5 for 47 (Declared)

Beverley Batting: Jack Ballantyne 5, Stephen Gollan 5, Liam Gollan 3
Quairading Bowling: Brayden Hayes 7 for 8, Shaun Simpson 3 for 10
Quairading Batting: Declan Mills 24, Will Hadlow 13
Beverley Bowling: Stephen Gollan 2 for 10, Dale Wansbrough 1 for 4, Jack Ballantyne 1 for 10

Sunday 21st November 2021
Beverley 4 for 106 lost to York 6 for 192
(Wet Weather Rule)

Beverley Batting: Stephen Gollan 35, Shane White 23 not out, Kodie Fleay 20
York Bowling: Mike Mount-Bryson 2 for 29, Andrew Wherrett 1 for 14
York Batting: Terry O'Brien 95, Al Draper 28 not Out, Darren Chitty 14
Beverley Bowling: James Adams 3 for 34, Dale Wansbrough 2 for 38

Beverley's fixtures for December and January are as follows:

Sunday 5th December Quairading vs Beverley Quairading
Sunday 12th December Beverley vs Brookton Beverley
Sunday 19th December Tammin vs Beverley Tammin
Saturday 29th January York vs Beverley York





wheatbelt
natural resource
management

Media Release

18 November 2021

TALKIN' SOIL HEALTH RETURNS IN 2022

One of Australia's premier soil health conferences, Talkin' Soil Health, is returning to Western Australia on 17 and 18 March 2022.

Talkin' Soil Health is one of the largest and most reputable soil health conferences in Australia. The biennial event brings together farmers, researchers and industry professionals for two days of presentations, field visits and, this year, will feature two exciting workshops on the second day. The first is a Landscape Rehydration seminar with Mulloon Institute and the second, a masterclass on taking a systems-based approach to soil resilience with Resource Consulting Services.

A key highlight of the event is the conference dinner on Thursday evening which incorporates the announcement of the 2022 regional Soil Health Champions.

The 2022 event will be held in the historic Wheatbelt town of York with the theme of "Building Resilience From The Subsoil Up". This theme is supported by the Foundation for Rural & Regional Renewal (FRRR), who is the major supporter of this year's event.

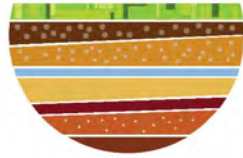
More information on Talkin' Soil Health 2022 can be found at soilhealth.com.au.

Talkin' Soil Health 2022 is supported by funding from the Foundation for Rural & Regional Renewal and the Australian Government's National Landcare Program.

ENDS -

For further comment or photo opportunities please contact:

Felicity Gilbert, Project Manager – Sustainable Industries, Wheatbelt NRM – 08 9670 3112



Talkin' Soil Health



Building Resilience From The Subsoil Up

17 and 18 March 2022, York Western Australia

Join us to hear from an exciting group of renowned guest speakers and learn from local farmers as they shine a spotlight on the latest in regenerative agriculture practices. **Tickets on sale in January 2022.**

www.soilhealth.com.au



Warriors Wellbeing Article

Primary Care - What is it? Where does it start?

Primary Care is about developing a culture of caring for each other. It's not about being an expert but being able to listen and express some empathy when someone is dealing with a difficult life issue. By de-medicalising the effect that "situational distress" can have on our mental health, it gives permission and empowers ordinary people to act and value the care they can give alongside specialised mental health services and support options.

Research shows that around 90% of suffering through traumatic experiences in our lives can be resolved by having a cuppa, a hug and a talk to a caring friend or other ordinary human being, who knows how to listen. It is worth remembering "a problem shared is a problem halved." Is this something all of us can do?

The rural climate always provides ongoing and varying challenges for farmers, agribusiness and agri-link industries, which in turn can create pressure in other areas of our personal, professional and community life.

We think the most effective care always starts from the "bottom up". Around regional WA there are numerous community champions from individuals to shires, CRCs and community groups that arrange breakfasts, sundowners and BBQ's that provide a "safe place" for people to meet, catch up and talk over life on the land.

There are many other grass-roots events that we attend which are a great basis for primary care. These gatherings can occur when people are at a crossroad in their life. People in the bush have always faced tough times, and now is no different.

The benefits of an event at the grass-roots level are many, some of which are:

- ✓ a sense of mateship and to remind you that you are not out there on your own;
- ✓ maintains important social contact to keep the body, mind and spirit in good health;
- ✓ it's blokes talking about bloke's stuff.

I would like to quote a snippet from Albert Facey's book "A Fortunate Life"

*"He wrote about his life as if it were a journey. Along his route, crossroads offered crucial choices - in some cases his survival was at stake - and the tracks he followed led to learning, pain and **enrichment.**"*

What a story, I thoroughly recommend it, it is a fantastic read for all.

The important message is this, start to talk about some of the pain in your life, don't suffer alone. Remember ...*before it all gets too much...* Talk to a Mate!! or Talk it Over 1300 789 978 Mensline Australia.

We always acknowledge the important role women play in Primary Care; they are often the conduit for men seeking help. But also remember to look after yourself first, as well as your family.

For more men's health and wellbeing information check out our website

www.regionalmenshealth.com.au, here you will find our Working with Warriors® Podcast series along with a range of other helpful articles and other support options under our "useful contacts" tab.

Owen and the Team

The Regional Men's Health Initiative
delivered by Wheatbelt Men's Health (Inc.)

PO Box 768, Northam WA 6401

Phone: 08 9690 2277

Email: menshealth@4blokes.com.au

www.regionalmenshealth.com.au





TREE & GARDEN SOCIETY

Beverley Tree & Garden Society

Following the November meeting and AGM the following positions have been filled.

President	Lyn Murphy
Vice President	Linley Thompson
Secretary	Dorothy Sampson
Treasurer	Valery Seeber
Social Secretary	Valerie Lamb

The Annual Beverley Rose Show was a great success once again with so many beautiful blooms on display. The many gorgeous quilts, tea pots and stalls added a great deal of interest too. The list of winners is shown elsewhere in this publication.

The December meeting will be replaced by our Christmas luncheon which will be at the Greenhills Inn on Thursday the 9th of December. We will meet at the Dead Finish at 11am to car pool for those wishing to participate. Please call Dorothy on 0429 989 031 if you have not yet booked a seat.

The next meeting will be on Tuesday the 1st of March and will be held at the home of Valery Seeber. Once again we can car pool, meeting at the Dead Finish at 10am.

The year is nearly over but there are still jobs to do in the garden during December before relaxing over Christmas.

Vegies to plant in December include – capsicum, eggplant, lettuce, tomato, zucchini, beetroot, celery and pumpkin.

Flowers to plant in December include – portulaca, sunflower, begonia, marigold, petunia, verbena, salvia and impatiens.

December is a great time to attend to the following tasks in the garden:

- ✓ **Protect ferns from burning sun and strong winds. Maiden Hair ferns don't like to dry out at all**
- ✓ Add mulch to outdoor potted plants to conserve water
- ✓ Watch for fungal diseases on roses and vegies. Help keep plants healthy by removing disease affected leaves
- ✓ Harvest leafy green vegies when the leaves are small and young and harvest often
- ✓ Bundle pots together for easier watering, especially if someone is looking after your garden while you are away
- ✓ When harvesting Basil, take a bit from each plant rather than stripping one. Pinch out tips to encourage lots of new growth
- ✓ Cover your worm farm with damp hessian to keep it cool and shaded
- ✓ Keep an eye on any new plantings. Nursery plants are constantly watered so you need to give new plants extra water until their root system has established
- ✓ Check irrigation systems to ensure they are all working properly, with all spray heads and drippers running freely
- ✓ Top up mulches to reduce moisture loss and moderate soil temperatures during summer. It also helps to suppress weeds
- ✓ Ripen green tomatoes by placing them on a sunny window sill

Enjoy your time in your garden in December.

Wishing you a Merry Christmas and a Happy New Year!

Community Bank · York & Districts

A better banking experience.

Right on your doorstep

We deliver the products and technology you'd expect from a big bank, plus the personal service you wouldn't.

Feel good about who you bank with. Try Bendigo.

Find out more. Call 9641 2609 or search Bendigo Bank York.

Home loans

Accounts

Credit cards

Personal loans

Business

Insurance

Financial planning

Travel and International

Investing and Super

Agribusiness



B Bendigo Bank

*All lending products are subject to the Bank's normal lending criteria. Terms, conditions, fees and charges apply and may be varied at any time. Bendigo and Adelaide Bank Limited ABN 11 068 049 178, AFSL/Australian Credit Licence 237879. A1455028 OUT_2061738 11/05/2021

WIN A \$200 KITCHEN WAREHOUSE VOUCHER

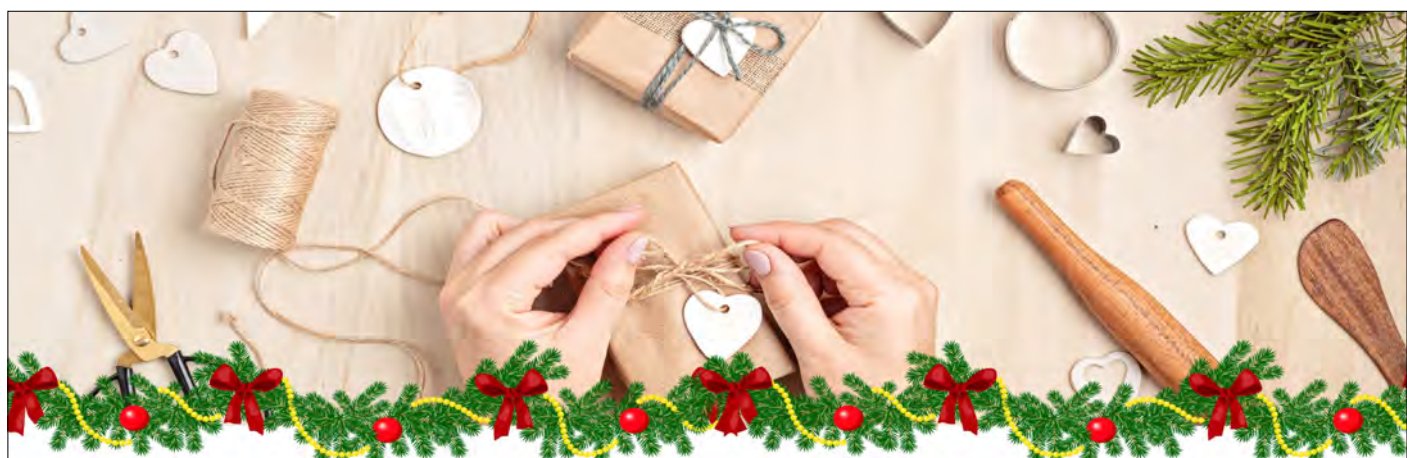


2021 CHRISTMAS CUPCAKES COOKING COMPETITION

Christmas cupcakes are always a favourite, and if you want to win our \$200 Kitchen Warehouse vouchers you must present 6 festive cupcakes on a plate (they can be all the same variety or not)!

Tough-love judges are on hand to crown the Christmas cupcake champion.

Entries must be received by 10.30am on Wednesday 15 December, early entries will be accepted. All plates must have contact information for the entrant. For more information please contact 9646 1600.



CHRISTMAS

KIDS CLAY WORKSHOP

WEDNESDAY 22 DECEMBER

Time: 10.30am - 11.30am

Venue: Cornerstone, 141 Vincent Street, Beverley

Cost: \$5 per child to cover materials

Register: Phone 9646 1600

Email: beverley@crc.net.au

Registrations are essential before Friday 17 December at 4pm.



History

Vincent Street

As part of the Heritage Trail component of the Vincent Street Streetscape Project, The Shire of Beverley is seeking photos or video footage of **Vincent Street** (from Hunt Road to the Bridge) from **ANY ERA!**



If you would like to share a photo and are happy to sign a general release form for us to use a copy of your photo or video then please contact Stefan 9646 1200 or email planner@beverley.wa.gov.au

Thank you to those who have already contributed!

BEVERLEY LIBRARY

Open Monday to Friday
9.00am to 4.30pm

KoboTraining

Learn how to download and navigate through the Overdrive App to access State Library books, magazines and audio books. Test drive our Kobo E Readers.

Book now 9646 1600 at the Beverley CRC



MONDAYS AT THE LIBRARY

Beverley WA
Be very you

The perfect venue for you...

SHIRE OF BEVERLEY

The Art Deco Beverley Town Hall is situated in the Avon Valley; a comfortable drive from Perth city. This venue offers a unique, budget-friendly option for your special day.

The Beverley Town Hall Experience...

Photo Inspiration

- ✓ Yennyning Lakes
- ✓ County Peak
- ✓ Vampire Jets (Great Southern Hwy & Larkin Street)
- ✓ Comestons Building
- ✓ James Giddy Street Art
- ✓ Station Art Gallery & Platform Theatre
- ✓ Avondale - Agricultural Machinery Museum

Investment

- ✓ \$1,000 for all inclusions as below
- ✓ 1.5 hour journey from Perth

Includes

- ✓ Three Day Access
- ✓ Tables
- ✓ Chairs
- ✓ Cutlery / Crockery
- ✓ AV System / Projector
- ✓ Commercial Kitchen
- ✓ Bar Facility
- ✓ 150+ Person Capacity
- ✓ Main Hall
- ✓ Lesser Hall
- ✓ Dressing Room



Local Suppliers

- ✓ Catering
- ✓ Photography
- ✓ Flower Arrangements
- ✓ Accommodation
- ✓ Bus Hire

Visit the
Dead Finish Museum



Oldest building in Beverley, built in 1872 as the "Wheatsheaf Inn".

Corner of Great Southern Highway and Morrison Street, Beverley WA

**10 furnished rooms of memorabilia of Beverley town and district.
Featuring the Beverley Room, a large collection of photos and history
of local organisations, school photos and identities.**

ADMISSION ADULTS \$2

CHILDREN FREE WHEN ACCOMPANIED BY AN ADULT

Open 11.00am to 3.00pm Sundays or by appointment

Mid March to November .

Closed from December to early March.

Parking available on Morrison Street. AVMCF Venue.

Contact: bhsdeadfinish@gmail.com

0427 411 881- Joy

9646 1149 - Maree

9646 1075 - Delys



Be very historic



**V8 Tractor Pulls
Ride on Mower
and
Kids Kart Races**

Photo courtesy of Vicki White



**Beverly Racecourse
Hamersley St**

2021 Season has now
finished

2022 Dates Coming
Soon

FB @tractorpulling and lawn mower racing in WA
Email tractorpullwa@gmail.com
Phone 0403 506 830

Mia DAVIES MLA

Leader of The Nationals WA

CENTRAL WHEATBELT



Northam Office
171 Fitzgerald Street
(PO Box 92)
Northam WA 6401
Ph 08 9622 2871
Fax 08 9622 1668

Merredin Office
The Old Town Hall, Mitchell St
Merredin WA 6415
Ph 08 9041 1702
Fax 08 9041 2554
Freecall 1800 673 914

mia.davies@mp.wa.gov.au
www.miadavies.com.au
MiaDaviesMLA
[facebook.com/MiaDaviesMLA](https://www.facebook.com/MiaDaviesMLA)

THE NATIONALS for Regional WA

Authorised by M.Davies, Northam Boulevard Shopping Centre, Fitzgerald Street, Northam.

Go the distance.



**No matter how far
your doctor is.**

No excuses

**See your doctor if you
notice anything different
with your body.**



For more information visit
www.findcancerearly.com.au



BEVERLEY MEDICAL PRACTICE



Providing excellent quality health care to the community of Beverley and the surrounding areas for over 30yrs
Located at the corner of John and Forrest streets (diagonally opposite the Beverley Hospital)

"Cullen House"

106 Forrest Street, PO Box 434
Beverley WA 6304
Ph: 08 9646 1241 Fax: 08 6117 0410
Email: beverleymedical@westnet.com.au



**The Beverley
Medical Practice
Bulk Bills patients
with a current
Medicare card**

OPENING HOURS
Monday to Friday
9am to 1pm & 2pm to 5pm
(Closed Sundays and Public holidays)

General Practitioners
Dr. Remi Adebayo, Dr. Olay Omoniyi,
Dr. Sola Oyetunji.

**The Beverley Medical
Practice is an AGPAL
accredited practice
and therefore is
compliant with the
RACGP 5th edition
standards of General
Practice**

Practice Nurses- Lynley, Kathleen & Marceline
BP checks, Woman's health, Pap smears, Spirometry, Vaccinations, Counselling,
My Health Record, Drivers Medicals and Health Assessments, Wound care etc.

Your friendly practice team Brookton Medical Practice now open Mon to Fri

Practice Manager - Dawn Saddleback Medical Centre 27 Whittington Street, Brookton 6306
Receptionist - Kris, Mary, Emily, and Courtney Ph: 08 9642 1485

Allied Health Services - Audiologist, Diabetes Educator, Dietician, Physio, Podiatry, Chiro, Counselling etc.

Practice News!!

Christmas holiday business hours
Christmas Eve Friday 24th - Open
Monday 27th Public Holiday - Closed
Tuesday 28th Public Holiday - Closed
Wednesday 29th - Closed
Thursday 30th - Closed
Friday 31st - Closed
Monday 3rd - Public Holiday - Closed
Returning to work Tuesday 4th January 2021



Please ensure you have enough medications to last you over the Christmas period.

The Doctors and Staff of the Beverley Medical Practice would like to wish you all a very Merry Xmas and a Safe & Happy New Year.

Roll up for WA

Beverley Medical Practice is a COVID-19 Vaccine Provider- we are currently taking appointments for both the AZ and Pfizer vaccines, if you are eligible and need your vaccination or if you are unsure and would like to discuss any concerns about the vaccination, please contact us for an appointment Phone 08 9646 1241.

R U OK?

Our trained staff are always available if you or someone you know needs support or just someone to talk too.
ruok.org.au.

Care outside normal opening hours - When the Beverley Medical Practice is closed you can always get medical attention by calling - Ready Care 1800 225 523 or Calling health direct 1800 222 222 or by attending the Beverley District Hospital, located in Sewell Street Beverley where experienced staff will triage the patient and contact the on-call Doctor

For all Emergencies call 000



BEVERLEY MENS SHED

Open every Tuesday morning 8.30am to 11.30am at the old Fire Station. Call in for a coffee, meet the members and see the great equipment for members to use. New members are always welcome. Contact Harvey Morrell for more information on 0427 235 681 or email president@beverleymenshed.com



Rock & Roll Jive Dancing

Thursday Nights @ 7.30pm

@ the Town Hall

Last Session - 9th December

\$10 per session

All Welcome

Beverley



Trading Hours Christmas 2021 & New Years 2022

Sat 25th Dec - Christmas Day - Closed
Sun 26th Dec - Boxing Day - Closed
Mon 27th Dec - Public Holiday - Closed
Tues 28th Dec - Public Holiday - Closed
Wed 29th & Thurs 30th Dec - Normal Trade
Fri 31st Dec - Open - 8.30am to 5.30pm
Sat 1st Jan 2022 - New Years Day - Closed
Sun 2nd Jan - Closed
Mon - 3rd Jan - Public Holiday - Closed
Tues 4th Jan - Resume Normal Trade



BEVERLEY EARLY YEARS GROUP PRESENTS

Storytime

Toy Library



2021 REMAINING
DATES

PLEASE NOTE THE DAY CHANGES

Thursday 21st October
Tuesday 9th November
Tuesday 7th December

FREE!

ONCE A
MONTH
@ 9-30AM

VENUE: TOWN
LIBRARY @
CORNERSTONE



FEATURING:
STORIES, SONGS, FUN!
AN INTERACTIVE 30
MINUTE SESSION FOR
BEVERLEY KIDS

All Welcome!

For more information, contact Kelly on 0428 779 234

SUNDAY 5TH DECEMBER 2021
12PM - 3PM
AT BEVERLEY SWIMMING POOL



TEDDY BEAR'S PICNIC

BRING YOUR TEDDY BEAR
PRIZES FOR BEST DRESSED BEAR
INFLATABLE ALL AGES OBSTACLE COURSE
WALTER THE WATCH AROUND WATER DOG



PICNIC HAMPERS AVAILABLE FOR \$10
SANDWICH, CUPCAKE, RAISINS, PACK OF CHIPS & JUICE BOX
STANDARD POOL ENTRY PRICES



Christmas closure

Vines Medical Practice Beverley and Brookton

will be closed -24th-28th December 2021

Opened-29th -31st December 2021

Closed -1st-3rd January 2022

Opened- from4th January 2022

*Thank you for your support throughout the year.
We wish you Merry Xmas and a happy new year.*

ANIMAL HEALTH, CHEMICALS, FENCING, FERTILISER, PET FOOD, SEED, STOCK FEED, WATER EQUIPMENT



LOT 502 DE LISLE STREET, BEVERLEY

CHRISTMAS HOURS

BARRY FRASER 0427 940 827



Locals Supporting Locals

AVON VALLEY AG CHRISTMAS HOURS 2021

Avon Valley Ag will be Closed
Friday 10th December.

Friday 24th Dec - 8am to 12pm

Saturday 25th Dec - Closed

Sunday 26th Dec - Closed

Monday 27th Dec - Closed

Tuesday 28th Dec - Closed

Wednesday 29th Dec - 8am to 5pm

Thursday 30th Dec - 8am to 5pm

Friday 31st Dec - 8am to 12pm

Saturday 1st Jan - Closed

Sunday 2nd Jan - Closed

Monday 3rd Jan - Closed

Tuesday 4th Jan - 8am to 5pm



2021 ELDERS JUNIOR TOURNAMENT



Thank you to Noel and Valda Morton of Elders Beverley for their sponsorship of the Junior Tournament, which took place on November 13th. 61 players took part, which was amazing and lovely to see so many young locals join in. The day wouldn't have been possible without parents helping to score matches and our wonderful members for all of their hard work setting up and helping to run the tournament.

RESULTS

	Winners	Runners Up
Year 3/Under Girls	Greta Gethin & Kate Growden	Charlotte Nielson & Ella Robertson
Year 3/Under Boys	Billy Farr & Hamish Tonkin	Sam Morrell & Rivers Jasper
Year 3/Under Mixed	Billy Farr & Ashlyn Higgins	Sam Morrell & Charlie Hagan
Year 5/Under Girls	Sadie Draper & Chella Emin	Abigail Bailey & Pippa Murray
Year 5/Under Boys	Burke Murray & Noah Shaw	Jake Cleveland & Noel Mathew
Year 5/Under Mixed	Archie & Greta Gethin	Charlie Growden & Chella Emin
Year 7/Under Girls	Jonti Leeson & Jianna Matres	Pippa Smith & Kayla Willmott
Year 7/Under Boys	Archie Gethin & Charlie Growden	Joel Bassett & Kobi Blechynden
Year 7/Under Mixed	Jayden & Oliver & Jianna Matres	Joel Bassett & Jonti Leeson



2021 PHOENIX SHEDS LADIES OPEN DAY

23 pairs joined in the 2021 Phoenix Sheds Ladies Open Day held on November 24th. The club looked wonderful thanks to the hard work of a small group of busy workers. Special thanks to Jane, Sandy, Glenys, Leita, Robyn, Heather & Di for running the kitchen, and to Chris Mann for the flower arrangements.



	Winners	Runners Up
A Grade 'Pull Ya Shed In'	Cathy North & Kirsten Arthur	Carissa Shaw & Alison Ashworth
A Res 'Put A Shed In It'	Gillian Longworth & June Vondeling	Kellie Podmore & Bev Young
B Grade 'Shed No Tears'	Janine Larkin & Judith Smith	Claire Cunningham & Katie Macnamara
C Grade 'Shed'll Be Right'	Tanya Marwick & Carly Veitch	Pauline Drew & Linda Thyer

Thanks also to Jane Murray & Di Gault for supporting this event and to our old mate Rob DeGruchy for making sure that the pairs that tried really hard all day (but may not have won many games!) still got their pair of socks!!

Until next year - Narelle

Anglican Parish of Beverley/Brookton

Times of Services for:

DECEMBER 2021

DATE	CHURCH LOCATION	TIME	SERVICE
Sunday, 5 th December	St. Mark's Brookton	8.30am	Prayer and Praise Advent week 2
Sunday, 5 th December	St. Mary's Beverley	9.00am	Morning Prayer
Sunday, 5 th December	St John in the Wilderness West Dale	9.00am	Morning Prayer
Sunday, 12 th December	St. Mark's Brookton	8.30am	HOLY COMMUNION Rev Philip Advent week 3
Sunday, 12 th December	St. Mary's Beverley	10.30am	HOLY COMMUNION Rev Philip
Sunday, 19 th December	St. Mark's Brookton	8.30am	Prayer and Praise Advent week 4
Sunday, 19 th December	St. Mary's Beverley	9.00am	Morning Prayer
Friday, 24 th December	St. Mary's Beverley	8.00pm	Christmas Eve Service Rev Philip
Saturday, 25 th December	St. Mark's Brookton	9.00am	Christmas Day Service Rev Philip
Sunday, 26 th December	St. Mark's Brookton	8.30am	Holy Communion Rev Philip
Sunday, 26 th December	St. Mary's Beverley	10.30am	Holy Communion Rev Philip
Sunday, 2 nd January 2022	St Mark's Brookton	8.30am	Prayer and Praise
Sunday, 2 nd January 2022	St Mary's Beverley	9.00am	Morning Prayer

for further details please call:

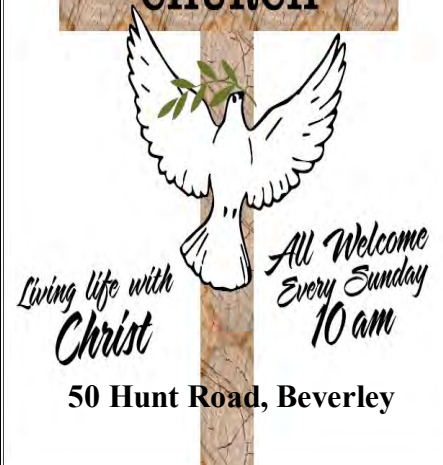
Rev Philip on mobile : 0419 177 178

All mail including St. Mary's Society please address to PO Box 292, Beverley 6304

www.beverleybrooktonanglicanparish.org

YOU ARE INVITED TO A FREE CHRISTMAS DAY LUNCH AT THE BEVERLEY TOWN HALL (Lesser Hall) on 25th December from 11.00am to 2.00pm

**BEVERLEY
REAL LIFE
CHURCH**



CATHOLIC CHURCH

Service in Beverley
8:00am every Sunday at
Beverley Sacred Heart Church
Lukin Street, Beverley



**THE RELIGIOUS
SOCIETY OF FRIENDS
(QUAKERS)**

Beverley Friends Meeting
Old Catholic School Rooms
Dempster Street

Meeting for Worship
SUNDAY at 10:30am

For more information & enquiries
phone 0408 090 345

**ROYAL ANTEDILUVIAN ORDER
OF BUFFALOES**



**GLE (Inc)
QUAIRADING BEVERLEY NO.163**

We meet the first Wednesday of
every month at the Masonic Lodge,
Hunt Road, Beverley

*The objects of our order are
Philanthropy and Good Fellowship.*

For more info contact

Tom 0419 945 240





Beverley Tree & Garden Society

2021 Rose Show Results

TREE & GARDEN SOCIETY

Section 'A' Roses

1. Rose Red	1 st Jo Sattler	2 nd Jo Sattler	
2. Rose Pink	1 st Jo Sattler	2 nd Jo Sattler	
3. Rose Yellow or Gold	1 st Jo Sattler	2 nd Jo Sattler	
4. Rose Cream or White	1 st Jo Sattler	2 nd Margie Peck	
5. Rose Bi-colour	1 st Margie Peck	2 nd Jo Sattler	3 rd Jo Sattler
6. Rose Fancy Colour	1 st Jo Sattler	2 nd Lesley Heal	
7. Peace	1 st Jo Sattler		
8. Rose Mauve	1 st Margie Peck	2 nd Lyn Murphy	
9. Rose Apricot	1 st Jo Sattler	2 nd Jo Sattler	
10. Rose Three Distinct Varieties	No Entries		
11. Three Roses in Separate Bottles – One Colour	1 st Lesley Heal		
12. 3 Roses, One Variety/ one Bud Showing Colour/One Half Open/ One in Full Bloom	1 st Theresa Hill	2 nd Theresa Hill	
13. 6 Roses – Any Variety in Separate Bottles	1 st Margie Peck	2 nd Jo Sattler	
14. Bowl or Vase of Polyanthus or Floribunda Roses	1 st Gaenor Carter	2 nd Geraldine Faithfull	
15. Vase of Any Variety Roses, Not More Than 9 Blooms	1 st Theresa Hill	2 nd Jo Sattler	
16. Vase of Full-Blown Roses	1 st Jo Sattler	2 nd Margie Peck	

Section 'B' Roses

17. Modern Arrangement With Roses Predominating	1 st Geraldine Faithfull	2 nd Lesley Heal	
18. Arrangement of Roses For Mantlepiece	1 st Lesley Heal		
19. Arrangement of Rose or Roses in an Unusual Container	1 st Geraldine Faithfull	2 nd Lesley Heal	

Section 'C' Roses

20. CHILDREN'S SECTION	21 and 22	No Entries	
------------------------	-----------	------------	--

Trophies

Champion Bowl or Vase	Gaenor Carter
Best Single Rose in Section 'A'	Jo Sattler
Best New Exhibitor	Theresa Hill
Most Outstanding Exhibit	Geraldine Faithful

A free event for everyone to enjoy! All are Welcome!

Christmas Day Lunch



25th December, 11am – 2pm

At Beverley Town Hall
Lesser Hall,
136 Vincent St, Beverley

- Door Gifts
- Games
- Carols
- Country Music
- Face painting
- Lucky Draw



This Community Event is hosted by the local Churches.

Transport available, call John at 0428129162



WANTED CUSHIONS !!

*Yes, that's right we are looking for your unwanted comfy cushions for the pews at
St Mary's Anglican Church Beverley.*

*The pews don't get any softer as the years go by, so we are putting the call out for
donations of cushions, to provide all with comfortable seating at St Mary's*

Phone Nicolette on : 041 919 4420 to arrange pick up THANK YOU

Advent and Christmas at St Mary's Church, Beverley



The Birth of Christ, He Qi

This year there will be a Christmas service on Christmas Eve at St Mary's Church, Beverley, with an 8.00 p.m. Christmas Eucharist. All are welcome at this special service.

Prior to Christmas Day there will be special services during the Season of Advent which represents the beginning of the Christian Calendar. Advent is the season observed in most Christian denominations as a time of expectant waiting and preparation for both the celebration of the Nativity of Christ at Christmas and the return of Christ at the Second Coming.

Practices associated with Advent include keeping an Advent calendar, lighting an Advent wreath, praying an Advent daily devotional, erecting a Christmas tree or a Chrismon tree, lighting a Christingle, or erecting a Nativity Scene. In St Mary's Church, a number of these will take place.

Services for Advent and Christmas at St Mary's Church, Beverley

Sunday,	28 th November	10.30 a.m.	Advent Sunday – Eucharist
Sunday,	5 th December	9.00 a.m.	Advent 2 - Morning Prayer
Wednesday,	8 th December	8.30 a.m.	Advent Communion & Bible Study– John the Baptist
Sunday,	12 th December	10.30 a.m.	Advent 3 - Eucharist
Sunday,	19 th December	9.00 a.m.	Advent 4 - Morning Prayer
Wednesday,	22 nd December	6.30 p.m.	Advent Communion & Bible Study– The Magnificat
Friday,	24 th December	8.00 p.m.	Christmas Service
Sunday,	26 th December	10.30 a.m.	Christmas I – Eucharist
Sunday,	2 nd January	9.00 a.m.	Christmas 2 – Morning Prayer



Advent Wreath



Beverley Historical Society - Presidents Report 2021

In October after the 2020 AGM we had a visit from the Year 2 class. A day we always enjoy especially when they send us a booklet of their time with us here, organised by their teacher. Thank-you for that. This year (2021) they had

a change in their programme and they came in March. Thank-you to all who came to help by cooking and helping on the day and to Ted and Sheila for supplying the pennies. We had a few helpers from outside our committee, many thanks to them for helping with the Year 2 day, both last year and this year. In November we took possession of a 4-drawer filing cabinet with a 2-hour fire rating. Mark Petchell and Pip Smith helped Glenys and I along with Perry Ugle (last minute helper) position it in the office room. Through the year we have organised and sorted photos etc into the new cabinet in better order, with acid free paper protecting our valuable history. The cabinet was purchased with Shire of Beverley grant money.

Late in November we had a lovely Christmas party to wrap up our 2020 year of work and celebrate our achievements. The White Gum Farm Restaurant was a lovely experience and a great choice. Thanks to Glenys for suggesting it and following up with bookings.

After a clean-up in March, we opened for visitors with Covid 19 requirements set in place.

Both our suggestions for an excursion this year were put on hold. Brookton House owners (a farm owned by one of our early Roads Board Chairman) were not ready for a visit, and a trip to St Peter's Church was put off due to excessive wet conditions in the area and on the road in.

Glenys Petchell and I have been working with other members of the community on the 2022 celebrations for 150 years of the Roads Board/ Shire and 150 years of the Dead Finish building. Celebrations to be September 2022.

Thanks to Di Smith and Morag Whitney for getting a grant application prepared, with success, for a Digital Programme and related equipment. Thanks to Di for all her research, ordering and taking possession of the equipment. This was also a Shire of Beverley grant.

During the year the Shire were approached by us to do some work on the Museum and after a visit by all the councillors and our committee, they have decided to do some upgrade and maintenance. Thank you for their consideration for our oldest building in town and to Danny the Shire maintenance officer for his great work. Thankyou also to the Shire for upgrading our fire alarms.

Thanks to Adam for doing in house maintenance and both Adam and Leonie our younger members for some great cleaning and re-organising the storeroom etc., also Leonie for organising and updating our photo display books.

Thanks to the committee members who helped with the Show display. This year we combined with the Garden Club and the display was fabulous. Also thanks to Lynn Murphy for donating a wonderful picture of the Dead Finish Museum to us, from her collection.

A big part of our work here is research for people seeking the Historical Societies' help to find information about family etc. This is ongoing and very ably done in the most part by Morag. However we are all involved in the research department in one way or another. Thank you for your input. Thanks to Glenys for her work putting information and enquiries into the Blarney every month.

We have received great donations this year as always from near and far, all relating back to Beverley's past. Thank-you to the donors.

We have had good visitor numbers this year, not interrupted too much by Covid, with many being WA people travelling in WA. We have had groups from Northam and Perth, throughout the year and some caravan groups to name a few. All in all we had 195 people through our Museum doors since our last AGM. Thank-you so much to all our members who have done duty every month.

Thanks to Bill Whitney for auditing our books for the AGM and thanks to Don Davis for sitting in for the election of office bearers.

In conclusion I thank sincerely our office bearers who have most ably done their jobs, and committee members who have attended meetings and worked all year, in various ways. I find it encouraging that we have had new members come along this year to add to our usuals in dedication to our town and its history.

Joy Smith (President)



Can You Help with names of any of these students?



Presentation Convent perhaps 1920s or 1930s



Beverley State School about 1959, Charles Goodrich is the seated teacher

Beverley Bowling Club News

Pennant News

The 2021/2022 Bowls pennant season for both Men and Women commenced in October. Ladies Pennants. The Ladies are competing in a 12 Team Avon Valley Bowls League Competition which commenced on October 12. Results so far.

Round 1 Beverley 3 defeated Quairading Red 1

Round 2 Beverley 0 defeated by York 4

Round 3 Washout over entire competition due rain and storms

Round 4 Beverley 3 defeated Quairading White 1

Round 5 Northam 0 defeated by Beverley 4

The Beverley Ladies team currently sit 5th on the Ladder on 12 points only 3 points behind Ladder leaders York on 15pts. All teams received 2 points for the washout.

Mens Pennants Commenced on October 9 for both 1st and 2nd Division

Mens 1st Division are competing in an 8 Team Division. Results so far.

Round 1 Beverley 1 defeated by York 7

Round 2 Dowerin 7.5 defeated Beverley 0.5

Round 3 Meckering 2 defeated by Beverley 6

Round 4 Beverley 8 defeated Toodyay 0

Round 5 Bolgart 1.5 defeated by Beverley 6.5

Round 6 Beverley 7 defeated Goomalling 1

Beverley 1st Division Men sit in 2nd spot on 29 points behind the unbeaten Northam Team. These top two teams go head-to-head at the Beverley Bowling Club in round 7.

2nd Division are playing in a 5 Team Competition. Results so far

Round 1 Dowerin 0 defeated by Beverley 8

Round 2 Beverley 6 defeated Northam 2

Round 3 Bye

Round 4 York 7 defeated Beverley 1

Round 5 Goomalling 7 defeated Beverley 1

Round 6 Bye

The 2nd Division team is currently 4th on the ladder.

Club News

During October the IGA Mens Championship Fours was played with the winning team being that of Geoff Bremner, Mark Petchell, Dave Overington and Kevin Mclean. Many thanks to our Sponsor IGA for continuing to support our club.

The President and Committee wish everyone a Merry Christmas and Happy New Year.



Champion Fours team from left to right Geoff Bremner, Mark Petchell, Dave Overington and Kevin McLean with IGA sponsor Chris Pepper centre.



ST JOHN AMBULANCE - BEVERLEY SUB CENTRE

The new Corpuls's have been fitted into both of our Ambulances. This equipment replaces what we know as the FR3 which is used to monitor the heart. We have had a number of sessions, making us all familiar with this new piece of vital equipment.

With then end of the year looming fast, our Training for 2021, has been completed for all our Crews.

The renovation to our Sub Centre are going along at a steady pace. Hopefully by the new year it will all be complete and we will be onto the next project.

The Sub Centre is still after copies of photos relevant to Beverley Sub Centre, if you could look through your photos, you may have a few that we could have copies made, it would be appreciated. We have the albums all ready to put them in but few photos.

On Remembrance Day the Sub Centre placed roses at the War Memorial.

Great News:-

Royal Flying Doctor Service, will have two helicopters join the RFDS Fleet at the end of 2021. This will be the RFDS' first dedicated aeromedical helicopter service and crewed by RFDS' experienced and trusted team of specialist pilots, doctors and flight nurses.

The helicopters will be used for door-to-door aeromedical retrievals from regional hospitals to specialist care at Perth's major tertiary hospitals.

The assets provide us with greater capacity to assist the State when it needs us most.

Let's hope we don't see much of them in our town.



Beverley Sub Centre, Committee & Crew,
take this opportunity to wish everyone a Very Happy
Christmas & a Safe New Year.



FROM THE LADIES AT BEVERLEY CWA

**THANKYOU FOR ALL YOUR SUPPORT THAT YOU HAVE
GIVEN US IN 2021.**

November has been a busy month for the tennis club with junior coaching and tournaments plus the Ladies Open Day, Lew and Sandy Shaw Handicap Mixed Doubles, Mixed Doubles Championships and the Mid-Week Ladies Competition. Thank you to all the members, sponsors and volunteers who make these days possible.

Lew and Sandy Shaw Trophy

This year the event was handicap doubles and everyone enjoyed a day of fabulous tennis in great conditions. Congratulations to the winners, Keith Murray & Jarryd Morton along with Ali Edwards & Chris Brooke.

Thank you to our wonderful sponsors Lew & Sandy for another great day and to the 18 pairs who took part. Special mention to Sandy for providing the sundowner catering that was enjoyed by all.



Championship Mixed Doubles

10 pairs took part in a round robin competition. The weather was slightly trying with high winds, thunder, lightning and the odd shower but eventually the final was played out between Brett & Carissa Shaw v Marc & Ali Edwards. The winners were Brett & Carissa who played consistently together all day. Thank you to our valued sponsors Paul and Deb Roediger for supporting all our championship events.

Memberships

While nearly everyone has registered, just a quick reminder that memberships are completed online this year. Please use this link <https://play.tennis.com.au/beverleylawntennisclub> and follow the prompts for membership and registration. If you are registering a family, there is the option to add additional members after the first registration is completed.

Merry Christmas!

December will see the wrap up of coaching and the ladies mid-week competition. Sunday's will be social tennis and we look forward to seeing everyone in their festive outfits on the 19th December to celebrate Christmas and making it to the end of the year. Best wishes to our members who are busy harvesting, we look forward to seeing you back soon.

See you on the courts!

DAY	DATE	NOVEMBER FIXTURE	COMMENT
WED	1st Dec	Mid-Week Ladies Tennis	Week 6 - Final
SUN	5 th Dec	Sunday Social Tennis	
SUN	12 th Dec	Sunday Social Tennis	
SUN	19 th Dec	Christmas Wind Up – Christmas best dressed award	BBQ dinner Bring a salad to share

Station News

The Station Garden is available for public use at any time; just open the gates and enjoy!

COVID-19:

Please practice good hygiene and physical distancing at all our events, and use the hand sanitiser stations provided. If you are feeling unwell or have travelled outside WA in the 14 days prior to events, please do not attend.



Community Christmas Party

Yes, it's that time of year again when Christmas is foremost on our minds and what better way to relax and share some Christmas cheer than to be at the Station for the Community Concert on **Saturday 18 December**. This year the Shire has again contributed towards entertainment for our free Family Christmas Concert when the whole of town and surrounds come together for some fun.

The evening begins at **5.30pm** when the popular Zap Circus duo work with the children on some fun circus skills; then at **6.15pm** we anticipate a visit from Santa, and come **7.30pm** you will be thoroughly entertained by the **Purple People Comedy and Circus Show!**



To complete the evening's entertainment at **8.15pm** when darkness falls, we will celebrate the true spirit of Christmas with **Carols by Candlelight**. This year Mark Kont will be playing keyboard to the harmonies of a group of locals who have volunteered their time to a few sessions of practice. Thank you Mark for your patience during these weeks!

Sounds like a great evening, doesn't it? Don't forget that as it's a free event you can come and go to buy food from the cafe and pubs, or bring your own picnic baskets and drinks. There will be no bar or food available at this event.



Artists-in-Residence at the Station

Artists in Residence during November 2021

We had three artists arriving at different times during November:

1-14 Nov we welcomed **Kelsey Diamond** whose Art and Craft Morning Tea on Sunday 14 was a lot of fun by the few who attended.

15 – 22 Nov we had **Annis Woods** whose workshop was a success with new faces learning the art of pastel painting.

24 – 30 Nov we welcome back **Thelma Cluning** and we're looking forward to the exhibition at the end of her stay.



Above and below: Having fun at Annis's workshop



Artists-in-Residence for December 2021

1- 14 Dec Julie Parsons and Peter Clarke

15 – 31 Peter Ptschelinzew and Anne

JULIE PARSONS (1 -14 Dec)

Julie is an inter-disciplinarian whose former arts practice in public art and the visual arts crossed into design for performance and finally writing, where she has been able to apply her imaginings and strong exploitative research skills.

In 2009, Julie's focus on art, history, and performance led to a *MA in Creative Arts* at The *Western Australian Academy of Performing Arts*. The work explores the Australian designer's perspective of the history of the Harlequin costume.



Now a writer based in Fremantle W.A., since 2013, she has regularly written articles for the Sydney based arts journal *Oz Arts*.

Along the way Illustration work has been a constant with commissions in costume and set design, illustrations for books, programmes, catalogues etc as well as painted images used as projections in performance.

In 2018, Julie authored and illustrated the family history book "Rabbits and other Immigrants" a 300-page self-published work, about her wheat belt heritage.

Julie's achievements in visual arts are cited in arts publications such as "Artlink", "Craftswest", "A Dictionary of Women Artists in Australia", "Who's Who of Australian Visual Artists" & a "Spirited Place".

Julie will be writing during her residency but will be available to discuss ideas about approaches to family history research and writing.

PETER CLARK 1-14 Dec

Throughout Peter's career as a Primary School teacher, he attempted to keep his art practises alive through creative output with children in a school context. He continually promoted an



appreciation of visual arts history and creative thinking in the use of art production techniques and processes.

To further encourage appreciation of the arts, he arranged school excursions to local galleries and workshops for the students. He has been involved in the organisation of school-based arts days, which included music, visual arts and performing arts activities. Many of these involved production and installation of permanent display on school grounds.

As well as general classroom activities and onsite school displays, he coordinated and assisted in the organisation of public displays in shopping centres, libraries, community halls and other appropriate local venues. These were stand-alone exhibitions or complimentary to other identified public events.

In order to develop his own skills and adapt these to classroom situations, he has attended numerous workshops run by the WA Education Department in both Perth metropolitan and South West regional venues.

Please keep an eye on the weekly Bulletin for further information regarding residencies, workshops or any changes to schedule - or contact AiR Coordinator Marylou on 0427085511 or email: residency@beverleystationarts.com

PETER P (PTSCdHELINZEW) AND ANNE (1 - 14 Dec)

You may recall Peter P and Anne being here in December last year when Peter delighted in taking photos of harvest.



Artists-in-Residence for 2022

JANUARY: Tracey McDonald
MARCH: Mutsuko Bonnardeaux 1st - 15th
Roslyn Newick
APRIL: Michele Scott
MAY: Irene Osborne
JUNE:: Anne McCallum
JULY: Lorraine Pichugin 1st - 12th
Tich Dixon 15th - August 10th
AUGUST: Tich Dixon 15th July - 10th
Steph Boyle 11th - 31st
SEPTEMBER: Thelma Cluning
OCTOBER: Trish Davis 1st - 16th
Natalie Blom 17th - 23rd
NOVEMBER: John Kaye
DECEMBER: Adrianna Wasinska-fabian 1st - 14th
Kelsey Diamond 15th - 31st

Station Gallery Open Hours:

11.00am – 3.00pm

Thursday, Friday, Saturday and Sunday



Beverley Station Singers

Singing practice on Wednesday November 10 prepared us for the Dunsborough Songfest November 12 – 14 which was a hugely successful event with 30 choirs performing from all over the state.

Following our Christmas get together on Wednesday December 8, Station Singers will have a break over the holiday season but will be back in force come February. They will continue to meet on a Wednesday every 3 weeks either in the Station Gallery or in the greenroom. Singing is directed by the talented Kelly Newton Wordsworth; cost \$20 per night. Sarah Miller is coordinating singing so if you are keen to come along and sing your heart out you can phone 0427464078. New singers always welcome.



Beverley Amateur Dramatics (BAD)

Keep an eye out for when the BAD group advertise very soon for auditions for their next musical in March 2022. If you would like to be involved in future productions (backstage and onstage), please email Britt Hadlow beverleyamateurdramatics@gmail.com to be put on the mailing list.



Performing Arts

Landslide Fleetwood Mac/Eagles tribute

Landslide, weren't they fantastic?! And what a great crowd they pulled – 350! A number we haven't seen at the Platform Theatre for some years. Needless to say, we made a profit of which will be put towards stage lighting. Some pics of the night follow:



COMMUNITY CHRISTMAS PARTY!



Saturday 18th December 5.30pm



Beverly Platform Theatre



Gates open 5.00pm



Cost: FREE



BYO PICNIC AND DRINKS (**NO** Bar or Kiosk)



Programs and candles will be available for a gold coin donation



5.30pm: Circus FUNDamentals workshop



6.15pm: **Santa** and his **Pony** friends arrive



7.30pm: The Main Event – **ZAP CIRCUS – Purple People Comedy and Circus Show**



8.15pm: **Carols by Candlelight**



Volunteer Thank You

- to James for the many hours weeding the Station lawn
- to Mark Kont for his perseverance in getting some harmony into this year's Christmas Carols

by Jenny Broun, President Beverley Station Arts



Merry Christmas from Beverley Horse and Pony Club



Presentation and Wind Up: On Sunday the 21st November the club had its presentation and wind up.



Club Person of the Year: Tealah Hawke

Perpetual Trophy donated by Drumclyer Stud

Most Improved Senior Showjumper: Trinity Matthews

Perpetual Trophy donated by Marie Hammond

Most Improved Junior Showjumper: Mia Farr

Perpetual Trophy donated by Marie Hammond

Best Presented: Winner: Mia Farr

Perpetual Trophy donated by Hawke Family

Second: Tealah Hawke

Third: Emily Maxwell



Out and about:

State Eventing Championships: On the 23 & 24 October at Murray Horse and Pony Club, Carley Ballantyne represented our club and Zone in the 80cm and placed 15th, which is a fantastic achievement.

Serpentine ODE: On the 6 & 7 November, Carly Ballantyne competed in her first 95cm event. She nearly completed all phases but unfortunately had an error on the Cross Country course.



Swan Valley Tetrathlon & Hunter Trials: On the 14th November Emily Maxwell placed 2nd in the 13yrs and over 80cm Tetrathlon and 7th in the Hunter Trials open. Jessica Maxwell placed 3rd in the 13yrs and over 65cm Tetrathlon and 5th in the Hunter Trials under 14.3h.



Beverley (West Aust) Horse And Pony Club Events



beverleyhorseandponyclub

President: Lisa Maxwell
Secretary: Tess Hawke
Treasurer: Di Ballantyne
Coach Co-ordinator: Jessamin Pain

2021 Committee contacts:

E l.a.maxwell6@gmail.com M 0408 902 701
E keely@westnet.com.au M 0419 879 310
E ballantyne@bordnet.com.au M 042 7777 764
E bevpc.coaching@gmail.com M 044 7722 958

2021 Upcoming dates and events ...

12th December

Beverley Horse and Pony Club AGM

@ Beverley HPC Club House @ 9am



EVENTS 2021

EVENT	DATE
Kindy/ Pre Primary Christmas Concert	02 December
Community Markets	04 December
Teddy Bears Picnic	05 December
Year 6 and Year 10 Graduation	13 December
Beverley District High School Presentation Night	15 December
Beverley District High School Last Day of School	16 December
Community Christmas Party	18 December
Kids Christmas Craft @ CRC	22 December
	2022
Spring Back to Beverley	24 - 25 September

The flag was flown at half-mast on the Beverley Town Hall as a mark of respect to:-

- Brian Leslie Beddall
- James Nicholas Broun (Nick)
- Denis William Falkingham
- Phillip Hubert Smith
- David Donald Thompson (Casper)

Emergency Medical Information Book

This useful book contains all a person's information and medicals record needed if, or when, an ambulance is called, and they need to be transported to a hospital. The Emergency Medical Information Book Available for a \$2 donation at Beverley Farm Services.

Support your local groups

BEVERLEY BLARNEY

900 copies each month

Community notices are free of charge

The deadline for the next

Beverley Blarney is 4pm

Tuesday 14 December 2021

Contact our friendly Shire staff today

Shire of Beverley

PO Box 20 Beverley WA 6304

Phone: 9646 1200

Email: blarney@beverley.wa.gov.au

Online editions: beverley.wa.gov.au

DISCLAIMER

The information in this publication is of a general nature as a service to the ratepayer. The articles included herein are not intended to provide a complete discussion of each subject. While the information is believed to be correct, no responsibility is accepted for its accuracy. No liability is accepted for any statements of opinion or any error or omission.

Do you want to advertise in the
Beverley Blarney?

Advertising Rates

As at 1 November 2021

Monthly Advertising

Full Page	185 x 268mm	\$182
Half Page	185 x 133mm	\$96
Quarter Page	92 x 133mm	\$47
Eighth Page	60 x 87mm	\$29
Trade Advert	60 x 45mm	\$8

Annual Advertising

Full Page	185 x 268mm	\$1,820
Half Page	185 x 133mm	\$960
Quarter Page	92 x 133mm	\$470
Eighth Page	60 x 87mm	\$290

Electronic format is preferable:

With a .doc (Word Document), .pdf (Adobe), .png or .jpeg extension



December 2021



SUNDAY	MONDAY	TUESDAY	WEDNESDAY	THURSDAY	FRIDAY	SATURDAY
			1 Golf Scroungers Active Farmers Croquet Ladies Tennis	2 Badminton Line Dancing Rock n Roll/ Jive Dancing Kindy/PP Christmas Concert	3 Op Shop Croquet Swim Club	4 SAMBA Op Shop Community Markets
5 Social Tennis Teddy Bear's Picnic @ Pool	6 Weight Watchers Yarns & Yarns Bridge Swim Club	7 Stay Active Quilting Storytime/ Toy Library	8 Golf Scroungers Active Farmers Croquet Station Singers <i>Council Nominations for Extraordinary Election Open</i>	9 Line Dancing Rock n Roll/ Jive Dancing	10 Recycle Bin Op Shop Golf Scroungers Croquet Swim Club	11 SAMBA
12 Clay Target Club Social Tennis BHPC AGM Cricket in Beverley	13 Weight Watchers Yarns & Yarns Bridge Swim Club Yr. 6 & Yr. 10 Graduation	14 Mens Shed Stay Active Quilting BLARNEY DEADLINE COUNCIL MEETING	15 Golf Scroungers Active Farmers Croquet BDHS Presentation Night <i>Council Nominations for Extraordinary Election Close</i>	16 Line Dancing Playgroup Last Day of School	17 Op Shop Golf Scroungers Croquet	18 SAMBA Community Christmas Party
19 BHPC Windup Tennis Club Windup	20 Weight Watchers Yarns & Yarns Bridge	21 Mens Shed Quilting	22 Golf Scroungers Active Farmers Croquet Christmas Crafts @ CRC	23	24 Recycle Bin Golf Scroungers Croquet	25 CHRISTMAS DAY Free Christmas Lunch @ Lesser Hall
26 BOXING DAY	27 PUBLIC HOLIDAY	28 PUBLIC HOLIDAY Mens Shed Quilting	29 Golf Scroungers Active Farmers Croquet	30	31 New Years Eve Happy New Year!	