



# BEVERLEY BLARNEY

Edition 449 March 2022 No Charge



Proudly Supported by our Major Sponsors

**BEVERLEY**  
*Transport*



4 DAYS OF ROUND ROBIN MATCHES

BEVERLEY LAWN TENNIS CLUB INVITES YOU TO ENTER

## 88TH ANNUAL EASTER TENNIS TOURNAMENT

PLAY COMMENCES GOOD FRIDAY 15TH &  
ENDS EASTER MONDAY 18TH APRIL.



**Online Entries Now Open!**

[play.tennis.com.au/beverleylawntennisclub/Easter/EasterEntries](http://play.tennis.com.au/beverleylawntennisclub/Easter/EasterEntries)

**Entries Close - April 8th 2022**

**Enquires to Chantelle Meade 0429 418 576**

**or [entries@beverleytennisclub.com](mailto:entries@beverleytennisclub.com)**





### *Vincent Street Streetscape Project*

This report has been written and rewritten on this project as we are learning that the multiple issues encountered, particularly over the past few weeks, have necessitated changes to the Plan. At the Council meeting on the 22nd February, Council was presented with significant changes that, in the term of the project, will very likely reduce the timeframe for completion. Previous changes and delays had seen the completion date stretch out to early August 2022 and it is now hoped to bring this back to possibly the end of June. I am fully aware that such uncertainty does not give comfort to the community but Council's priorities are, to complete this project to the standard that has been set at the outset without compromising anything and ensuring the final cost is within budget.

This project is probably the biggest project undertaken by the Shire in many years. Unlike similar projects, namely; the Recreation Centre, the Cornerstone, and the Skate Park, this one impacts directly on you, the Community. Preparation for this project was as detailed and thorough as possible through the consultant GHD. Soil tests were carried out to provide the tenderers with as much information of the quality of the soil under the road as well as location of all known utility services. As well prepared as it was, these projects rarely proceed as smoothly as planned. In this case there have been a number of issues that have arisen for which no planning could have anticipated. Things such as below ground services not identified in our enquiries. The main concern as of writing, was the surface of the road and best manner of resurfacing it, within budget.

A number of options have been under consideration to complete this task as quickly as possible but each has a cost which could affect the final cost of the project. As stated earlier, Council's concern is to hold as closely to the budget as possible while expediting the task. The profiling was completed by 22nd February and reconstructing of the Street will commence as soon as possible. Hopefully in the first week of March.

It was planned to complete the reconstructing of Vincent Street in two stages by concentrating on half of the Street at a time. For each of these stages, it was envisaged closing that part of the Street for a minimum of three weeks. Six weeks in all. The plan now is to close the whole street for a period of up to four weeks. Further information will be provided by the Working Group at the Shire as plans are finalised for accommodating the community in respect of shopping. It will be a significant disruption but the end result will be that the total time of closure will be less, but more importantly, there may be a cost and time saving on the project. I would like to conclude here by acknowledging the Working Group led by Stefan de Beer for whom there are many hours of angst.

### *Annual Report*

The Council has now formally adopted the 2020/2021 Annual Report and received an unqualified Audit Report from the Office of Auditor General. Further, the Office of Auditor General has given the Council an assurance that everything possible will be done this year to ensure the Annual Report for 2021/2022 will be delivered by the end of November 2022 at the latest.

### *Annual Electors Meeting and Avon River Park Concept Plan*

The Annual Electors meeting to adopt the 2020/2021 Annual Report will be held on Tuesday 5 April 2022 at 10am. Following the meeting will be a community presentation of the Avon River Concept Plan. Shovel ready plans are required to apply for future funding (when all current large projects are completed).

The Shire has combined the two events in hope to attract more community members as history has shown very low numbers attending the evening Annual Electors Meeting.

### *Citizenship*

Congratulations to our newest local Australian Abi Robinson who was welcomed as a New Aussie at her Citizenship Ceremony on Tuesday 22 February 2022.

### *Community Grants*

A large number of applications to the second round of Community Grants were received and subsequently, the available funding was oversubscribed. Congratulations to the groups who were successful.

*Cr David White*  
*Shire President*



# For Lease Office Three @ Cornerstone

Please contact the Shire Office for  
leasing and viewing information.  
9646 1200 or  
[admin@beverley.wa.gov.au](mailto:admin@beverley.wa.gov.au)

Excellent location  
and modern facilities

Available from 29 November 2021



## Beverley Landfill Site Opening Hours

Saturday

8.00am – 4.00pm

Sunday

8.00am – 4.00pm

Monday\*\*

8.00am – 3.30pm

**\*\*Please Note:**

**EARLIER CLOSING TIME**

**CLOSED Christmas Day  
and Total Harvest Ban Days**

## BEVERLEY SUB CENTRE NEWS



Do you have a query about your Benefit Fund renewal or a St John invoice that you have received?

If so, you are welcome to come to the sub centre on John Street. We ask that you use the front entrance of the building and use the SafeWA app to scan the QR code. If required, we have a paper register available.

Our office is usually open on Tuesdays and Fridays from 9.00am - 2.00pm. However, there may be occasions when the office is unattended during these times. To assist you in knowing whether or not we are open, our St John banners are now always placed outside the front of the sub centre when we are open.

Alternatively, we can be contacted by email, [beverley.subcentre@stjohnwa.com.au](mailto:beverley.subcentre@stjohnwa.com.au), or phone 9646 1408.

St John WA - Beverley looks forward to assisting you with any enquiry you may have.

# **BEVERLEY ART PRIZE**

and

## **53<sup>rd</sup> ANNUAL EASTER ART EXHIBITION**

**Overall Winner \$5,000 plus over \$8000 across other sections to be won.**

**ENTRIES CLOSE 18 MARCH 2022**

**Enter online at [www.beverleystationarts.com](http://www.beverleystationarts.com)**



### **OFFICIAL EXHIBITION OPENING**

**Thursday 14 April 7pm-9pm, Beverley Town Hall**

**Other Opening Times: Preview only (no sales) Thurs 14 April 10am-4pm,  
Fri 14 April to Sun 17 April 10am-4pm, Monday 18 April 10am-2pm.**

**Major Sponsor: Shire of Beverley**

**Proof of vaccination will be required  
to enter the Town Hall.**

**Artwork: 2021 Overall Winner "Treehouse by the Sea 1" by Elmari Steyn**





# MAKEUP WORKSHOP

with  
*Courtney Hooper*  
**HOOPER ARTISTRY**

**WEDNESDAY 13 APRIL 22**  
**10AM TO 3PM**

*Limited Tickets*  
\$40 PER PERSON (13Y+)  
INCLUDES TUITION + LUNCH  
+ BEAUTY MIRROR



**KILLER BROWS  
DRAMATIC EYES  
CONTOURING  
DAY TO NIGHT LOOK**

Beverley CRC 08 9646 1600 141 Vincent Street Beverley



# FRIDAY BINGO

Beverley Cornerstone - 141 Vincent Street  
Friday 25 March 2022  
Eyes down 1pm - Finishing 3pm  
Afternoon tea available  
For more information contact Sam 9646 1600




**BEVERLEY**  
AGRICULTURAL SOCIETY INC.

*Would you like to join us and make a difference in your local community?*

**We are looking for a range of volunteers to join us in preparation for the Beverley Agricultural Show.**

**We rely heavily on volunteers to help coordinate all aspects of the Beverley Agricultural Show.**

Contact the Sue Martin, our Secretary, on the below details:  
beverleyagsociety@gmail.com or 0427 771 054




**BEVERLEY**  
AGRICULTURAL SOCIETY INC.

*Does your Community Group need Fundraising Opportunities?*

**Is your Community Group interested in being involved (fundraising opportunities) in the Beverley Agricultural Show?**

Contact the Sue Martin, our Secretary, on the below details:  
beverleyagsociety@gmail.com or 0427 771 054

**to be added to our Community Group Register to be notified of any opportunities that arise.**





---

# Beverley Ag Museum News

Firstly, a big thank you to all the volunteers, (and the public interest for our Busy Bee held on February 19), whose efforts certainly indicated their dedication towards the upkeep and maintenance of the Beverley Shire Agricultural collection considering all our activities were confined to outside gardening chores in the sun and not tinkering mechanically, our usual forte.

Many thanks go to the Beverley Shire for supplying the food for our Bar Be Que and the much-needed bottled water and cool drinks, consumption was obvious by the number of recyclable containers gathered afterwards.

Thanks also go to both Robyn (the new NT Warden) for organising the Covid necessary required recording and hand sanitizer, and where would we be without our long serving member John Hawke and his trusty Trailer negotiating the piles of garden waste before transferring it to the NT recycling pile.

It was a fantastic team effort from all our volunteers, raking and weeding often in hard-to-get to places in between the outside exhibits, so thank you Bob, John H, Luke, Paul, and Peter for your efforts and Robyn for your additional pruning skills.

Although Moo (our resident Emu) was not around to assist, new member 'Taz' (Robyn & Peter's dog) made an affectionate appearance but was ushered away long before the sausages were cooking.

Three of the wives joined the workers at lunch time to try and understand what motivates our interest in 'old stuff', (mine already does) both were impressed (as most visitors are) with the Beverley Shires collection. Before their arrival one of the guys requested, he not be seen by his wife with a rake in his hand or she might think he was interested in gardening haha.

Our group usually meets at the Avondale Farm every 3<sup>rd</sup> Saturday of the month from February until November, if you would like further information, please feel free to call John on 9646 0768 or email [Pat.John.inoz@bigpond.com](mailto:Pat.John.inoz@bigpond.com)

John Alexander.





## Beverley RSL Sub Branch

### ANZAC Day

There will be a Commemorative Service at the Memorial,  
commencing at 0600hrs.

Please be in attendance by 0550am.

Members of the public are welcome to lay a wreath or flowers.

Following the Service there will be the Gunfire Breakfast at the RSL Hall,  
50 Forrest St, Beverley.

All welcome

For all enquiries and further info, please contact the President on  
0424 361 043

# GROW A BUMPER CROP WITHOUT BREAKING THE BANK

## Your fertiliser dollar buys more at Whitfert

If you're looking for real economies of scale on farm, go with Whitfert's range of proven, quality fertilisers that don't cost the earth. Improve your yield potential without breaking the bank.

**Go with Whitfert**

CALL: 1800 654 089  
[www.whitfert.com.au](http://www.whitfert.com.au)







## Common or not?: Borers



From left to right: common wood boring species; native longicorn beetle, native larger auger beetle and elephant weevil.

### Borers are a hot topic

The onset of hotter weather has drawn many borer species out of the woodwork, and enquiries and photos are coming in thick and fast. Photos of insects, entry/exit holes, information about the species of tree or wood and the signs/symptoms being seen, all help us to identify what is common and what is not.

Ecologically, borers have a role to play, and their tunnels and holes left in trunks and branches make homes or hiding spots for other species. Some native borers make holes the perfect size for native bees to nest in. However, it's their damage to plants and trees, as well as timber and wooden products that make them largely unpopular, and destructive.

There is an abundance of native and established borer species in WA, but concerningly, there are many highly destructive borer species globally. The introduction of these borers into new parts of the globe can devastate streetscapes, forest ecosystems and horticultural industries, not to mention some species' impacts on timber and wood products. So, with the detection of borer activity more likely in these hotter months when borers are most active, keep your eyes peeled, and report!

### New symptoms, new detection

When a dying branch fell from a backyard Maple tree, the discerning eye of an East Fremantle

resident thought something looked amiss and reported the borer damage via the MyPestGuide™ Reporter app. The result? Our department is now responding to a new incursion of the exotic Polyphagous shot-hole borer (PSHB), *Euwallacea fornicatus*, and operations are working hard to contain and delineate the extent of this pest. For more information, see: [agric.wa.gov.au/borer](http://agric.wa.gov.au/borer).

Public reporting of borer signs and symptoms are encouraged as surveillance ramps up to detect the extent of the Polyphagous shot-hole borer, and the trees affected.

### Reporting

We can't all be insect identification specialists, and it's hard to know what's common and what's not, but if something isn't common or familiar to you, please report it. Make reports particularly valuable by including as much information as possible about the signs and symptoms you are seeing. Collect and hold onto samples of suspect insects whilst awaiting identification, and if taking photos, include things like a ruler or a pen in the photos so the dimensions of things can be gauged.

If borers are coming out of furniture, timber, wooden platters, bowls, or ornaments – report it, and we'll provide identification services and guidance from there.

## Report suspect pests



MyPestGuide™ Reporter  
via app or online  
[mypestguide.agric.wa.gov.au](http://mypestguide.agric.wa.gov.au)



Pest and Disease Information Service  
(08) 9368 3080  
[padis@dpird.wa.gov.au](mailto:padis@dpird.wa.gov.au)



# BEVERLEY STATION ARTS

Perth Symphony Orchestra is swapping city for country  
in a night under the stars at the Platform Theatre.

Saturday 02 April 2022



Performing Mozart to  
Led Zeppelin and  
everything in between!

PERTH SYMPHONY ORCHESTRA PERFORMS

# S·T·R·I·N·G·S

## A QUARTET GONE ROGUE

Gates open 6:30pm, starts 7:30pm.

Tickets \$35, concession \$30

Book tickets: Beverley CRC

[beverleystationarts.com](http://beverleystationarts.com)

[trybooking.com/BXAXD](http://trybooking.com/BXAXD)



BYO Drinks  
Food catered

**Hosted & Songs by Penny Shaw from Divalicious!**



# Thankyou to our Volunteer Firefighters

On Sunday 6th February on a day of Catastrophic Fire Danger conditions the Beverley South East Bush Fire Brigade were turned out to respond to a bushfire that had started at Wamenusking in the Shire of Quairading approximately 60 km east of the Morbinning fire shed

Not long after arriving on the fire ground the crew were involved in a collision with another fire truck whilst enroute to defend a property in an area that was being directly impacted by smoke and fire.

Fortunately nobody in either crew was seriously hurt but the damage to the two trucks was quite severe and both are likely to be written off. Both crews were understandably a little bit shaken up by what has occurred and support is being provided to these crews where they may require it.

It serves to highlight the exceptional commitment volunteer firefighters from across our districts provide year in and year out to serve their communities and we should be very proud and appreciative to every one of them for their unwavering dedication to this vital community service.

Over the next few days Shire of Beverley Bush Fire Brigade members from all parts of the Shire continued to volunteer their time to assist their neighbouring Shire's crews with the important task of ongoing patrol and extinguishment of the contained fire.

Bush Fire Brigades from York, Brookton, Quairading and surrounding Shires all sent crews to fight the initial fire on the Sunday and to relieve tired local crews in the days that followed.

The Shire of Beverley wishes to thank all of its Volunteer Bush Fire Brigade Fire Control Officers and Volunteer Firefighters for the wonderful support they provide to our community. They are always there when needed and are a real credit to Beverley.



# ACTIVE FARMERS @ BEVERLEY

## GROUP FITNESS CLASSES

### WHEN

**Wednesdays**  
5.15pm & 6.30pm  
**Fridays**  
6.00am

### WHERE

**Beverley**  
**Exhibition Shed**

### COST

**FIRST CLASS FREE**  
**\$15 per class after that**

**All members of Beverley and surrounding communities are welcome (not just farmers), and all levels of fitness and experience are encouraged to attend!**

**For more information contact your Active Farmers trainers Ashlyn or Robbie for more information:**

**Ashlyn Ridgway**  
0427 461 506  
ashlynj@live.com.au

**Robbie Wansbrough**  
0428 843 251  
robbie@reapwhatyousow.com.au

<https://www.activefarmers.com.au/beverley-wa>







# Valenti Lawyers Are Now In Northam

valentilawyers.com.au



Valenti Lawyers is a boutique law firm which prides itself on providing a personalised quality legal service. We specialise in eight core services for leading businesses and individuals, each led by one of our experienced senior lawyers; Business Growth & Protection, Dispute Resolution & Commercial Litigation, Finance & Security Services, Insolvency, Land Reservation, Resumption & Compensation, Property & Town Planning, Rural Assets & Succession Planning, and Wills, Probate & Inheritance. You can now find us at the below address in Northam every fortnight!

**Open fortnightly from the 12th February 2021.**

Please head to [valentilawyers.com.au](http://valentilawyers.com.au) to view our Northam office dates, and to book an appointment with one of our staff.

**RSM  
210a Fitzgerald St East.  
Northam WA 6401**





# Star Hearing Consultants

Hear Better To Live Better | INDEPENDENT AUDIOLOGISTS

Expert Hearing Care Services in **Beverley & Brookton**

Do you have  
**Hearing difficulty / Tinnitus (Ringing in the ears) ?**



**Check our Google reviews**  
to see what our patients say about our services!

**1 Hour Free Assessment**

For Limited Time only

## Treating Hearing loss improves...

- ➔ Memory / Reduces the Risk of Dementia
- ➔ Safety and Balance
- ➔ Brain Function / Cognitive ability
- ➔ Long and Healthy aging
- ➔ Mental and Emotional Well being

## Are you a Pensioner / Veteran?

No out of pocket cost to you...

You are eligible to have these tiny hearing aids under the Government Funded Hearing Service Program (HSP)



These days...

**Hearing loss** is more visible than hearing aids

**Free**

Test

**Free**

Hearing aid Fitting

**Free**

Trial

## Regular Clinics in both Medical Centers

Beverley & Brookton	Beverley & Brookton
Viines Medical Practice	Beverly Medical Practice & Saddleback Medical Center

To book a Free Hearing Assessment

**Call : 1800 11 4327**

Or ask at the Reception / your Doctor

**1800 11 HEAR / 1800 11 4327**

**www.starhearing.com.au**



SAVE THE DATE

# Spring Back to Beverley

24th & 25th  
SEPTEMBER 2022

Celebrating 150th Anniversary of Beverley Road Board,  
150th Anniversary of Dead Finish Museum &  
other significant Shire of Beverley projects.

**Be verley** Western Australia  
Be very you

**Be verley WA**  
Be very you

*The perfect venue for you...*

**The Art Deco Beverley Town Hall** is situated in the Avon Valley; a comfortable drive from Perth city. This venue offers a unique, budget-friendly option for your special day.

*Investment*

- ✓ \$1,000 for all inclusions as below
- ✓ 1.5 hour journey from Perth

*Includes*

- ✓ Three Day Access
- ✓ Tables
- ✓ Chairs
- ✓ Cutlery / Crockery
- ✓ AV System / Projector
- ✓ Commercial Kitchen
- ✓ Bar Facility
- ✓ 150+ Person Capacity
- ✓ Main Hall
- ✓ Lounge Hall
- ✓ Dressing Room

*The Beverley Town Hall Experience...*

*Photo Inspiration*

- ✓ Yenyening Lakes
- ✓ Country Peak
- ✓ Vampire Jets (Great Southern Hwy & Lukin Street)
- ✓ Cornerstone Building
- ✓ James Giddy Street Art
- ✓ Station Art Gallery & Platform Theatre
- ✓ Avondale - Agricultural Machinery Museum

*Local Suppliers*

- ✓ Catering
- ✓ Photography
- ✓ Flower Arrangements
- ✓ Accommodation
- ✓ Bus Hire

SHIRE OF BEVERLEY





# BEVERLEY HISTORICAL SOCIETY

presents

## A New Series **Remarkable Women of Beverley**

### **A capable & pleasant young woman who died too soon Marion Daphne Makin - 1908-1940**

Marion Daphne Makin – always called Daphne or Daph - was born about 1908. Her parents were George Stanley (Stan) Makin and Elizabeth Margaret McDonnell. Stan Makin came to Beverley about 1900 from Victoria when he was a 22-year-old. Also new in Beverley at that time were the McDonnell family and the Brody family who hailed from the Coleraine district in far western Victoria. Elizabeth Margaret was the sister of Frank and T H McDonnell, while T H McDonnell himself was married to a Brody. The two Coleraine families were faithful members of the Catholic Church. Stan was not a Catholic but at some point, he married Elizabeth, with their only child, a daughter, Daphne, being born about 1908 probably in Beverley. Stan would have been about 30 and Elizabeth about 44 years old.

From 1909, Stan Makin worked as a wheat buyer for the Perth Roller Flour Mills, travelling the district from York to Pingelly calling at farms. Then in 1911 he was appointed by the Government to be manager of Avondale Estate. He was still working there up to his untimely death after a short illness in 1923 at the age of 45. He was highly respected in the district as *“a good fellow, not given to boasting of his good works, yet ever ready to do them”*. He is buried in Beverley Methodist Cemetery.

The Beverley Presentation Convent School opened in 1909. The school took pupils from Kindergarten right through to High School. Daphne Makin would probably have been enrolled there in 1913 from the age of 5. From 1916 to 1923 her name is mentioned as having passed, first, several stages of Music Examinations and then, Commercial subjects such as Typewriting and Shorthand. She had roles in the Children's Concert and at fancy dress parties. It is also probable that she joined the Girl Guides, as her mother was a good friend of one of the leaders, Miss Vera Ward.

In March 1929, at the age of 21, she purchased and managed a ladies and gentlemen's hairdressing salon in Vincent St that had a circulating library, & sold variety products including cigarettes, tobacco & pipes. This was a short-lived venture as in October of the same year it was sold to Mrs Gill.

Daphne became an employee of the Eastern Districts Agency Company [now Avon Trading] for a time before joining the Beverley Farmers Coop Agency Department [now Beverley IGA] for some years where she proved herself to be a capable and obliging office assistant.

---

Daphne was involved in the sports of Hockey and Tennis. She was the Hon. Secretary of the Star Hockey Club from its inception in 1927. She was a tennis player, playing regularly in Beverley & other towns for several years. In November 1928 she partnered Reta Ford to win the ladies' handicap double competition at the local tennis courts. In 1933 she became joint Secretary of the Tennis Club with Edna Townsend.

It was said she never enjoyed the best of health and spent at least three weeks in Beverley Hospital in 1931. Later in 1934 when she went on holiday to West Murray (on the lower reaches of the Murray River before it empties into Peel Inlet, cottages and boats could be hired) with Matron Pollard of the Beverley Hospital. The following was noted in November 1935:

*Miss Daph Makin who has been ill for some time and has been under treatment in the city is recuperating at Cottesloe. Staying with her is Miss Molly Clifford.*

The Clifford family were associated with the Sacred Heart Catholic church. Later Molly Clifford was a teacher attached to the Beverley State School. She resided with Mrs Makin and Daphne for several years. Mollie was the sister of Olive Wreathall who owned Avon Buildings for many years.

The widow, Mrs Makin, lived a quiet life with friends, such as Mrs Skinks & Vera Ward, occasionally coming to stay. In May 1938 Daphne accepted a position with Mr T W Ethridge, a well-known commission agent in Quairading and departed leaving her mother & Molly Clifford in Beverley for the time being. Her uncle T H McDonnell was now living in Quairading and shortly afterwards in July of the same year, her mother & Molly also moved to Quairading.

The following appeared in the Beverley Times on 11 October 1940:

*Her many friends in the district learnt with regret last Sunday of the death in the city of Miss Marion Daphne Makin, only daughter of Mrs E Makin, of Quairading, and the late Stan Makin, of Beverley. Deceased lived the greater part of her life in this district where she was schooled and later employed. Some years ago, she accepted employment in an office in Quairading and with her mother left Beverley to take up residence in the sister town. She was very capable and made many friends as a result of her pleasant disposition, although she never enjoyed the best of health. The funeral took place at the Roman Catholic cemetery, Karrakatta, on Monday afternoon.*

Daphne Makin was aged just 32 when she died. Her mother would have been aged 76. Mrs Makin continued to live in Quairading for a number of years before removing to Glendalough towards the end of her life. She died there, 14 years after Daphne, at the age of 90.

Both Daphne and Elizabeth are buried in the Catholic section of Karrakatta Cemetery.

Can you Help?

Does anyone have a photo of Daphne Makin we could copy & place in our archives?

## A HUGE THANK YOU TO JEAN WYKES!

At our monthly Branch meeting on Friday, 11<sup>th</sup> February 2022, the CWA ladies had an opportunity to thank our outgoing Vice-President, Jean Wykes. Jean is a quiet achiever who never seeks the limelight but is the first to step up, whether it is a planned event/activity or supporting one of our members who needs a helping hand. She is a very modest, unassuming person who has been an outstanding Vice-President for the past three years. Jean is pictured here with the flowers she was presented with in appreciation. Jean Anderson is our new Vice-President...so we know we are in safe hands once again.



The Lions Cancer Institute Free Skin Cancer Screening Clinic, scheduled for Sunday, 6 March at our rooms (154 Avon Terrace, York) is fully subscribed which is great. However, our President, Dawn Ainsworth, is taking a note of names in case there are cancellations.

CWA York is planning to collaborate once more with the local Community Resource Centre (CRC) to host a children's activity during the school holidays, on Tuesday, 19 April. It is fantastic to have another chance to link up with the CRC in this way.

The abovementioned events may of course be affected by COVID-19 mandates and restrictions; we will just have to wait and see how the situation unfolds in the Wheatbelt. Speaking of COVID-19, Wendy Lehmann from St. John Ambulance has provided us with a terrific resource in the form of a poster (over the page) on how to prepare a COVID-Ready kit. It contains contact phone numbers for various agencies, including crucial mental health support services.

Marion Bateman  
CWA York Member & Media Reporter





## Prepare a Get COVID-Ready kit

With WA's borders set to reopen in early February 2022, now is the time to make preparations for directions to isolate in the event of a positive COVID-19 result.

Check items off as you prepare...



You will need:

- A thermometer
- Pain relief
- Your regular medications
- A plan for who can look after your children, pets, or people in your care if you have to go to hospital
- Masks, sanitisers and gloves
- A plan for how you'll get food and essentials for two weeks such as frozen meals, pet food, nappies and baby formula
- Phone numbers for people outside your home you can call for help
- Stay-at-home activities



### Where to get more help?

WA Health - 1800 595 206 (8am-6pm)

13 COVID - 13 26843 (8am-6pm)

Triple Zero - 000

Coronavirus Health Information Line - 1800 020 080

healthdirect - 1800 022 222

Coronavirus Mental Wellbeing Support Service - 1800 512 348

Mental Health Emergency Response Line - 1300 555 788 (Perth Metro) / 1800 676 822 (Peel Region)

Rurallink - 1800 552 002 (Country WA - 4:30pm-8:30am Mon-Fri, 24 hours Sat-Sun)

Lifeline - 13 11 14

Beyond Blue - 1300 22 4636

### Further information

Visit [www.healthywa.wa.gov.au/COVID19](http://www.healthywa.wa.gov.au/COVID19)

This document is based on a resource originally developed by the Queensland Government





Beverley Soaring Society Still Ranked  
Number 1 in the World  
Steve Hoey

Every year is a good year at Beverley Soaring Society (BSS), but this year is looking to be an exceptional year despite Covid. There is so much good stuff going on it's hard to know where to start. Let's start with why BSS is ranked the number 1 gliding club in the world. The simple answer is, at the time of writing this article BSS pilots have punched out a massive 182,000km with a couple of months of the season remaining. The 2<sup>nd</sup> ranked club in the world achieved a healthy 127,000km ([www.onlinecontest.org](http://www.onlinecontest.org)). Forty-five determined and competitive BSS pilots contributed to our number 1 position in the world but in this article, I am going to single out our number one pilot Norm Bloch for a well-deserved special mention.

Norm's personal contribution to BSS number 1 world ranking this season so far is 48 logged flights between 8<sup>th</sup> Oct 2021 and 29<sup>th</sup> Jan 2022 with a total flight distance of 21,409km. The average distance of the 48 flights is 446km. His best flight this season to date is a whopping 788km. Just to add a bit of spice; in the course of knocking out his 21,409km he smashed 6 National Speed Records, making him the fastest glider pilot in Australia in 6 categories. He also won the WA State Gliding Championship held at Cunderdin in January.



So why is he so good, apart from being a natural aviator. Norm started flying gliders in 1975 at the age of 14. Slightly older now he is still as passionate about flying gliders now as he was when he was 14. He attained his Private Pilots Licence at age 17 and his Commercial Pilots Licence aged 20. After flying a range of small to mid-sized planes throughout the Pilbara for a few years he applied and won a position with QANTAS. After extensive training and a few years of experience he worked his way up to Captain, flying 747 Jumbo jets



internationally. Norm recently retired from QANTAS after 36 years; about the same time they retired the 747 from service. He certainly has many great stories to tell and is now able to dedicate more time to gliding. Thankfully for BSS Norm is still a Glider Instructor at Beverley. Congratulations Norm from all your mates at BSS.

#### WA State Championships

The 2022 Championships were held at Cunderdin Airfield in January. The Champion was Norm Bloch (BSS), Arnold Friends Geerling (Cunderdin) was 2<sup>nd</sup> and Lumpy Paterson 3<sup>rd</sup> (Narrogin). Five of the top ten placed positions went to BSS pilots. Fourteen pilots from BSS competed in this competition. Congratulations to all of you.

On behalf of all competitors a very big thanks is extended to Elif Herdsman ([Comp Director](#)) and Stuart Wood (Ass Comp Director) for organising a very well-oiled and safe competition and thanks to the many other people who also assisted. It was a massive task executed to the highest standard.

Progress Report on the BSS Building Program: BSS President, Geoff Overheu is leading a dedicated team of members with professional experience in building, planning and construction of an Aviation Workshop and Training Facility. To date, the workshop design has been completed, building plans have been approved by the council and quotes for materials have been finalised. The construction phase is planned to commence this March/April. The Training Facility is still in the design phase. Several concepts are currently being considered and costed. A final design concept/plans could be ready to submit to the council in the coming months. It is an absolute credit to the culture of this club that so many members will contribute their time and expertise to planning and building a significant proportion of these facilities.

BSS growth in the last 12 months is quite astonishing, definitely the fastest growing glider club in WA and possibly the fastest growing club nationally. Our membership has grown from 123 to 143 members. The total gliding fleet has grown from 38 to 44 gliders. Our gliding instructors have been working incredibly hard to successfully instruct and guide 12 new members to achieve solo pilot status.



Covid-19: As you are all painfully aware Covid planning, and implementation is in constant state of flux. Consequently, BSS remains vigilant in monitoring and implementing the required changes in WA Government Health Policies in the context of the operation of our gliding club. BSS is also acutely conscious that we are a part of the Beverley community, and we are sensitive to the needs and the safety of the community that supports us in so many ways. To ensure that we are all singing from the same songbook BSS representatives will be talking to the relevant persons in the Beverley Shire Council. For more up to date information about Covid check out the following sites:

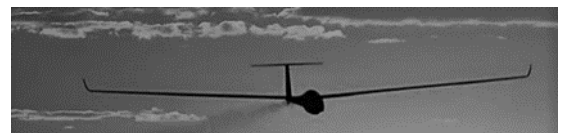
[https://www.healthywa.wa.gov.au/Articles/A\\_E/Coronavirus/Locations-visited-by-confirmed-cases](https://www.healthywa.wa.gov.au/Articles/A_E/Coronavirus/Locations-visited-by-confirmed-cases)

<https://www.wa.gov.au/government/covid-19-coronavirus/covid-19-coronavirus-latest-updates>

Come Fly with Us

For more information regarding air experience flights, membership, pilot training and general inquiries please view our website at: <https://www.beverley-soaring.org.au>, email [bevsoar@beverley-soaring.org.au](mailto:bevsoar@beverley-soaring.org.au) or call Roger on 0407 385 361.

BSS operates and offers pilot training on Fridays, Saturdays & Sundays, weather permitting.






**The Station Garden is available for public use at any time; just open the gates and enjoy!**


**COVID-19 UPDATE:**

Proof of Vaccination must now be shown on entry to the Station Gallery, as well as the wearing of masks. Please practice good hygiene and physical distancing at all our events, and use the hand sanitiser stations provided. If you are feeling unwell prior to events, please do not attend.


**Beverley Art Prize & Easter Art Exhibition**

Entry forms are out and starting to trickle in for the big Easter Exhibition – Beverley’s 53rd Art Purchase Exhibition Thursday 14 – Monday 18 April 2022. Entries close March 18.

The town’s renowned 2D media art show includes the *Beverley Art Prize* valued at \$5000 and besides this overall prize, there are six other sections with prizes of \$1000 each. And there is also a category for children. Anyone wishing to enter works of art into Easter Art Exhibition can visit our website [www.beverleystationarts.com](http://www.beverleystationarts.com) and either enter online or download the entry form and email to Exhibition Secretary [admin@beverleystationarts.com](mailto:admin@beverleystationarts.com)


**Artists-in-Residence at the Station**  
*Artists-in-Residence for February 2022*



Julian and Paula Canny thoroughly enjoyed their time at the Station for the first half of February and we thank Julian for his enormous help in getting our COVID-19 Policy updated since the WA government’s recent changes in Covid regulations, as well as furthering our google docs account.



The second half of the month of February saw Lori Neuzerling busily painting her brilliant botanical and wildlife pictures in watercolour (see above pic).

**Artists-in-Residence for March:**

ROSLYN NEWICK is our Artist in Residency for second half of March (15 – 31). Ros attended Beverley Easter Markets last year with her quirky Tea Cosies.



Ros is a mix media artist, who paints, pots, Botanical dyes wool, fabric and paper and exhibits regularly, and delivers many various workshops and is invited to various events through Australia.

***Nature is her inspiration.***

The Art Station Gallery will be blooming with colorful, tea cosies, Eco Botanical Dyed fabrics and paper, paintings and quilts all creations by Roslyn.



**Create your Own Tea Cosy**





### Create your Own Tea Cosy Workshop



on Sunday 27 March  
at 2.30-5.30pm  
at the Station Gallery  
with an  
Afternoon High Tea  
all-inclusive \$50

All materials, provided for you to create your own conversation piece. All you need bring along is your own tea pot (or buy one at workshop on the day \$10). Followed with an Afternoon High Tea, lovely china, cosies, food and celebrate your Cosy Creation together. Cost all-inclusive \$50 / Maximum 14  
Contact Roslyn directly either in the Station Gallery or Mobile: 040 7992549 to confirm your booking. Bookings close 24 March for catering purposes. So, grab your TEAPOT, get in touch, and book your place - *Let's Get Creative Together*

Please keep an eye on the weekly Bulletin for further information regarding residencies, workshops or any changes to schedule - or contact AiR Coordinator Marylou Hutchinson on 0427085511 or email: [residency@beverleystationarts.com](mailto:residency@beverleystationarts.com)

#### Station Gallery Open Hours:

11.00am – 3. 00pm

Thursday, Friday, Saturday and Sunday

#### **Artists-in-Residence for 2022**

JAN: Tracey McDonald  
FEB: 1-15 Paula & Julian Canny /17-2 Lori Neuzerling  
MAR: 1-15 Mutsuko Bonnardeaux /15-31 Ros Newick  
APRIL: Michele Scott / MAY: Irene Osborne  
JUNE: Anne McCallum JULY: 1 – 12 Lorraine Pichugin  
JULY: 15- AUG 10 Tich Dixon / AUG 11-31 Steph Boyle  
SEPT: 12-30 Thelma Cluning / OCT: 1-16 Trish Davis  
OCT: 17-23 Natalie Blom / NOV: John Kaye  
DEC: 1-14 Adrianna Wasinska-fabian/15-31 Kelsey Diamond



#### **Beverley Station Singers**

Unfortunately, due to recent Covid regulations preventing non vaccinated people inside the Station Gallery and Greenroom of the Platform Theatre, the Beverley Station Singers are no longer able to practice at the Station. For further information regarding recommencement of the Station Singers please contact Sarah Miller who coordinates the group. Phone: 0427464078.



#### **Beverley Amateur Dramatics (BAD)**

The BAD regret that with just four weeks to opening night 'Pirates of Penzance' has had to be POSTPONED due to recent Covid vaccination regulations.



#### NEW DATES FOR:

**PIRATES OF PENZANCE**  
**FRI 23 SEPT & SAT 24 SEPT**  
**& FRI 1 OCT & SAT 2 OCT**

A Gilbert and Sullivan production performed by our local BAD (Beverley Amateur Dramatics)

BOOKINGS:

[www.taztix.com.au](http://www.taztix.com.au) or Bev CRC



**Performing Arts**

### Coming soon to Platform Theatre!

**PERTH SYMPHONY ORCHESTRA**

**BOOK YOUR TICKETS!**



PERTH SYMPHONY ORCHESTRA PERFORMS

**S·T·R·I·N·G·S**

**A QUARTET GONE ROGUE**

SATURDAY 02 APRIL 2022

GATES OPEN 6:30PM, SHOW STARTS 7:30PM

ADULTS: \$35 CONCESSION: \$30 U/12: \$15

TICKETS: BEVERLEY CRC OR TRYBOOKING.COM/BXAXD



WARRBURTON



Yes, it's the Perth Symphony Orchestra (PSO) coming to Beverley! A program of contemporary and classical music, PSO has a passion for finding ways to engage new audiences with the sound of an orchestra. And to emcee this fabulous quartet performance is the gregarious Penny Shaw of DivaLicious fame! Guaranteed to be a night of beautiful music, songs and fun to remember. Phone 0417 983 410 to book tables!





**🎵 LISA WOODBROOK - *Feeling Way Too Good* on Friday 18 February**

It would have been beneficial financially to have seen a larger audience, the 70 odd who did attend were treated to a first class “feel good” performance! Lisa and her band enjoyed themselves as did the audience as they danced away the second half of the show.



**2022 PLATFORM THEATRE CALENDAR OF EVENTS**

February 18: Friday – Lisa Woodbrook – *Feeling Way Too Good*

March: *Pirates of Penzance* – POSTPONED

April 2: Saturday at 7.30pm – Perth Symphony Orchestra *A String Quartet Gone Rogue.*

April 16: Saturday *Easter Markets at the Station*

July 8: Friday *Cloud Nine (The Giovanni Consort)* at 2pm and 6pm - *Exquisite choral soundscapes in the dark*

September 3: Saturday at 2pm *VoiceMoves Choir Muster*

September 24: Saturday *Spring Back to Beverley*

October 27: Thursday at 7pm - *Toni Galati the Musical*

November ? : Saturday - *Tribute show*

December 17: Saturday – *Community Christmas Party* featuring *Yuck Circus*



**FOR HIRE**

# K-LINE SPEEDTILLERS

**3m  
&  
6.25m**

The Speedtiller is a high-performing dual purpose disc-tillage machine used for soil conditioning with superior penetration.

Fire Breaks  
Stubble Retention  
Bog Marks  
Summer Weeds

CONTACT FOR MORE INFORMATION  
OR TO BOOK

BARRY - 0418 903 326

BIMBO - 0419 537 420

9642 1108

[admin@cootemotors.com.au](mailto:admin@cootemotors.com.au)







# Term 1 Calendar of Events

Every Thursday  
9:30am to  
11:30am



**FEBRUARY**

17th: Playgroup  
@ Moort Wabiny Park

24th: Playgroup  
@ Amenities Building Playground

**MARCH**

3rd: Playgroup  
@ Moort Wabiny Park

10th: Storytime & Toy Library  
@ Town Library

17th: Playgroup  
@ Amenities Building  
Playground

24th: Playgroup  
@ Moort Wabiny Park

31st: Playgroup  
@ Amenities Building  
Playground

**APRIL**

7th: Storytime & Toy Library  
@ Town Library

**Storytime**

END OF TERM 1

Playgroup Returns for Term 2  
on Thursday 28th April

**Beverley**  
Toy Library

Any Enquiries to:  
Kelly Aaron (Playgroup President) 0400 772 081  
Melissa Blechynden (Playgroup Secretary) 0429 504 963  
Kelly Mann (Storytime & Toy Library) 0428 779 234

Thank you to The Shire of Beverley  
We are fortunate to have so many excellent facilities in our town that  
we can use as alternative venue options



Beverley Early Years Group  
Beverley Playgroup WA

## Beverley Clay Target Club

Rifle club Nicholas St, Beverley

### 2022 Dates

**9 Jan - 50DB**

**6 Feb - 25SB-25PTS**

**6 Mar - 60MXD**

**3 Apr - 50DB**

**1 May - SHOOTERS CHOICE**

**12 Jun - 25DB-25SB**

**10 July - 50DB PTS**

**7 Aug - 60MXD**

**4 Sept - SHOOTERS CHOICE**

**2 Oct - 25 SB PTS**

**13 Nov - 50 CONT**

**11 Dec - CAPTAINS CHOICE**

Practice Starts @ 9:00 am

Shoot Starts @ 10:30 am Sharp

**New members are more than welcome to come and try, shotgun and ammo can be provided for people without a licence or gun.**



## COUNTRY LINE DANCING

Thursday mornings at the  
Town Hall

Enquiries to  
Jan 0429 952 177

# EMS

## Evert's Mechanical Services

For Affordable, Friendly, Honest Service

*We Come to you, Mobile Mechanic*

- ✓ **We are your local Mechanic, in Beverley.**
- ✓ **Fully trained and Qualified to service your car**
- ✓ **Service your Brakes/Change Brake fluid**
- ✓ **Oil and Filter Change**
- ✓ **General Safety Check**
- ✓ **Car, 4WD, SUV's Old and New**
- ✓ **Change Engine Coolant**
- ✓ **Tune ups**
- ✓ **Battery Replacement**
- ✓ **Other Repairs/Engine/Dash Lights Diagnosed**

**Please Phone us on: 0404-153-264**

**Email: [EvertsMechanical@protonmail.com](mailto:EvertsMechanical@protonmail.com)**





## BEVERLEY MENS SHED

Open every Tuesday morning 8.30am to 11.30am at the old Fire Station. Call in for a coffee, meet the members and see the great equipment for members to use. New members are always welcome. Contact Harvey Morrell for more information on 0427 235 681 or email [president@beverleymenshed.com](mailto:president@beverleymenshed.com)

## Crana Aboriginal Corp. Inc.

Info from Mal Roberts – Hon Director and Advisor.

Even though I have resigned from the president's role, I still speak to Class Action Lawyers under authority on selective matters, one case is going back to 2013.

When requested to do so, I speak to indigenous people in the region.

On behalf of CRANA, I spoke to Mr Steve Gollan, CEO of the Beverley Shire re; Margaret Mourach is recognised as one of our local Elders. Margaret will help the Shire of Beverley whenever required. Mitch Henry is also recognised as out Indigenous Elder on all indigenous matter. I do work with President Mitch and Margaret (we go back 30 years).

My role is to seek Justice for the Indigenous people of Beverley, Brookton Pingelly, York, and Northam. Mr. Steve Gollan must be commended for his years of hard work in Reconciliation Process. Thank you also to our Shire Councillors.

I have been unwell for some time, but nevertheless, I am still dealing with CRANA matters; the work must go on.

Thank you to Margaret, who phoned me on a regular basis to check on my welfare.

Finally, please remember before I issue an Aboriginal Proof of Aboriginality certificate, it must be approved by our local Elders, Mitch and Margaret.

## Thank You

Thank you to all the lovely People who comforted me and send Card's at the passing of my Husband and Companion of 60 Years, Gerhard.

Valerie Gunsch

## BEVERLEY FARM SERVICES

Will be closed on following Tuesdays 1st, 8th & 15th March 2022.

We apologise for any in convenience.

Geoff can be contacted on 0429 461420 should you need him.



## Beverley Bowling and Croquet Club

### A G M

Please be advised that the Beverley Bowling and Croquet Club's AGM will be held on WEDNESDAY 13TH APRIL 2022 7:00PM at the Club Rooms, Forrest Street.

All members are invited to attend.



# Vincent Street Streetscape Project PROPOSED ROAD CLOSURE



Please be advised of the following updated construction works scheduled for Vincent Street for the period from 2nd March 2022 to 31st March 2022:

- Ripping of road, importation of material, compacting/rolling & sealing.
- Sealing of the road commencing on 28th March 2022.
- Main Roads upgrade/resealing works at the intersection of Hunt Road (Great Southern Hwy) from 16th March 2022.

## Closure of Vincent Street

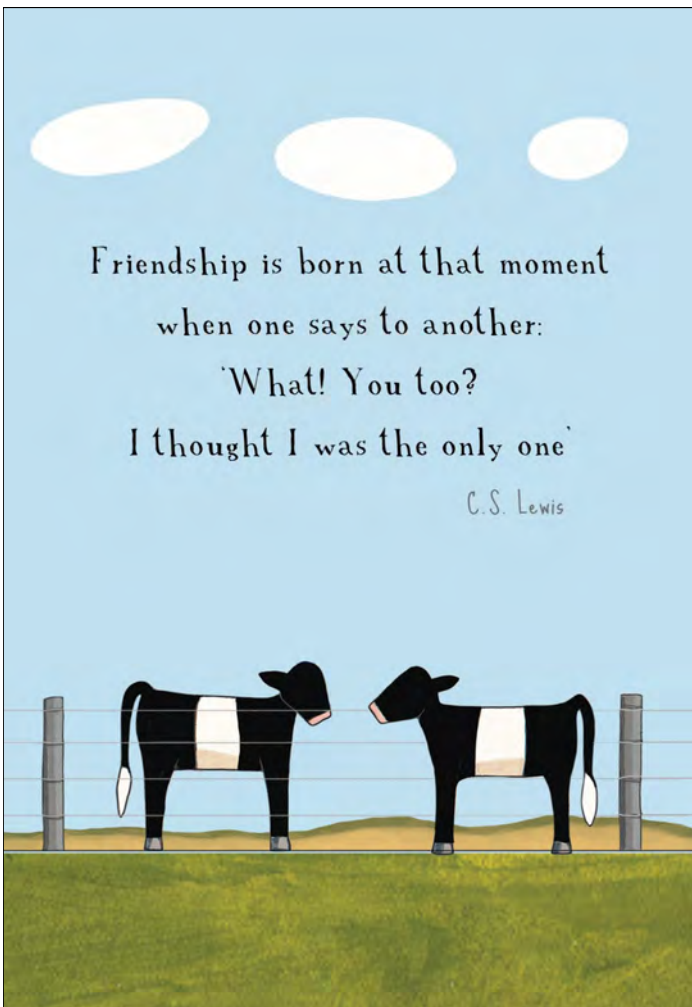
The above works will have the following implications:

- Contractor will close Vincent Street from Hunt Road/Great Southern Highway to the Forrest Street Intersection, Men's Shed Car Park & the IGA/Station Carpark;
- Forrest Street Intersection will be closed from 16th to 31st March 2022.
- The Figtree Carpark will remain open during this time – accessible through detours from Queen Street;
- Alternative car parking will be available as follows:
  - Next to Beverley Pharmacy;
  - On-street parking on Dawson, Queen and Forrest Streets;
  - The Cornerstone Carpark

Fencing will be installed along the footpaths on both sides of the street for safety of the community, footpaths and shops will still be accessible. Fenced walkways will be available for accessibility from one side of the street to the other. Please adhere to all signage during this time as the safety of our community is our absolute priority.

Council is aware of the ongoing inconvenience the construction works are causing the community, we sincerely thank you for your patience during this time.

Stephen Gollan  
Chief Executive Officer



BailiwickLegal.

**BEVERLEY  
LEGAL HOT DESK**

Beverley Community Resource Centre  
141 Vincent St

**DANIELLE EDWARDS**

The team at Bailiwick Legal is excited to launch its new initiative  
**Regional Legal Hot-Desk.**

Bailiwick Legal practices in the areas of commercial, agribusiness, litigation, dispute resolution, wills & estates, employment & workplace, property, mining & access, and tourism law.

Danielle Edwards grew up in the country and is an Associate at Bailiwick Legal.

Danielle will be in Beverley on the following dates between 9.30am - 3.30pm;

**March 15  
May 10  
July 19**

To book a free 20-minute consultation please email [danielle@bailiwicklegal.com.au](mailto:danielle@bailiwicklegal.com.au) or call 0488 727 886



**BEVERLEY**

*Community  
Markets*



**SATURDAY 05 MARCH 2022**

**8am until 1pm**

**The Old School building  
between PO & Shire building**

Gift ideas, fresh produce, crafts,  
baked goods and preserves,  
woodwork plus sausage sizzle.

For more information, contact Val Tylor 0428 601 416

*Proceeds go to the Beverley Junior Sports*

# Opportunity for Farmers in Beverley

We at the Beverley Men's Shed have many discussions on many subjects like this one. We have heard that this harvesting of hardwood in the state forests will be banned from 2024. We also don't know where the alternative hardwood like product will come from. We have talked about bamboo and its potential to replace some of the hardwood market. One of our members has been studying bamboo and its potential for many years and we found it could be grown by farmers or hobby farmers in Beverley after a little research.

There is a huge demand for bamboo products in Australia.

Quotation from Growing bamboos at Agriculture and Food site, [www.agric.wa.gov.au](http://www.agric.wa.gov.au) - "The global bamboos market was valued at US\$74,102.4 Million in 2019 and is expected to reach over US\$98,757.9 by 2026, growing at CAGR (Compound Annual Growth Rate- Investopedia) of around 5.5% during the forecast period from 2020 to 2026. Bamboos provide a range of social, cultural and environmental benefits for society."

We know there are hundreds of different varieties of Clumping Bamboos available in Australia. Please note they are clumping Bamboo, not the runner type. There are varieties that will tolerate salinity, to what extent we do not know.

We also know that bamboo can grow from 30 cm to a metre per day in ideal conditions and will mature ready for harvest in about 3 years. Bamboo also releases 35% more oxygen to the atmosphere than eucalypts.

If there is a good amount of bamboo produced in Beverley small industries could be established here to process bamboo into usable products. Some of the products from bamboo are clothing, weaving, chip board, cutlery, Timber and many more. In Asia it is used for building houses, bridges, fences, scaffolding and more. The tensile strength of Bamboo is greater than mild steel. Bamboo is being used to replace many plastic products too. Bamboo is antibacterial, antiviral and antifungal.

For further information try the internet. Or come to the Men's Shed and talk to the authors.

coffee  
understands me

BEVERLEY  
BTS  
TYRE SERVICE

SPECIALISING IN  
**AGRICULTURAL & HAULAGE  
TYRES, REPAIRS & BATTERIES**

Call H & Alex Today!  
**0407 457 427**

AC Delco Castrol SP AutoPro

48 DAWSON ST, BEVERLEY





## Beverley Historical Society Dead Finish Museum

bhsdeadfinish@gmail.com

Unfortunately, the heat has stayed around and has made it difficult for members to do projects at the Museum in our off season.

On Wednesday 16th February and Thursday 17th February, we participated in the "Beverley History Walk and Project" with the students of the BDHS run by Kaitlyn Elsegood.

Apart from the heat everyone had a great time visiting different points of interest around the town and learning some of our History. Many thanks to everyone involved and special thanks to all the students.

In recent months we have begun researching some of the women of Beverley who have not previously had much exposure. We hope to present their stories over the next few months in a new series starting this month.

As you are all probably aware on 24th - 25th September 2022 Beverley is holding "Spring back to Beverley" to celebrating 150 years for Beverley Road Board and the Dead Finish Museum so hoping for lots of visits that weekend to appreciate our great town.

This Historical Society hope to have a display of some of the old clothes we have at the museum. So, we need help. We are after some dressmaking mannequins that we could loan for that weekend. If you have one and are happy for us to borrow, please contact Joy on 9427411881 or Glenys 0417973559.

We are having a busy bee to uncover and dust at the Museum on Wednesday; Thursday & Friday 2,3. & 4 March 2022 from 8.30a.m.

The Museum will be opened for the year on Sunday 6th March - 11a.m. to 3p.m.

The next general meeting is Monday 14th March at 1.30p.m.

New members are always welcome. We can be contacted by email on [bhsdeadfinish@gmail.com](mailto:bhsdeadfinish@gmail.com)

# Mia DAVIES MLA

Leader of The Nationals WA

**CENTRAL WHEATBELT**



**Northam Office**  
171 Fitzgerald Street  
(PO Box 92)  
Northam WA 6401  
Ph 08 9622 2871  
Fax 08 9622 1668

**Merredin Office**  
The Old Town Hall, Mitchell St  
Merredin WA 6415  
Ph 08 9041 1702  
Fax 08 9041 2554  
Freecall 1800 673 914

[mia.davies@mp.wa.gov.au](mailto:mia.davies@mp.wa.gov.au)  
[www.miadavies.com.au](http://www.miadavies.com.au)  
MiaDaviesMLA  
facebook.com/MiaDaviesMLA

**THE NATIONALS** for Regional WA

Authorised by M.Davies, Northam Boulevard Shopping Centre, Fitzgerald Street, Northam.



**No excuses**

**See your doctor if you notice anything different with your body.**



For more information visit [www.findcancerearly.com.au](http://www.findcancerearly.com.au)



**WE  
ARE HIRING**

**TRAINEESHIP AVAILABLE**



**Certificates available in Tourism, Events  
or Marketing and Communication**

- GET PAID TO STUDY AND WORK
- GAIN CONFIDENCE AND EXPERIENCE
- WORK WITHIN A NON-PROFIT ORGANISATION

**JOIN OUR TEAM  
AT BEVERLEY CRC**

SEND YOUR COVER LETTER & RESUME TO: [beverley@crc.net.au](mailto:beverley@crc.net.au)

**TRAINEESHIP - 12 MONTHS**

Applications are now open for a full-time trainee at the Beverley Community Resource Centre. The successful applicant will be working between both the Beverley CRC and the Tourism Department at the Shire of Beverley.

The position involves both on the job training and TAFE course completion to a Certificate II or III level. A variety of four different traineeship options are available to study: Tourism, Events, Business or Marketing and Communication, however applicants that seek a Certificate III in Tourism will be considered as more favourable.

We are seeking a motivated person who is well presented and keen to commit themselves to a traineeship for a period of 12 months, during which time they will receive on the job training in a wide range of administration, tourism and community development activities.

Send you resume and cover letter to:

Amor Moulton - Coordinator  
 Beverley Community Resource Centre  
 PO Box 310, 141 Vincent Street  
 Beverley WA 6304

Email submission: [beverley@crc.net.au](mailto:beverley@crc.net.au)



**MAKEUP  
WORKSHOP**

with  
*Courtney Hooper*  
**HOOPER ARTISTRY**

**WEDNESDAY 13 APRIL 22  
10AM TO 3PM**

*Limited Tickets*  
\$40 PER PERSON (13Y+)  
INCLUDES TUITION + LUNCH  
+ BEAUTY MIRROR

**KILLER BROWS  
DRAMATIC EYES  
CONTOURING  
DAY TO NIGHT LOOK**



Beverley CRC 08 9646 1600 141 Vincent Street Beverley



**WIN  
DYSON  
VACUUM**

**12 week cleaning +  
declutter challenge**

\$20 entry fee

Registrations close 01 April  
Challenge start 04 April

**The more challenges  
completed the more chances  
to win!**

Every completed weekly challenge gives you one cleaning token into the draw \* CRCCOMM3021  
 Bonus cleaning tokens are up for grabs by completing **Bonus Challenges** throughout the challenge.



**FRIDAY  
BINGO**

Beverley Cornerstone - 141 Vincent Street  
 Friday 25 March 2022  
 Eyes down 1pm - Finishing 3pm  
 Afternoon tea available  
 For more information contact Sam 9646 1600



**CRC Business  
Breakfast**

FRIDAY 18 MARCH 2022



**Pancake  
Day...**



## Learning + Growing Together workshops

Our team have successfully secured grant funding from the Department of Communities and we will be hosting a series of gardening workshops all held at the Beverley Community Garden. Tickets for the **Pest Management** are now available at the Beverley CRC and registrations for the free **Bush Tucker Workshop** are now open.

### PEST MANAGEMENT WORKSHOP - MONDAY 04 APRIL - 10.30AM

Organic and sustainable gardening practices with ABC Radio presenter Sabrina Hahn. *\$5 per person.*

### BUSH TUCKER COMMUNITY PLANTING DAY - 22 APRIL

Bush Tucker is suited to our local environment and it's packed with nutrients, join us at this information session and community day, as we learn all about bush tucker from an expert. *Free event.*

### STREET FOOD PROJECT - MAY

Feed our community with street food is a project supported by our local Shire of Beverley. We will be planting fruit trees around our town site and we will be bringing a fruit tree expert to Beverley to teach us about pruning and maintenance. *Free event.*

### HOW TO BUILD A BIRD HOUSE - JUNE

Do you want to attract more birds and wildlife into your garden? These bright birdhouses will not only attract birds but look fantastic. *\$15 per person.*



## Services WA update

We have been busy at the CRC assisting our local residents installing the Services WA app on their smart phones to ensure they have their COVID certificates available when entering mandated establishments. This service is free, but only available by appointment due to the length of time it takes to set up accounts and install the multiple apps needed. If you require assistance, please contact the CRC to book your appointment.

On a more serious note, we feel it's important to point out that many people are risking their private information by copying their drivers licence onto the back of their COVID certificate prior to laminating into a wallet size card. Whilst this is seemingly convenient for identification purposes, please be aware that you are opening yourself to identity theft and fraudulent activity by having these two documents combined.

If you misplace or lose this one card it could be disastrous both mentally and financially. We are happy to reduce and laminate the COVID certificate, but we strongly recommend against putting your driver licence on the other side, it only takes a minute to pull out your identification but takes years to build up your bank balance.



## Beverley Bulletin

Enjoying the new Beverley Bulletin?

Email your adverts to [beverleybulletin@westnet.com.au](mailto:beverleybulletin@westnet.com.au) or call in to the CRC by 4pm every Wednesday to secure your spot.

Front cover posters are only \$10 per edition.

Bulletin Newsletter

## Advertising Rates

**BUSINESS ADVERTISING** \$5 per week, standard size business card - including graphics

**FOR SALE, GARAGE SALES & EMPLOYMENT** \$5 per advert per week, \$7 per advert with image

**COMMUNITY GROUPS NOTICES** One advert per week, text only - FREE  
\$5 per week graphic advertising i.e. posters

**Community Groups - long term advertising**  
Must be a member of the CRC or pay 50% off regular advertising rate

**FREE TO ADVERTISE** Funeral and death notices, thank you and congratulations, free goods

**LOST & FOUND** Free for 2 weeks maximum, to extend advertising \$5 per week

**Non Beverley residents, businesses and community groups** \$5 per week to advertise





## Beverley Badminton

Every Wednesday Morning at gam  
at Beverley Shire Hall

We hope to see you all there, new members very  
welcome, come and have a go!

COVID Restrictions are to be adhered to, players will  
need to provide proof of double vaccination and need  
to wear masks when NOT playing, thanks.

Social and Competition Games Only

Please wear closed in shoes. Rackets are provided

### NEW MEMBERS WELCOME

For More Information or Enquiries  
Find us on Facebook  
or email [beverleybaddy@outlook.com](mailto:beverleybaddy@outlook.com)  
or contract Elaine on 0408 903 478

## Yarns & Yarns

EVERYONE IS WELCOME FOR A FUN MORNING  
OF CRAFTING - EVERYTHING FROM  
CROCHETING, KNITTING, SCRAPBOOKING TO  
SEWING. JUST BRING YOUR BYO CRAFT  
PROJECT AND JOIN US FOR LAUGH AND  
MORNING TEA.



Mondays at 10.30am  
CRC Cornerstone  
Morning tea available \$3

Are you interested in the future planning  
of Health Services in Beverley?

## DOES YOUR HEALTH MATTER?



Call Local Health Advisory Group  
Chairman - Keith Murray  
M: 0458 460 737  
E: [jundy52@icloud.com](mailto:jundy52@icloud.com)

## Local Health Advisory Group

### Be heard

Advocate for health  
services issues  
important to you

### Be involved

Collaborate with local  
health services to  
bring about positive  
change, improving the  
health and wellbeing  
of our community

For more information

Contact Keith Murray

0458 460 737 [jundy52@icloud.com](mailto:jundy52@icloud.com)





Take the opportunity to join in gentle activity aimed at general fitness and falls prevention.

## Stay Active

with the  
Beverley Everlastings

Stay Active is a weekly one-hour keep fit session for those who find gentle aerobic, strength, balance and stretching exercise beneficial to their health.

The exercises are designed for over 50s, but younger participants are welcome. Those less mobile or those recovering from accident and illness also find the exercises useful.

Chair exercises are available and participants can opt to do all or some of these.

Stay Active

**Date: Tuesday's**

Time: 9:00am

Place: Beverley Recreation Centre

Cost: \$1

Come along for social-distancing fun activity. Stay Active is a volunteer community health program



Government of Western Australia  
Department of Health

Who let the cows out?



# BEVERLEY QUILTING GROUP

We meet on Tuesday's at the Masonic Lodge in the back room. We start at 9.30am and finish at 2.00pm

\$2 donation per session and BYO lunch.

For further information contact Jan Sherwood on  
0438 019 510

### Card Games at CWA

#### BRIDGE

**WHEN:** Monday's

**WHERE:** CWA Hall

#### SAMBA

**WHEN:** Saturdays

**TIME:** 1.00pm

**WHERE:** CWA Hall

Afternoon Tea provided -

Phone 9646 1271



BEVERLEY  
PHYSIOTHERAPY

### **Kahlia Ferguson Physiotherapist**

Located in the Cornerstone Building. Appointments available Monday and Tuesday

Sports injuries, osteoarthritis, muscle strains, neck pain, back pain, headaches, post-op management

Women's and Pelvic Health reviews available with Physiotherapist **Janine Murray** monthly

Enquiries and Bookings:

Phone 0437 709 577

Email: [admin@beverleyphysio.com.au](mailto:admin@beverleyphysio.com.au)

Online Bookings: [www.beverleyphysio.com.au](http://www.beverleyphysio.com.au)

# LOCAL BUSINESSES



## FAIRCLOUGH WOOL

NEW

DIFFERENT

BETTER

### Woolgrowers!

**BONUS** of \$10/bale when you broker your wool clip or a line of wool (*e.g. lambs, crutching etc.*) through Fairclough's.

**BONUS** - not ready to sell your wool yet?  
Fairclough's pays you to store your wool on your farm.

- ◆ Buying oddments/shed clean ups
- ◆ On farm weighing
- ◆ Wool packs replaced
- ◆ Same day payment
- ◆ Growers large & small



Enquiries and T's & C's Mike Fairclough 0429 635 999



## E Squire Contracting Services

Water Supply  
Windmills & Accessories  
Solar Pumps:  
Sales, Service, Installation  
Fencing & Yards  
Trenching & Poly Pipe Laying

**E Squire Contracting Services**  
Beverley and surrounding districts

**Phone: 9646 0800**

**Errol Squire 0438 682 687**

## Painter Decorators

All repairs & painting

Lyndon & Cameron Grover

0427 661 302

lydongrover@bigpond.com

Reg: 3941



• Plastering

• Pressure Cleaning Roof

• Gyprock

• Spray Painting

• Repairs

• Gutter Replacing





OPTOMETRIST  
AVAILABLE ON  
TUESDAY'S  
*in Beverley*



**Peter Tidman  
OPTOMETRIST**

If you are over 65 years of age,  
you are entitled to a yearly  
bulk billed check-up.

We encourage you to keep  
on top of your eye health.

You can find us at the  
RSL Hall, 50 Forrest Street, Beverley.

Appointment bookings  
Please call Beverley CRC 9646 1600.



BEVERLEY ELECTRICAL SERVICES

**BEVERLEY ELECTRICAL SERVICES**

EC 006578

*Proudly servicing Beverley and surrounding  
districts since 2010, this locally owned  
family business can help you with all your  
Electrical needs*

Karl and his team offer

All your General Electrical Requirements PLUS

- Cel-Fi Mobile Boosters
- Quality LED Lighting Solutions for any application
- Split Air Con Installations
- Trenching for underground power
- Quality Solar Systems
- Telephone & Data Cabling

**Call Karl on  
9646 1222**

4 De Lisle Street, Beverley  
sales@beverleyelectrical.com.au

**Regional Antennas**

**Plus  
has closed**



Alan and Vicki would like to thank  
all our past customers for the  
support you have given us over the  
last 12 years. We sincerely  
appreciate it. Unfortunately, due to  
health issues we can no  
longer continue operating. Our  
sincere apologies and  
again, Thankyou.

Established in 1997, proudly servicing Beverley and surrounding areas



**BEVERLEY GAS + PLUMBING  
SERVICES**

PL 9723  
GF 017690  
BFL 3108

**Beverley Gas and Plumbing is your local plumber  
for all your plumbing and gas needs.**

**DJ YATES**

Authentic Heritage Restoration

BRICK AND STONEMWORK  
RESTORATION  
AUTHENTIC REPOINTING OF  
MORTAR, RISING  
DAMP RECTIFIED  
PROPERTY  
MAINTENANCE



**PHONE DAVE**

**0419 041 542**

- Renovations
- Blocked drains
- Septic and leach drains
- Dripping taps
- Gas installs and maintenance
- Backflow prevention
- Hot Water
- Sewerage conversion

**Kodie Fleay**

**Phone 0418 929 141**

Email [beverleygandp@gmail.com](mailto:beverleygandp@gmail.com)

# NATWAY FURNITURE & CONSTRUCTION

ABN: 62 824 726 465

WAYNE & NATALIE ASHWORTH

Qualified Carpenter &  
Joiner Tradesman

General Building Work

Furniture Construction  
& Restoration

## CONTACT US

27 Brooking Street, BEVERLEY

Wayne 0417 973 415

Natalie 0429 491 039

[natwayfc@bigpond.com](mailto:natwayfc@bigpond.com)

## WESTDALE TIMBER

T/A R.L. & T.L. TAMBLYN ABN. 106 854 06

### TREE TRUNKS REMOVED TIMBER SLAB SALES

PLEASE DON'T BURN UP GOOD USEABLE TREE TRUNKS

SAVE THEM FROM THE CROPPING CLEAN UP FIRE

DON'T LET THEM ROT AWAY TO WASTE

I WILL CHAINSAW THE TRUNK OUT OF THE TREES

LEAVING THE BRANCHES FOR YOU TO PUSH ONTO STUMPS  
TO EASILY BURN UP

300MM AND LARGER TREE TRUNKS

WANTED DEAD OR ALIVE BY THE TRUCKLOADS

STANDING DEAD OR STORM WINDFALL TREES REMOVED

MARRI/RED GUMS, JARRAH, WANDOO/WHITE GUMS,  
SHEOAK, TUART, BLACK BUTT AND PINES

*Save yourself time and effort.*

**PLEASE CALL RICKY 0419 903 829**

# SARAH SOMERS

## LAWYER

SERVING THE WHEATBELT COMMUNITY

Family Law - Divorce - Separation

Property Settlement - Restraining Orders

De Facto Relationships

Children's Issues - Contact/Residence

Competitive hourly rates

Reduced fee for Initial Consultation

📍 85 Fitzgerald Street, Northam WA 6401

☎ 9622 9687

✉ [sarahsomers@iinet.net.au](mailto:sarahsomers@iinet.net.au)

# History

# Vincent Street



As part of the Heritage Trail component of the Vincent Street Streetscape Project, The Shire of Beverley is seeking photos or video footage of **Vincent Street** (from Hunt Road to the Bridge) from **ANY ERA!**



If you would like to share a photo and are happy to sign a general release form for us to use a copy of your photo or video then please contact Stefan 9646 1200 or email [planner@beverley.wa.gov.au](mailto:planner@beverley.wa.gov.au)

*Thank you to those who have already contributed!*



# TAX RETURNS

## FORTIZ BUSINESS SOLUTIONS

(Registered Tax Agent & Certified Public Accountant)

Tax Returns for all entities  
Business Consulting  
Software solutions / setup  
Bookkeeping / Accounting

### OFFICE HOURS:

FRIDAY 9.00am – 4.30pm

101 VINCENT ST (Bankhouse) BEVERLEY

Please phone for an appointment

9646 0282



**Beverley**  
MASSAGE THERAPY

Monday 9.30 - 6.30pm  
Friday 9.30am - 2.30pm  
by appointment

Weekend appointments also available at certain times. Call or message Christine on 0408 369 998 or visit [www.facebook.com/vitaminAskincare](http://www.facebook.com/vitaminAskincare)

In Beverley Chiropractor Centre in the Cornerstone Building (Entrance off Dawson Street)

# RA-AN ENTERPRISES

EARTHMOVING CONTRACTOR

Dam sinking  
Dam cleaning & enlargements  
Fence Lines  
Shed sites etc.



Dozer & Excavator Hire  
Dozer with Rake  
Can provide Bobcat - Backhoe - Grader - Side Tipper  
For larger jobs 54 tonne Dozer

Contact: Ray 0428 936 621

## BEVERLEY CHIROPRACTIC CENTRE

Dr Liam Welfar

CORNERSTONE BUILDING

141 Vincent St, Beverley  
(Entrance off Dawson St)

08 9646 0523

Back Pain? Neck Pain? Headaches?  
Sporting Injuries? Postural Problems?  
Call us today to find out how I can help.

Hicaps facility available onsite

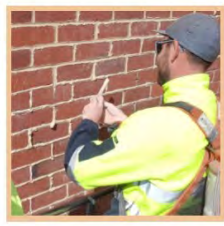


**WHY CHOOSE US**


- ✓ Family Tradition Since 1945
- ✓ We are committed to deliver the best possible Customer Service experience for our Customers
- ✓ No pushy salesman on commission
- ✓ Our Team are direct Employees of Brick and Mortar Restoration
- ✓ We train Apprentices in Heritage Brick Restoration
- ✓ No External Call Centres
- ✓ The Owners of the Business Ross & Tammy Femihough are always available
- ✓ State Distributor of Thorhelical products
- ✓ Approved Installers for Thorhelical Remedial Solutions
- ✓ Employment Workplace Confidence Member
- ✓ Workers Compensation Insurance
- ✓ Product and Public Liability Insurance \$20 Million
- ✓ State Distributor of Round Tower Hydraulic Natural Lime

Over 60 years of experience in the  
*Building Industry, Restoration Industry,  
Insurance Builders and Brick Repairs Industry*

**Tuckpointing | Mortar Pointing**  
**Stonemasonry | Crack Repairs**  
**Brick Restoration**  
**Limestone Restoration**  
**Rendering | Ceiling Repairs**  
**Pebble Dash Render**  
**Stucco Render**  
**Lintel Replacements**  
**Wall Alterations | Carpentry**  
**Plastering | Paint Removal**  
**Lath and Plaster**



Call 1800MORTAR (667827) [www.brickandmortarrestoration.com.au](http://www.brickandmortarrestoration.com.au) [info@brickmortar.com.au](mailto:info@brickmortar.com.au)





## Unique Strokes W.A. Painting & Decorating

Reg. No. 4236

ROB BAIN

QUALIFIED LOCAL TRADESMEN

For Guaranteed Traditional  
Workmanship & Prompt Free Quotes  
**Phone: 08 9647 2102**  
**Mobile: 0418 904 013**



## SHEDS FOR ALL PURPOSES



Offering robust protection from the elements, our Australian standard modular building systems are engineered for strength in all conditions.

Designed for the agricultural and hay markets, with the flexibility to suit many other applications, our shed range will safeguard your valuable farm machinery and business assets.

- Supply only or supply and install options available
- Western Australian owned and operated business
- Locally manufactured products and components
- Standard and customised designs
- Fully bolted framing system
- Project management services including council approvals
- Registered builder with an extensive farming background



With an extendable modular design including optional bay and end wall additions plus self-build to fully installed options, there's a customisable system to suit your needs now and for years to come.

**0427 424 672**

ryan@phoenixbuildingsystems.com.au

[www.phoenixbuildingsystems.com.au](http://www.phoenixbuildingsystems.com.au)

# LEH EARTHMOVING



LOCAL BUSINESS, SERVICING BEVERLEY FOR OVER 10 YEARS

## Beverley Earthmoving & Grading

**GRADER - BACKHOE - BOBCAT  
TIP TRUCK - EXCAVATOR  
SIDE TIPPER - DOZER**

ROAD BUILDING AND MAINTENANCE

FIRE BREAKS - CONTOUR BANKS - ROADED CATCHMENTS

HOUSE PADS - SEPTIC SYSTEMS - SAND, GRAVEL AND BLUE METAL

DAM BUILDING AND CLEANING

**CALL- DAN WILKINSON**

**0417 093 090**

EMAIL- DAN.ZOE@PM.ME

[WWW.FACEBOOK.COM/LITTLECOHILLEARTHMOVING/](http://WWW.FACEBOOK.COM/LITTLECOHILLEARTHMOVING/)

## BROOKTON PLUMBING

ABN: 37 675 595 336

**FOR ALL YOUR  
PLUMBING MAINTENANCE  
AND GAS FITTING NEEDS**

**\*PLUS SEPTIC WASTE  
REMOVAL**

PHONE:

**SEAN 0413 480 543 or  
NATASHA 0422 013 889**

PL: 7130 GF: 006947 SWR: T235

## AVON GLAZING

Everything Glass...

Windows Splash Backs  
Mirrors & More

Ron Robinson  
**0427 185 291**



# Countryside Memorials



Cast Stone  
Granite  
Marble  
Plaques

Added Inscriptions  
All Repairs and Restorations

25 YEARS PROFESSIONAL EXPERIENCE  
FREE DESIGN AND QUOTE

Servicing All W.A. Country Areas  
**9696 0466**

**OXTER SERVICES**  
www.oxter.com.au  
oxter@westnet.com.au

## NEED PRACTICAL TRADE ASSISTANCE?

# D & M Services

(Design and Manufacturing Services)  
Solving a range of practical needs and problems..

### Specialising in:

- ✓ Kitchen renovations
- ✓ Shop fitting and modifications
- ✓ Furniture restoration
- ✓ General carpentry
- ✓ Alterations & installations
- ✓ Metal based fabrication
- ✓ Motorhome and Caravan fitouts
- ✓ Pergolas, Decks & Gazebos
- ✓ Designing and planning

**Guy Slingerland** **0403602335**

**PURSLOWE TINETTI  
FUNERALS .com**

*Cremations & Burials  
Country or City  
Pre-paid Funerals*

*Arranged in your home or  
264 Fitzgerald St Northam*



**Call the Tinetti Family  
9622 1411**



AUSTRALIAN  
FUNERAL  
DIRECTORS  
ASSOCIATION

## WANTED



### BLOWNOUT SHEARERS

Contact: Jack Dugan Phone: 0450609281

Email: surebetss@hotmail.com

Shearing services provided, cost plus rate or cocky shearing, full crew up to five stand available, clean, tidy, professional 25 years industry experience.

**VALLEY AIR  
CONDITIONING  
& REFRIGERATION**  
0408 755 466

Supply and Installation of all types of air-conditioning and refrigeration systems. Split, Ducted, Evaporative, service and repair to domestic, industrial and commercial.

Throughout the Avon Valley and Wheatbelt, no job too far, call Mark for a free quote

Email valleyaircon@outlook.com

ARC Lic AU42118

## BEVERLEY STORAGE & TOWING

HUGE NEW PREMISES LOCKED & FENCED

\$100 A MONTH CARS, CARAVANS, BOATS, MOTORHOMES WE HAVE ALL OF YOUR STORAGE NEEDS COVERED.

TILT TRAY WITH WINCH CAR TRAILER  
PICK UP AND DELIVERY - ALL AREAS

**BRETT HIGGINS**

**0400 048 976**

beverleystorage@hotmail.com

www.facebook.com/BeverleyStorage







Old charm country pub  
Accommodation and free  
camping  
Air con and character dining  
rooms  
VISIT FOR THE EXPERI-  
ENCE  
OPENING TIMES:  
Everyday Dinner from

PH: 9641 4095

444 GREENHILLS

# BEVERLEY DEZIGN

Renovations,  
Alterations, BBQ's,  
Brick Fences, Steps,  
Retaining Walls,  
Brick paving laid in mortar

Phone  
Michael 0407 645 001  
Barry 0417 181 724



*"We Come to You"*

0429 001 393

[www.avwindscreens.com](http://www.avwindscreens.com)

ANIMAL HEALTH, CHEMICALS, FENCING, FERTILISER, PET FOOD, SEED, STOCK FEED, WATER EQUIPMENT



LOT 502 DE LISLE STREET, BEVERLEY

TRADING HOURS MON-FRI 8AM-5PM

BARRY FRASER 0427 940 827



*Locals Supporting Locals*





northam optical



- Bulk billing to Medicare
- HBF & DVA Provider
- Competitive prices
- Great range of frames & sunglasses
- Locally owned and operated

[www.northamoptical.com.au](http://www.northamoptical.com.au)

138 Fitzgerald St Northam WA P 9621 1131  
E [northam.optical@yahoo.com.au](mailto:northam.optical@yahoo.com.au)



# BEVERLEY LIBRARY

Open Monday  
to Friday  
9.00am to 4.30pm



# S#!T SUCKERS



## SHEARING SHED CLEANOUT

LANDPOINT HOLDINGS 9398 4666

Call Jack on  
**0427 801 219**

Bluejay 

  BluejayAg

Lorretta Adams

AG SOLUTIONS

**Heavy Vehicle Accreditation Auditing**

WA Certified Auditor #208982

Authorised to Conduct **Main Roads WA**



Heavy Vehicle Accreditation Auditing

(Fatigue & Maintenance, Dimension/Loading & Mass Management Modules)

**Book Online**

[www.bluejayag.com.au](http://www.bluejayag.com.au)

Flexible service, able to meet at a mutually convenient location

 [hello@bluejayagsolutions.com.au](mailto:hello@bluejayagsolutions.com.au)  0437 282 797

Located behind the Beverley Medical Practice Cullen House  
106 Forrest Street Beverley

## WE ARE BACK

Open 8.00am - 1.00pm  
Monday, Wednesday & Friday



All enquiries to Sue the Phlebotomist -  
Phone: 9646 0724

*Please note that Western Diagnostic Pathology  
will accept all pathology collection forms.*

### York Chiropractic

MacLachlan Centre - 4 Trews Road



Clinic available every week

**9641 1500**

Dr Alexandra (Sacha) Browne  
*B.Sc (Chiropractic) B.Chiropractic*



Also available in Cunderdin and Merredin

## C & B TRANSPORT

DELIVERING GENERAL FREIGHT AND CHILLER GOODS

3 DAYS PER WEEK OR AS REQUIRED

TO

**BEVERLEY, BROOKTON, PINGELLY**

FROM

**PERTH DEPOT CANNINGVALE MARKETS**

PLEASE CONTACT PAUL BALDWIN

ON

**0417 953 968 or 08 9646 0461**

**BIG ENOUGH TO DO THE JOB SMALL ENOUGH TO CARE**

## BEVERLEY *Transport*

Your local carrier for over 30 years.

**GRAIN, FERTILISER, LIME, HAY,  
WOOL AND SIDE TIPPERS AVAILABLE**

Garry & Sarah Miller

**0428 464 066**

[admin@beverleytransport.com.au](mailto:admin@beverleytransport.com.au)

**ChemDry®**  
*Drier. Cleaner. Healthier.™*  
**Betta Finish**



Superior carpet  
& upholstery  
cleaning

**Freecall 1800 017087**

[bettafinish@wn.com.au](mailto:bettafinish@wn.com.au)

Fax 08 96225473





**AVON TERRACE DENTAL | YORK**  
 your smile. our passion.

**Now Open 9am to 5pm Monday to Friday!**

**Our Services:**

- Preventative and General Dentistry
- Children's Dentistry
- Anxiety Management
- Cosmetic Dentistry
- Implants
- Endodontics
- Crown and Bridge
- Teeth Whitening
- New Dentures and Repairs
- Emergency Dental Care
- Veterans' Affairs

*New Patients Welcome!*

*Participating provider for*

129 Avon Terrace  
 York WA 6302  
 (08) 9641 2123



**York**  
 Estate Agents

**York Estate Agents**  
 (Beverley Division)

**Good, Bad or Ugly We Sell!**

Free Appraisals  
 "Properties WANTED we have qualified buyers waiting now"

**Estate Experts**  
 Professional and Trustworthy

Residential and Rural - Mike Bawden  
**0403 268 158**

Rentals - Jenette Callaghan  
**0418 929 011**

Office - 9641 1335  
 Email: [yorkfn@westnet.com.au](mailto:yorkfn@westnet.com.au)  
[www.yorkfn.com.au](http://www.yorkfn.com.au)

# Dawson's Concrete & Reinforcing

“Your Local Beverley Concreter”

- Concrete Formwork & Steel Fixing
- Driveways, Shed floors, Maintenance pits, Silo pads, Super sheds, House pads
- Fully mobile service
- Over 30 Years Experience
- 7 Days A Week
- Professional, Reliable Service

*Phone for a Free Quote*

**SANDY DAWSON**

**Mobile: 0417 375 221**

Email: [pameladawson@bigpond.com](mailto:pameladawson@bigpond.com)

FB: [www.facebook.com/dawsonconcrete](http://www.facebook.com/dawsonconcrete)

## SHAZMAC PLUMBING

### PROUD TO BE YOUR LOCAL PLUMBER

Plumbing Licence: PL 5829 Gas Fitter Licence: GF 7422 RHL: L100443  
ABN: 18 531 685 326

For all your plumbing & gas fitting needs

**Phone 0408 189 987**

PO BOX 116

BEVERLEY WA 6304

[shazmac1@westnet.com.au](mailto:shazmac1@westnet.com.au)

NO job is too big or too small.



### DRUG & ALCOHOL COUNSELLING

The Wheatbelt Community Drug Service Team will be visiting Beverley Hospital fortnightly.

Appointments phone Jackie Darby 96211 055.

### Mulesing Contractor



For all your Mulesing Requirements  
Beverley, York  
and surrounding areas

Contact Terry Slade  
0427 635 065



## Primary Health Services

Available to the community of Beverley

### Child Health Nurse - 9690 1320

To make an appointment, Northam Hospital Admin Staff will assist you in setting an appointment time, which will be, on most occasions, a Monday

Northam also provide Child Development Services via referral - 9690 1320

### School Health - 9641 0200

### Dietetics - 9690 1320

### Occupational Therapy - 0429 466 224

**Physiotherapy** - a doctors referral is required - please send all referrals to PO Box 312 Northam 6401. Clients will be acknowledged with a letter informing them of the approximate wait time.

**Podiatry** - email: admin@comopodiatry.com.au or call 9450 6200. Attendance is generally a Monday. If eligible for an EPC Plan which is through referral from a Doctor, Como Podiatry will bulk bill Medicare for a max of 5 sessions per year. Non referral clients are may be eligible to claim Private Health for the \$60 sessions.

A Doctor's referrals are generally faxed to the service provider, Como Podiatry, who contact the patient by phone and make an appointment.

### Social Work - Phone 9690 1320

### Speech Pathology - 9690 1320

These services are provided by WA Country Health Service and are free of charge. If you have any concerns about your own health or your child's health and development, please phone the relevant health professional to discuss your concerns.

Alternatively, you can speak to the Child Health or School Health Nurse, or your GP, to discuss your concerns and to determine the most appropriate referral.

*Avon & Central Primary Health Promoting Healthy Lifestyles*

## Vines Aesthetic Clinic

Rejuvenating and Invigorating



*Put the glow back in your skin*  
juvenating and invigorating

- ✓ Dermabrasion Therapy
- ✓ Led Therapy
- ✓ Injectables
- ✓ Derma Pen
- ✓ PRP



KARRADALE LIVESTOCK TRANSPORT  
YORK LIVESTOCK TRANSPORT  
ABN 64 054 007 721

We service Beverley, Brookton, York  
& surrounding districts

Available to transport Sheep & Cattle

No job too big or small

Support the local communities

Member of ALRTA

If you need stock moved, Peter would love to  
hear from you - 0428 481 281



Lady Day – **Patronal Festival of St Mary's Church, Beverley & the Chapel of St Mary & St George,**  
Guildford Grammar School.

Special Invitation to local Parishioners and Old Guildfordians and their families, and Guildford Grammar School Boarding Families of the Avon Valley and the Wheatbelt



*The Annunciation*, Leonardo da Vinci (1472–1475), Uffizi Gallery

Lady Day, which is known more formally as the Feast of the Annunciation of the Blessed Virgin Mary, occurs each year on the 25<sup>th</sup> March. It is the Dedication Festival of St Mary's Anglican Church, Beverley. It is also the Patronal Festival of Guildford Grammar School. In celebration of this Day upon which the Archangel Gabriel tells Mary she will bear a child, the Son of God, there will be two special services taking place in the Avon Valley. The first is on Friday, 25<sup>th</sup> March, commencing at 6.30 p.m. at Holy Trinity Church, York, while the second will be at 10.30 a.m. on Sunday, 27<sup>th</sup> **March at St Mary's Church, Beverley.** Old Guildfordians and members of present-day Guildford Grammar School boarding families, as well as all church goers, are most welcome to attend.

# MAUGERS WINDOW CLEANING

## Experienced, Reliable and Top-Quality Window Cleaners

Est. 2006

ABN 38 510 707 690

Residential - Commercial - Construction

### From Single Story Homes to Multi Level Buildings

We use the latest window cleaning technology from traditional squeegee to purified water fed pole systems

Licences: Working at Heights, EWP, White Card, High Risk Access

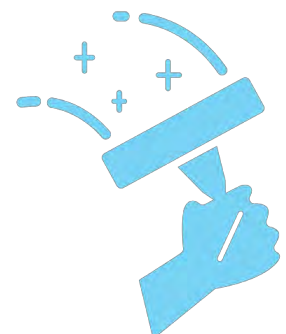
Current Public Liability Insurance

Servicing the Wheatbelt Region



Call 0417 411 573

[info@maugerswc.com.au](mailto:info@maugerswc.com.au)



Other Services: High Pressure Cleaning - Building Washdowns - Signage Cleaning -  
Gutter Cleaning - Solar Panel Cleaning - Flyscreen Replacement



# Improving your yield.

That's all we're interested in.



## Industry leading inoculant supplier

ALOSCA Technologies is an industry leader in Rhizobia inoculants for legumes supplied in a unique patented granule. It is the only inoculant that can be reliably used in dry sowing, top dressing or in contact with seed dressing or fertiliser that would otherwise be harmful to Rhizobia bacteria.

## Ideal for summer or early seeding

ALOSCA granules provide flexibility like no other product. Legumes can be sown with ALOSCA granules in dry conditions and remain in the soil for months until being activated by the same seasonal rain that germinates the crop.

## Don't just take our word for it.

Read what Nathan Garn from Wyalkatchem has to say. Nathan grows approximately 1,500ha of lupins annually.

*"I'm switching back to ALOSCA granules this season. I tried another product last season but it was a nightmare handling and questionable how well it would work in tough dry conditions. ALOSCA granules are far easier to handle and I can better trust they work in all situations."*

### Benefits at a glance:

- Specifically developed for Australian conditions and soils
- Can be dry sown, simple to apply and can be easily blended with fertilisers, seeds or a third box
- Can be used with seed dressings that are typically harmful to inoculants
- Can be stored for months in a dry area
- No need for slurries

### Our inoculants are suitable for these pasture and crop species:

- Lupin and Serradella
- Field Pea, Faba Bean and Vetch
- Chickpea
- Sub Clover
- Lucerne, Strand and Disc Medic
- Barrel and Burr Medic
- Biserrula



**Plus, early orders get \$50 cash-back per ton.**

Applicable to all invoiced tonnages received before January 31, 2022. To download your cash-back form, simply search 'cash back' on [alosca.com.au](http://alosca.com.au)

**Order through your local stockist and make sure you specify ALOSCA granules.**

For more information on how we can benefit your operation, please contact ALOSCA Technologies on (08) 6305 0123 or visit [alosca.com.au](http://alosca.com.au)



Better legume inoculation solutions for modern farming



## VINES MEDICAL TEAM

Dr Adebola (Andre ) Oladipo  
Dr Esther Oladipo  
Dr Alan Roustami  
Dr Jasmin Tan

Practice Nurse  
Vitou Norea Yem

ALLIED HEALTH TEAM  
Ryan Woodbury- Chiropractor  
Viney Lewis – Podiatrist  
Emma Kwok- Dietitian

OPENING TIME  
9am-5pm -Monday- Friday  
Saturday -9am-12noon.  
Phone-9646 1125 / 9468 3606

Online Appointments Now Available. Book at [www.vinesmedicalpractice.com](http://www.vinesmedicalpractice.com)

Address: 135 Vincent St, Beverley WA 6304



**BEVERLEY COMMUNITY GARDEN**

**FUNDRAISING RECYCLE PICKUP**



If you have any plastic or glass bottles or cans to be recycled, please consider donating them to your Community Garden.

We will pick them up from you if you ring us.

Betty 0400 569 971  
Maureen 0429 460 073  
Dorothy 0429 989 031.





Visit the  
**Dead Finish Museum**



**Oldest building in Beverley, built in 1872 as the "Wheatsheaf Inn".**

Corner of Great Southern Highway and Morrison Street, Beverley WA

**10 furnished rooms of memorabilia of Beverley town and district.  
Featuring the Beverley Room, a large collection of photos and history  
of local organisations, school photos and identities.**

ADMISSION ADULTS \$2

CHILDREN FREE WHEN ACCOMPANIED BY AN ADULT

Open 11.00am to 3.00pm Sundays or by appointment

Mid March to November.

Closed from December to early March.

Parking available on Morrison Street. AVMCF Venue.

Contact: [bhsdeadfinish@gmail.com](mailto:bhsdeadfinish@gmail.com)

0427 411 881 - Joy

9646 1149 - Maree

9646 1075 - Delys



**Be very historic**

**Beverley WA**  
Be very you

## LOOKING TO DOWNSIZE?

Hunt Road Village will soon have units available for rent. The waitlist is often long so we recommend registering your interest.

Located on Hunt Road, all units are 1 bedroom, 1 bathroom and each has its own parking space. The conditions of rental include: applicant must be 54 years of age and over, ability to care of yourself, a bond payment equivalent to 4 weeks rent and the first rental payment is payable in advance. Rent is currently \$150 per week and is reviewed annually.



Please email [admin@beverley.wa.gov.au](mailto:admin@beverley.wa.gov.au) or call into the Shire Office for an Application Form and full list of Terms and Conditions.



### OP SHOP

Open Fridays

11:00am - 2:30pm

#### March Roster

Mar 04

Glenda Burns, Helen Revill, Sera Minchin

Mar 05 (9am - noon)

Erica Murray, Janice Sherwood

Mar 11

Donna Williamson, Glenys Petchell, Roma Ladiges

Mar 18

Jan Howell, Pam Bradley, Val Lamb

Mar 19 (9am - Noon)

Donna Williamson, Jan Howell

Mar 25

Gina Adams, Chris Mann, Amanda McLean

#### April Roster

Apr 01

Leita Barrett-Lennard, Dedrie Gowland, Allsa Elston

Apr 02 (9am - Noon)

Glenys Lan, Janice Sherwood

Apr 08

Erica Murray, Dalene Davis, Pat Pepper

Apr 15

CLOSED- Good Friday

Apr 16 (9am - Noon)

Leita Barrett-Lennard, Ingrid Bell

Apr 25

Jo Sims, Gracie Courtney, Pet Bekkers

Apr 29

Sandy Shaw, Anne Jordanff, Allsa Elston

Apr 30 (9am - Noon)

Betty Wauchope, Sandy Shaw

Any further information, contact Glenys Lane on 0437 807454



# Shire of Beverley Shire Notices



## Annual General Meeting of Electors

Notice is hereby given that the Annual General Meeting of Electors for the 2020/21 financial year will be held in the Cornerstone Community Centre,  
141 Vincent Street, Beverley on TUESDAY, 5 APRIL 2022, commencing at 10:00am.

### Order of Business

1. Adoption of 2020/2021 Annual Report
2. General Business

As per Section 5.5 of the *Local Government Act 1995* copies of the 2020/2021 Annual Report are available from the Shire Administration Office, located at  
136 Vincent Street Beverley, during normal office hours or on the Shire website.

To enable staff time to adequately research answers to questions, it would be appreciated if such enquires could be lodged at the Shire Office at least seventy two (72) hours prior to the scheduled commencement of the meeting.

Following the Annual Electors meeting, a community consultation on the Avon River Concept plan will be presented.

STEPHEN P GOLLAN  
Chief Executive Officer

### *Land Administration Act 1997*

## Proposal to Dedicate a Road - Off Tip Road, Beverley

Notice is hereby given pursuant to Section 56 of the Land Administration Act, 1997, that the Shire of Beverley is considering to dedicate a section of land as public road.

Plans explaining the proposed road dedication are available for inspection at the Shire of Beverley, 136 Vincent Street Beverley, and will be open for inspection during office hours 8.30 am to 4.00 pm

Submissions on the road dedication may be made in writing and lodged with the undersigned within 35 days from the date of the publication of this notice. For further information contact Shire Planner, Stefan de Beer on 9646 1200 or [stefan.debeer@beverley.wa.gov.au](mailto:stefan.debeer@beverley.wa.gov.au)

Stephen Gollan  
Chief Executive Officer

## Reconciliation Action Plan

Council would like to extend an invitation to Indigenous Community members living (or with a strong connection) in Beverley to nominate for a working group to develop a Reconciliation Action Plan for the Shire of Beverley.

A Reconciliation Action Plan (RAP) is a strategic document that supports an organisation's business or strategic plan. It includes practical actions that will drive an organisation's contribution to reconciliation both internally and in the communities in which it operates.

It is expected that the working group will meet quarterly as a minimum during Shire Office hours, Monday to Friday, 8.30am – 5.00pm, attendance via electronic form (teams or zoom for example) is very acceptable. Nominations will close 31 March 2022.

For more information, please visit the Shire Office during office hours, 9646 1200 or [execassist@beverley.wa.gov.au](mailto:execassist@beverley.wa.gov.au)

Stephen Gollan  
Chief Executive Officer



# AVON RIVER PARK REDEVELOPMENT



## COMMUNITY CONSULTATION

Tuesday 5th April 2022 @ 11.30am  
Cornerstone Building Meeting Room

*Proposed concept designs will be presented  
by Sprout Studio*

Morning Tea Provided

Please RSVP your attendance to [projects@beverley.wa.gov.au](mailto:projects@beverley.wa.gov.au)  
or via the Shire Office on (08)9646 1200



Community Bank · York & Districts

# A better banking experience.

## Right on your doorstep

We deliver the products and technology you'd expect from a big bank, plus the personal service you wouldn't.

Feel good about who you bank with. Try Bendigo.

Find out more. Call 9641 2609 or search Bendigo Bank York.

Home loans

Accounts

Credit cards

Personal loans

Business

Insurance

Financial planning

Travel and International

Investing and Super

Agribusiness



 **Bendigo Bank**

\*All lending products are subject to the Bank's normal lending criteria. Terms, conditions, fees and charges apply and may be varied at any time. Bendigo and Adelaide Bank Limited ABN 11 068 049 178, AFSL/Australian Credit Licence 237879. A1455028 OUT\_2061738 11/05/2021



---

# BEVERLEY C.W.A



Back for another action-packed year !!!!!

Firstly, the ladies at the C.W.A would like to extend their condolences to the family of Janet Bawden. Janet became a member in 2018 and was president 2019 and 2020.

We held our AGM on February 16th at the C.W.A rooms. Marilyn Marchesi kindly donated her time to chair our meeting, so thank you for coming. We have elected a new committee for the year, so without further to do, here is the new committee.

President: Pat Hambly

Vice President: Sam Mearns

Secretary: Diane Colebrook

Treasurer: Wendy Hambly

International Officer: Vicki Primrose

Social Morning 2nd March

Come along for a cuppa and a laugh. Held at the C.W.A rooms at 9.30am. It is just a fun morning out.

Next C.W.A meeting: 16th March 9.30am morning tea 10.00am start

Have questions? Want information? The president, Pat Hambly, is the person to call on 08 9646 1481

Have a function? Need a place to hold it? Call 08 9646 1481 to book or just to find out more information about the rooms

Till next time stay safe and have fun !!!!!!!!

---

## BEVERLEY C.W.A HISTORY

Many people may not know but the Beverley Branch will celebrate it's 100th Birthday in 2025. What an amazing achievement. To celebrate and commemorate this milestone we would like to ask everyone if they have any photo's, stories and anything that relates to the Beverley branch and if they would allow us to have a copy. We are looking at putting together a commemorative book to celebrate the achievement's, stories of those who have been apart of the branch and what the branch has done for the community. Any contribution would be gratefully accepted.

For more information or questions, please ring on the above number or email Wendy at [bengalpaccas@gmail.com](mailto:bengalpaccas@gmail.com)



# BEVERLEY MEDICAL PRACTICE



Providing excellent quality health care to the community of Beverley and the surrounding areas for over 30yrs  
Located at the corner of John and Forrest streets (diagonally opposite the Beverley Hospital)

“Cullen House”

106 Forrest Street, PO Box 434

Beverley WA 6304

Ph: 08 9646 1241 Fax: 08 6117 0410

Email: [beverleymedical@westnet.com.au](mailto:beverleymedical@westnet.com.au)

*The Beverley  
Medical Practice  
Bulk Bills patients  
with a current  
Medicare card*

**OPENING HOURS**  
Monday to Friday  
9am to 1pm & 2pm to 5pm  
(Closed Sundays and Public holidays)

### **General Practitioners**

**Dr. Remi Adebayo, Dr. Olay Omoniyi, Dr. Sola Oyetunji,  
Dr. Tola Ogunleye**

**Practice Nurse – Lynley, Marceline, Kathleen**

**Monday to Friday 9am – 4pm**

BP checks, ECG, woman's health, pap smears, spirometry, vaccinations, counselling, My Health,  
Drivers and Health Assessments, wound care etc

### **Your friendly practice team**

Practice Manager – *Dawn*

Receptionist – *Kris, Mary, Emily, and Courtney*

### **Brookton Medical Practice now open Mon to Fri**

Saddleback Medical Centre 27 Whittington Street, Brookton 6306

**Ph: 08 9642 1485**

**Allied Health Services** - Diabetes Educator, Dietician, Physio, Podiatry, Chiro, Counselling etc.

### **Practice News!! COVID VACCINATION CLINICS Be prepared, get vaccinated**

**Call our friendly reception staff to book your 1<sup>st</sup>, 2<sup>nd</sup> or booster on 08 9646 1241**

*We would like to introduce the newest member of our team Dr Tola Ogunleye,  
she is specialising in women's health. Please book in for your women's health issues, Pap smears, etc.*

*We would like to congratulate Dr Remi Adebayo who has been providing quality medical services to rural Western Australia  
for over 20 years, Rural Health West are hosting an awards ceremony to acknowledge Medical Practitioners who have made  
the commitment to rural Practice*

The Beverley Medical Practice is committed to providing quality health services to Beverley and surrounding areas.

As part of our commitment to the community we support and assist up and coming medical health professionals. We have a number of student  
GP's attending clinics both onsite and virtually.

These Student GP's are from Notre Dame, UWA and Curtin University

If you are interested in assisting us by allowing one of our students to sit in on your consult or attend a virtual clinic over the phone please let our  
staff know.

**Skin Cancer Checks- The weather is warming up and its time to take extra care of your skin,  
book in for a skin check.**

**Care outside normal opening hours** - When the Beverley Medical Practice is closed you can always get  
medical attention by calling–Ready Care **1800 225 523** or Calling health direct 1800 222 222 or  
by attending the Beverley District Hospital, located in Sewell Street Beverley where experienced staff  
will triage the patient and contact the on-call Doctor

**For all Emergencies call 000**



## Australia Day 2022 Pool Party

Beverley pool delivered more than just patriotic love on Australia Day. During the official flag ceremony directly after the national anthem one of our locals, Shane Greenmount borrowed the microphone, got down on one knee, pulled a ring out of his shorts and formally proposed to Crystal Lee Slade in front of over 200 shocked party goers.

His secret was so tight not even Pool Manager Brad had any idea what was going on. He was seen running around like a headless chook looking for his phone to record the beautiful moment.

Perth DJ Crazy Craig said in his over 30 years of professional full time DJ Compere work all over the state it's only the second time this has happened during one of his gigs. Pool Manager Brad Miller was also over the moon later saying that he's asked around and there definitely is no memories of any other pool proposal since 1962.

Apart from that it was another fantastic Oz day. After a long run of 40+ degrees in a row the weather Gods smiled upon the day with a sunny mild 31 allowing the huge crowd to stay longer and enjoy the day in comfort. Thanks to all the helpers especially newlywed Monica Camenzuli for her continued hard work behind the scenes.

The Shire of Beverley with Contract Aquatic Services are committed to hosting this event for years to come.



## HARVEST BANS & FIRE CONTROL

*For notifications of Harvest Bans call 9646 0145—Harvest Ban Hotline*

### Fire Control Officers

Chief Fire Control Officer	Bill Cleland	9647 2054	0428 472 054
Deputy Chief Fire Control Officer	Deane Aynsley	9646 6246	0428 466 246

### Brigade

Central	Travis Boyle		0438 815 066
North East 1	Ben Murray	9646 0264	0429 460 264
South East 1	Brett Shaw		0427 481 028
South East	Adam Smith		0429 182 231
Avondale 1	Andrew Shaw	9648 1022	0428 481 022
Avondale	Justin Mann		0448 979 234
Dale-Kokeby 1	Robert Fisher	9647 2045	0427 472 045
Dale West 1	Paul Schilling	9647 1008	0427 158 908



*The Parish of Beverley – Brookton  
Service Times for March, 2022*

Wednesday, 2<sup>nd</sup> March  
Sunday, 6<sup>th</sup> March  
Wednesday, 9<sup>th</sup> March  
Sunday, 13<sup>th</sup> March  
Sunday, 20<sup>th</sup> March  
Sunday, 27<sup>th</sup> March

**St Mary's Church, Beverley**

8.00 p.m. Ash Wednesday with the Imposition of Ashes  
9.00 a.m. First Sunday in Lent - Morning Prayer  
6.30 p.m. Stations of the Cross  
10.30 a.m. Second Sunday in Lent - Eucharist  
9.00 a.m. Third Sunday in Lent - Morning Prayer  
10.30 a.m. Patronal Festival – Eucharist  
The Annunciation to the Blessed Virgin Mary

**St Paul's Church, Edward's Crossing**

Tuesday, 1<sup>st</sup> March  
Sunday, 6<sup>th</sup> March  
Sunday, 13<sup>th</sup> March  
Sunday, 20<sup>th</sup> March  
Wednesday, 23<sup>rd</sup> March  
Sunday, 27<sup>th</sup> March

**St Mark's Church, Brookton**

8.00 p.m. As Wednesday with the Imposition of Ashes  
8.30 a.m. First Sunday in Lent - Morning Prayer  
10.30 a.m. Second Sunday in Lent - Eucharist  
9.00 a.m. Third Sunday in Lent - Morning Prayer  
6.30 p.m. Stations of the Cross  
10.30 a.m. Refreshment Sunday – Eucharist

Sunday, 20<sup>th</sup> March

**St John's in the Wilderness, The Dale**

5.30 p.m. Third Sunday in Lent - Eucharist

**HOLY WEEK and EASTER SERVICES**

**Palm Sunday – 10th April**

8.30 a.m., Sunday, 10th April at Brookton  
10.30 a.m., Sunday, 10th April at Beverley

**Maundy Thursday – 12<sup>th</sup> & 14<sup>th</sup> April**

6.30 p.m., Tuesday, 12th April at Brookton  
6.30 p.m., Thursday, 14th April at Beverley

**Good Friday - 15<sup>th</sup> April**

8.30 a.m., Brookton  
10.30 a.m., Beverley

**Easter Services – 16<sup>th</sup> & 17<sup>th</sup> April**

8.00 p.m. Saturday, 16<sup>th</sup> April at Beverley  
5.30 p.m. Sunday, 17<sup>th</sup> April at Brookton

Priest-in-Charge: The Rev'd Canon Dr Philip Raymont  
Telephone: 0419177178  
Email: [praymont@perth.anglican.org](mailto:praymont@perth.anglican.org)  
Postal Address: P.O. Box 180, York, 6302  
Residential Address: 75 Suburban Road, York

Church Correspondence including St Mary's Society: PO Box 292, Beverley. 6304  
Church Website: [www.beverleybrooktonanglicanparish.org](http://www.beverleybrooktonanglicanparish.org)





## THE ROOF & WALL DOCTOR *Is Back In Town!!*

Like to have your roof replaced with new Long lengths of Zinalume or Colorbond? How about new gutters & downpipes, Insulation or a Skylight?

**WE REMOVE OLD TILES, IRON, ASBESTOS & DECRAMASTIC**

**WE SUPPLY & FIT NEW:-**

- ✓ Zinalume & Colorbond
- ✓ Gutters & Downpipes
- ✓ Insulation & Skylights

ALL RE-ROOFING WORKS IN WA, IN EXCESS OF \$20,000 (inc GST), CAN ONLY BE CARRIED OUT BY A LICENCED & REGISTERED BUILDING COMPANY

**HERITAGE BUILDINGS RESTORED  
RESTORATION OF FRETTING BRICK & STONE WALLS**

All quotes carried out on-site, by the Doc himself. We service all country areas. Get your free quote now, while we are in your area.

### **THE ROOF & WALL DOCTOR**

16 Essex Street FREMANTLE W A 6160

Phone:- 9430 6553

**FULLY GUARANTEED & FULLY INSURED**

Registered with The Builders Registration Board #13172



**OWNED & OPERATED BY  
THE SAME FAMILY  
OWNERS FOR OVER 28 YRS**



WorkSafe Asbestos Removal Licence No:- WR775

Website [www.roofandwalldoc.com.au](http://www.roofandwalldoc.com.au)

Email:- [info@roofandwalldoc.com.au](mailto:info@roofandwalldoc.com.au)

As Seen on GWN & Channel 7 "Home in WA"

**ROYAL ANTEDILUVIAN ORDER OF  
BUFFALOES**



**GLE (Inc.)  
QUAIRADING BEVERLEY No. 163**

**We meet the first Wednesday of every month  
at the Masonic Lodge, Hunt Road, Beverley**

**The objects of our order are Philanthropy  
and Good Fellowship**

**For more information contact  
Tom 0419 945 240**



**THE RELIGIOUS  
SOCIETY OF FRIENDS  
(QUAKERS)**

**Beverley Friends Meeting  
Old Catholic School Rooms  
Dempster Street**

**Meeting for Worship  
SUNDAY at 10:30am**

**For more information & enquiries phone  
0408 090 345**

**BEVERLEY  
REAL LIFE  
CHURCH**



*Living life with  
Christ*

*All Welcome  
Every Sunday  
10 am*

**50 Hunt Road, Beverley**



**CATHOLIC CHURCH**

**Service in Beverley  
8am; every Sunday  
Adoration, Rosary & Mass  
2.30pm; First Friday of the month; followed by a  
cuppa**

**at Beverley Sacred Heart Church, Lukin St, Beverley**



## Beverley Bowling Club News

### Pennant News February Update

#### *Ladies Pennants.*

Round 8 Cunderdin 4 defeated Beverley 0

Round 9 Beverley 0 defeated by Goomalling 4

Round 10 Beverley 3 defeated Toodyay/Dowerin 1

The Ladies sit 7th on the ladder on 20 points and with just one round to go look unlikely to make the finals.

#### *Mens 1st Division*

The 1st Division men have had a real tussle this year and sit 6th on the ladder with 42 points. 3.5 points outside the top Four, with 3 games to go they are still a chance to make the top four and thus into the Finals.

Round 10 Beverley 8 defeated Meckering 0

Round 11 Toodyay 7.5 defeated Beverley 0.5

#### *Mens 2nd Division*

Mens 2nd Division men still assisted by some of our Ladies sit atop of the ladder for now. However, it is tight with only a few points separating 1st and 3rd on the ladder with three game to play before the finals.

Round 10 Beverley Bye

Round 11 No play throughout the 2nd Division due Heat Rule

Round 12 Beverley 7 defeated York 1

### Club News.

During February the Beverley Bowling Club held the Beverley Transport Championship Pairs over two days.

The Winners of the Championship Pairs Plate were Peter Smith and Mike Carthew from Reggie Behn and Jeff Hoey

The Championship Pairs winners in a closely fought final were Peter Jamison and Matthew Norman from David Bell and Geoff Rayner.

The Beverley Bowling Club thanks Beverley Transport for their continued support.

Peter Fleay represented the Avon Valley Zone in the Inter Zone competition held in Busselton on 5/6 February and was successful in being selected to play in the Country All Stars team to play against the State team at Osborne Park on Thursday March 3.



Left: Club Pairs  
Champions Matthew  
Norman and Peter  
Jamieson with Club  
Caption Daniel Fleay

Right: Champion Pairs  
Runners up Dave Bell  
and Geoff Rayner with  
Club Captain Daniel  
Fleay





# Beverley District High School

## Independent Public School

*Successful, Supportive, Sustainable*

**For more information about the school, visit our website and Facebook page!**

**It's been a great start to 2022 at BDHS.....**

We have had a great start to 2022! Our Kindy students have entered the world of BDHS and have had a wonderful start with Mrs Bassett, Mrs Higgins, Mrs Tilley, Miss Nixon and Miss Fitzgerald. They have been keeping busy with our combined class of Kindy and Pre Primary and they are all settling into their new routines very well.

Our Primary students have launched back into learning with enthusiasm this year and are getting to know their new classrooms and teachers. We have been so impressed with their approach to learning and in the way they have settled into their new class routines!

Our Secondary students have been working very hard in the classroom as they adapt to their new routines and attending online SIDE Webex classes. The students are engaged and thriving on the curriculum delivered thus far.

### Historical Tour of Beverley

Our students have had a wonderful start to the year, and had an amazing opportunity to go on a Historical Tour of Beverley. On Wednesday 16th and Thursday 17th of February, the Year 1 – 10 students met with members of the Historical Society who shared some amazing and interesting stories about the history of Beverley. The students also got to mail their postcards which they have been working on with the Artist in Residence Kaitlyn Elsegood. Thank you to Bruce and Chris Mann, Jenny Broun, Bruce Denny, Glenys Petchell and the wonderful Dead Finish Museum volunteers for your stories and amazing knowledge of our wonderful town. A big thank you to Kaitlyn, for organising this very informative excursion.







## Upcoming Events

Pupil Free Day – Monday 7<sup>th</sup> March (Labour Day Holiday)

Faction Swimming Carnival Yr 3 -10 – Friday 11<sup>th</sup> March TBC

Interschool Swimming Carnival (Brookton) – Friday 25<sup>th</sup> March TBC



### Championship Singles

A smaller than usual group played off in a round robin tournament on Sunday 20 February. Thankfully it was perhaps the 'coolest' day we had in a while, but it was still

very warm. Making it to the finals in the Mens are Mitchell Ashworth and Brett Shaw. The Ladies will be decided between Carissa Shaw and Annie Budiselik. The best of 3 set finals will be scheduled in the coming weeks. Thank you to Paul and Deb Roediger for their sponsorship of the Championship event

### March Fixtures

<b>SUN</b>	<b>6<sup>th</sup> Mar</b>	<b>Can or Bottle Tennis Match - Social Tennis</b>	<b>Play along for your favourite can or bottle - winners take all - Labour Day Long Weekend</b>
<b>SUN</b>	<b>13<sup>th</sup> Mar</b>	<b>Sunday Social Tennis</b>	
<b>SUN</b>	<b>20<sup>th</sup> Mar</b>	<b>CHAMPIONSHIP Doubles Sponsored by D &amp; P Roediger</b>	<b>Names Due Thursday 17th March by 6pm Nibbles &amp; Drinks</b>
<b>SUN</b>	<b>27<sup>th</sup> Mar</b>	<b>Sunday Social Tennis</b>	

### Easter 2022

Entries are now open! Find your partners and get ready to fly in to another Eggcellent Easter Tournament.

Please see the flyer for full details of entries, conditions, Sunday Night Sundowner and our fantastic Sponsors.

See you on the courts!

## BEVERLEY NETBALL CLUB

Hope everyone had a Merry Christmas, a very happy new year and an awesome off season. It's that time of year to contemplate what sport to play this year and when to start training.

Training will start on *Wednesday 23<sup>rd</sup> February at 6:30pm on the Town oval*, with a 6wk fitness program by the Active Farmers Beverley, we hope to see all interested netballers join in.

If your interested in playing netball this year or would like some more information please contact Jo Copping on 0438 972 335.

Keep an eye out for Fast5 information, coming out shortly.

We are hoping to send a senior team into the Northam Netball association competition (we are hoping 3rd time lucky, we made it to the preliminary final last year so surely we will be in the grand final this year).

We are also considering entering a junior team in the Northam competition for 11-17yr olds. If you have a child that is interested please contact Cara Hammond on 0400 762 889.

Photo: "who's interested in playing netball?"





101.3 FM  
VOICE OF THE AVON LOCAL RADIO  
PROGRAM



SUNDAY

6.00 – 10.00 Sunday Breakfast - Terry  
10.00 – 1.00 Easy Sunday - Denni

MONDAY

6.00 – 10.00 Monday Breakfast - Bob  
10.00 – 2.00 Monday with Lesley-Ann  
2.00 – 4.00 **What's New In Country** - John  
4.00 – 7.00 Celtic Note - Joe  
7.00 – 10.00 Classical Sounds - Chris

TUESDAY

6.00 – 10.00 Tuesday Breakfast - Bob  
10.00 – 2.00 Country Roads - Joe  
2.00 – 5.00 **Rockin' on the Avon** - Denni  
5.00 – 7.00 Turn it up Tuesday – Michael

WEDNESDAY

6.00 – 9.00 Sunny Side Up - George  
9.00 – 1.00 A Little Bit of Everything – Joe-  
1.00 – 4.00 Potpourri - Peter  
4.00 – 6.00 **John's Jazz Show** - John  
6.00 – 9.00 Back to the Future – Frank

THURSDAY

6.00 – 9.00 Thursday Morning - Joe  
9.00 – 12.00 Solid Gold Thursday - Frenchy  
12.00 – 3.00 Kaleidoscope – Chris  
3.00 – 6.00 Drive – Graham  
6.00 – 9.00 Tonking Along - Tonks

FRIDAY

6.00 – 10.00 Friday Breakfast - Bob  
12.00 – 4.00 **Michael's Mix Up** - Michael  
4.00 – 8.00 Friday Night Live - Terry

SATURDAY

6.00 - 9.00 Saturday Breakfast – Frenchy (TFN)  
9.00 – 12.00 Spirit of the Music - George  
12.00 – 2.00 Country Trax - Haydn  
2.00 – 4.00 Saturday Mix – Graham  
4.00 - 6.00 My Kind of Music – Lesley-Ann

Phone: Studios 9641 2422

Sponsorship: 0408 502 711

E-mail: [radio6ycr@hotmail.com](mailto:radio6ycr@hotmail.com)

Facebook

Voice of the Avon 101.3 FM – 6YCR  
(with live streaming)

Website

[voiceoftheavon.org.au](http://voiceoftheavon.org.au)

live streaming- Voice of the Avon 101.3 FM

82 hours of local presenters each week  
Effective 13 October 2021

*Changes may be made without notice*

## Goodbye & Thanks

### Reverie Of The Past Two Decades

It started out on Boxing Day while talking to a friend,  
I said I expected to move to the country during the next year,  
Not too far from the city, I just wasn't sure where.  
He said, "You know where – between Brookton and Northam."  
It then became clear that he was right, so the search began.

A week later an excursion with another friend, picnic lunch included.  
We set off to explore some potential properties we had seen advertised.  
If I am totally honest, I did not know what I was looking for in a house.  
I was content with the defined area we were exploring,  
I just knew I would recognise my house when I saw it.

First viewed an old garage in North Dale, but no prospect of work there.  
So, on to Brookton, not impressed with this town in early January heat.  
Driving to Beverley we felt a change in the energy between the two towns.

I now recognise this change as being around the Yenyenning Road-  
Kokeby stretch.  
Where County Peak seems to overlook a meeting ground of ancient times.

Beverley was quiet but displayed such an evident sense of pride.  
Flowers blooming in baskets and planters in the main street.  
Welcoming service in the shops open in summer's quiet time.  
Not clear that there was more across the bridge, so started off to York.  
Then we saw St Mary's, "OO-ed" then a stone house with "For Sale" sign.

I said I would know it – and there it was – looking a little worse for wear.  
The agent showed us through, no keys so remove a laundry louvre.  
My friend thought the house was likely to collapse, I was just excited.  
Structural Engineer declared it safe, and repairs would be effective.  
So, a deal was struck, the house gave thanks someone "was going to love me".

It took a few months to sort out, but May saw my name on the mortgage.  
Mother's Day gift from the house was a Mrs McCarthy rose, 'It looked like it was dead, but in fact just totally neglected.  
A good prune and she sprang back to vigorous life.  
For the past twenty years, she has gifted me her season of joy.

Just as with my Mrs McCarthy rose, as I have put in, I have received.  
Beverley has been a place which has given me many gifts.  
Reconnecting with nature through my flower essences.  
Re-discovering a love of photography and the colours of the country.  
Allowing myself to pen verse with no burden of expected excellence.

A chance to once again be part of a small but vibrant community.  
A chance to be of service to a district through the organisations like RSL.  
Lots of acquaintances along with those close friends.  
Life in this community is modelled on a recipe for living;  
"You only received benefits equivalent to your contribution."

I do not see myself growing old in this community.  
Family ties call me to move once more when Fate decrees.  
To Beverley, I will always be grateful for helping me find me.  
When the nest empties and life's direction must change.  
There has been no better place to be. Thank-you Beverley.

Irene Oram  
17 June 2021

---

## Warrior Wellbeing Article

# Decision Making Under Pressure

We make decisions every single day, sometimes without even knowing it, these are often the easy and simple decisions that are part of our routine of daily life. Decisions that are of a more complex nature, involve more risk, or a decision that must be made under challenging circumstances can certainly cause us and those around us a bit of stress ... this is normal!

Being in a position to make a decision is a good thing. For many people making decisions may not be an issue; I'm sure we have all met someone who seems confident, sure of themselves and likes to be in control and take charge of situations and the decisions that go with it. While others may be a little more indecisive, seek advice or approval first, or maybe just need a little more time to think things through. Regardless of which end of the scale we are at, it is a positive to be able to make decisions, as this means at least two things; 1. We are in a position to have a say, make a choice and be in control; 2. We are not procrastinating.

Why do some of us struggle with decision making and what factors can impact this? There are many things at play that can influence and impact on our decision making and listed below are a few examples:

- **Uncertainty:** No matter who we are or what we do, none of us know which way the dice will roll. None of us want to make the wrong decision, but sometimes this cannot be avoided (weather, fires, floods, droughts, bureaucracy);
- **Complexity:** This can depend on the nature of our business or situation, i.e. farming involves many different interrelated factors that quite often need to be considered (financial, weather, equipment, labour, cost/price);
- **Consequences:** Something we have all tasted at one stage or another, both good and bad. We still need to consider the consequences - Risk vs Reward;
- **Alternatives:** Have we considered them? Where do we get our information from to inform us of all available options?
- **Interpersonal issues:** Who else is affected by our decisions, how will others react? What frame of mind are we in when making decisions? What else do we have going on in our lives, what are our priorities?

So, what can we do to help this process?

- Try and create a positive space;
- Remember the 6 Ps - Prior Planning Prevents Piss Poor Performance;
- Be realistic and look at all the factors impacting on our circumstance;
- **The grass is not always greener. Don't be influenced by what others are doing or will think;**
- Stick to a plan/process that you are comfortable with.

It's important to remember that when we make a decision it's often based on the best information we have at the current time. Letting go of making a wrong decision is vital. This can be hard for some people however over-thinking the *could of/should of/would of* does not get us anywhere.

*Stay committed to your decisions but stay flexible with your approach.*

The Team  
The Regional Men's Health Initiative  
delivered by Wheatbelt Men's Health (Inc.)  
PO Box 768, Northam WA 6401  
Tel: (08) 9690 2277  
[menshealth@4blokes.com.au](mailto:menshealth@4blokes.com.au)  
[www.regionalmenshealth.com.au](http://www.regionalmenshealth.com.au)





---

## Beverley Voluntary Community Services

formally known as BCS since 1985.

Since the COVID epidemic the world has changed including you laws such as mandatory assault, cyber bullying, cruelty to animals, mobile phone threats, and family court law. In the last 35 years our volunteers have been the background past and present of helping members of the Beverley community on an average of 200 matters per year. this help comes in many forms I for example government ministers and local MP's seeking legal aid for needy people, helping with paperwork, and speaking under authority to various law firms.

BVCS normally speak through Mal Roberts and is referred to various government bodies to seek help to get housing, food parcels, urgent housing bond etc. we work in with NGDS.

Though Mal follows up with phone calls and letters, etc. to the Ministers of Housing, Local MP's, Minister of Communication re various effects the 13 Black Spots in Beverley have on all mobiles, NBN and computer connections.

Some info on laws: Animal Cruelty, Assault on an Animal, Cruelty to Animals, Assault and Aggravated Assault carry penalties of up to 5 years in Prison and/or a \$60,000 fine.

Assault: If a person feels threatened and fear of assault, whether it is a biro, threatening to cause bodily harm. You could end up with a VRO Police Order. A screwdriver could also be considered a concealed weapon. Be careful a biro could also be treated as a weapon. Please understand that the laws can be used in various ways.

The days are long gone when you can go shaking your finger close to their face. If you are seen kicking a dog or cat and neighbours complain – **you won't be boasting that you kicked a neighbour's cat. RSPCA will also follow it up.** Remember all such criminal act will be evidence-based proof.

**Job Seeker's New Rules by Centrelink: Every jobseeker must make contact with ID advertised positions and report to the Employment Service.** If not compiled with your Centrelink payment will be stopped. I wrote to Hon. Rick Wilson last month as many jobseekers are very concerned that they could end up homeless. Up to date M.P. Wilson our local M.P. did not have the courtesy to respond; my next letter will be to the P.M.

Statistics tell us that the rich are getting richer, and the poor are getting poorer. I checked Facebook facts last week and according to the Salvation Army, as of 10.02.2022 there are 3.24 million Australians living below the poverty line. **12,600 homeless, including women and children in cars and women's toilets (at night).**

Legal Fees: Please remember to check with Law Firms about their fees and charges. Estates – upon value \$30 - \$60,000 upwards. Check with Individual Law firms – some have fixed court fees, hourly fees, consultation fees, etc. Some hourly rates range from \$300 to \$600 for legal advice only.

Elder abuse is becoming more common. Emotional threats to put family members in nursing homes. Contacts Elder Abuse Commission. BVCS normally refers residents to Citizen Advice because Legal Aid is almost impossible to get them help. Always get sound legal advice. If threats are being received online or via mobile phone, you can send evidence to the new Online Abuse safety commission.

A case in point; the defendant broke his back, lucky to be alive, spent \$90,000 from his superannuation, lost 2 properties, was in hospital for 4 years, spent all his savings, super and sold his properties to pay his legal fees. We arranged for him to get a Pro Bono Lawyer and Centrelink benefits. He was living in a farm shed and his marriage had broken down – he had lost the lot. Now, finally, matters have been mutually settled. Always try to settle property mutually. Family court and divorce documents all need to be witnessed by a Justice of the Peace. Get an **independent JP (not a friend), show your driver's licence while signing any documents and current home address.** Most law firms are suggesting photo ID, this also applies to other court documents – seek advice.

From the Individual Courts to the Justice of the Peace, so to Avoid witnessing a friends will or family court documents – **the rule is: stay at arm's length.**

Many thanks to Mr Steve Gollan for helping witnessing hundreds of documents with me. From time to time, we had to do home visits to witness documents. You always made yourself available for us. I speak for many with one voice, and **we say a big thank you "Mr Steve"** – a good community spirited person in our Beverley town.

Special thanks to our Secretary Verna for all the hundreds of phone calls during my illness to lawyers, government ministers, courts, and hospitals.

**Marriage and partnership breakups; from my 35 plus years' experience, there are no winners when it comes to family court matters, property settlement, children's custody and visitation rights etc, lawyers' fees, court fees. A good rule of thumb is to always try to settle matters mutually and take a witness with you when making contact to get an agreement or documents signed.** Be civil, stay peaceful, threats of shaking fists or fingers which make the other party feel fear for their safety can be seen as assault, which can get the police and a VRO. Involve the police and criminal courts, beware, even threatening someone with a biro can turn very ugly.

M. Roberts – President

S. Seddon – Secretary

V. McKelvie – Joint Secretary



# BEVERLEY REDBACKS HOCKEY CLUB



## 2022 Hockey Season

The Beverley Redbacks are excited to prepare for another season of Hockey! The year is already shaping up to be one to remember, with plenty of new players and even our first juniors hockey team taking to the field. At this stage fixtured games are likely to start in the last weekend of April so keep a eye out on our Facebook page for the finalised fixtures.

## Expressions of Interest

*Are you looking for a bit of fun and fresh air?* The senior Beverley Redbacks hockey team are a fantastic bunch of woman who support each other and share a love of hockey. All players are welcome regardless of experience or skill level. If you are interested in finding out what we're all about contact us or drop by one of our evening trainings In early April. We are now accepting player nominations from both new and existing members so if you are keen to play contact us for a nomination form.

*New Juniors Hockey team* This year we are so excited to be running our very first Junior Redbacks hockey team. The format of the season will depend entirely on the number of kids who sign up but no matter the numbers we are committed to providing an awesome program for our upcoming stars. For more information please contact our Juniors coordinator, Kelly Mann (0428779234), or our team secretary using the contacts below.

*Coach Wanted* We are now accepting *Expressions of Interest for Team Coach Role*. If you are an experienced hockey player or team coach and are interested in the position please call or email our secretary by the 15<sup>th</sup> of March.

## Events

Fixtured games are expected to start the last weekend of April

Training is scheduled to begin in the first week of April at the Beverley oval and we will be taking a team vote for which day of the week suits best.

The first training of each month we will host a *team dinner* at the Beverley tavern as a social event.

Thank you to the providers of the active farmers program who have thoughtfully organised a 6 week preseason fitness program for the Beverley winter sports teams.

Beverley Redbacks Hockey Club Contact Details

Facebook: Beverley Redbacks Hockey Club

Mobile: 0447 811 267 Email: [beverleyhockey@live.com.au](mailto:beverleyhockey@live.com.au)



## BEVERLEY JUNIOR SPORT

Beverley junior cricket team have been having some great games against Brookton.

Our own Noah Shaw won the Triple M junior player of the week medal and has proven why he is a deserving winner by showing his team mates his little tricks and taking multiple wickets week after week.

Beverley Junior Sporting Council have started to negotiate the junior football and netball fixtures so keep a look out for more information coming soon.

Coordinators for 2022 are football: Brett Shaw and netball: Sharlee Higgins.





# BEVERLEY AMATEUR SWIMMING CLUB

The School holidays saw a lot of children pass stage 3 during Vac Swim and we have had several new members. We had 3 representatives swim at the Northam Open on 6<sup>th</sup> February which saw a few more personal best times. The York Open and Quairading swim meet are coming up on 26<sup>th</sup> February and Beverley have a few representatives at both events. The Great Southern Region Swimming Championship was due to take place in Corrigin on the 12<sup>th</sup> of February however due to fires in the town it has been postponed.

Friday 18<sup>th</sup> February was the clubs 2<sup>nd</sup> Club Carnival and burger night. Thanks to all the volunteers that made the night a huge success and congratulations to the children, some swimming new distances.

Upcoming club events:

4<sup>th</sup> March: 3<sup>rd</sup> Club Carnival

18<sup>th</sup> March: Club Championships

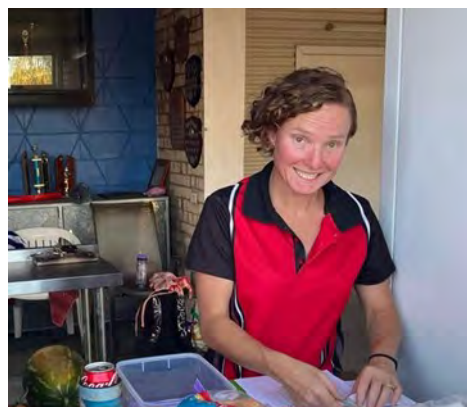
25<sup>th</sup> March: windup presentations and AGM.



Ruth Elsegood, Amelia Copping and Alec Murray representing Beverley in the Northam Open. Zara Copping supporting.



Hollie Smith busy marshalling the kids



Our President Amanda Farr hard at work getting the burgers ready for our burger night



Timers making sure they get the correct time





Beverley Golf Club  
Forrest Street,  
Beverley WA 6304  
P: 08 9646 1090  
E: bevgolf@wn.com.au

President Report 2022 AGM on 1<sup>st</sup> February 2022

Thank you for your attendance tonight for the Beverley Golf Club 2022 Annual General Meeting.

Whilst the world and in particular WA navigate the current COVID world we live in. The Beverley Golf Club has gone from strength to strength. And this in large part because of our fantastic committee members, volunteers and members.

2021 saw a return to somewhat normality. We were able to host all our events during the year with no major restrictions. This was a great distraction from what was occurring around the world and from the tough restrictions put in place in 2020.

As we look towards 2022, I cannot say with any certainty of what will happen. I am unsure of what restrictions will be put in place during the year that may affect the golf club. It appears as though we may very well be changing direction at any given notice and could be in for a challenging year.

Which is why as a golf club we need to be fluid and be able to adapt to whatever gets thrown at us. I know with the people we have involved with the club that we will embrace these challenges and thrive.

Already current restrictions as of January 31 have already tested the club's resilience and ability to manage the governments COVID requirements going forward. As of that date any person who has not had 2 vaccination shots and deemed (fully vaccinated) will not be allowed in the golf club. This is because the golf club has a club licence and is bound by the hospitality rules every other licenced venue is bound by.

This does not mean you can't play golf. You can still play community sport without vaccination and the club will manage this to ensure everyone that wants to play golf will be allowed to play golf. The latest advice that has been received from Golf WA is that those not fully vaccinated can enter the golf club to pay their green fees for the day, but immediately leave the building once that has been completed.

The new mandate will see responsible persons at the club request proof of vaccination. Whilst I envisage that initial process of this to be cumbersome, I expect as the months roll on that this system will be relatively easy and quick process. I urge every member to ensure they have their proof of vaccination available on their first visit to the club.

Last year saw the return of the Old Boys dinner. An event that has occurred at the club for a very long time and will continue this year with the event being locked in for 1<sup>st</sup> April. Thank you to Jane Murray for co-ordinating the event and all the helpers.

After a delay of a year the Ladies Avon Valley Championships were held over 3 days. What a fantastic event. It was well attended by golfers from near and far. The ladies were treated to fantastic weather and plenty of water.

I want to acknowledge and thank our club captain Sera Minchin and vice-captain Jane Murray who put in a mountain of work in making the event a success. You both did an amazing job. As did all the volunteers and helpers over the weekend. Thank you for all your efforts to ensure that the the championships were a very successfully ran event.

During last year the club lost a member. Eddie Willis lost his battle with cancer. He was a fantastic member of the club and helped out around the club right up until his passing. He will be and is missed around the club.

At last year's AGM, the Course Committee was created. Terry Woods, Fred Sing and Mike Carthew were on the committee last year. And if the condition of the course was anything to go by, I think they did a magnificent job.

Significant work was completed on the course last year. There was plenty of pruning of trees, new drains, aerating the fairways, spraying of Guildford grass, oiling of greens to mention a few things. A lot of hours were put in by these 3.



---

Last year also saw a bit more rain as usual. This had its own problems including the flooding of green on hole 6 and the tee box of hole 4. The team work of everyone at the club to come together and help when it was needed was unbelievable and fantastic.

I know we had a course committee, but the ability of everyone involved the golf club to help when needed is what makes a club and what makes a successful club. So, thank you to the course committee on a year of great development for the course and thank you to all those that helped during the year. Your assistance is very much appreciated.

The course would not look as it did without the machinery to maintain it. As you know from last year the club purchased a mower for the fairways to replace the chamberlain. A great addition that was supplemented by the purchase of another ride on mower that is used for the edges of the fairway and the rough. That mower is now China's personal mower.

A massive thank you to the Shire of Beverley who once again approved a community grant for the club to assist with purchasing the mower. Over the last few years, the Shire has continued with their commitment to local businesses and sporting clubs. It is very much appreciated.

Also a big thank you to the Beverley Shire, John Shires, Garry Miller, Emfert, Damien Murray, Matt McLean, Geoff Bremner, Fred Woods for their donation of equipment or supplies during the year to help with the course.

The purchases of the new machinery have seen us turn over the old machinery where the chamberlain and small ride on mower have been sold and the new machinery purchased. The ability to upgrade the machinery will be of great benefit going forward.

Whilst the course was receiving a long overdue facelift, we did not neglect the clubhouse.

On top of the new air conditioners installed last year, the club received a face lift with new paint on the interior of the club house and we are currently completing the exterior painting of the club house.

Only recently the club had installed new blinds. These are a great addition and modernises the clubhouse.

The golf club is in a great position financially and while we have to be frugal and careful with our spending, we also need to continue to upgrade the clubhouse and improve the course.

So, as we start a new year, I want to thank all those that were a part of a successful 2021.

Thank you to the Mens and Ladies Captains Mark Kont and Sera Minchin. I know both of you are not seeking to continue in the role, so I do want to commend you two for all that you have done for the club.

**Mark, you have worked tirelessly whilst captain, during your time as captain we have seen men's golf go from a Saturday only to now scroungers on Wednesday and Friday and also Sunday golf during summer. You took on more than what a captain should have to take on, but you did it for the best interest of the club. Everything you have done was to make the club great and I think you have achieved that.**

**Sera you gave your heart and soul to the position. You're a passionate person who wears her heart on her sleeve which sometimes was at the detriment of your personal health. You successfully ran the Avon Valley Championships and that is an achievement you can be very proud of.**

Captain can be a thankless job with many critics. You two can be proud of what you have achieved and you leave the golf club in that role in a better position. I hope that the new captains follow in your footsteps and put the club first before themselves like you two have done over many years.

This year has seen an increase in the use of the clubhouse, whether that is from more golf, or the addition of darts and other functions and events. With this increase puts a heavy strain on the club to ensure that we can open for all these events.

Ken Bradley has done an outstanding job as bar manager and his tireless work has been a major reason the club has thrived. Thank you for all your countless hours at the club and all your hard work. Thank you also to Pam Bradley who is the caterer extraordinaire. Your commitment to the club and co-ordinating and catering for nearly all the functions is very appreciated by everyone. Your work at the club has seen us host functions the club would never have held in previous years and is another reason the club finds itself in a very financial situation.

I hope you both enjoy your caravan travels and I'll make sure we have all the functions booked for when you're back in Beverley.

Thank you to all the members that have helped out during the year either behind the bar or in the kitchen either assisting Pam or catering for other functions. The club would not be able to host these functions if it wasn't for the volunteers and it is very much appreciated.

---

I want to thank Maxine Watts who had been employed as the cleaner over the last few years. The workload has picked up over the last year as the club is utilised more.

Thank you to our members who keep coming back week after week to play golf. You're the reason that this club is successful due to your commitment to the club.

I am extremely thankful for our sponsors who continue year after year to sponsor our fantastic club. Your sponsorship is one of the reasons that we have been successful and I do hope that you can continue your sponsorship this year.

Congratulations to Maxine Watts and Darrell Hagan who won the club championships. Also, well done to Chris Lawlor for the winning the plate final. Thank you to all those who participated in those championships and also other events during the year.

Next year I hope that as a club we can start to attend other clubs events in greater numbers. Travelling in numbers to other clubs will be a great way to strengthen friendships and hopefully that will see other clubs reciprocate when it comes to our events.

Thank you to John Donovan for being the club patron for 2021 and hopefully will continue on in that role for 2022.

Thank you to everyone on the committee. Your commitment during the year has been outstanding and much appreciated. I am extremely proud of everyone involved in the golf club. Whilst not everyone agrees eye to eye about all decisions made. Everyone has made decisions in what is the best interests of the club and that is why we find ourselves in a very strong position going forward.

I have no doubt that the new committee will continue that same commitment towards the club and 2022 will be even more successful.

I wish everyone best wishes for 2022 and may you hit the ball straight.

Darrell Hagan  
President

#### 2022 Committee Members

<b>President</b>	<b>Darrell Hagan</b>
<b>Vice President</b>	<b>Not filled</b>
<b>Secretary</b>	<b>Sandy Woods</b>
<b>Treasurer</b>	<b>Stephen Gollan</b>
<b>Men's Captain</b>	<b>Marc Edwards</b>
<b>Ladies Captain</b>	<b>Jane Murray</b>
<b>Bar Manager</b>	<b>Chris Lawlor</b>
<b>Committee</b>	<b>Chris Pepper, Marg Peck, Phill Bateman, Valda Morton, Mark Bickley</b>

Valda Morton and Mark Bickley are also Vice-Captain's for the year and John Donovan has accepted to continue to be club Patron for 2022. The course committee of Terry Woods, Fred Sing and Mike Carthew continue with the excellent work they have done on the course.

#### 2022 Golf Fixtures

No dates have been set by the golf club for this year. We do hope that we can finalise those dates by late March to very early April. It is envisaged that the golf season will start mid-April just prior to Easter and Anzac.

If you want to get some practice in, then come on down to Scroungers golf on Wednesday and Friday which is 6 holes of golf that starts at 4.30pm.

There is also Sunday golf which starts at 7.00am and is either 9 holes or 18 holes depending on the weather.



---

There is also Sunday golf which starts at 7.00am and is either 9 holes or 18 holes depending on the weather.

#### COVID REQUIREMENTS

At present the golfclub is subject to the below government requirements. Some of these requirements may be strengthened or removed. As we receive further updates the golf club will pass that information on as soon as possible.

- Face mask to be worn inside the clubhouse at all times
- Sign in on the contact register

Proof of Vaccination to come inside clubhouse, unless using toilet facility or booking for golf round.

It is pleasing that none of these restrictions prevent anyone coming to the club and playing golf and I encourage everyone to come on

---



Saturday 24th September 2022

# *Spring Back to Beverley Markets*

## *Stall Holders Wanted!*

Are you interested in showcasing your items or products?

Maybe you would like to extend your target audience.

Then get in touch and book a stall at the  
2022 Spring Back to Beverley Markets.

Booking forms and information to be obtained by contacting  
[projects@beverley.wa.gov.au](mailto:projects@beverley.wa.gov.au)



**Be**verley Western Australia  
Be very you

# LOCAL CLUB/GROUP CONTACTS



Group/Club/Association	Contact	
Adult Horse Riders Social Group	Marie Hammond	0447 121 014
Anglican Parish of Beverley-Brookton	Priest: Philip Raymont	0419 177 178
Beverley & Districts Motorcycle Club	Anthony Fiaschi	0419 993 232
	Greg Offer	0428 120 003
Beverley Agricultural Society	President: Mick Martin	0408 950 043
	Secretary: Sue Martin	0427 771 054
Beverley Amateur Dramatics (BAD Drama Club)	Committee Contact: Britt Hadlow	0447 811 267
Beverley Amateur Swimming Club	President: Amanda Farr	0407 389 642
	Secretary: Rebecca Burglass	0422 433 434
Beverley Badminton Club	Captain: Cara Hammond	0400 762 889
Beverley Bowling & Croquet Club	President: Jeff Murray	
	Ladies Capitan: Lyn MacTaggart	0439 461 634
	Mens Capitan: Daniel Fleay	0458 088 674
Beverley Community Garden	Betty Lobb	0400 569 971
	Dorothy Sampson	0429 989 031
Beverley CWA	President: Pat Hambly	9646 1481
	Secretary: Sam Mearns	0447 160 076
Beverley DHS P&C	President: Bruce Kilpatrick	0428 464 006
Beverley Football & Netball Club	President: Robbie Wansborough	0428 843 251
	Secretary: Blake O'Meagher	0499 166 160
	Committee Contact: Jayde Creedon	
	League Coach: Kodie Fleay	0418 929 141
	Reserves Coach: James Adams	0429 461 000
Beverley Garden & Tree Society	President: Lyn Murphy	0418 282 674
	Secretary: Dorothy Sampson	0429 989 031
Beverley Golf Club	President: Darryl Hagan	
	Mens Capitan: Marc Edwards	
	Ladies Capitan: Jane Murray	
Beverley Historical Society	President: Joy Smith	0427 411 881
	Secretary: Morag Whitney	9646 1075
Beverley Horse & Pony Club	President: Lisa Maxwell	0408 902 701
	Secretary: Tess Hawke	0419 879 310
Beverley Hospital Auxiliary Inc./OP Shop	President: Glenys Lane	0437 807 454
	Secretary: Gina Adams	0427 461 368
Beverley Junior Sports	President: Mark Bickley	0459 655 027
	Secretary: Jo Copping	0438 972 335
	Football Coordinator: Brett Shaw	0427 481 028
	Netball Coordinator: Sharlee Higgins	0426 881 080
	Cricket Coordinator: Brad Copping	0400 383 664
	Hockey Coordinator: Kelly Mann	0428 779 234
Beverley Lawn Tennis Club	President: Chantelle Meade	0429 418 576
	Secretary: Rebecca Smith	0428 805 681
<b>Beverley Men's Shed</b>	President: Harvey Morrell	0427 235 681
	Secretary: David Winkle	0429 873 474
Beverley Naturalists Club	Phyllis Facey	9646 1469



Beverley Netball Club	President: Nat Ashworth	
	Secretary: Laura O'Meagher	0417 973 731
Beverley Off Road Motor Sports Assoc	Cheryl Simson	0409 205 551
Beverley Patchwork & Quilters	Jan Sherwood	0438 019 510
Beverley Playgroup	President: Kelly Aaron	0400 772 081
	Secretary: Melissa Blechynden	0429 504 963
Beverley Redbacks Hockey Club	Secretary: Britt Hadlow	0447 811 267
Beverley Soaring Society Gliding Club	President: Geoff Overheu	0407 575 216
	Secretary: Piero Velletri	0417 045 437
Beverley Station Arts	President: Jenny Broun	0419 040 063
	Secretary: Sarah Miller	0427 464 078
Beverley Toy Library	President: Kelly Mann	0428 779 234
	Secretary: Skye Carlhausen	0438 353 634
Clay Target Club	Secretary: H Henderson	0407 457 427
Cricket Club	President: Stephen Gollan	9646 1200
	Coach: James Adams	0429 461 000
Cropping Committee	Secretary: Stephen Gollan	9646 1200
Dale Community Group	President/Treasurer: Yvonne Hobbs	0438 370 755
Dale River Sports Ground Committee	Secretary: Georgina Beecroft	9647 1089
Friends of the Dale River	Linley Thompson	0429 953 800
	Lisa Blanch	9646 1716
Novus Agri	President: Kelly Mann	0428 779 234
	Secretary: Skye Carlhausen	0438 353 634
Rifle Club		9641 6061
Royal Antediluvian Order of Buffaloes		0419 945 240
Southern Avon Ladies Darts	Monica Camenzuli	0474 105 242
St John Ambulance	Chairperson: Robyn Murray	
	Sub Centre	9646 0646
Top of the Avon Line Dancers	Jan Turrell	0429 952 177

## FUN FACTS



1. The Eiffel Tower can be 15 cm taller during the summer, due to thermal expansion meaning the iron heats up, the particles gain kinetic energy and take up more space.
2. Australia is wider than the moon. The moon sits at 3400km in diameter, while Australia's diameter from east to west is almost 4000km.
3. The Ancient Romans used to drop a piece of toast into their wine for good health - hence why we 'raise a toast'.
4. It's illegal to own just one guinea pig in Switzerland. It's considered animal abuse because they're social beings and get lonely.
5. The unicorn is the national animal of Scotland. It was apparently chosen because of its connection with dominance and chivalry as well as purity and innocence in Celtic mythology.



# BEVERLEY FOOTBALL & NETBALL CLUB

**FOOTBALL PRESEASON**  
EVERY TUESDAY & THURSDAY  
BEVERLEY TOWN OVAL  
FROM 6:30PM

**NETBALL PRESEASON TBC**

KEEP AN EYE ON OUR SOCIAL MEDIA PAGES FOR UPDATES

FOR MORE INFORMATION PLEASE CONTACT OUR COACHES ON THE BELOW DETAILS

KODIE FLEAY  
League Coach  
0418 929 141

JAMES ADAMS  
Reserves Coach  
0429 461 000

**All new, past &  
present  
players are  
welcomed**

IF YOU HAVENT PLAYED BEFORE  
OR NEW TO TOWN THIS IS A  
GREAT WAY TO GET INVOLVED IN  
OUR COMMUNITY

## **POSITION VACANT!** CANTEEN COORDINATOR

If you are interested in being apart of our amazing club  
& want more information about the canteen coordinator position &  
what is involved please contact  
Robbie on the below number

Follow us on Instagram & Facebook  
to keep updated on all things Redbacks



BEVERLEY  
FOOTBALL &  
NETBALL CLUB



BEVERLEY  
FOOTBALL &  
NETBALL CLUB

## **LOOKING FOR LAND TO LEASE!**

EACH YEAR OUR CLUB HAS BEEN PUTTING IN & TAKING  
OFF CROP AS OUR MAJOR SOURCE OF INCOME!

WE ARE NOW IN NEED OF SOME LAND TO LEASE  
TO ENSURE WE CAN STILL KEEP DOING THIS SERVICE &  
SUPPORTING OUR CLUB FINANCIALLY!

IF YOU HAVE ANYTHING AVAILABLE PLEASE CONTACT:

ROBBIE WANSBROUGH  
0428 843 251  
BEVERLEY FOOTBALL CLUB PRESIDENT



## EVENTS 2022

EVENT	DATE
Community Markets	05 March
Beverley Station Arts - Perth Symphony Orchestra	02 April
Spring Back to Beverley	24 - 25 September

**The flag was flown at half-mast on the Beverley Town Hall as a mark of respect to:-**

- Dorothy Mary Hobbs
- Arie Volkhoff

### Emergency Medical Information Book

This useful book contains all a person's information and medicals record needed if, or when, an ambulance is called, and they need to be transported to a hospital. The Emergency Medical Information Book Available for a \$2 donation at Beverley Farm Services.

Support your local groups

# BEVERLEY BLARNEY

900 copies each month

Community notices are free of charge

**The deadline for the next**

**Beverley Blarney is 4pm**

**Tuesday 22 March 2022**

Contact our friendly Shire staff today

Shire of Beverley

PO Box 20 Beverley WA 6304

**Phone:** 9646 1200

**Email:** [blarney@beverley.wa.gov.au](mailto:blarney@beverley.wa.gov.au)

**Online editions:** [beverley.wa.gov.au](http://beverley.wa.gov.au)

**DISCLAIMER**

*The information in this publication is of a general nature as a service to the ratepayer. The articles included herein are not intended to provide a complete discussion of each subject. While the information is believed to be correct, no responsibility is accepted for its accuracy. No liability is accepted for any statements of opinion or any error or omission.*

Do you want to advertise in the  
Beverley Blarney?

### Advertising Rates

*As at 1 November 2021*

#### Monthly Advertising

#### Annual Advertising

Full Page	185 x 268mm	\$182	Full Page	185 x 268mm	\$1,820
Half Page	185 x 133mm	\$96	Half Page	185 x 133mm	\$960
Quarter Page	92 x 133mm	\$47	Quarter Page	92 x 133mm	\$470
Eighth Page	60 x 87mm	\$29	Eighth Page	60 x 87mm	\$290
Trade Advert	60 x 45mm	\$8			

*Electronic format is preferable:*

*With a .doc (Word Document), .pdf (Adobe), .png or .jpeg extension*

# MARCH 2022

SUNDAY	MONDAY	TUESDAY	WEDNESDAY	THURSDAY	FRIDAY	SATURDAY
		1 Mens Shed	2 CWA Social Morning Badminton	3 Playgroup @ Moort Wabiny Park	4 Op Shop Recycle Bin	5 Community Markets Op Shop
6 Social Tennis 2pm Mass – 8.00am Sacred Heart Church Clay Target Club	7 LABOUR DAY PUBLIC HOLIDAY	8 Mens Shed Quilting	9 Golf Scroungers Active Farmers Croquet Badminton	10 Storytime & Toy Library	11 Golf Scroungers Croquet Adoration and Mass – 2.30pm Sacred Heart Church	12 SAMBA
13 Social Tennis 2pm Mass – 8.00am Sacred Heart Church	14 Weight Watchers Yarns & Yarns Bridge	15 Mens Shed Quilting	16 Golf Scroungers Active Farmers Croquet Badminton CWA Meeting	17 Playgroup @ Amenities Building Playground	18 Recycle Bin Golf Scroungers Croquet Op Shop	19 SAMBA Op Shop
20 Tennis <b>Championship Doubles</b> Mass – 8.00am Sacred Heart Church	21 Weight Watchers Yarns & Yarns Bridge	22 Mens Shed Quilting BLARNEY DEADLINE COUNCIL MEETING	23 Golf Scroungers Active Farmers Croquet Badminton	24 Playgroup @ Moort Wabiny Park	25 Golf Scroungers Croquet Bingo at CRC Op Shop	26 SAMBA
27 Social Tennis 2pm Mass – 8.00am Sacred Heart Church	28 Weight Watchers Yarns & Yarns Bridge	29 Mens Shed Quilting	30 Golf Scroungers Active Farmers Croquet Badminton	31 Playgroup @ Amenities Building Playground		